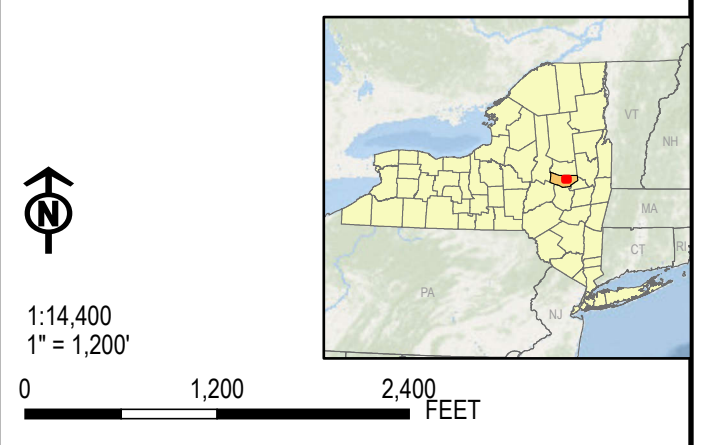


- FACILITY SITE
- SUBSTATION AND SWITCHING STATION
- COLLECTION
- PANEL ARRAY
- LAYDOWN AREA
- FENCE LINE
- ACCESS ROADS
- ELECTRIC TRANSMISSION LINES
- HAMLET ZONING DISTRICT
- TOWN BOUNDARY
- VILLAGE BOUNDARY

BASE MAP: ESRI WORLD IMAGERY BASEMAP
 DATA SOURCES: TRC, ESRI, NYSGIS, REXTAG



| | | |
|---|----------|---|
| PROJECT: CONNECTGEN MILL POINT SOLAR I PROJECT | | PROJ. NO.: 411360 |
| TOWN OF GLEN MONTGOMERY COUNTY, NY | | |
| FACILITY COMPONENTS | | |
| DRAWN BY: A. KAILAS | FIGURE 1 | |
| CHECKED BY: T. KONDAK | | |
| APPROVED BY: T. KONDAK | | |
| DATE: MAY 2023 | | |
| TRC | | 3 CORPORATE DRIVE SUITE 202 CLIFTON PARK, NY 12045 PHONE: 518.348.1190 |
| FILE: Mill Point posters | | |

Copyright © 2023 TRC. All rights reserved. This document is the property of TRC and is not to be distributed, copied, or reproduced in any form without the written permission of TRC.