

**Montgomery County
Consultation
April 2021**

ConnectGEN

Mill Point Solar Project

Local Agency Pre-Application Consultation



*Connecting Power,
Projects, and People*

April 8, 2021

www.connectgenllc.com

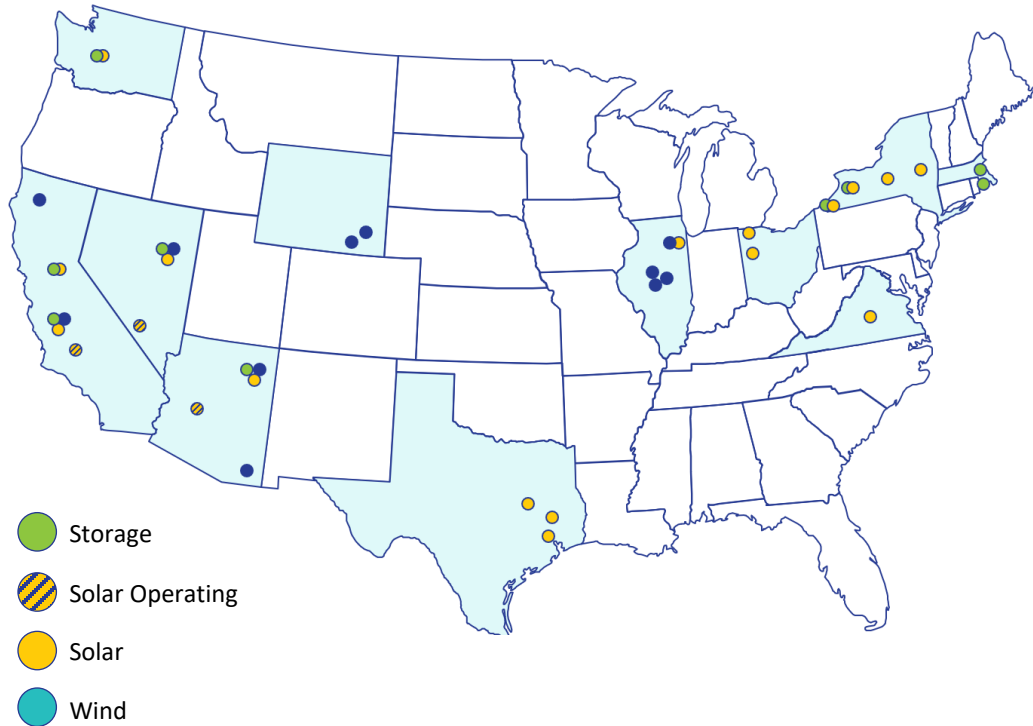
About ConnectGen



ConnectGen is an independent renewable energy company developing large-scale wind, solar, and energy storage projects across North America.

ConnectGen has established a portfolio of over **8,500 MW** of wind, solar, and energy storage projects.

Our experienced team holds deep familiarity with transmission system analysis and market design/regulatory issues.



ConnectGen is backed by Quantum Energy Partners. Founded in 1998, Quantum Energy Partners is a leading provider of private equity capital to the global energy industry, having managed together with its affiliates more than \$17 billion in equity commitments since inception.

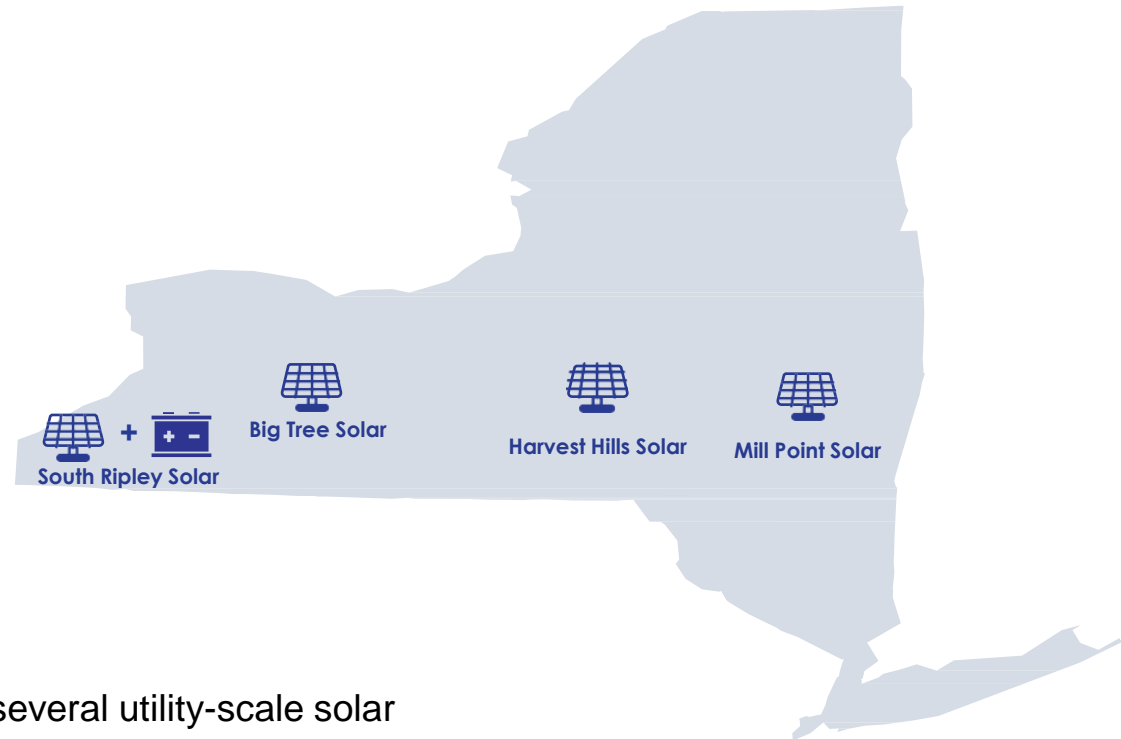


ConnectGen New York Experience

The ConnectGen team has a proven track record of successful project development in New York

NEW YORK EXPERIENCE

- The ConnectGen team has previously managed the development of four utility-scale wind farms across New York, three of which are currently in operation
- Bluestone Wind Farm (paired with energy storage) received a 2017 NYSERDA REC contract



CURRENT PORTFOLIO

- ConnectGen is currently developing several utility-scale solar facilities across the State of New York
- The South Ripley Solar Project (paired with energy storage) received a 2019 NYSERDA REC contract
- The Mill Point Solar Project and Harvest Hills (fka Milliken) Solar Project were selected in the 2020 NYSERDA RFP and REC contracts are pending

Overview of Proposed Solar Facility



Mill Point
SOLAR PROJECT

Project Owner:

ConnectGen Montgomery County LLC

Host Community:

Town of Glen

Renewable Resource:

Solar energy

Projected Capacity:

Up to 250 MWac

Projected Project Footprint:

Up to approximately 2,000 acres

Projected Completion Date:

End of 2023

Point of Interconnection:

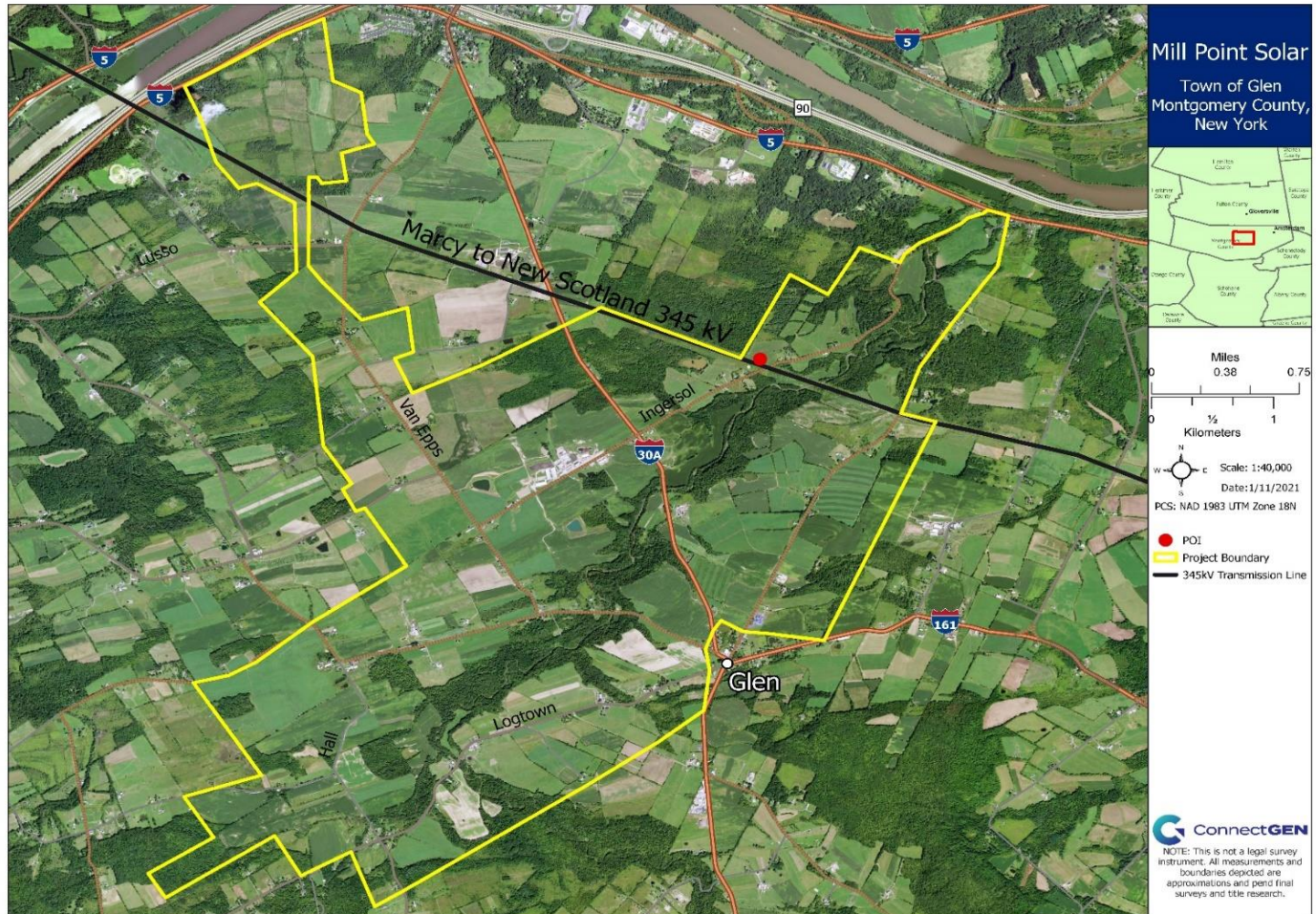
**National Grid Marcy – New Scotland
345kV Transmission Line**

New York Homes Powered:

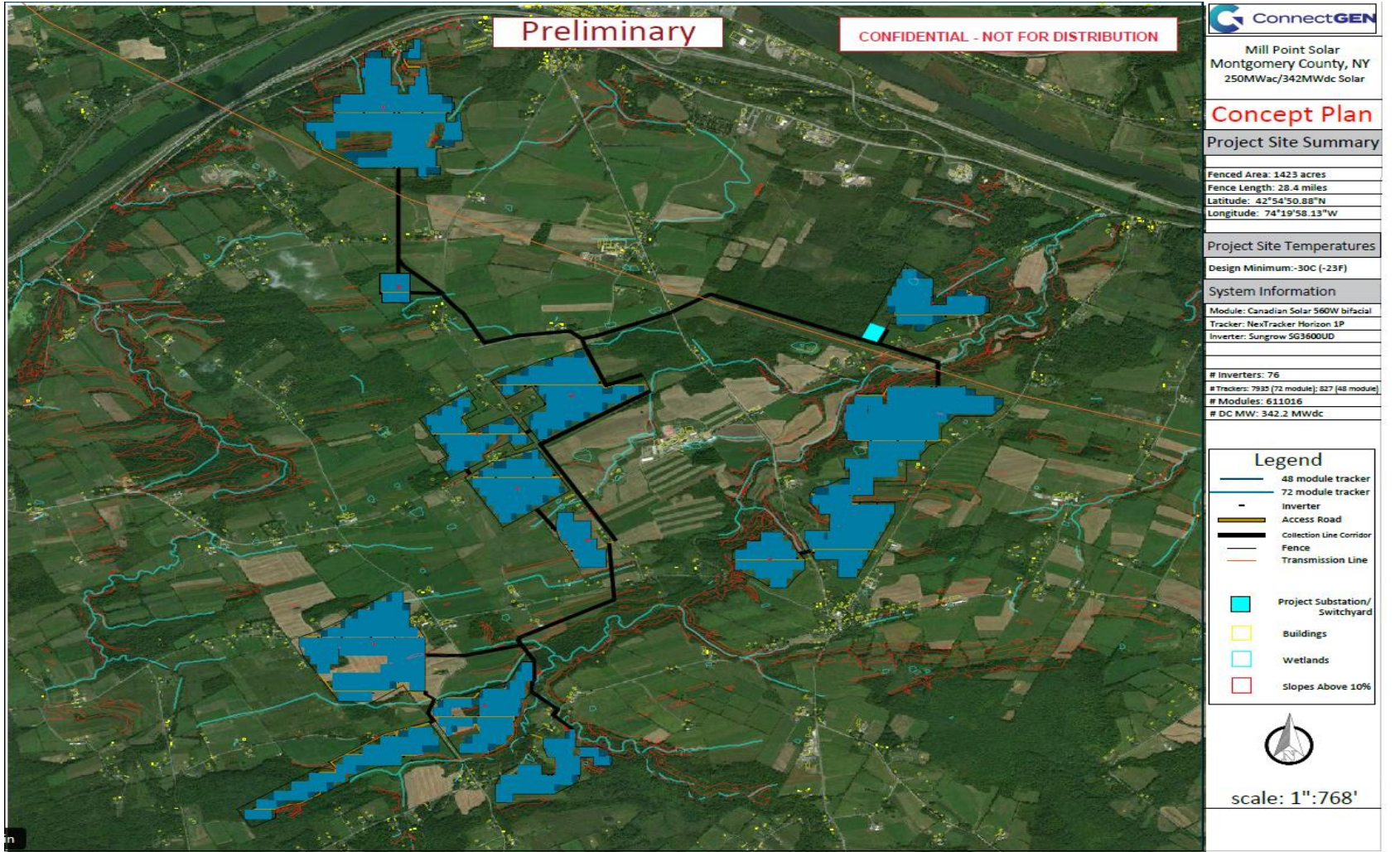
Over 65,000

Project Area and Environmental Setting

- Wholly located within Town of Glen, Montgomery County
- Approx. 4,000-acre target area mostly comprised of cultivated crops and hay/pasture with limited residential and commercial development
- Approx. 1,400-1,500 acres expected to host solar facilities within the Project Fence
- Interconnecting via a new three-breaker ring bus station immediately adjacent to National Grid's Marcy to New Scotland 345KV



Proposed Facility Components (Preliminary Layout)



Project Benefits

DIRECT BENEFITS



Over **\$60 million dollars in payments to local landowners** in the form of solar leases, easement agreements, and good neighbor agreements through the life of the Project.



Over **\$30 million in increased property tax revenue** over the life of the Project benefitting the Town of Glen, the Fonda-Fultonville Central School District, and Montgomery County.



\$1.25 million in residential utility bill credits over the first ten years of the life of the Project



Up to **150 local jobs** anticipated during the peak of construction.

INDIRECT BENEFITS



Revenue to local shops, hotels, restaurants, service and construction material suppliers during construction and operation.



Partnerships with local community groups, local sponsorships, and donations.

Regulatory Overview: “Section 94-c” Siting Process

- In 2020, New York State introduced a new permitting process for large scale renewable energy projects, the “Section 94-c” process.
- Review and decision will be made by the Office of Renewable Energy Siting (ORES) within the Department of State – draft Regulations and Uniform Standards and Conditions (USC) were issued by ORES on September 16, 2020, with a public comment period through December 6, 2020
- Final Regulations and USC became effective March 3, 2021
- Requires pre-application consultations with state agencies, host municipalities, and meetings with community members.
- Uniform Standards and Conditions (“USCs”) outline design requirements for large scale projects to standardize design expectations regarding setbacks and potentially sensitive resources. Site specific requirements will also augment the USCs.
- Projects must be designed to avoid or minimize, to the maximum extent practicable, potentially significant adverse environmental impacts.

New “Section 94-c” Siting Process (continued)

- ORES must make finding that the project, along with uniform and site-specific conditions, would comply with applicable laws and regulations.
- Only projects with “substantive and significant” issues require evidentiary hearings and briefing.
- ORES can elect not to apply a local law that is unreasonably burdensome in view of CLCPA targets and environmental benefits of the project.
- Requires municipalities to submit a statement of compliance with local laws at least 60 days after issuance of the draft permit.
- Local community intervenors and host towns are able to seek local agency account funds (\$1,000/MW).
- 75% of funds reserved for municipalities.
- Must apply for funds within 30 days of application filing.
- Requires a host community benefit



**Office of
Renewable
Energy Siting**

Local Solar Law

Compliance with Local Law:

- Glen adopted a local solar law in November of 2020 that provides guidelines and standards for the development and construction of Utility-Scale Solar Collector System as a Special Permitted Use.
- The design, construction, operation, and decommissioning of the Project will fully comply with the applicable provisions of the local solar law for the Town of Glen
- The Project does not expect to request a finding from ORES that compliance with any provision of the recently adopted local solar law would be unreasonably burdensome

Applicable Local Solar Law Standards for Utility-Scale Solar Collector Systems:

- Section A – Bulk and Area Requirements, including
 - Maximum Height of Collector System and Buildings
 - Setbacks from non-participating parcel lines
 - Lot Coverage requirements
- Section B – General Provisions related to design, construction, operation and decommissioning:
 - Signage, Lighting, Security Fencing, Access Roads and Utilities proposed in Project Area
 - Proof of Utility connection, Facility ownership
 - Glare and Heat, Noise, and Inspection
 - Visual Impacts – visual impact assessment, landscaping, screening, earth berming
 - Decommissioning – standards for removal & restoration, cost estimate and financial security

Local Agency Account Funds

What are Local Agency Account Funds?

Local Agency Account Funding is money that Applicants such as ConnectGen make available to qualified, locally affected parties and municipalities to offset certain expenses they incur in participating in the state permitting process. These funds were created to encourage early and effective public involvement in project development and permitting.

94-c Application Local Agency Account Fund

- Upon the filing of a 94-c Application, ConnectGen will post a local agency account fund (\$1,000/MW) which can be sought by local community members and host towns. 75% of funds are reserved for municipalities.
- Must apply for funds within 30 days of Application filing
- Anticipated Application Filing – September 1, 2021

Applications for Local Agency Account Funds to:

19 NYCRR 900-5

New York State Office of Renewable Energy Siting

Attention: Request for Local Agency Account Funding

Empire State Plaza

Swan Street Building – Core 1

Room #110-119

Albany, NY 12239



<https://www.pexels.com/photo/silver-and-gold-coins-128867/>

Designated Project Contacts

For more information about the Project and for updates, please visit the Project Website or contact the Project team:

Project Website	www.millpointsolar.com
Project Toll-free Hotline	(866) 203-1118
Project Email	info@millpointsolar.com
Development Manager	Eddie Barry Email: ebarry@connectgenllc.com
Development Analyst	Jeremy Akin Email: jakin@connectgenllc.com



Connect**GEN**

www.connectgenllc.com

**Montgomery County
Consultation
May 2023**

MILL POINT SOLAR I

94-c MUNICIPAL CONSULTATION AGENDA

Montgomery County

May 19, 2023

1. General Update
 - a. Brief description of the proposed facility and its environmental setting
 - b. Review map of the proposed facility showing project components and regulatory boundaries

2. Review of Substantive Local Laws
 - a. Review of design and compliance with local laws
 - b. Review of local laws Mill Point may request a waiver of

3. Review of impacts of concern to municipalities (e.g., land use, public health, visual impacts, cultural resources, transportation, and socioeconomics)

4. Next Steps
 - a. Anticipated application date and information regarding the future availability of local agency account funds (see attached overview)
 - i. Any local agency or potential community intervenor shall submit a request for initial funding within thirty (30) days of the date of application filing

Facility Website: <https://www.millpointsolar.com/>

Facility Contact: 1001 McKinney St., Suite 700, Houston, TX 77002, (866) 203-1118
info@millpointsolar.com

MILL POINT SOLAR I

94-C LOCAL AGENCY ACCOUNT PROCESS OVERVIEW

- 94-c requires that applicants submit with their application an amount equal to one thousand (1,000) dollars for each one thousand (1,000) kilowatts of capacity, to be deposited into a local agency account to be made available to local agencies and potential community intervenors for the purpose of contributing to a complete record leading to an informed permit decision as to the appropriateness of the site and the facility, and for local agencies, shall include the use of funds to determine whether a proposed facility is designed to be sited, constructed and operated in compliance with applicable local laws and regulations. This includes the to defray expenses for experts.
- 75 percent of local agency account funds shall be reserved for local agencies
- Any local agency or potential community intervenor shall submit a request for initial funding **within thirty (30) days of the date of application filing**
 - Parties requesting such funding must use the ORES Request For Local Agency Account Funding form available in the Resources section of the ORES website (www.ores.ny.gov/resources).
 - All parties requesting funding must register as a party on the Department of Public Service's Document Matter and Management (DMM) system, consent to electronic service, and file the funding request form electronically (EFile).
 - Information on how to register on DMM may be found at: www.ores.ny.gov/resources.
 - Instructions on how to EFile may also be found at: www.ores.ny.gov/resources.
 - In addition to Efiling, all requests for local agency account funding must also be submitted by email to ORES (general@ores.ny.gov).
 - Persons without internet or e-mail access may mail their documents to the Office of Renewable Energy Siting (ORES), c/o: OGS Mailroom, Empire State Plaza, 240 State Street, P-1 South, J Dock, Albany, NY 12242, Attn: 21-00917 LAA Funding Request.

- Each request for funds from the local agency account shall be completed on an ORES-approved form and contain:
 - A statement that the facility falls within the local agency's jurisdiction or that a permit or approval from the local agency would have been required in the absence of Section 94-c of the Executive Law;
 - For individual potential community intervenors, a statement of the number of persons and the nature of the interests the requesting person represents, and proof of residency (e.g., a New York State driver's license, permit or non-driver identification card, a recent bank statement, a recent pay stub or a recent utility bill);
 - for any non-profit organization potential community intervenors, a statement of a concrete and localized interest that may be affected by a proposed facility and that such interest has a significant nexus to its mission;
 - A statement of the availability of funds from the resources of the local agency or potential community intervenor and of the efforts that have been made to obtain such funds;
 - The amount of funds being sought;
 - To the extent possible, the name and qualifications of each expert to be employed, or at a minimum, a statement of the necessary professional qualifications;
 - If known, the name of any other local agency, potential community intervenor or entity who may, or is intending to, employ such expert;
 - A detailed statement of the services to be provided by expert witnesses, consultants, attorneys, or others (and the basis for the fees requested), including hourly fee, wage rate, and expenses, specifying how such services and expenses will contribute to the compilation of a complete record as to the appropriateness of the site and facility;
 - If a study is to be performed, a description of the purpose, methodology and timing of the study, including a statement of the rationale supporting the methodology and timing proposed, including a detailed justification for any proposed methodology that is new or original explaining why pre-existing methodologies are insufficient or inappropriate;
 - A copy of any contract or agreement or proposed contract or agreement with each expert witness, consultant or other person; and
 - A completed authorization form for electronic Automated Clearing House payment, or payment instructions for payments by check.



Local Consultation Meeting Notes

Date/Time May 19, 2023, 12:30 PM EST

Meeting Title Local Consultation Meeting for the Mill Point Solar I Project

Format: Web Meeting

Attendance: Montgomery County
Matthew Ossenfort, County Executive
Meghan M. Manion, County Attorney

ConnectGen
Andrew Barrett, Development Manager
John Kuba, Environmental Senior Director
Colleen Nash, Development Director
Jeffrey Nemeth, Development Director

TRC
Tegan Kondak, Account Director, Environmental and Permitting

Young/Sommer
James Muscato, Partner
Jessica Klami, Partner

Minutes Prepared By: TRC, ConnectGen, and Young/Sommer

Attachments

Attachment 1. Local Consultation Meeting Presentation

Attachment 2. Meeting Follow Up Response

Meeting Purpose

Andrew Barrett (ConnectGen, LLC) and James Muscato (Young/Sommer LLC) led a pre-Application meeting with Montgomery County per §900-1.3 Pre-application procedures (a) Consultation with Local Agencies of the 94-c Regulations. ConnectGen, Young Sommer, TRC, were present to answer any questions the County Executive and legal counsel requested. ConnectGen provided a short presentation introducing ConnectGen, their New York State experience as well as the overview and timeline for the Mill Point Solar I Project (see Attachment 1). The intent of the meeting was to provide the County with an introduction to the Project and ongoing work on the Project application.

Presentation Overview

ConnectGen provided an overview of the Project as well as the 94-c process and schedule. The County was particularly interested in ConnectGen's plans and commitment for landscaping, and ConnectGen was able to provide details on the proposed width and type of landscaping, as well as the 94-c requirements for a landscaping plan and maintenance. According to the County, other solar projects in the County have not had landscaping efforts/maintenance that meet the County's expectations.

The County also questioned visual impact to residents and to the County Scenic By-Ways. The County provided, after the call, a resolution showing that many county roads were considered to be scenic. ConnectGen stated they would take this into account for the Application.

ConnectGen explained they were looking for feedback on the visual aesthetic resources in the County, as well as an understanding of any County laws that would need to be taken into account for the Application.

The County was interested in seeing visual simulations for the Project and understanding the final Project layout. ConnectGen stated this information would be contained in the application and available for County review.

Mill Point Solar II

ConnectGen highlighted that this the Mill Point Solar II Project, if it were to move forward would be a separate project and separate 94-c process.

Community Engagement to Date

ConnectGen and Young/Sommer highlighted the community engagement that the Project team has conducted to date on the Project. ConnectGen highlighted that they have gone above and beyond what the 94-c regulations require, as they want to be good partners with the Town of Glen and Montgomery County.

Design Considerations

ConnectGen went over the map of Project design considerations and highlighted Project areas and aspects where the Town Law was taken into account in the design. For example, ConnectGen committed to: avoiding panels adjacent to the Glen Village Cemetery in the Town of Glen; avoiding panels in the Hamlet of Glen; burying all collection lines; avoiding placing panels on slopes greater than 15% to the extent practicable; avoiding, minimizing and mitigating wetland impacts to federal and state regulated features; and minimizing tree clearing.

Follow-up Questions and E-mail

The County had several questions for ConnectGen that required a follow-up e-mail and attachments, including:

- 1) Please provide slides / easel boards from community meetings in Glen on May 8-9.
- 2) Please provide copy of your letter sent to the Town of Glen, ahead of Town Consultation.
- 3) How old are trees typically, when planted for initial landscaping?
- 4) Can you provide more detail on MW by parcel breakout in the project facility map?
- 5) How does ConnectGen initially measure the solar resource in the project area at the project site, optimize the project design and size, and then estimate the annual output?

Answers and attachments to these questions were provided in an e-mail to the County on 6/15/23. (See Attachment 2)

**Attachment 1.
Local Consultation Meeting
Presentation**



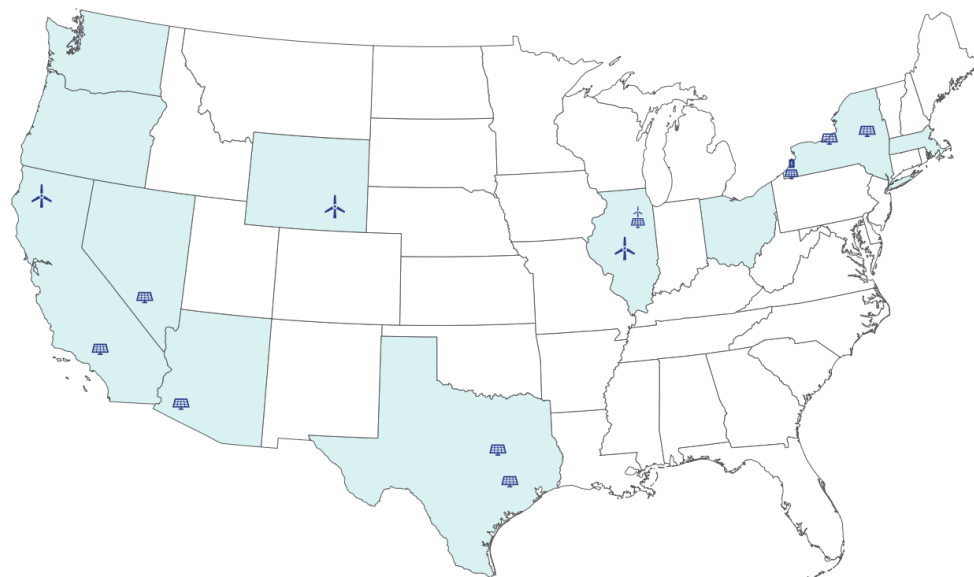
Mill Point Solar I

Local Consultation Meeting

May 19, 2023

Virtual Meeting with Montgomery County

About ConnectGen



 Solar projects  Wind projects  Storage Projects  States with projects under development

ConnectGen is an independent renewable energy company developing large-scale wind, solar, and energy storage projects across North America.

ConnectGen has 139 net MW in operations and a portfolio of over **16,000 MW** of wind, solar, and energy storage projects in development.

Our experienced team holds deep familiarity with transmission system analysis and market design/regulatory issues.

ConnectGen is backed by Quantum Energy Partners. Founded in 1998, Quantum Energy Partners is a leading global provider of equity, credit, structured capital, and venture capital to the responsibly sourced energy and energy transition and decarbonization sectors, having managed together with its affiliates more than \$21 billion since inception.



ConnectGen - New York

Experience

HISTORY IN NEW YORK

The ConnectGen team has previously managed the development of ten utility-scale wind farms across New York, six of which are currently in operations.

CURRENT PROJECT PORTFOLIO

ConnectGen is currently developing several utility-scale solar facilities across the State of New York. The South Ripley Solar Project (paired with energy storage) received a 2019 NYSERDA REC contract, and Harvest Hills Solar and Mill Point Solar I projects were awarded REC contracts in NYSERDA's 2020 solicitation.

On April 21, 2023, the South Ripley Solar Project received its 94-c Permit from ORES, proving ConnectGen's ability to carefully and successfully permit a large-scale solar project in New York State.



We are committed to working with landowners, neighbors, and all project stakeholders to safely and responsibly design and build projects that bring long-term benefits to the communities.

Description of Proposed Facility



PROJECT OWNER:

ConnectGen Montgomery County LLC

HOST COMMUNITY:

Town of Glen

RENEWABLE RESOURCE:

Solar Energy

PROJECTED CAPACITY:

Up to 250 MWac

PROJECTED FACILITY SITE:

Approximately 3,070 acres

PROJECTED FENCED PANEL AREA:

Approximately 1,041 acres

PROJECTED COMPLETION DATE:

2026

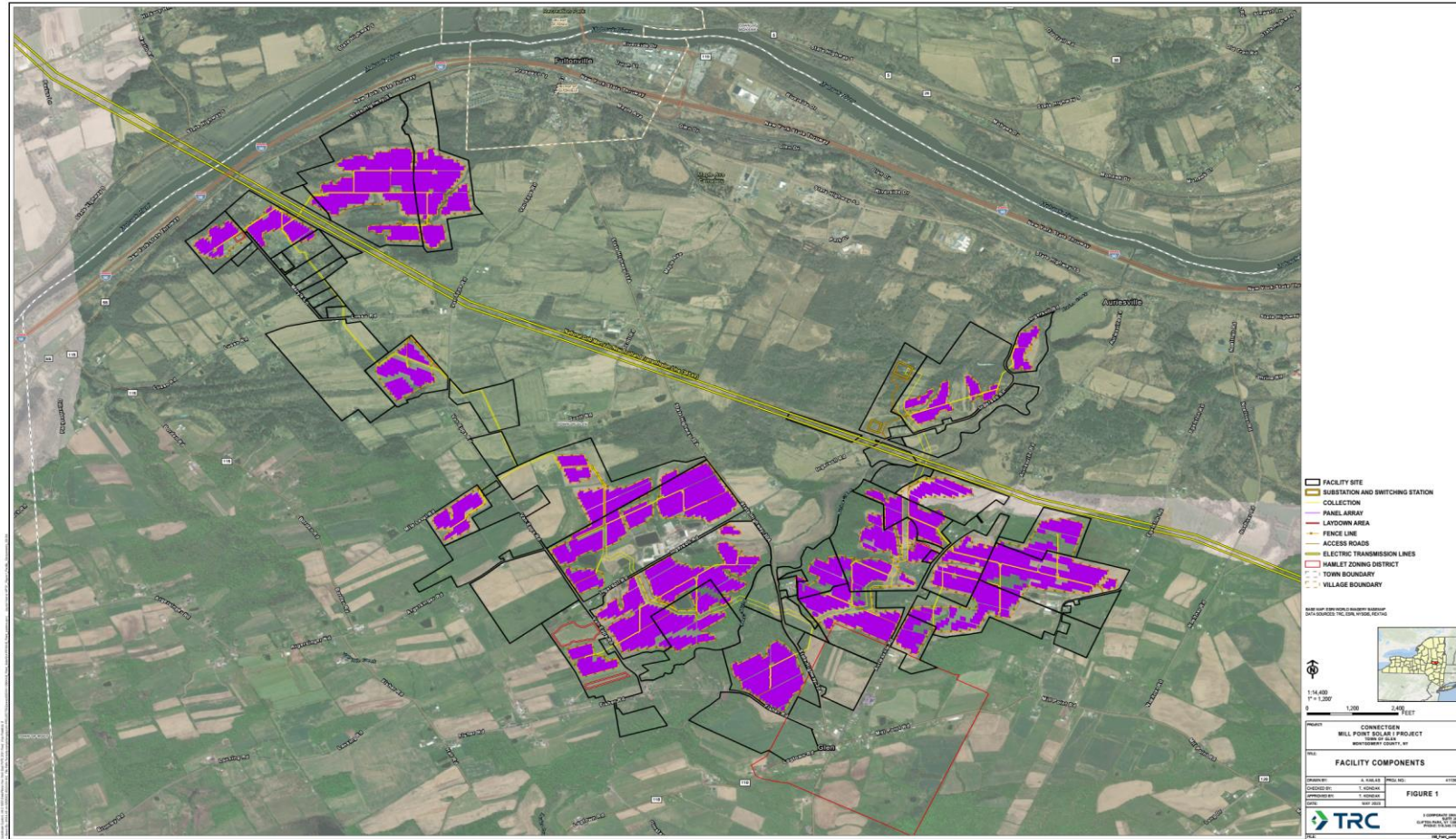
POINT OF INTERCONNECTION:

National Grid Marcy – New Scotland 345kV
Transmission Line

NEW YORK HOMES COVERED:

Over 65,000 annually

Map of Proposed Mill Point Solar I Facility



Timeline for Mill Point Solar I



LAND ACQUISITION AND COMMUNITY ENGAGEMENT

- Execute lease agreements and other land agreements
- Engage elected town officials and local stakeholders in an effort to inform the broader community
- Hold Community Meetings over the course of development

ENVIRONMENTAL STUDIES AND PRELIMINARY DESIGN

- Complete desktop and field studies to identify environmental constraints in the Project Area
- Conceptual design will avoid and minimize impacts to environmental resources and the community

ELECTRIC GRID INTERCONNECTION STUDIES

- Undergo technical studies completed by the local utility and NY grid operator to secure the right to connect to the electrical grid

REGULATORY REVIEW & PERMITTING

- Pre-application consultations with local stakeholders as well as local, state, and federal agencies as part of the Section 94-c permitting process
- Secure any and all federal and state permits necessary for construction and operation of the Project

FINAL ENGINEERING & DESIGN

- Complete final engineering and design in preparation for construction and pre-construction compliance filings

Mill Point Solar II

- ConnectGen is pursuing one 94-c application for a 250 MW project referred to as Mill Point Solar I at this time. ConnectGen is separately working on Mill Point Solar II. The Projects are being developed separately because of delays with the transmission grid study. We will be filing two separate 94-c applications to ORES, resulting in two separate 94-c regulatory processes.
- NYISO, the New York grid operator, controls the timing of these grid studies, and there has been a general delay across New York State, due to the increasing number of energy projects in the queue.
- We also want to acknowledge Resolution 22 recently passed by the Glen Town Board. Our plan with the two projects is consistent with Resolution 22.
- We separately will satisfy all 94-c requirements for Mill Point Solar II, including: a separate and comprehensive 94-c application, municipal engagement, and additional public meetings to provide information to and answer questions from Glen residents and other project stakeholders. In addition, we will address potential cumulative impacts associated with the two projects.
- We will continue to work with stakeholders to ensure Mill Point Solar I and Mill Point Solar II incorporate local feedback.

Community Engagement To Date

ConnectGen has held multiple community meetings to date:

- ConnectGen met with County Executive on April 8, 2021
- Virtual Information Meeting held April 14, 2021
- In-Person Community Meeting held August 11, 2021
- In-Person Community Meeting held November 17, 2021
- In-Person Community Meetings held on May 9th and 10th 2023
- Representatives from ConnectGen attended multiple Town Planning Board meetings in 2021 and 2022 and provided updates on the project to Board members
- ConnectGen provided comments to the Town of Glen on the 2022 Solar Law
- Representatives from ConnectGen attended multiple Town Board meetings in 2022 and 2023 and provided updates on the project to Board members and the public on June 13, 2022, July 11, 2022, September 12, 2022, and April 10, 2023

State requirements and local zoning regulations

ConnectGen has designed the project to adhere to the ORES regulations and Uniform Standards and Conditions which govern solar development and operation.

Additionally, Mill Point Solar I has been designed to comply with the substantive provisions of the Town of Glen's applicable local laws to the maximum extent practicable. ConnectGen met with the Town of Glen on May 9, 2023, to review Mill Point Solar I's compliance with local laws.

ConnectGen has also identified the following County requirements which may be applicable to the Facility:

- Montgomery County Department of Public Works, Policy & Standards for Entrance/Exits
 - Driveway Permit Application
- Special Haul Permit for vehicles, the dimensions and weights of which exceed those specified in Article 10, Section 385 Vehicle and Traffic Law
- ConnectGen will work to enter into a mutually agreeable Road Use Agreement with Montgomery County if needed.

State requirements and local zoning regulations

Mill Point Solar I has been designed to comply with the Town of Glen's solar law (**Solar Energy Facilities Law of the Town of Glen (Local Law No. 3 of 2022)**) to the maximum extent practicable.

- A letter outlining Mill Point Solar I's compliance with applicable local substantive laws was sent on April 25, 2023, to the Town.

Nevertheless, ConnectGen will be requesting waivers from certain Town requirements as highlighted below and detailed in the letter to the Town regarding local law compliance.

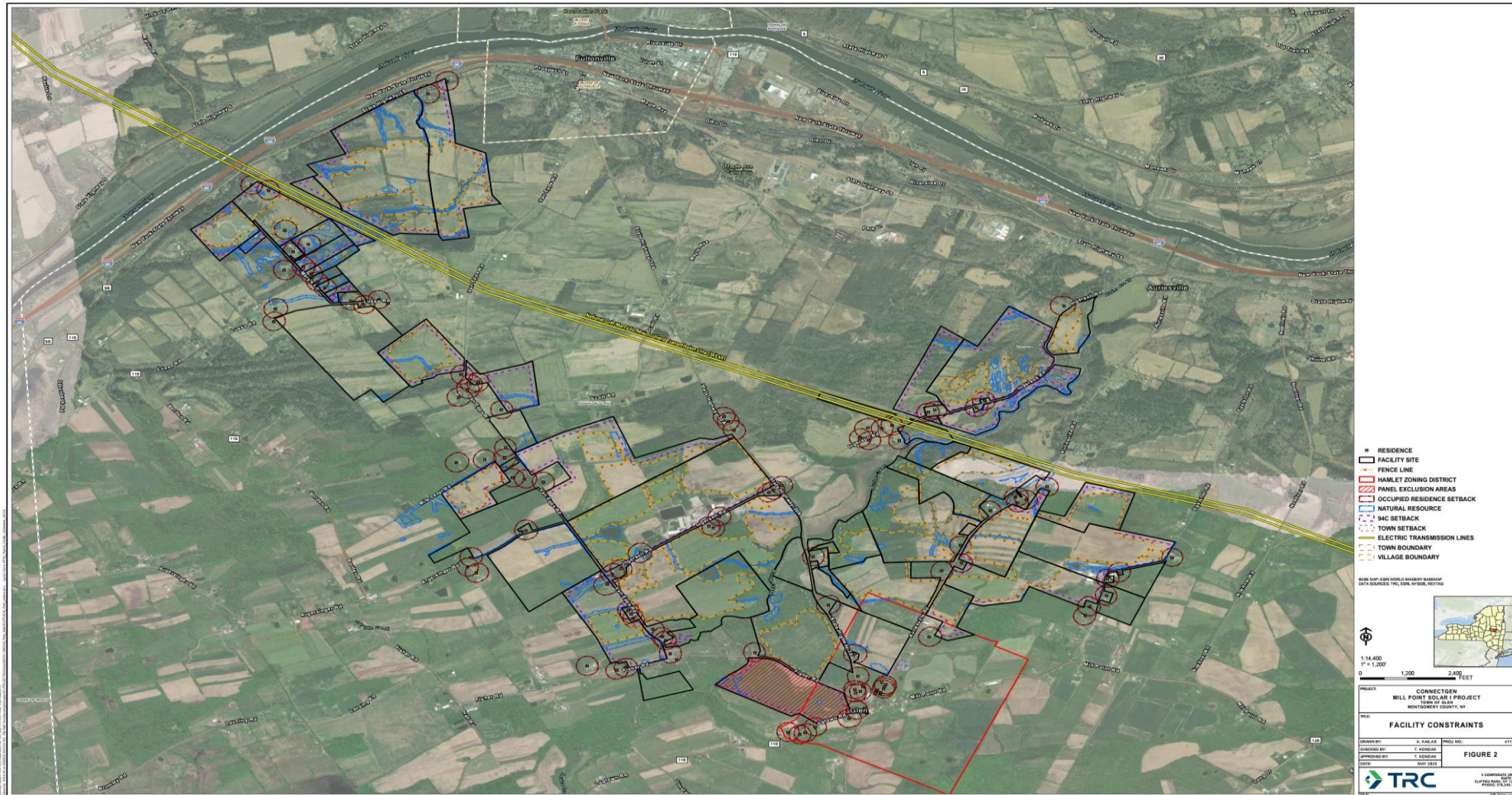
- 100-foot setback from wetlands, ponds, and streams (Section 5 (2)(b)(iii))
- 500-foot setback from front, side and rear yards (Section 5 (2)(b)(iv))
- 20% Maximum Lot Coverage requirement (Section 5 (2)(c)(a))
- Active farmland lot restrictions (Section 5 (4))
- Slopes greater than 15% (access roads and collection) (Section 5 (5)(a))
- 9-acre tree clearing limitation (Section 5 (5)(c))
- Decommissioning removal and security requirements (Section 5 (22)(iii) and Section 5(21)(b))

Consideration of Design Changes

Mill Point Solar I has been designed to comply with local substantive requirements to the maximum extent practicable. The following changes have been made to the Facility design to comply with local requirements to the extent practicable and based upon community feedback:

- ConnectGen has committed to avoid the siting of solar panels on the parcel of land adjacent to the cemetery in the Town of Glen
- ConnectGen has sited panels outside the Hamlet District of Glen
- All collection lines will be buried below ground (a small portion of the generation tie line, less than approximately 1,500 feet, that connects the Facility substation to the switching station will be above ground)
- ConnectGen has avoided placing panels on slopes greater than 15%
- The Facility has been designed to avoid, minimize and mitigate impacts to federal and state regulated wetlands and streams and their one-hundred-foot adjacent areas to the maximum extent practicable
- Tree and vegetation removal will be limited to the minimum necessary for facility construction and operation

Map of Design Considerations



Land Use

94-c Requires “A map of all publicly known proposed land uses within the study area, as determined in consultation with State and local planning officials, from any public involvement process, or from other sources”

- Letter requesting County input on proposed land uses was sent out on March 10, 2023.
- Is the County aware of any new or proposed land use applications in the County?

Public Health, Safety and Security

94-c requires the applicant to prepare a Site Security Plan and Safety Response Plan

- These plans will be sent to Homeland Security and the local police and fire agencies including Montgomery County Fire Service, for review and comment at least 30 days prior to the filing of the Application.
- ConnectGen met with the Town of Glen Fire Department on October 25, 2022 and February 2, 2023 and discussed the current department resources, design details for the Facility and other safety and security needs for the Facility.
- ConnectGen will continue to consult with local emergency service providers regarding Facility safety and security.
- ConnectGen will conduct training drills with local EMS annually, and will coordinate with Montgomery County Fire Service for training needs.

Visual Impact Assessment

94-c requires “In developing the application, the applicant shall confer with municipal planning representatives, the Office, and where appropriate, OPRHP and/or APA in its selection of important or representative viewpoints”

- In September 2021 a letter requesting input on viewpoints was sent to Town of Glen, the County, local historian and State agencies. Numerous viewpoints were identified in response to this request, including from local Planning Board members, Town of Glen Historian, and Montgomery County Historian.
- A second letter was sent in April 2023, again requesting input on viewpoints.

Cultural Resources

- Provided Phase IA Archaeological Survey to ORES and New York State Historic Preservation Office (NYSHPO)
- Received request for a Phase IB Archaeological Field Survey (survey complete, reports ongoing)
- Consultation ongoing with ORES and NYSHPO
- Consultation with Saint Regis Mohawk Tribe
- Visual Impact Assessment will include assessment of historical markers and scenic by-ways
- Removed panels from area adjacent to cemetery and Hamlet District
- Avoiding archeologically sensitive areas in coordination with NYSHPO

Transportation

- ConnectGen will work to enter into a mutually agreeable Road Use Agreement with Montgomery County if needed
- ConnectGen will provide a proposed haul route map to the Montgomery County Department of Public Works at least 30 days prior to Application filing for input
- The 94-c Application will include an analysis of traffic and transportation impacts during construction and operation of the facility. The transportation analysis will include:
 - A review of existing data on vehicle traffic, use levels and accidents;
 - A review of transit facilities and routes, including areas of school bus service;
 - An identification of potential approach and departure routes to and from the facility site for police, fire, ambulance and other emergency vehicles;
 - A review of available load bearing and structural rating information for expected facility traffic routes (existing culverts to be traversed by construction vehicles shall also be considered in the analyses);
 - An estimate of the trip generation characteristic of the facility during construction;
 - An analysis and evaluation of the traffic and transportation impacts of the facility; and
 - An analysis and evaluation of the impacts of the facility on airports and airstrips, railroads, buses and any other mass transit systems in the vicinity of the facility

Socioeconomic Effects

- Paying **more than \$2.5 million per year directly to Glen residents and local landowners** over the life of the project through annual lease payments, easement agreements, and good neighbor agreements, resulting in a consistent stream of revenue that can protect against fluctuating commodity prices and help maintain family farms
- Establishing a Host Community Benefit Program through which **\$500/MW is paid into a fund annually** over the first 10 years of the project's operations (**\$1.25 million in total**), to be distributed equally by the local utility to all residential utility customers in Glen in the form of an **annual utility bill credit**

Decommissioning

The 94-c Application will include a Decommissioning and Site Restoration Plan which will address:

- Commitments for equipment removal (4 feet below grade in agricultural land and 3 feet below grade in non-agricultural land)
- Safety
- Aesthetics
- Recycling
- Potential future uses for the Site
- Funding
- Schedule
- Estimated cost for decommission and allocation of funding to local municipalities which will include a 15% contingency based on overall decommissioning and site restoration estimate

Intervenor Funding

Upon the filing of a 94-c Application, ConnectGen will post an intervenor fund (\$1,000/MW) which can be sought by local community intervenors and local agencies. 75% of funds are reserved for local agencies. Application and instructions for filing can be found on ORES website at www.ores.ny.gov

Must apply for funds within 30 days of Application filing:

[Applications for Intervenor Funds to:](#)

19 NYCRR 900-5

New York State Office of Renewable Energy Siting

Attention: Request for Local Agency Account Funding

99 Washington Avenue

Albany, New York 12231-0001

Attachment 2.
Meeting Follow Up Response

From: [Andrew Barrett](#)
To: mmanion@co.montgomery.ny.us; mossenfort@co.montgomery.ny.us
Cc: [James Muscato](#); [Jessica Klami](#)
Subject: Follow-ups to May 19 consultation with Montgomery County re: Mill Point Solar I project in Glen, NY
Attachments: [image001.png](#)
[230425 Ltr to Town of Glen Solar Law Consultation and Waivers MPSI.pdf](#)

Meghan and Matt,

Copying Jim and Jessica, and sending a belated e-mail with some follow-up answers and attachments to questions you asked during on video/phone consultation with you on May 19. My apologies for the delay.

1. **Please provide slides / easel boards from community meetings in Glen on May 8-9**
 - a. [Link](#)
2. **Please provide copy of your letter sent to the Town of Glen, ahead Town consultation**
 - a. Attached, "April 25 Letter re: Local Law Consultations"
3. **"How old are trees typically, when we plant them for initial landscaping?"**
 - a. Average age of installed trees is 3-6 years old
4. **"Can you provide more detail on MW by parcel breakout in the project facility map?"**
 - a. The average MW hosted on each parcel in the project area ranges from ~5 MW to ~25 MW, depending on the size of the parcel and its suitability to host solar panels.
5. **How do we initially measure the solar resource in the project area at the project site, optimize the project design and size, and then estimate the annual output?**
 - a. ConnectGen's solar facility design process begins by taking twelve (12) months of quality-controlled measurements from an on-site weather station equipped with a suite of sensors that record a wide array of weather data, including solar irradiation. ConnectGen correlates the data to a long-term hourly time-series satellite derived solar resource model. With site data, ConnectGen evaluates design configurations within the project area, iterating on project equipment, arrangement, and size. ConnectGen evaluates design iterations with consideration for environmental impact, applicable local and state siting laws, landowner requests, and the facility's ability to satisfy the energy output obligated by the project's contract with the New York State Energy Research and Development Authority (NYSERDA). ConnectGen determines the facility's energy production using an industry leading solar modeling software, which incorporates measured site data, project equipment, site-specific arrangement of solar arrays, and site topography to determine an annual hourly output of the facility.

I hope this information is helpful.

Thank you,

Andrew

Andrew Barrett
Manager, Development



1001 McKinney St, Suite 700
Houston, TX 77002

Office / Cell: 346-833-0778

Email: abarrett@connectgenllc.com