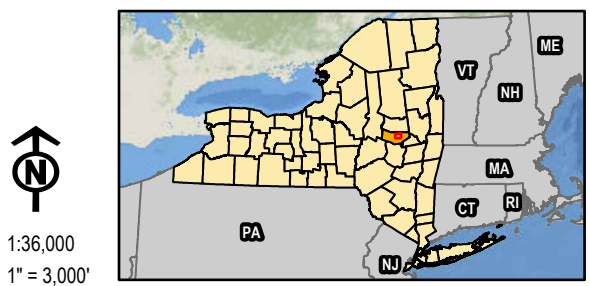


LEGEND

- FACILITY SITE
- VILLAGE BOUNDARY
- TOWN BOUNDARY
- COUNTY BOUNDARY

NOTES:
 1. THIS FIGURE IS DESIGNED TO BE VIEWED OR PRINTED IN COLOR AT 11X17.

BASE MAP: USGS NATIONAL MAP, 2023.
 DATA SOURCES: TRC, NYSGIS, USGS, ESRI.



1:36,000
 1" = 3,000'



PROJECT: MILL POINT SOLAR I PROJECT CONNECTGEN MONTGOMERY COUNTY LLC TOWN OF GLEN, MONTGOMERY COUNTY, NEW YORK	
TITLE: FACILITY SITE LOCATION	
DRAWN BY: A. KAILAS	PROJ. NO.: 411360.1000.0000
CHECKED BY: C. PEARCE	FIGURE 2-1
APPROVED BY: T. KONDAK	
DATE: JANUARY 2024	



3 CORPORATE DRIVE
 SUITE 202
 CLIFTON PARK, NY 12065
 PHONE: 518.348.1190