

**LEGEND**

- 1000-FT BUFFER OF FACILITY BOUNDARY
- FACILITY SITE
- TOWN BOUNDARY
- VILLAGE BOUNDARY

**PROPERTY CLASS**

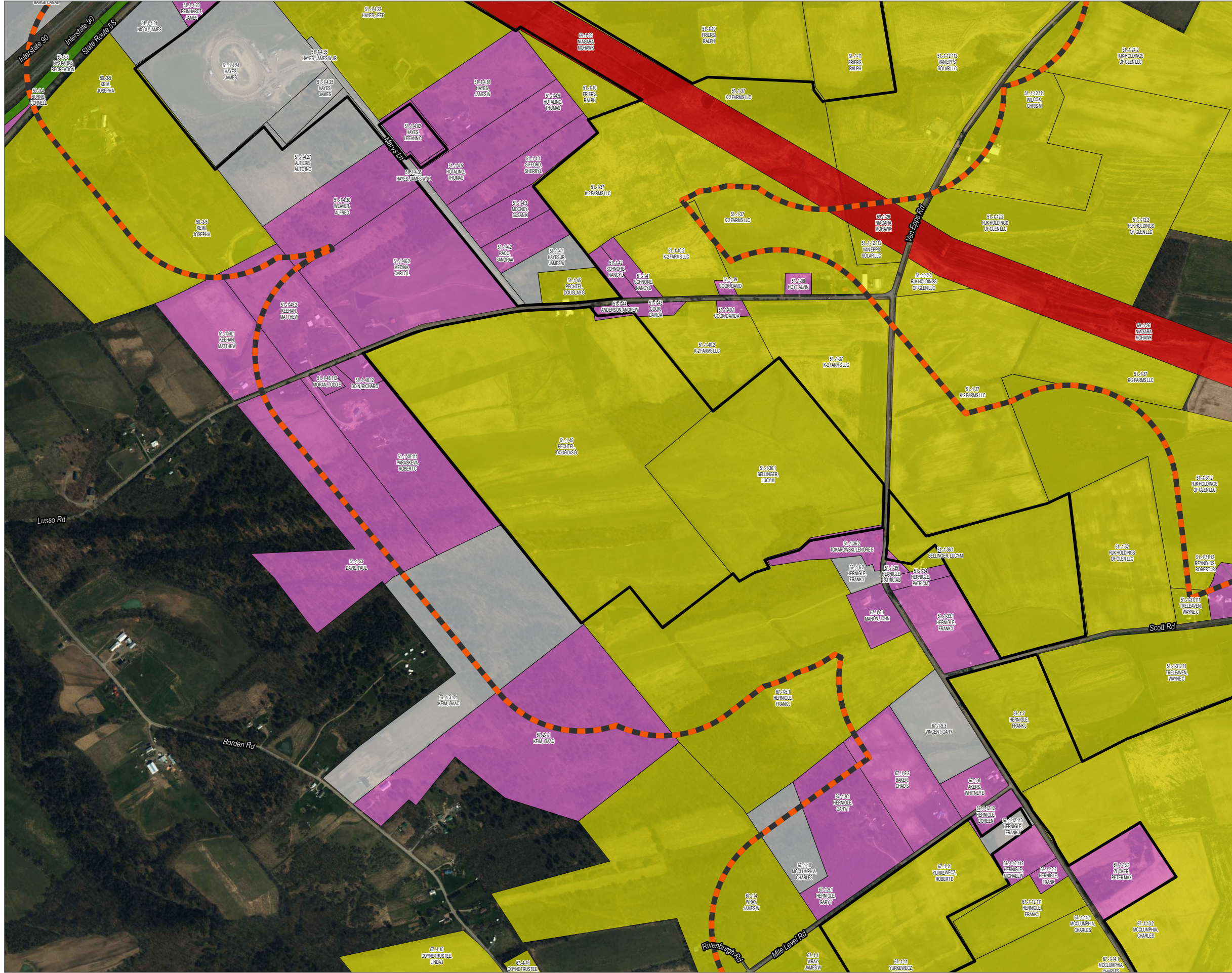
- AGRICULTURAL
- RESIDENTIAL
- VACANT LAND
- COMMERCIAL
- RECREATION AND ENTERTAINMENT
- COMMUNITY SERVICES
- INDUSTRIAL
- PUBLIC SERVICES
- WILD, FORESTED, CONSERVATION LANDS

**NOTES:**  
 1. THIS FIGURE IS DESIGNED TO BE VIEWED OR PRINTED IN COLOR AT 11X17.

BASE MAP: ESRI 'WORLD IMAGERY' BASEMAP, 3/30/2022.  
 DATA SOURCES: ESRI, NYSGIS, NYSDOT, NY ORPTS, USGS.

1:10,800  
 1" = 900'

|                                                                                                                 |                                 |
|-----------------------------------------------------------------------------------------------------------------|---------------------------------|
| PROJECT: <b>CONNECTGEN MONTGOMERY COUNTY LLC<br/>MILL POINT SOLAR I<br/>TOWN OF GLEN, MONTGOMERY COUNTY, NY</b> |                                 |
| TITLE: <b>TAX PARCELS WITHIN 1000FT<br/>OF THE FACILITY SITE</b>                                                |                                 |
| DRAWN BY: A. KAILAS                                                                                             | PROJ. NO.: 411360.1000.0000     |
| CHECKED BY: C. PEARCE                                                                                           | <b>FIGURE 3-4</b><br>MAP 1 OF 7 |
| APPROVED BY: T. KONDAK                                                                                          |                                 |
| DATE: JANUARY 2024                                                                                              |                                 |
|                                                                                                                 |                                 |
| 3 CORPORATE DRIVE<br>SUITE 202<br>CLIFTON PARK, NY 12065<br>PHONE: 518.348.1190                                 |                                 |



**LEGEND**

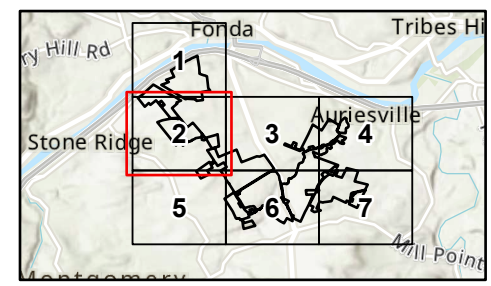
- 1000-FT BUFFER OF FACILITY BOUNDARY
- FACILITY SITE
- TOWN BOUNDARY
- VILLAGE BOUNDARY

**PROPERTY CLASS**

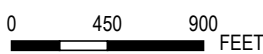
- AGRICULTURAL
- RESIDENTIAL
- VACANT LAND
- COMMERCIAL
- RECREATION AND ENTERTAINMENT
- COMMUNITY SERVICES
- INDUSTRIAL
- PUBLIC SERVICES
- WILD, FORESTED, CONSERVATION LANDS

**NOTES:**  
 1. THIS FIGURE IS DESIGNED TO BE VIEWED OR PRINTED IN COLOR AT 11X17.

BASE MAP: ESRI 'WORLD IMAGERY' BASEMAP, 3/30/2022.  
 DATA SOURCES: ESRI, NYSGIS, NYSOT, NY ORPTS, USGS.



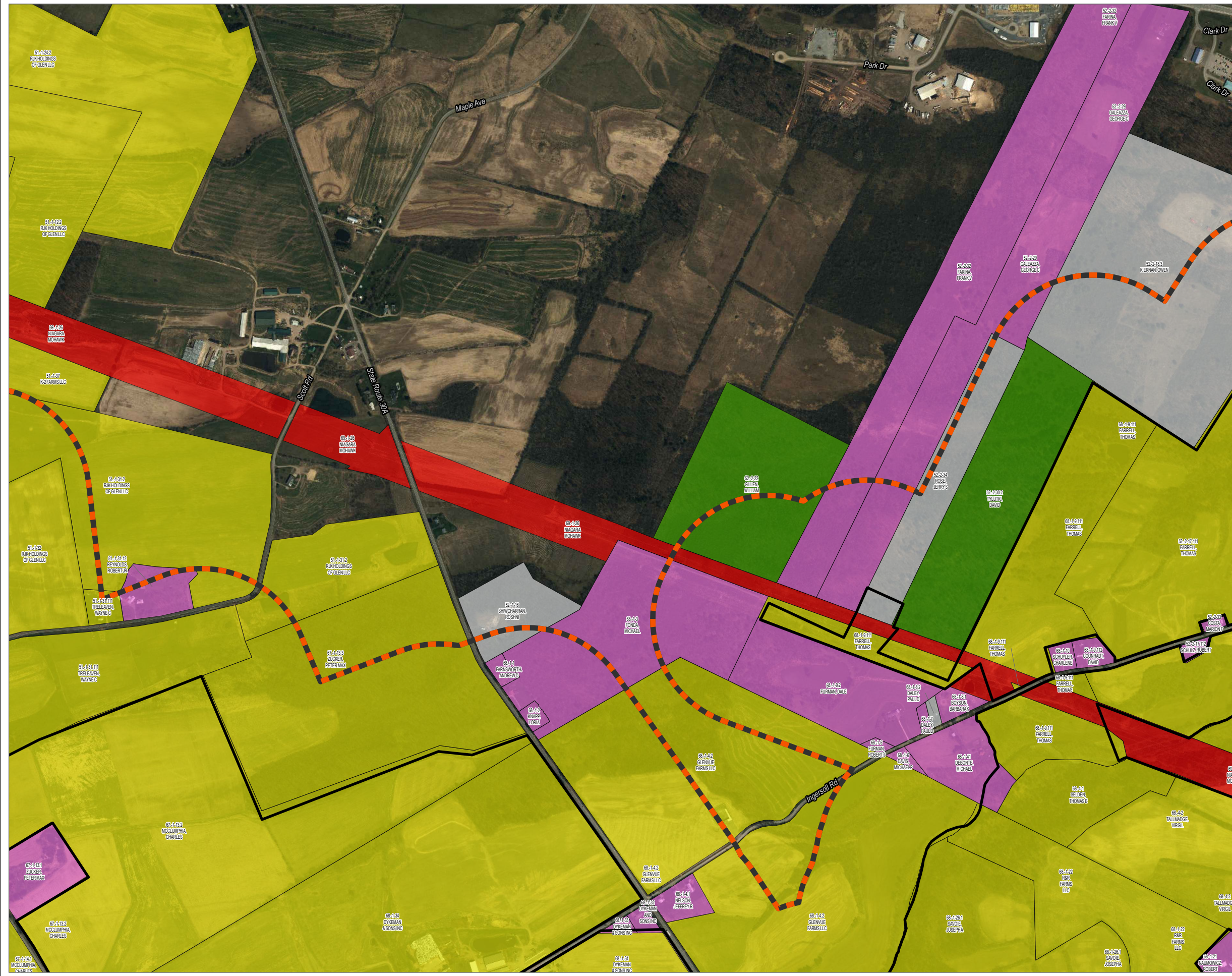
1:10,800  
 1" = 900'



|                                                                                                                 |                                 |
|-----------------------------------------------------------------------------------------------------------------|---------------------------------|
| PROJECT: <b>CONNECTGEN MONTGOMERY COUNTY LLC<br/>MILL POINT SOLAR I<br/>TOWN OF GLEN, MONTGOMERY COUNTY, NY</b> |                                 |
| TITLE: <b>TAX PARCELS WITHIN 1000FT<br/>OF THE FACILITY SITE</b>                                                |                                 |
| DRAWN BY: A. KAILAS                                                                                             | PROJ. NO.: 411360.1000.0000     |
| CHECKED BY: C. PEARCE                                                                                           | <b>FIGURE 3-4</b><br>MAP 2 OF 7 |
| APPROVED BY: T. KONDAK                                                                                          |                                 |
| DATE: JANUARY 2024                                                                                              |                                 |



3 CORPORATE DRIVE  
 SUITE 202  
 CLIFTON PARK, NY 12065  
 PHONE: 518.348.1190



**LEGEND**

- 1000-FT BUFFER OF FACILITY BOUNDARY
- FACILITY SITE
- TOWN BOUNDARY
- VILLAGE BOUNDARY

**PROPERTY CLASS**

- AGRICULTURAL
- RESIDENTIAL
- VACANT LAND
- COMMERCIAL
- RECREATION AND ENTERTAINMENT
- COMMUNITY SERVICES
- INDUSTRIAL
- PUBLIC SERVICES
- WILD, FORESTED, CONSERVATION LANDS

**NOTES:**  
 1. THIS FIGURE IS DESIGNED TO BE VIEWED OR PRINTED IN COLOR AT 11X17.

BASE MAP: ESRI 'WORLD IMAGERY' BASEMAP, 3/30/2022.  
 DATA SOURCES: ESRI, NYSGIS, NYSDOT, NY ORPTS, USGS.

1:10,800  
 1" = 900'

|                                                                                                                 |                                  |
|-----------------------------------------------------------------------------------------------------------------|----------------------------------|
| PROJECT: <b>CONNECTGEN MONTGOMERY COUNTY LLC<br/>MILL POINT SOLAR I<br/>TOWN OF GLEN, MONTGOMERY COUNTY, NY</b> |                                  |
| TITLE: <b>TAX PARCELS WITHIN 1000FT<br/>OF THE FACILITY SITE</b>                                                |                                  |
| DRAWN BY: A. KAILAS                                                                                             | PROJ. NO.: 411360.1000.0000      |
| CHECKED BY: C. PEARCE                                                                                           | <b>FIGURE 3-4<br/>MAP 3 OF 7</b> |
| APPROVED BY: T. KONDAK                                                                                          |                                  |
| DATE: JANUARY 2024                                                                                              |                                  |
|                                                                                                                 |                                  |
| 3 CORPORATE DRIVE<br>SUITE 202<br>CLIFTON PARK, NY 12065<br>PHONE: 518.348.1190                                 |                                  |



**LEGEND**

- 1000-FT BUFFER OF FACILITY BOUNDARY
- FACILITY SITE
- TOWN BOUNDARY
- VILLAGE BOUNDARY
- PROPERTY CLASS
- AGRICULTURAL
- RESIDENTIAL
- VACANT LAND
- COMMERCIAL
- RECREATION AND ENTERTAINMENT
- COMMUNITY SERVICES
- INDUSTRIAL
- PUBLIC SERVICES
- WILD, FORESTED, CONSERVATION LANDS

NOTES:  
 1. THIS FIGURE IS DESIGNED TO BE VIEWED OR PRINTED IN COLOR AT 11X17.

BASE MAP: ESRI 'WORLD IMAGERY' BASEMAP, 3/30/2022.  
 DATA SOURCES: ESRI, NYSGIS, NYSDOT, NY ORPTS, USGS.

1:10,800  
 1" = 900'

|                                                                                                                 |                                  |
|-----------------------------------------------------------------------------------------------------------------|----------------------------------|
| PROJECT: <b>CONNECTGEN MONTGOMERY COUNTY LLC<br/>MILL POINT SOLAR I<br/>TOWN OF GLEN, MONTGOMERY COUNTY, NY</b> |                                  |
| TITLE: <b>TAX PARCELS WITHIN 1000FT<br/>OF THE FACILITY SITE</b>                                                |                                  |
| DRAWN BY: A. KAILAS                                                                                             | PROJ. NO.: 411360.1000.0000      |
| CHECKED BY: C. PEARCE                                                                                           | <b>FIGURE 3-4<br/>MAP 4 OF 7</b> |
| APPROVED BY: T. KONDAK                                                                                          |                                  |
| DATE: JANUARY 2024                                                                                              |                                  |

3 CORPORATE DRIVE  
 SUITE 202  
 CLIFTON PARK, NY 12065  
 PHONE: 518.348.1190



**LEGEND**

- 1000-FT BUFFER OF FACILITY BOUNDARY
- FACILITY SITE
- TOWN BOUNDARY
- VILLAGE BOUNDARY

**PROPERTY CLASS**

- AGRICULTURAL
- RESIDENTIAL
- VACANT LAND
- COMMERCIAL
- RECREATION AND ENTERTAINMENT
- COMMUNITY SERVICES
- INDUSTRIAL
- PUBLIC SERVICES
- WILD, FORESTED, CONSERVATION LANDS

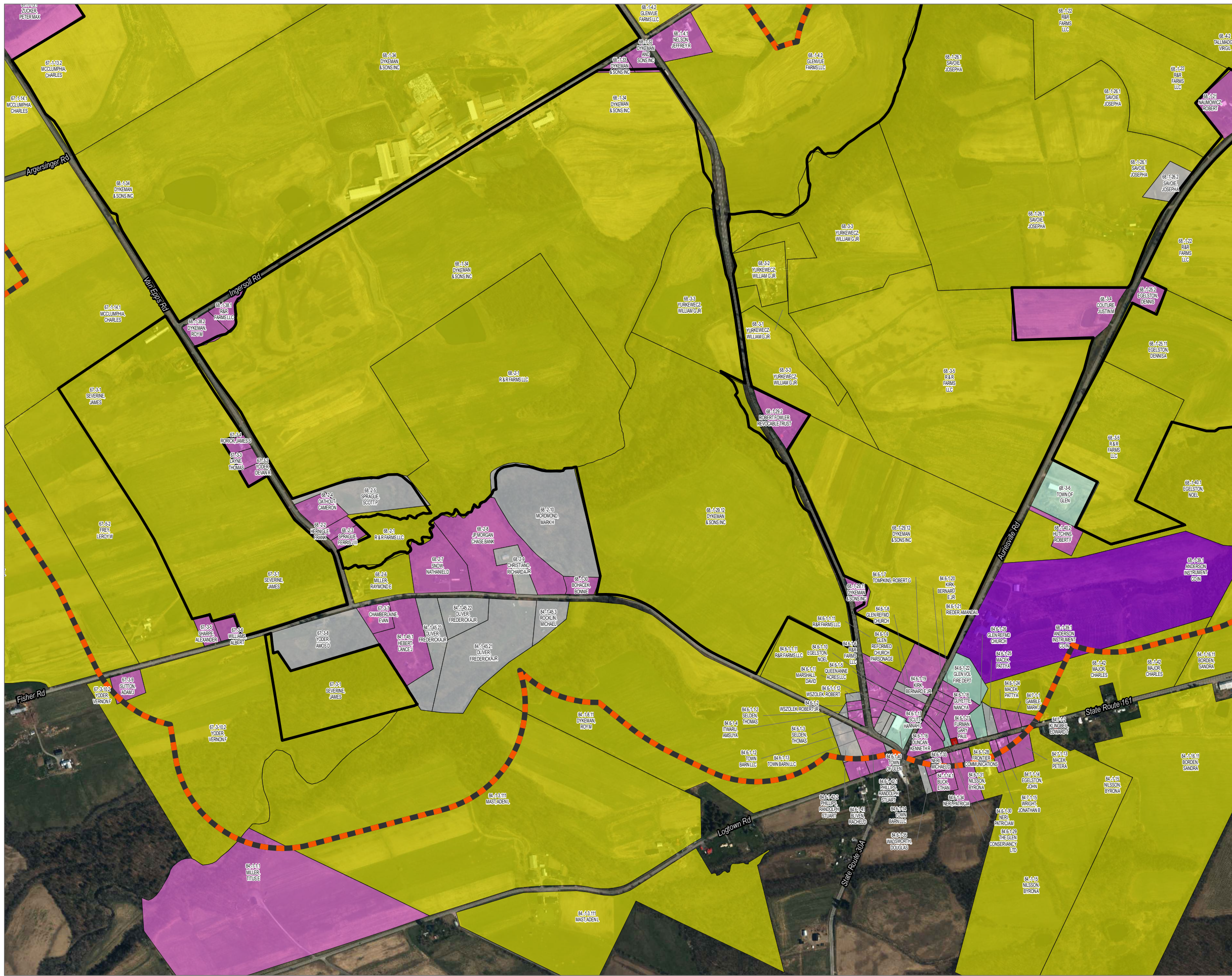
**NOTES:**  
 1. THIS FIGURE IS DESIGNED TO BE VIEWED OR PRINTED IN COLOR AT 11X17.

BASE MAP: ESRI 'WORLD IMAGERY' BASEMAP, 3/30/2022.  
 DATA SOURCES: ESRI, NYSGIS, NYSOT, NY ORPTS, USGS.

1:10,800  
 1" = 900'

|                                                                                                                 |                                 |
|-----------------------------------------------------------------------------------------------------------------|---------------------------------|
| PROJECT: <b>CONNECTGEN MONTGOMERY COUNTY LLC<br/>MILL POINT SOLAR I<br/>TOWN OF GLEN, MONTGOMERY COUNTY, NY</b> |                                 |
| TITLE: <b>TAX PARCELS WITHIN 1000FT<br/>OF THE FACILITY SITE</b>                                                |                                 |
| DRAWN BY: A. KAILAS                                                                                             | PROJ. NO.: 411360.1000.0000     |
| CHECKED BY: C. PEARCE                                                                                           | <b>FIGURE 3-4</b><br>MAP 5 OF 7 |
| APPROVED BY: T. KONDAK                                                                                          |                                 |
| DATE: JANUARY 2024                                                                                              |                                 |

3 CORPORATE DRIVE  
 SUITE 202  
 CLIFTON PARK, NY 12065  
 PHONE: 518.348.1190



**LEGEND**

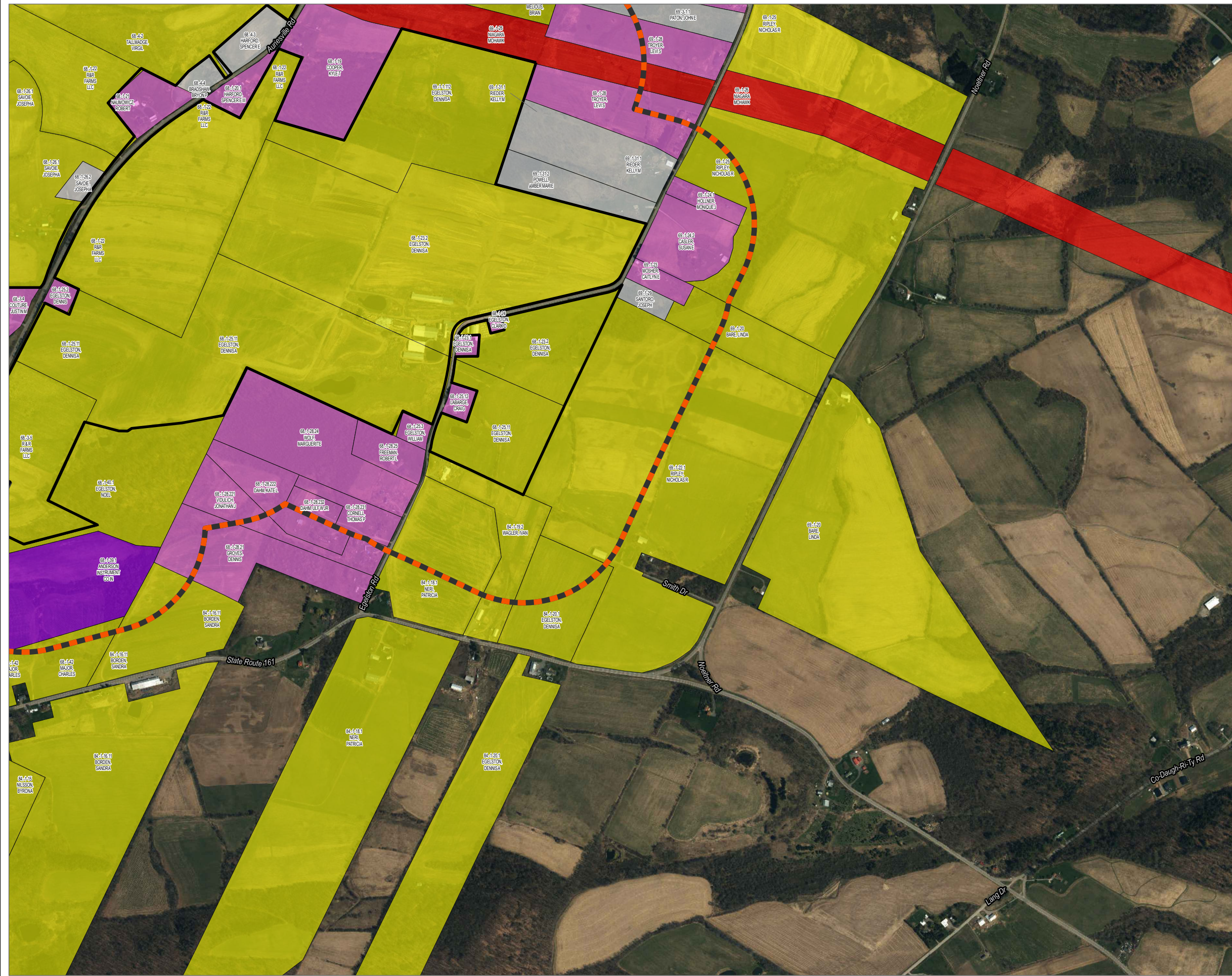
- 1000-FT BUFFER OF FACILITY BOUNDARY
- FACILITY SITE
- TOWN BOUNDARY
- VILLAGE BOUNDARY
- PROPERTY CLASS**
- AGRICULTURAL
- RESIDENTIAL
- VACANT LAND
- COMMERCIAL
- RECREATION AND ENTERTAINMENT
- COMMUNITY SERVICES
- INDUSTRIAL
- PUBLIC SERVICES
- WILD, FORESTED, CONSERVATION LANDS

**NOTES:**  
 1. THIS FIGURE IS DESIGNED TO BE VIEWED OR PRINTED IN COLOR AT 11X17.

BASE MAP: ESRI 'WORLD IMAGERY' BASEMAP, 3/30/2022.  
 DATA SOURCES: ESRI, NYSGIS, NYSDOT, NY ORPTS, USGS.

1:10,800  
 1" = 900'

|                                                                                                                 |                                  |
|-----------------------------------------------------------------------------------------------------------------|----------------------------------|
| PROJECT: <b>CONNECTGEN MONTGOMERY COUNTY LLC<br/>MILL POINT SOLAR I<br/>TOWN OF GLEN, MONTGOMERY COUNTY, NY</b> |                                  |
| TITLE: <b>TAX PARCELS WITHIN 1000FT<br/>OF THE FACILITY SITE</b>                                                |                                  |
| DRAWN BY: A. KAILAS                                                                                             | PROJ. NO.: 411360.1000.0000      |
| CHECKED BY: C. PEARCE                                                                                           | <b>FIGURE 3-4<br/>MAP 6 OF 7</b> |
| APPROVED BY: T. KONDAK                                                                                          |                                  |
| DATE: JANUARY 2024                                                                                              |                                  |
|                                                                                                                 |                                  |
| 3 CORPORATE DRIVE<br>SUITE 202<br>CLIFTON PARK, NY 12065<br>PHONE: 518.348.1190                                 |                                  |

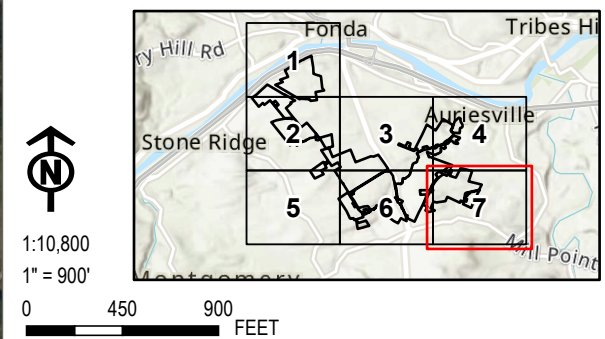


**LEGEND**

- 1000-FT BUFFER OF FACILITY BOUNDARY
- FACILITY SITE
- TOWN BOUNDARY
- VILLAGE BOUNDARY
- PROPERTY CLASS
- AGRICULTURAL
- RESIDENTIAL
- VACANT LAND
- COMMERCIAL
- RECREATION AND ENTERTAINMENT
- COMMUNITY SERVICES
- INDUSTRIAL
- PUBLIC SERVICES
- WILD, FORESTED, CONSERVATION LANDS

**NOTES:**  
 1. THIS FIGURE IS DESIGNED TO BE VIEWED OR PRINTED IN COLOR AT 11X17.

BASE MAP: ESRI 'WORLD IMAGERY' BASEMAP, 3/30/2022.  
 DATA SOURCES: ESRI, NYSGIS, NYSOT, NY ORPTS, USGS.



|                                                                                                                 |                                 |
|-----------------------------------------------------------------------------------------------------------------|---------------------------------|
| PROJECT: <b>CONNECTGEN MONTGOMERY COUNTY LLC<br/>MILL POINT SOLAR I<br/>TOWN OF GLEN, MONTGOMERY COUNTY, NY</b> |                                 |
| TITLE: <b>TAX PARCELS WITHIN 1000FT<br/>OF THE FACILITY SITE</b>                                                |                                 |
| DRAWN BY: A. KAILAS                                                                                             | PROJ. NO.: 411360.1000.0000     |
| CHECKED BY: C. PEARCE                                                                                           |                                 |
| APPROVED BY: T. KONDAK                                                                                          |                                 |
| DATE: JANUARY 2024                                                                                              | <b>FIGURE 3-4</b><br>MAP 7 OF 7 |