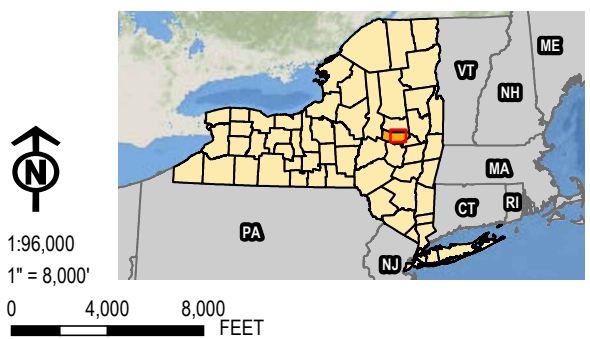


- BOAT LAUNCH SITES
 - HIKING TRAILS
 - SNOWMOBILE ROUTES
 - SCENIC BYWAYS
 - BIKE ROUTES
 - TROUT STREAM FISHING ACCESS
 - LWRP COMMUNITY
 - FACILITY SITE
 - 5 MILE STUDY AREA
 - VILLAGE BOUNDARY
 - TOWN BOUNDARY
 - NRCS CONSERVATION EASEMENT
 - FEMA FLOOD HAZARD AREA
- OWNERSHIP**
- FEDERAL
 - STATE
 - LOCAL GOVERNMENT
 - NON-GOVERNMENTAL ORGANIZATION
 - PRIVATE
- AGRICULTURAL DISTRICT**
- FULTON COUNTY AGRICULTURAL DISTRICT 1
 - MONTGOMERY AGRICULTURAL DISTRICT 1
 - MONTGOMERY AGRICULTURAL DISTRICT 2
 - MONTGOMERY AGRICULTURAL DISTRICT 3
 - PRINCIPAL AQUIFERS

NOTES:
 1. THIS FIGURE IS DESIGNED TO BE VIEWED OR PRINTED IN COLOR AT 11X17.

BASE MAP: USGS NATIONAL MAP BASEMAP.
 DATA SOURCES: TRC, NYSGIS, NYS DOT, NYS DEC, USGS, FEMA, ESRI.



PROJECT: CONNECTGEN MONTGOMERY COUNTY LLC MILL POINT SOLAR I TOWN OF GLEN, MONTGOMERY COUNTY, NY	
TITLE: DESIGNATED AREAS WITHIN THE STUDY AREA	
DRAWN BY: A. KAILAS	PROJ. NO.: 411360.1000.0000
CHECKED BY: A. CORDAS	FIGURE 3-6
APPROVED BY: T. KONDAK	
DATE: DECEMBER 2023	

3 CORPORATE DRIVE
 SUITE 202
 CLIFTON PARK, NY 12065
 PHONE: 518.348.1190