

DWG NO.	DRAWING TITLE	DATE	REV.	DATE	REV.
MPS-E-400-00	COVER SHEET	09/01/23	B	01/15/24	C
MPS-E-400-01	OVERALL SITE PLAN	09/01/23	B	01/15/24	C
MPS-E-401-01	ARRAY PLAN 01	09/01/23	B	01/15/24	C
MPS-E-401-02	ARRAY PLAN 02	09/01/23	B	01/15/24	C
MPS-E-401-03	ARRAY PLAN 03	09/01/23	B	01/15/24	C
MPS-E-401-04	ARRAY PLAN 04	09/01/23	B	01/15/24	C
MPS-E-401-05	ARRAY PLAN 05	09/01/23	B	01/15/24	C
MPS-E-401-06	ARRAY PLAN 06	09/01/23	B	01/15/24	C
MPS-E-401-07	ARRAY PLAN 07	09/01/23	B	01/15/24	C
MPS-E-401-08	ARRAY PLAN 08	09/01/23	B	01/15/24	C
MPS-E-401-09	ARRAY PLAN 09	09/01/23	B	01/15/24	C
MPS-E-401-10	ARRAY PLAN 10	09/01/23	B	01/15/24	C
MPS-E-401-11	ARRAY PLAN 11	09/01/23	B	01/15/24	C
MPS-E-401-12	ARRAY PLAN 12	09/01/23	B	01/15/24	C
MPS-E-401-13	ARRAY PLAN 13	09/01/23	B	01/15/24	C
MPS-E-401-14	ARRAY PLAN 14	09/01/23	B	01/15/24	C
MPS-E-401-15	ARRAY PLAN 15	09/01/23	B	01/15/24	C
MPS-E-401-16	ARRAY PLAN 16	09/01/23	B	01/15/24	C
MPS-E-401-17	ARRAY PLAN 17	09/01/23	B	01/15/24	C
MPS-E-401-18	ARRAY PLAN 18	09/01/23	B	01/15/24	C
MPS-E-401-19	ARRAY PLAN 19	09/01/23	B	01/15/24	C
MPS-E-402-01	TYPICAL DC SINGLE LINE DIAGRAM	09/01/23	B	01/15/24	C
MPS-E-403-01	SINGLE-AXIS TRACKER DETAILS	09/01/23	B	01/15/24	C
MPS-E-404-01	INVERTER SKID PLAN AND ELEVATION	09/01/23	B	01/15/24	C
MPS-E-405-01	O & M BUILDING PLAN AND ELEVATIONS	09/01/23	B	01/15/24	C
MPS-E-406-01	EQUIPMENT DATA SHEETS	09/01/23	B	01/15/24	C
MPS-E-407-01	DC TRENCH DETAILS	09/01/23	B	01/15/24	C

# MILL POINT SOLAR I PROJECT

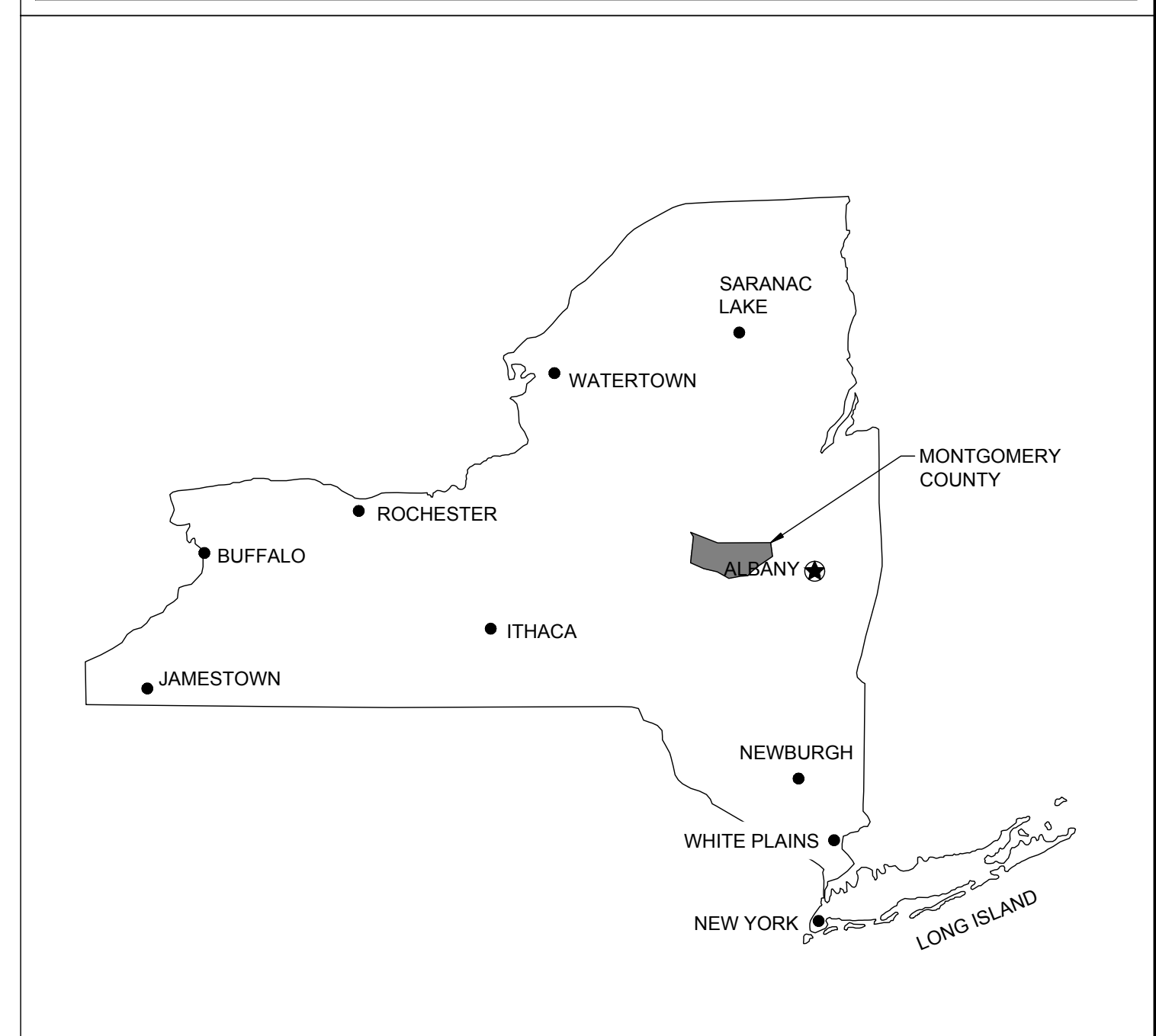
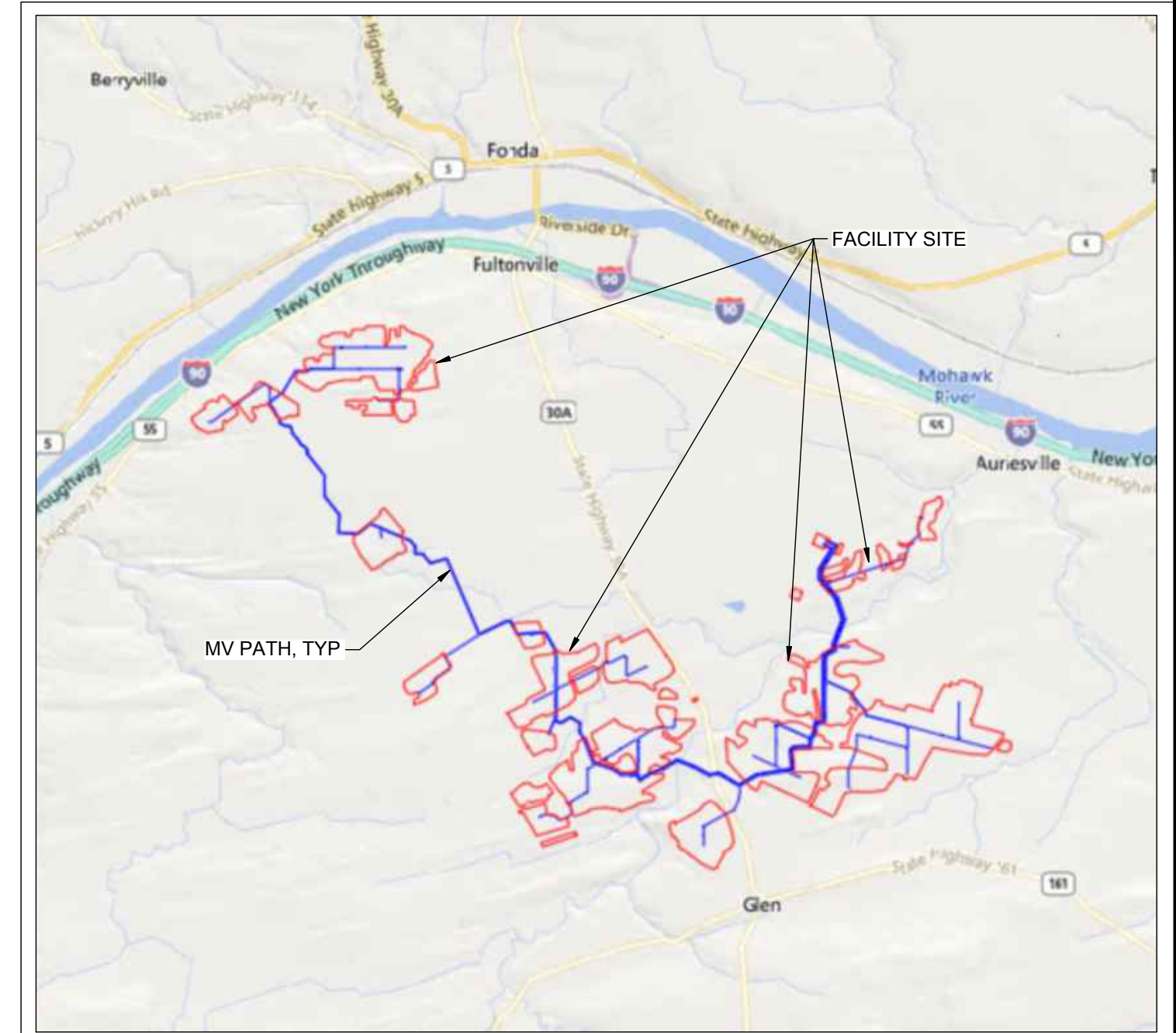
**PREPARED FOR: CONNECTGEN MONTGOMERY COUNTY LLC**  
**PREPARED BY: TRC COMPANIES, INC.**  
**ISSUE DATE: 01/15/2024**  
**ISSUE STATUS: ISSUED FOR 94-C**

## PROJECT DATA

**LOCATION: MONTGOMERY COUNTY, NY**  
**PROJECTION: STATE PLANE NAD 83 (NY82-EF)**  
**POWER GENERATED: 250 MWac**

**THESE DESIGN DRAWINGS HAVE BEEN CREATED AT THE DIRECTION OF A PROFESSIONAL ENGINEER LICENSED IN THE STATE OF NEW YORK.**  
**ENGINEER OF RECORD: JAYME GARCIA, LICENSE #090650**

## SITE MAP

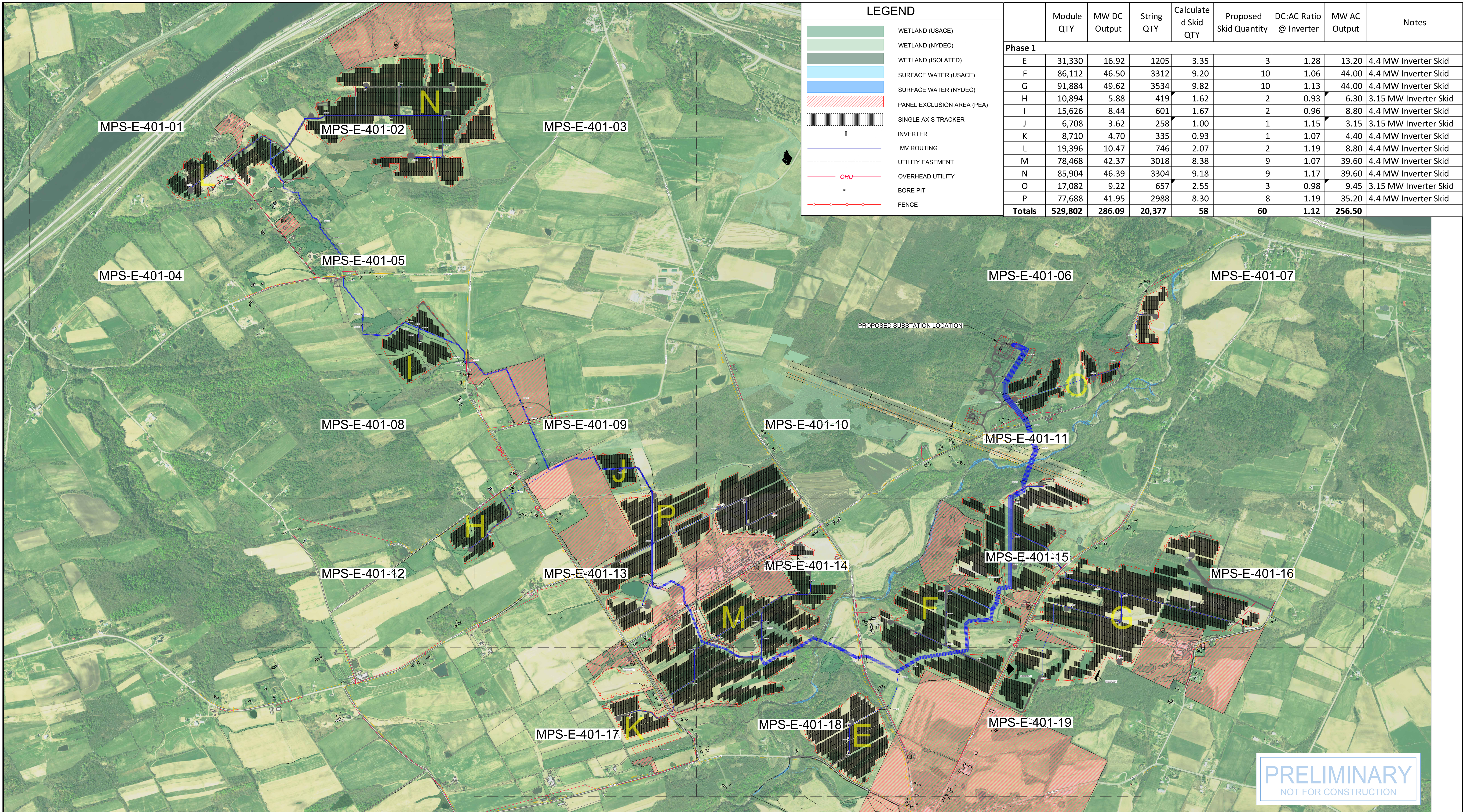


THE STATE OF NEW YORK

**PRELIMINARY**  
 NOT FOR CONSTRUCTION

670 NORTH COMMERCIAL STREET SUITE 203 MANCHESTER, NH 03101		PROJECT NO: 443269						DESIGNED DRAWN CHECKED APPROVED		MILL POINT SOLAR I PROJECT CONNECTGEN MONTGOMERY COUNTY LLC COVER SHEET		GLEN NEW YORK	
REFERENCE ITEMS	REV	DESCRIPTION	DATE	DES	CHK	APP	REVIEW 1	REVIEW 2	DATE	SCALE	TRC	MPS-E-400-00	REV.
	C	ISSUED FOR 94-C	01/15/24	JAK	JTG	DVL			01/15/24	AS NOTED			C
	B	ISSUED FOR REVIEW	09/01/23	JAK	JTG	DVL							
	A	ISSUED FOR REVIEW	08/11/23	JAK	JTG	DVL							



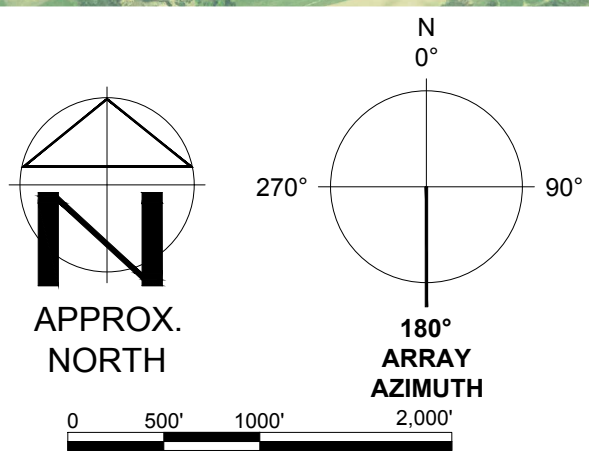


**LEGEND**

- WETLAND (USACE)
- WETLAND (NYDEC)
- WETLAND (ISOLATED)
- SURFACE WATER (USACE)
- SURFACE WATER (NYDEC)
- PANEL EXCLUSION AREA (PEA)
- SINGLE AXIS TRACKER
- INVERTER
- MV ROUTING
- UTILITY EASEMENT
- OVERHEAD UTILITY
- BORE PIT
- FENCE

	Module QTY	MW DC Output	String QTY	Calculated Skid QTY	Proposed Skid Quantity	DC:AC Ratio @ Inverter	MW AC Output	Notes
<b>Phase 1</b>								
E	31,330	16.92	1205	3.35	3	1.28	13.20	4.4 MW Inverter Skid
F	86,112	46.50	3312	9.20	10	1.06	44.00	4.4 MW Inverter Skid
G	91,884	49.62	3534	9.82	10	1.13	44.00	4.4 MW Inverter Skid
H	10,894	5.88	419	1.62	2	0.93	6.30	3.15 MW Inverter Skid
I	15,626	8.44	601	1.67	2	0.96	8.80	4.4 MW Inverter Skid
J	6,708	3.62	258	1.00	1	1.15	3.15	3.15 MW Inverter Skid
K	8,710	4.70	335	0.93	1	1.07	4.40	4.4 MW Inverter Skid
L	19,396	10.47	746	2.07	2	1.19	8.80	4.4 MW Inverter Skid
M	78,468	42.37	3018	8.38	9	1.07	39.60	4.4 MW Inverter Skid
N	85,904	46.39	3304	9.18	9	1.17	39.60	4.4 MW Inverter Skid
O	17,082	9.22	657	2.55	3	0.98	9.45	3.15 MW Inverter Skid
P	77,688	41.95	2988	8.30	8	1.19	35.20	4.4 MW Inverter Skid
<b>Totals</b>	<b>529,802</b>	<b>286.09</b>	<b>20,377</b>	<b>58</b>	<b>60</b>	<b>1.12</b>	<b>256.50</b>	

**PRELIMINARY**  
NOT FOR CONSTRUCTION



**TRC** 670 NORTH COMMERCIAL STREET SUITE 203  
MANCHESTER, NH 03101

PROJECT NO: 443269

REFERENCE ITEMS	REV	DESCRIPTION	DATE	DES	CHK	APP
	C	ISSUED FOR 94-C	01/15/24	JAK	JTG	DVL
	B	ISSUED FOR REVIEW	09/01/23	JAK	JTG	DVL
	A	ISSUED FOR REVIEW	08/11/23	JAK	JTG	DVL



JAK DESIGNED  
JAK DRAWN  
JTG CHECKED  
DVL APPROVED

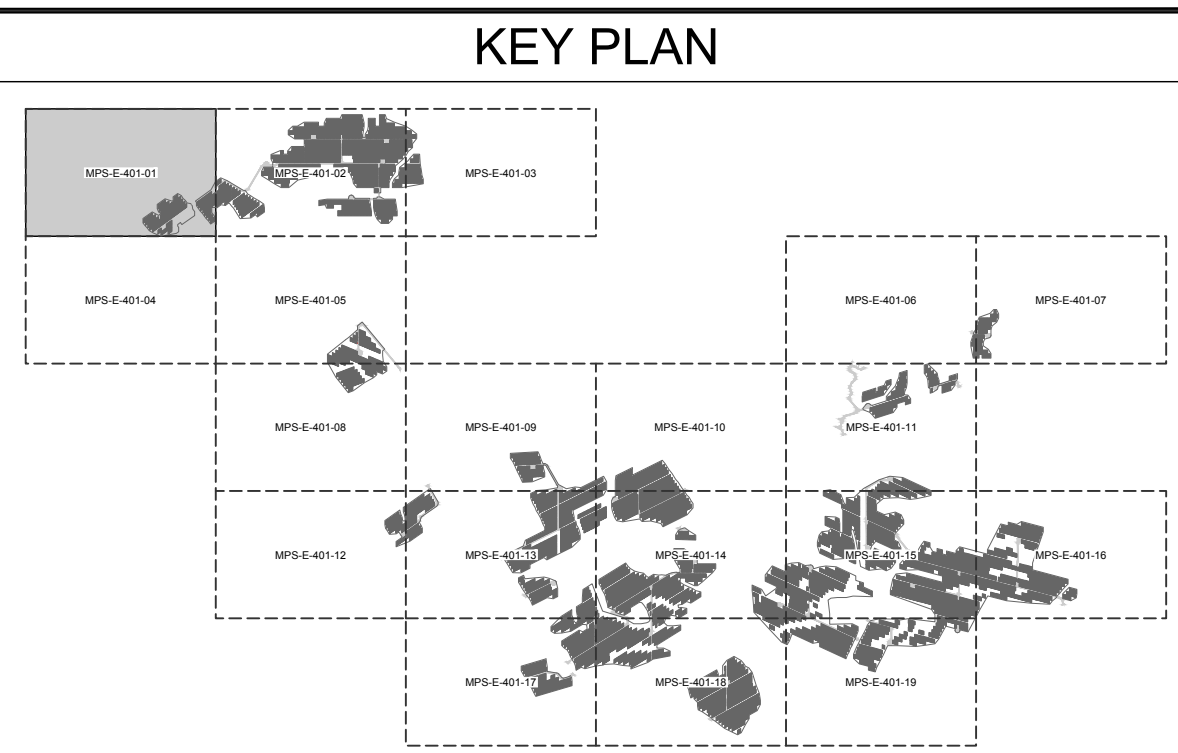
MILL POINT SOLAR I PROJECT  
CONNECTGEN MONTGOMERY COUNTY LLC  
OVERALL SITE PLAN

GLEN NEW YORK

REVIEW 1 DATE: 01/15/24  
REVIEW 2 DATE: AS NOTED

**TRC** MPS-E-400-01





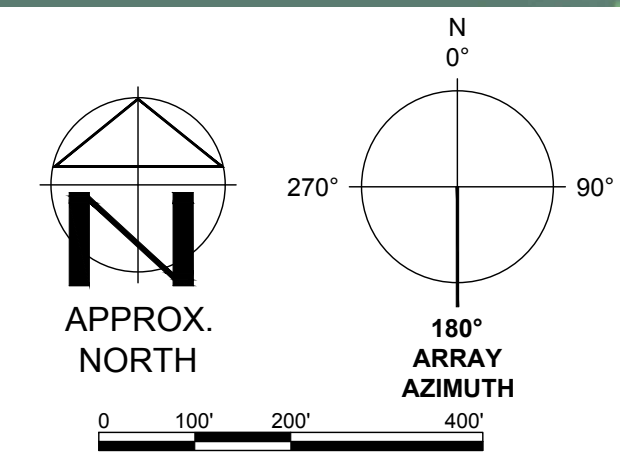
### LEGEND

	WETLAND (USACE)
	WETLAND (NYDEC)
	WETLAND (ISOLATED)
	SURFACE WATER (USACE)
	SURFACE WATER (NYDEC)
	PANEL EXCLUSION AREA (PEA)
	SINGLE AXIS TRACKER
	INVERTER
	MV ROUTING
	UTILITY EASEMENT
	OVERHEAD UTILITY
	BORE PIT
	FENCE

**NOTES:**

1. NEW MV CIRCUITS CROSS CREEK AT AN ANGLE BECAUSE THEY HAVE TO CROSS TRANSMISSION EASEMENT PERPENDICULARLY.

**PRELIMINARY**  
NOT FOR CONSTRUCTION



**TRC** 670 NORTH COMMERCIAL STREET SUITE 203  
MANCHESTER, NH 03101

PROJECT NO: 443269



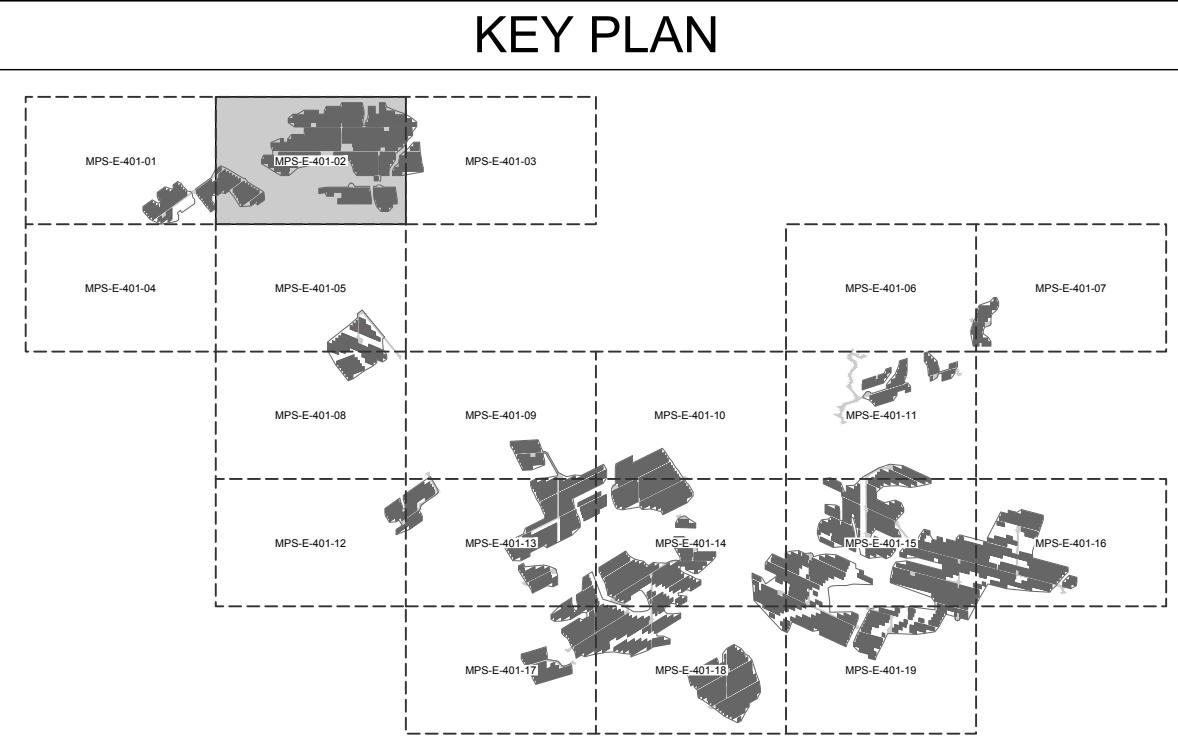
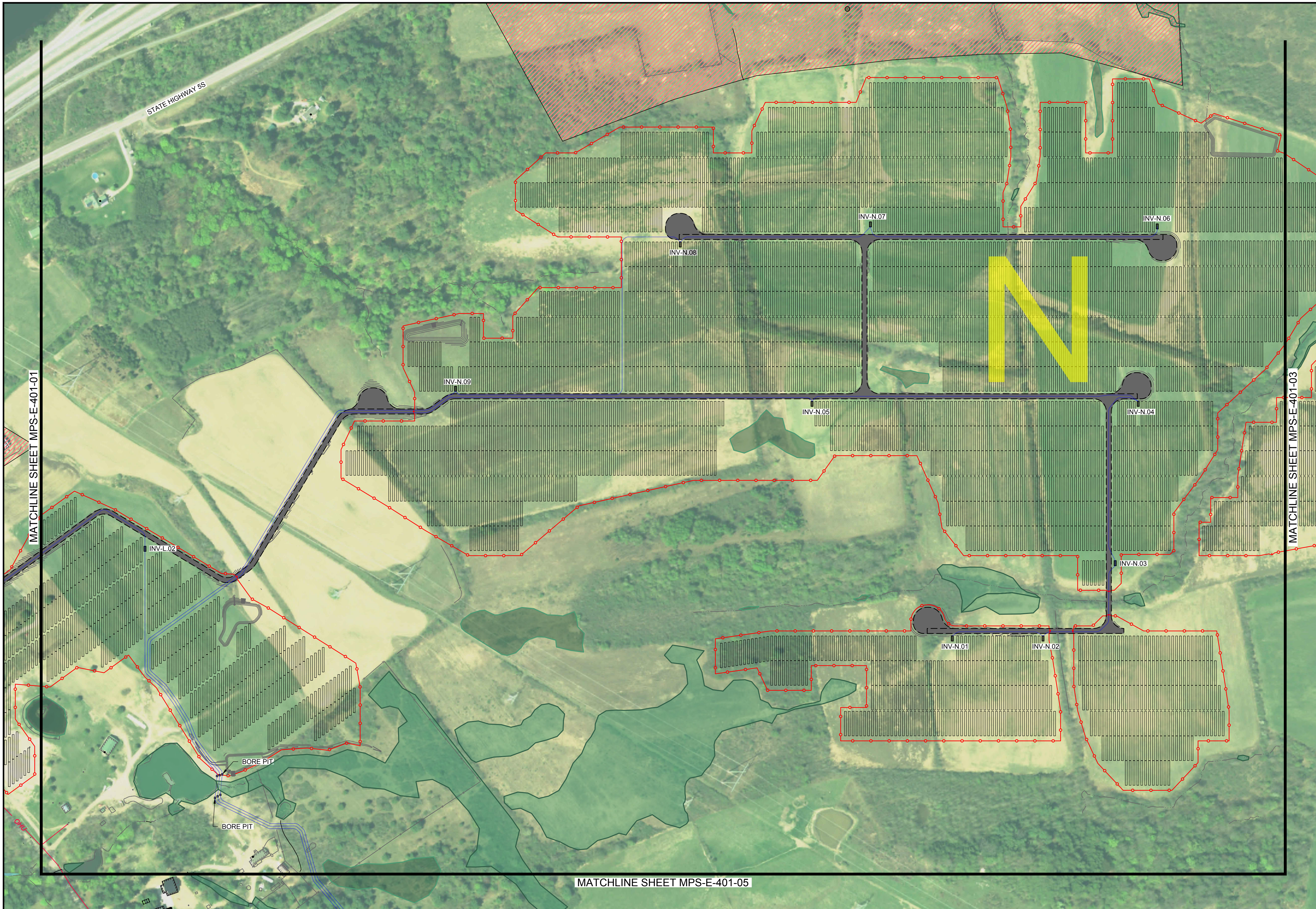
JAK DESIGNED
JAK DRAWN
JTG CHECKED
DVL APPROVED
REVIEW 1
REVIEW 2

MILL POINT SOLAR I PROJECT  
CONNECTGEN MONTGOMERY COUNTY LLC  
ARRAY PLAN 1

GLEN	NEW YORK
01/15/24 DATE AS NOTED SCALE	MPS-E-401-01
<b>TRC</b>	REV: C

REFERENCE ITEMS	REV	DESCRIPTION	DATE	DES	CHK	APP
	C	ISSUED FOR 94-C	01/15/24	JAK	JTG	DVL
	B	ISSUED FOR REVIEW	09/01/23	JAK	JTG	DVL
	A	ISSUED FOR REVIEW	08/11/23	JAK	JTG	DVL



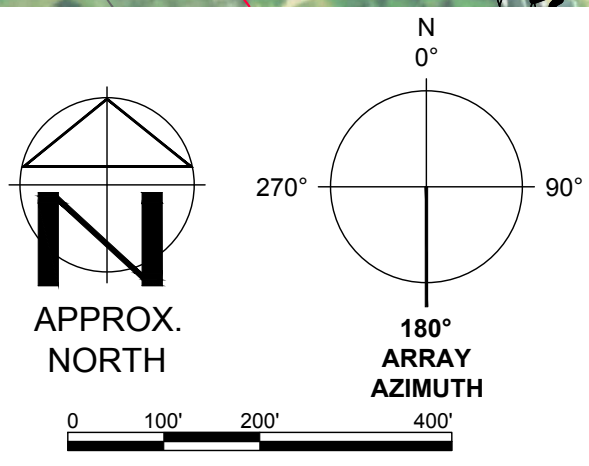


**LEGEND**

	WETLAND (USACE)
	WETLAND (NYDEC)
	WETLAND (ISOLATED)
	SURFACE WATER (USACE)
	SURFACE WATER (NYDEC)
	PANEL EXCLUSION AREA (PEA)
	SINGLE AXIS TRACKER
	INVERTER
	MV ROUTING
	UTILITY EASEMENT
	OVERHEAD UTILITY
	BORE PIT
	FENCE

**NOTES:**  
 1. NEW MV CIRCUITS CROSS CREEK AT AN ANGLE BECAUSE THEY HAVE TO CROSS TRANSMISSION EASEMENT PERPENDICULARLY.

**PRELIMINARY**  
 NOT FOR CONSTRUCTION



MATCH LINE  
 SEE SHEET MPS-E-400-06

**TRC** 670 NORTH COMMERCIAL STREET SUITE 203  
 MANCHESTER, NH 03101

PROJECT NO: 443269

REFERENCE ITEMS	REV	DESCRIPTION	DATE	DES	CHK	APP
	C	ISSUED FOR 94-C	01/15/24	JAK	JTG	DVL
	B	ISSUED FOR REVIEW	09/01/23	JAK	JTG	DVL
	A	ISSUED FOR REVIEW	08/11/23	JAK	JTG	DVL



JAK DESIGNED
JAK DRAWN
JTG CHECKED
DVL APPROVED
REVIEW 1
REVIEW 2

MILL POINT SOLAR 1 PROJECT  
 CONNECTGEN MONTGOMERY COUNTY LLC  
 ARRAY PLAN 2

GLEN NEW YORK

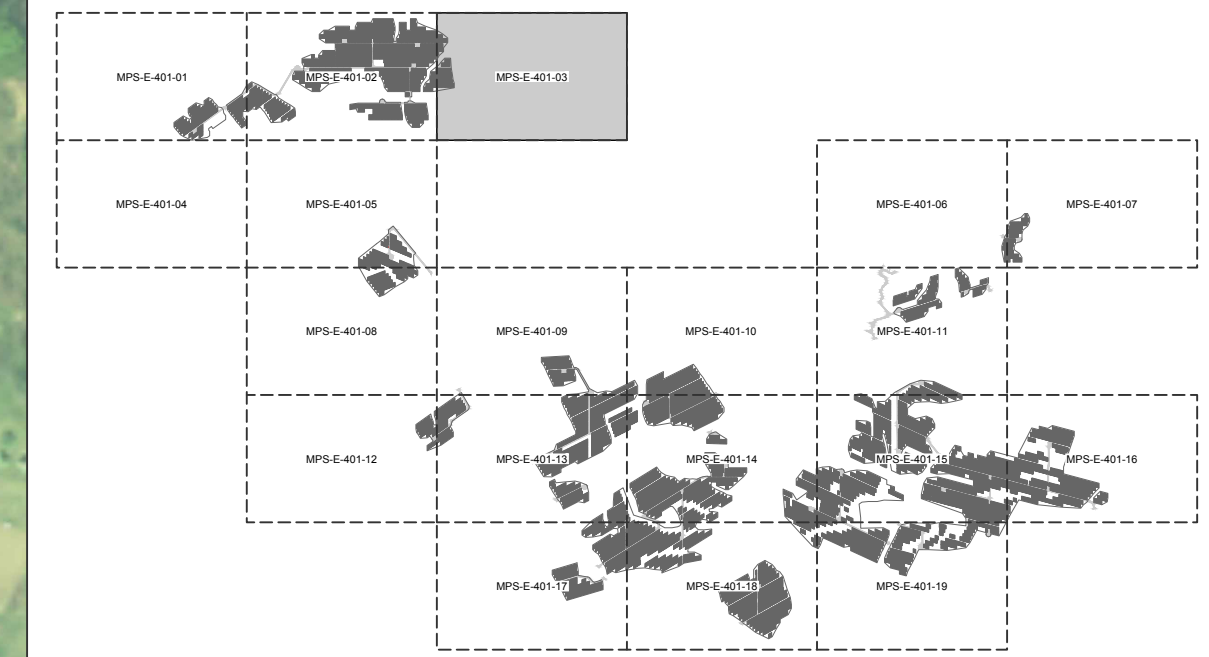
**TRC** MPS-E-401-02

REV: C





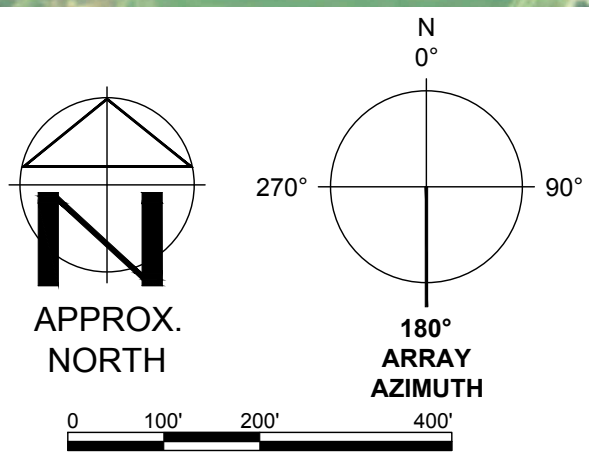
**KEY PLAN**



**LEGEND**

- WETLAND (USACE)
- WETLAND (NYDEC)
- WETLAND (ISOLATED)
- SURFACE WATER (USACE)
- SURFACE WATER (NYDEC)
- PANEL EXCLUSION AREA (PEA)
- SINGLE AXIS TRACKER
- INVERTER
- MV ROUTING
- UTILITY EASEMENT
- OHU OVERHEAD UTILITY
- BORE PIT
- FENCE

**PRELIMINARY**  
NOT FOR CONSTRUCTION



**TRC** 670 NORTH COMMERCIAL STREET SUITE 203  
MANCHESTER, NH 03101

PROJECT NO: 443269

REFERENCE ITEMS	REV	DESCRIPTION	DATE	DES	CHK	APP
	C	ISSUED FOR 94-C	01/15/24	JAK	JTG	DVL
	B	ISSUED FOR REVIEW	09/01/23	JAK	JTG	DVL
	A	ISSUED FOR REVIEW	08/11/23	JAK	JTG	DVL



JAK DESIGNED
JAK DRAWN
JTG CHECKED
DVL APPROVED
REVIEW 1
REVIEW 2

MILL POINT SOLAR I PROJECT  
CONNECTGEN MONTGOMERY COUNTY LLC  
ARRAY PLAN 3

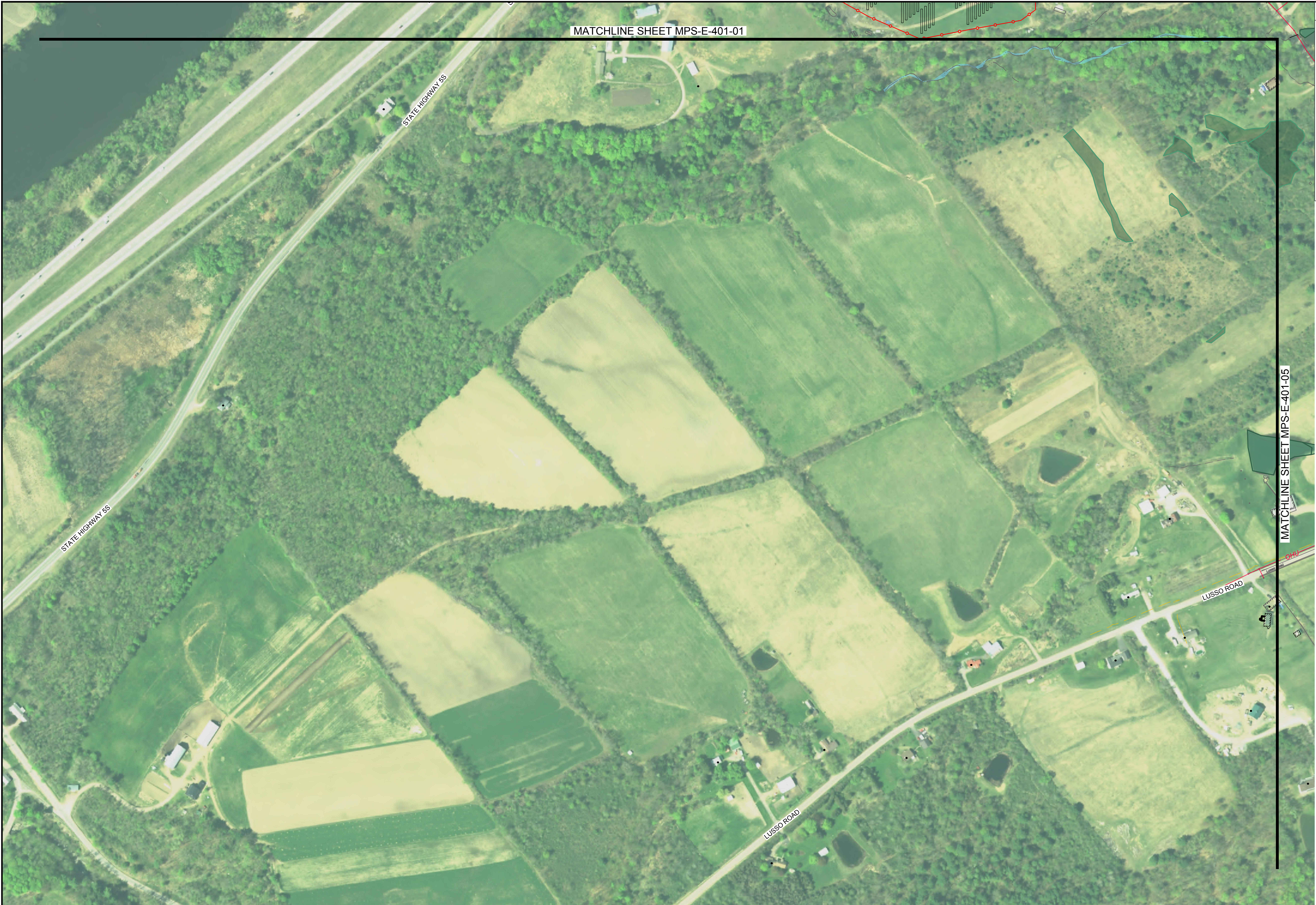
GLEN NEW YORK

			MPS-E-401-03	REV: C
--	--	--	--------------	--------

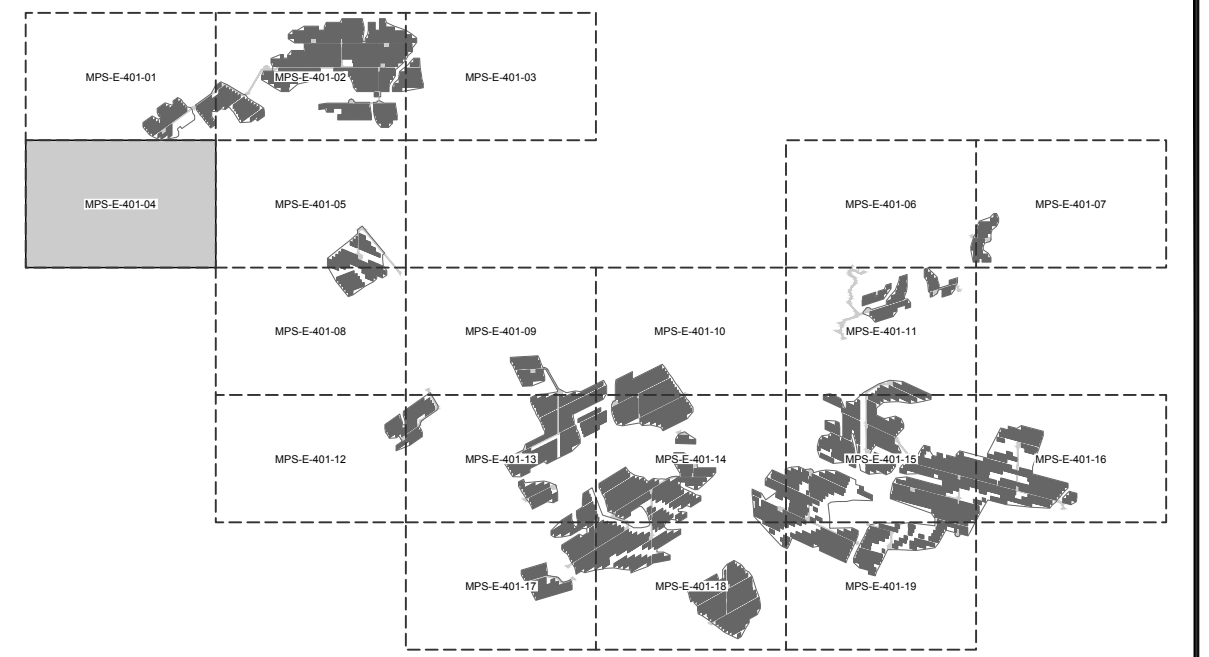
DATE: 01-12-2024  
LIC. EXP.: 09-30-2026

01/15/24  
DATE  
AS NOTED  
SCALE





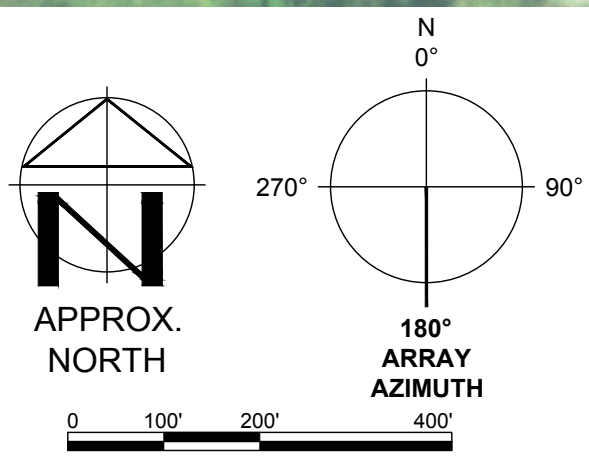
KEY PLAN



LEGEND

- WETLAND (USACE)
- WETLAND (NYDEC)
- WETLAND (ISOLATED)
- SURFACE WATER (USACE)
- SURFACE WATER (NYDEC)
- PANEL EXCLUSION AREA (PEA)
- SINGLE AXIS TRACKER
- INVERTER
- MV ROUTING
- UTILITY EASEMENT
- OHU OVERHEAD UTILITY
- BORE PIT
- FENCE

PRELIMINARY  
NOT FOR CONSTRUCTION



**TRC** 670 NORTH COMMERCIAL STREET SUITE 203  
MANCHESTER, NH 03101

PROJECT NO: 443269

REFERENCE ITEMS	REV	DESCRIPTION	DATE	DES	CHK	APP
	C	ISSUED FOR 94-C	01/15/24	JAK	JTG	DVL
	B	ISSUED FOR REVIEW	09/01/23	JAK	JTG	DVL
	A	ISSUED FOR REVIEW	08/11/23	JAK	JTG	DVL



JAK DESIGNED
JAK DRAWN
JTG CHECKED
DVL APPROVED
REVIEW 1
REVIEW 2

MILL POINT SOLAR I PROJECT  
CONNECTGEN MONTGOMERY COUNTY LLC  
ARRAY PLAN 4

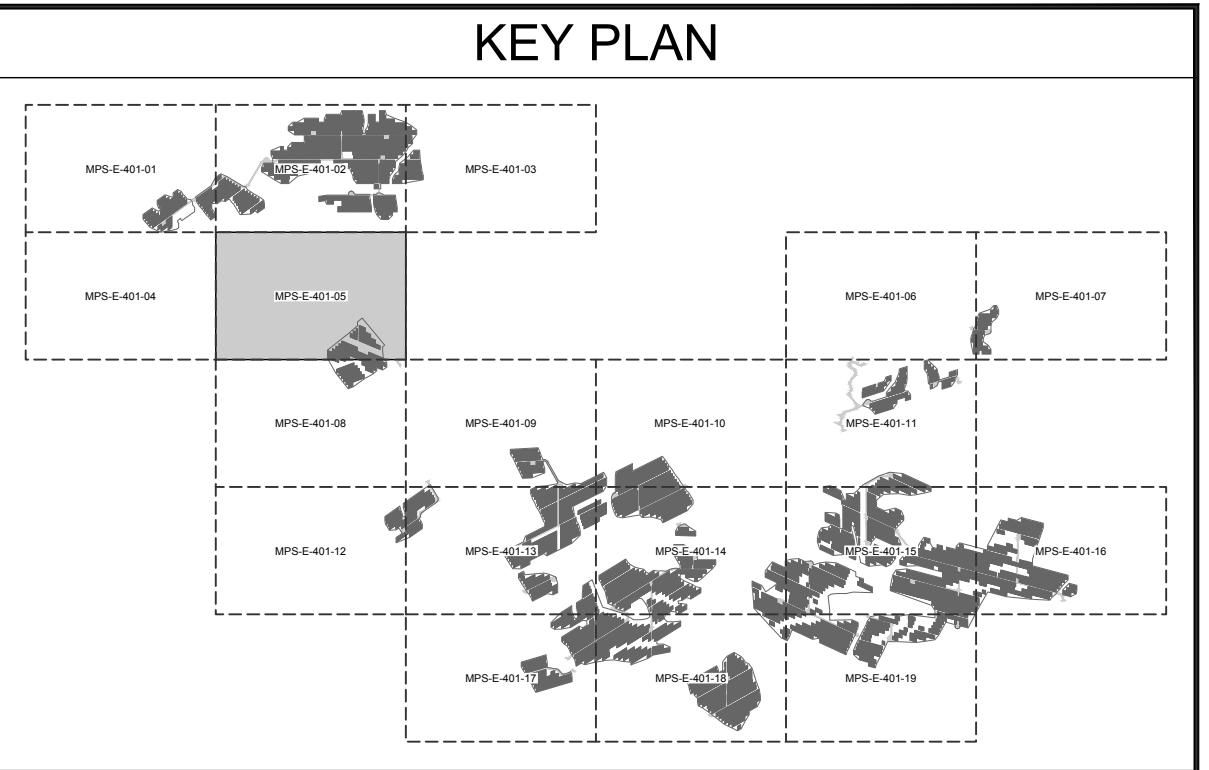
GLEN NEW YORK

DATE: 01/15/24  
SCALE: AS NOTED

**TRC** MPS-E-401-04

REV: C





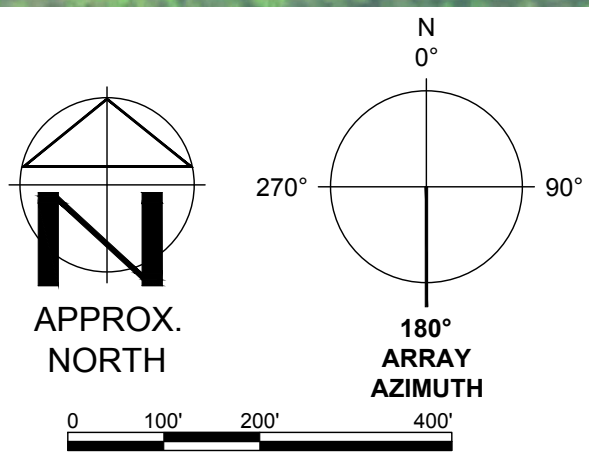
### LEGEND

	WETLAND (USACE)
	WETLAND (NYDEC)
	WETLAND (ISOLATED)
	SURFACE WATER (USACE)
	SURFACE WATER (NYDEC)
	PANEL EXCLUSION AREA (PEA)
	SINGLE AXIS TRACKER
	INVERTER
	MV ROUTING
	UTILITY EASEMENT
	OVERHEAD UTILITY
	BORE PIT
	FENCE

**NOTES:**

- NEW MV CIRCUITS CROSS CREEK AT AN ANGLE BECAUSE THEY HAVE TO CROSS TRANSMISSION EASEMENT PERPENDICULARLY.

**PRELIMINARY**  
NOT FOR CONSTRUCTION



**TRC** 670 NORTH COMMERCIAL STREET SUITE 203  
MANCHESTER, NH 03101

PROJECT NO: 443269

REFERENCE ITEMS	REV	DESCRIPTION	DATE	DES	CHK	APP
	C	ISSUED FOR 94-C	01/15/24	JAK	JTG	DVL
	B	ISSUED FOR REVIEW	09/01/23	JAK	JTG	DVL
	A	ISSUED FOR REVIEW	08/11/23	JAK	JTG	DVL



JAK DESIGNED
JAK DRAWN
JTG CHECKED
DVL APPROVED
REVIEW 1
REVIEW 2

MILL POINT SOLAR I PROJECT  
CONNECTGEN MONTGOMERY COUNTY LLC  
ARRAY PLAN 5

GLEN	NEW YORK
01/15/24 DATE	MPS-E-401-05
AS NOTED SCALE	REV: C



DATE: 01-12-2024  
LIC. EXP.: 09-30-2026