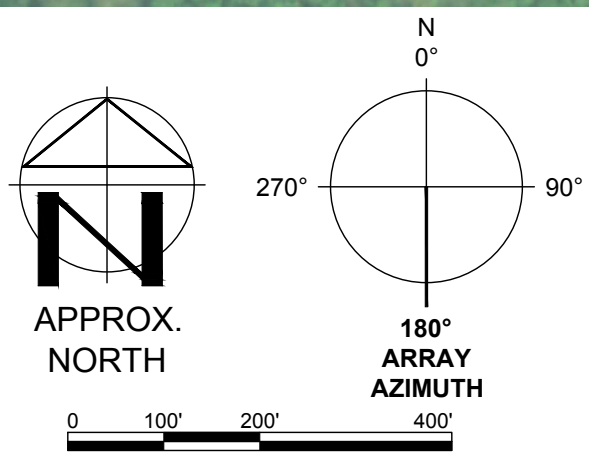


LEGEND

	WETLAND (USACE)
	WETLAND (NYDEC)
	WETLAND (ISOLATED)
	SURFACE WATER (USACE)
	SURFACE WATER (NYDEC)
	PANEL EXCLUSION AREA (PEA)
	SINGLE AXIS TRACKER
	INVERTER
	MV ROUTING
	UTILITY EASEMENT
	OVERHEAD UTILITY
	BORE PIT
	FENCE

PRELIMINARY
NOT FOR CONSTRUCTION



TRC 670 NORTH COMMERCIAL STREET SUITE 203
MANCHESTER, NH 03101

PROJECT NO: 443269

REFERENCE ITEMS	REV	DESCRIPTION	DATE	DES	CHK	APP
	C	ISSUED FOR 94-C	01/15/24	JAK	JTG	DVL
	B	ISSUED FOR REVIEW	09/01/23	JAK	JTG	DVL
	A	ISSUED FOR REVIEW	08/11/23	JAK	JTG	DVL



JAK DESIGNED
JAK DRAWN
JTG CHECKED
DVL APPROVED
REVIEW 1
REVIEW 2

MILL POINT SOLAR 1 PROJECT
CONNECTGEN MONTGOMERY COUNTY LLC
ARRAY PLAN 6

GLEN NEW YORK

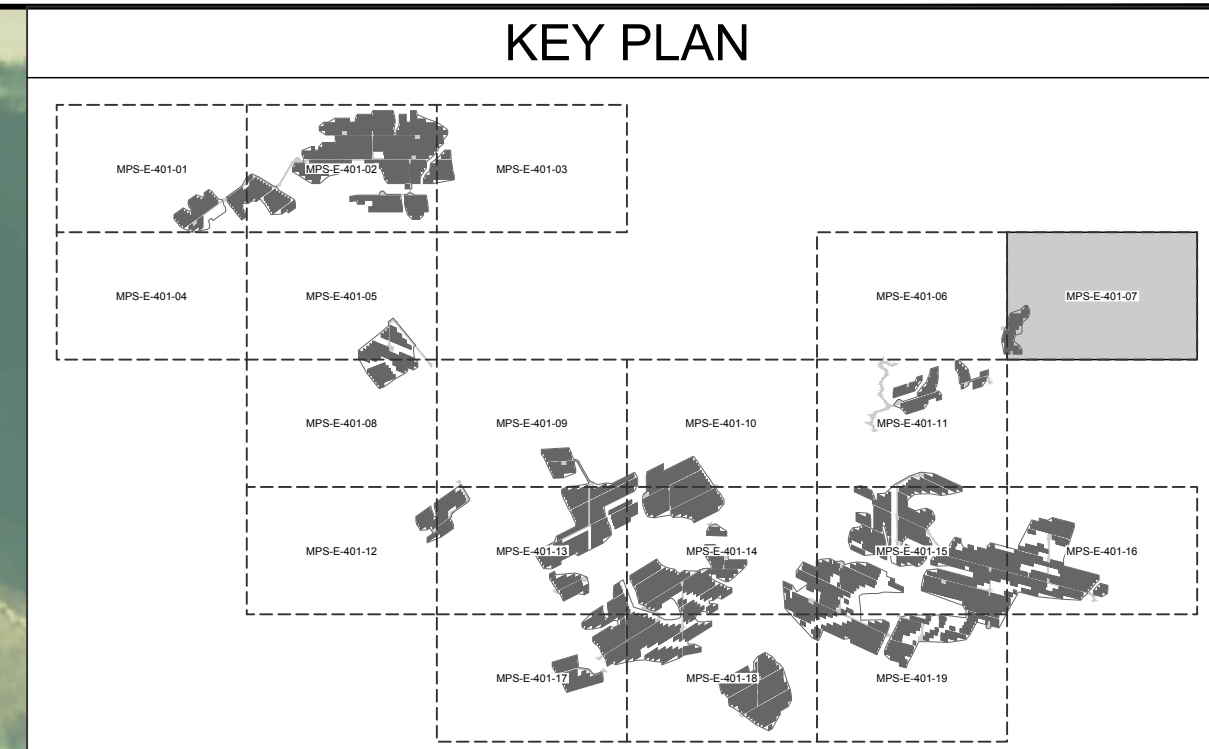
01/15/24
DATE
AS NOTED
SCALE



MPS-E-401-06

REV: C

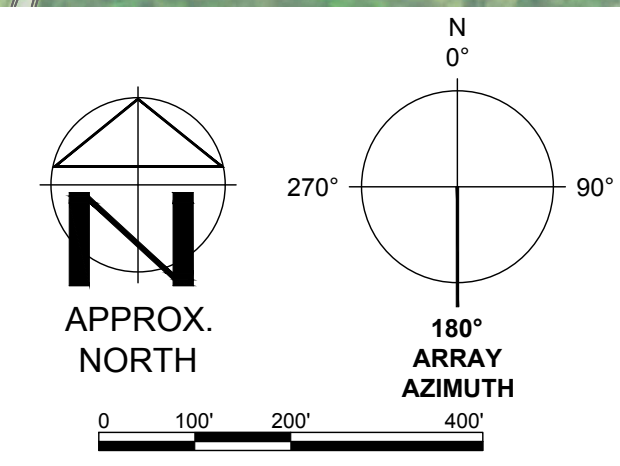
DATE: 01-12-2024
LIC. EXP.: 09-30-2026



LEGEND

	WETLAND (USACE)
	WETLAND (NYDEC)
	WETLAND (ISOLATED)
	SURFACE WATER (USACE)
	SURFACE WATER (NYDEC)
	PANEL EXCLUSION AREA (PEA)
	SINGLE AXIS TRACKER
	INVERTER
	MV ROUTING
	UTILITY EASEMENT
	OVERHEAD UTILITY
	BORE PIT
	FENCE

PRELIMINARY
 NOT FOR CONSTRUCTION



TRC 670 NORTH COMMERCIAL STREET SUITE 203
MANCHESTER, NH 03101

PROJECT NO: 443269

REV	DESCRIPTION	DATE	DES	CHK	APP
C	ISSUED FOR 94-C	01/15/24	JAK	JTG	DVL
B	ISSUED FOR REVIEW	09/01/23	JAK	JTG	DVL
A	ISSUED FOR REVIEW	08/11/23	JAK	JTG	DVL

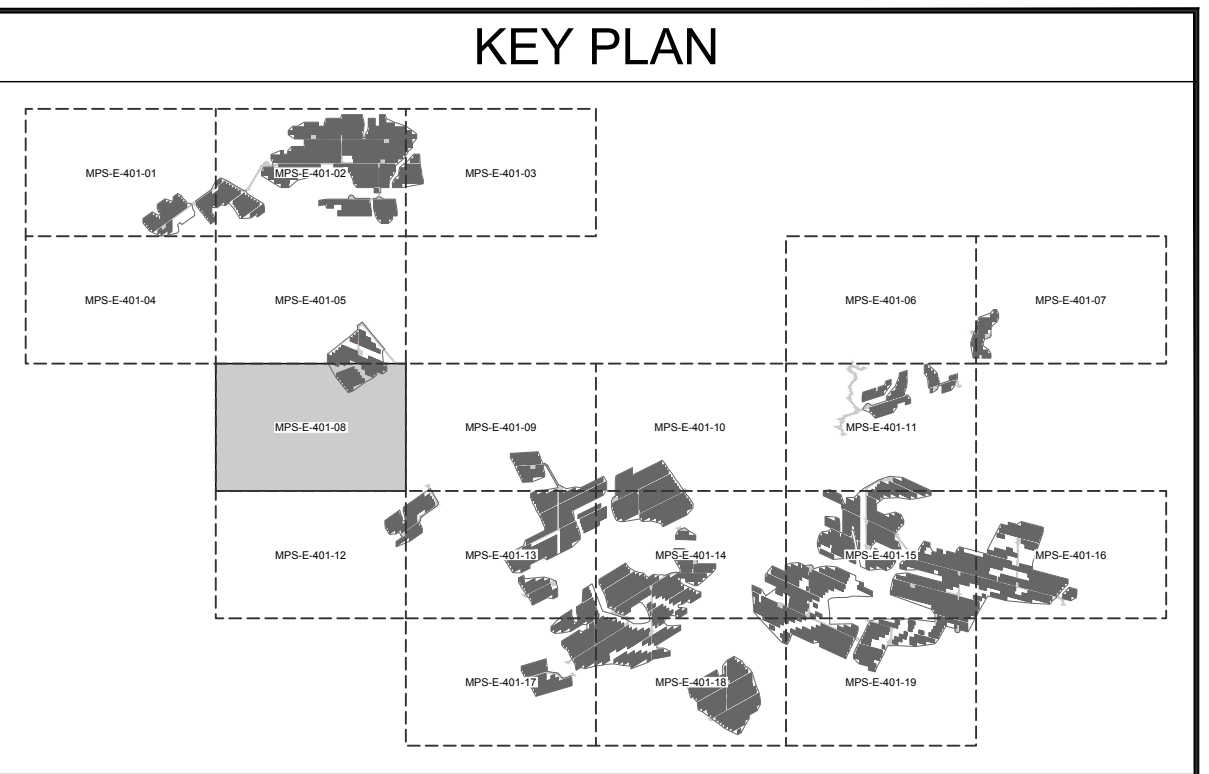


JAK DESIGNED
JAK DRAWN
JTG CHECKED
DVL APPROVED
REVIEW 1
REVIEW 2

MILL POINT SOLAR I PROJECT
CONNECTGEN MONTGOMERY COUNTY LLC
ARRAY PLAN 7

GLEN	NEW YORK
01/15/24 DATE	MPS-E-401-07
AS NOTED SCALE	REV: C

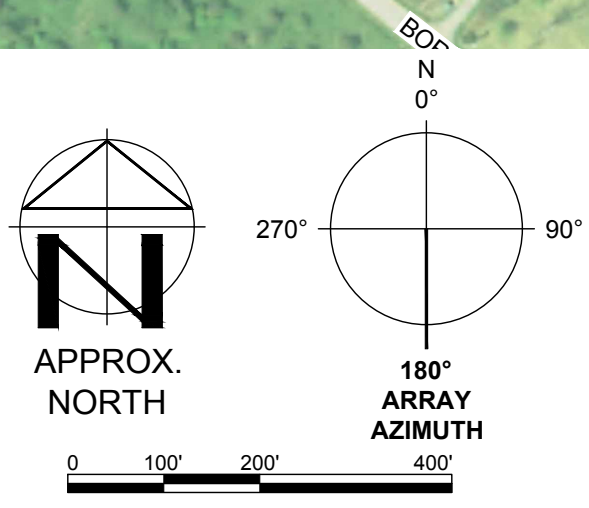




LEGEND

	WETLAND (USACE)
	WETLAND (NYDEC)
	WETLAND (ISOLATED)
	SURFACE WATER (USACE)
	SURFACE WATER (NYDEC)
	PANEL EXCLUSION AREA (PEA)
	SINGLE AXIS TRACKER
	INVERTER
	MV ROUTING
	UTILITY EASEMENT
	OVERHEAD UTILITY
	BORE PIT
	FENCE

PRELIMINARY
NOT FOR CONSTRUCTION



TRC 670 NORTH COMMERCIAL STREET SUITE 203
MANCHESTER, NH 03101

PROJECT NO: 443269

REFERENCE ITEMS	REV	DESCRIPTION	DATE	DES	CHK	APP
	C	ISSUED FOR 94-C	01/15/24	JAK	JTG	DVL
	B	ISSUED FOR REVIEW	09/01/23	JAK	JTG	DVL
	A	ISSUED FOR REVIEW	08/11/23	JAK	JTG	DVL



JAK DESIGNED
JAK DRAWN
JTG CHECKED
DVL APPROVED
REVIEW 1
REVIEW 2

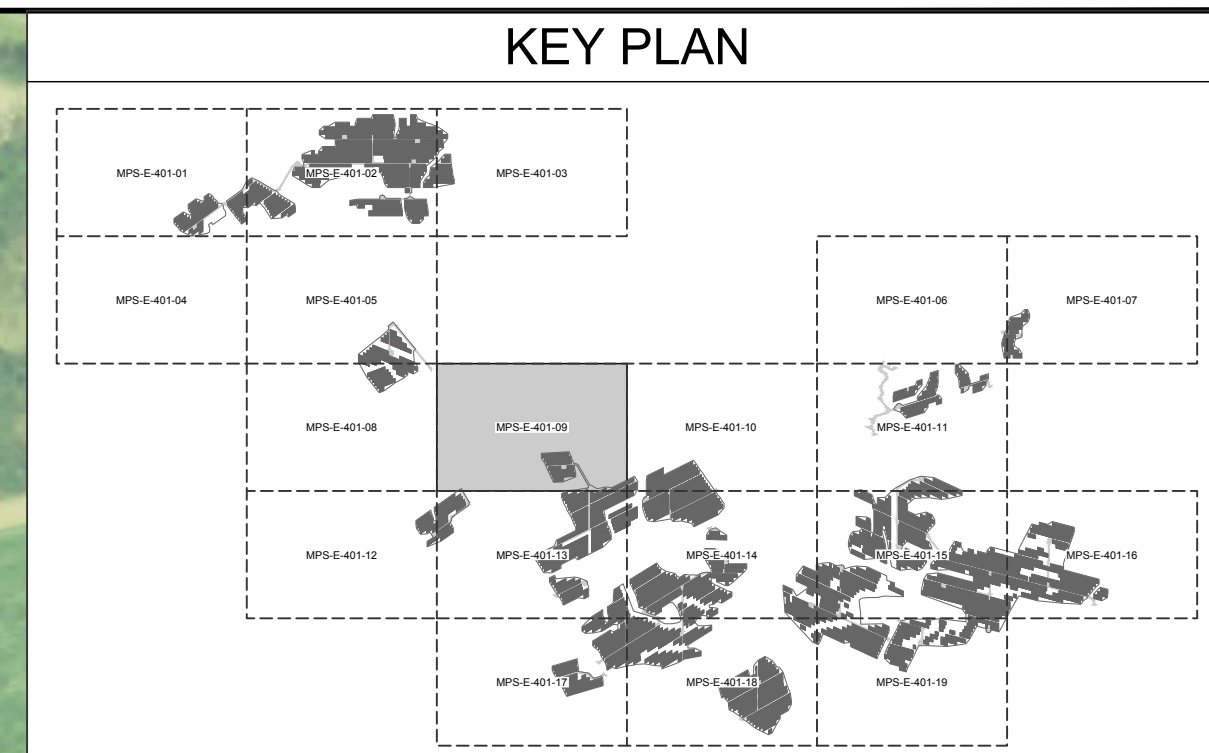
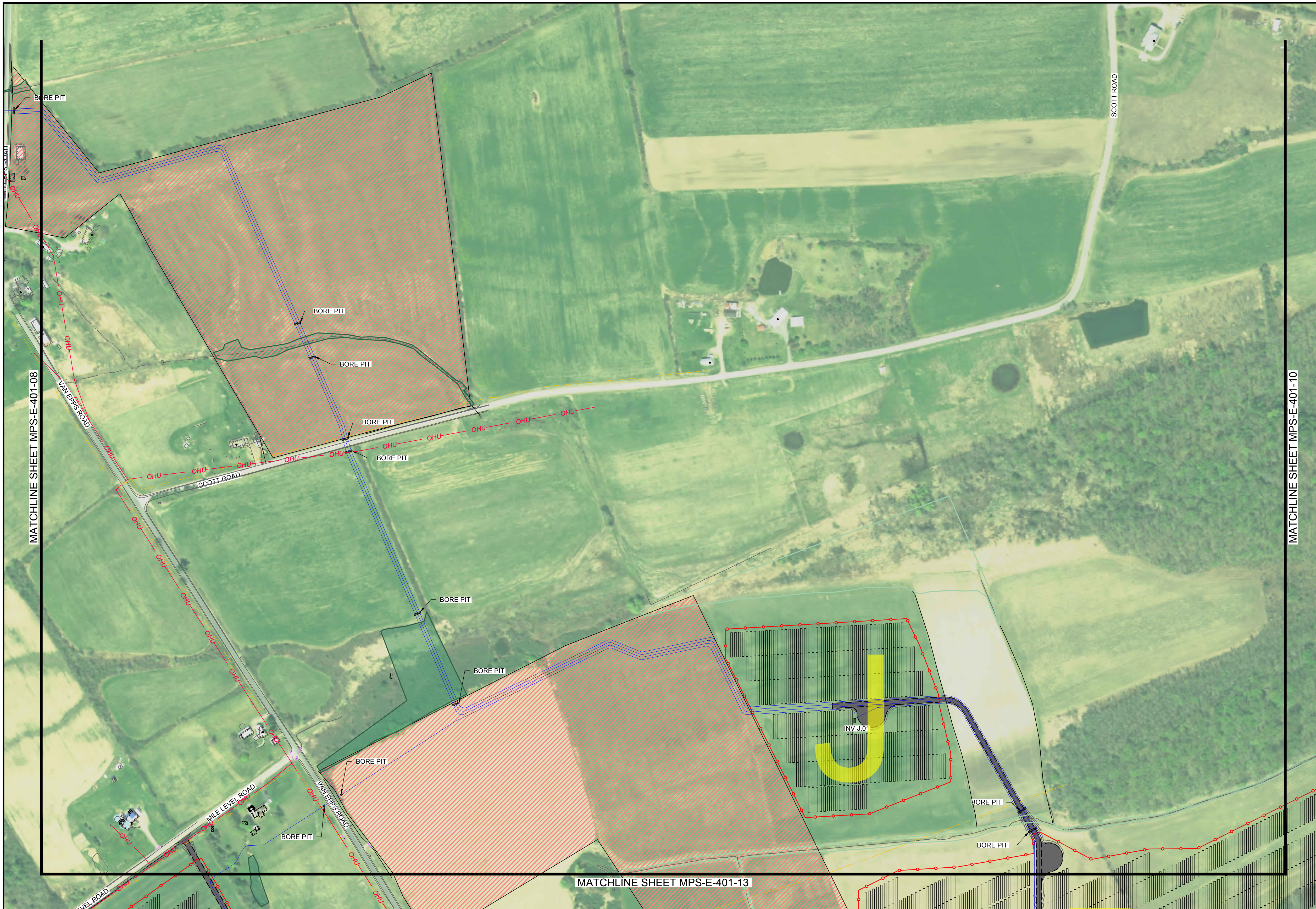
MILL POINT SOLAR I PROJECT
CONNECTGEN MONTGOMERY COUNTY LLC
ARRAY PLAN 8

GLEN NEW YORK

DATE: 01/15/24
SCALE: AS NOTED

TRC MPS-E-401-08

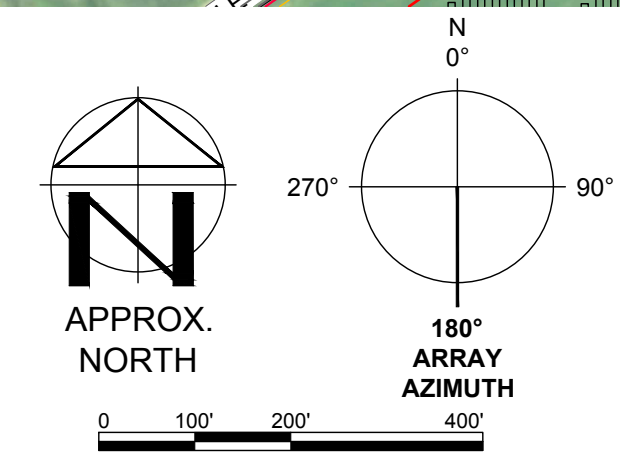
REV: C



LEGEND

	WETLAND (USACE)
	WETLAND (NYDEC)
	WETLAND (ISOLATED)
	SURFACE WATER (USACE)
	SURFACE WATER (NYDEC)
	PANEL EXCLUSION AREA (PEA)
	SINGLE AXIS TRACKER
	INVERTER
	MV ROUTING
	UTILITY EASEMENT
	OVERHEAD UTILITY
	BORE PIT
	FENCE

PRELIMINARY
NOT FOR CONSTRUCTION



TRC 670 NORTH COMMERCIAL STREET SUITE 203
MANCHESTER, NH 03101

PROJECT NO: 443269

REFERENCE ITEMS	REV	DESCRIPTION	DATE	DES	CHK	APP
	C	ISSUED FOR 94-C	01/15/24	JAK	JTG	DVL
	B	ISSUED FOR REVIEW	09/01/23	JAK	JTG	DVL
	A	ISSUED FOR REVIEW	08/11/23	JAK	JTG	DVL



JAK DESIGNED
JAK DRAWN
JTG CHECKED
DVL APPROVED
REVIEW 1
REVIEW 2

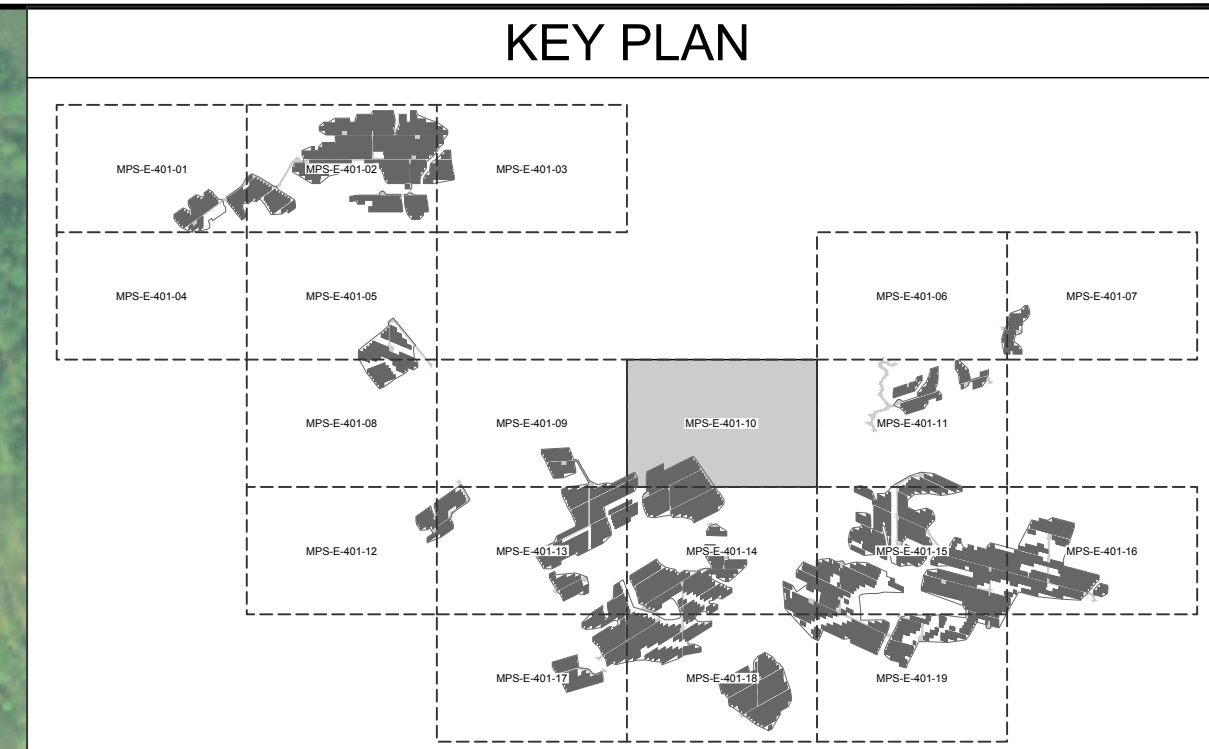
MILL POINT SOLAR I PROJECT
CONNECTGEN MONTGOMERY COUNTY LLC
ARRAY PLAN 9

GLEN NEW YORK

01/15/24
DATE AS NOTED
SCALE

TRC MPS-E-401-09

REV: C



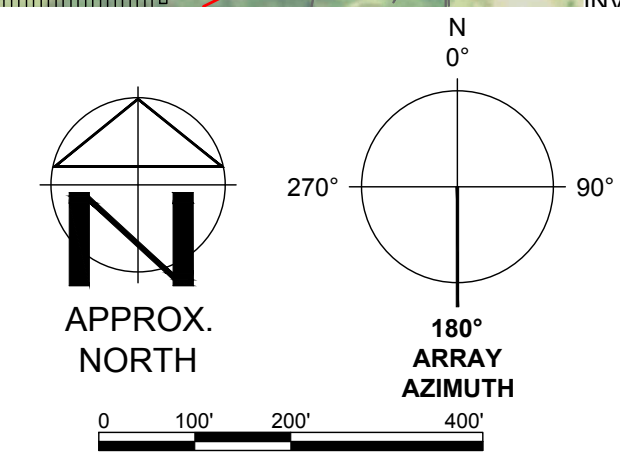
LEGEND

	WETLAND (USACE)
	WETLAND (NYDEC)
	WETLAND (ISOLATED)
	SURFACE WATER (USACE)
	SURFACE WATER (NYDEC)
	PANEL EXCLUSION AREA (PEA)
	SINGLE AXIS TRACKER
	INVERTER
	MV ROUTING
	UTILITY EASEMENT
	OVERHEAD UTILITY
	BORE PIT
	FENCE

NOTES:

1. NEW MV CIRCUITS CROSS CREEK AT AN ANGLE BECAUSE THEY HAVE TO CROSS TRANSMISSION EASEMENT PERPENDICULARLY.

PRELIMINARY
NOT FOR CONSTRUCTION



TRC 670 NORTH COMMERCIAL STREET SUITE 203
MANCHESTER, NH 03101

PROJECT NO: 443269

REFERENCE ITEMS	REV	DESCRIPTION	DATE	DES	CHK	APP
	C	ISSUED FOR 94-C	01/15/24	JAK	JTG	DVL
	B	ISSUED FOR REVIEW	09/01/23	JAK	JTG	DVL
	A	ISSUED FOR REVIEW	08/11/23	JAK	JTG	DVL



JAK DESIGNED
JAK DRAWN
JTG CHECKED
DVL APPROVED
REVIEW 1
REVIEW 2

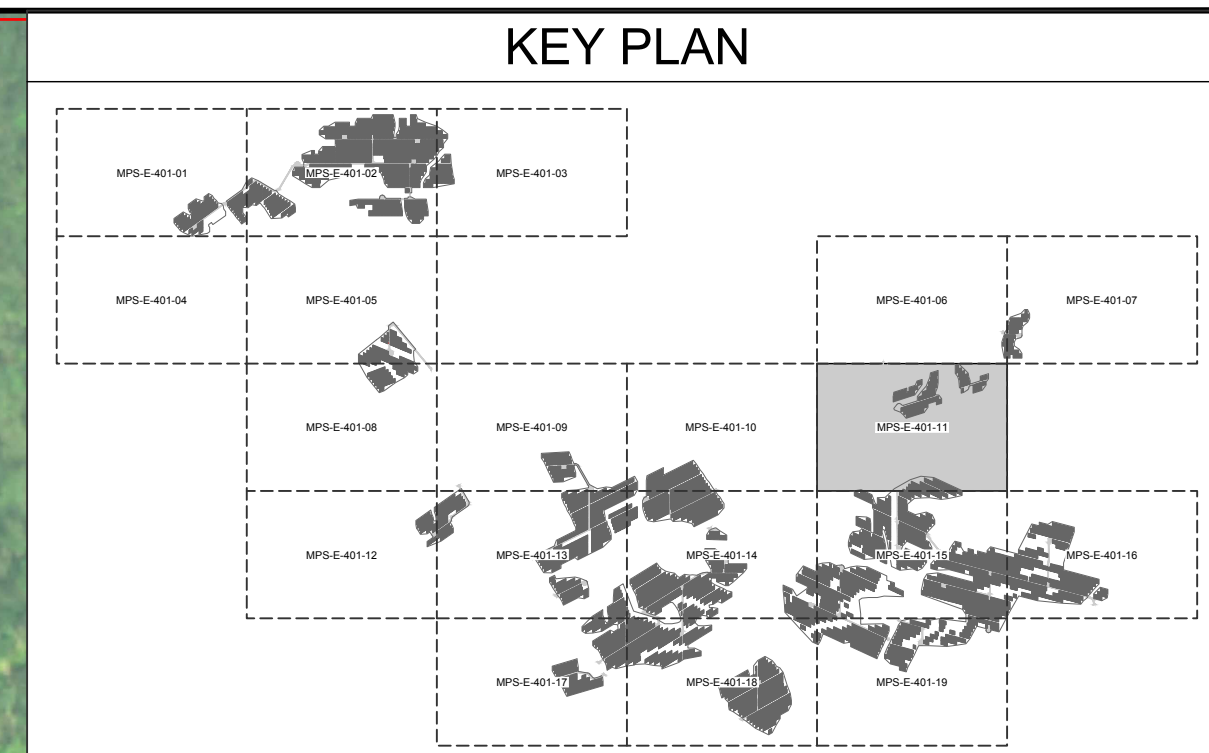
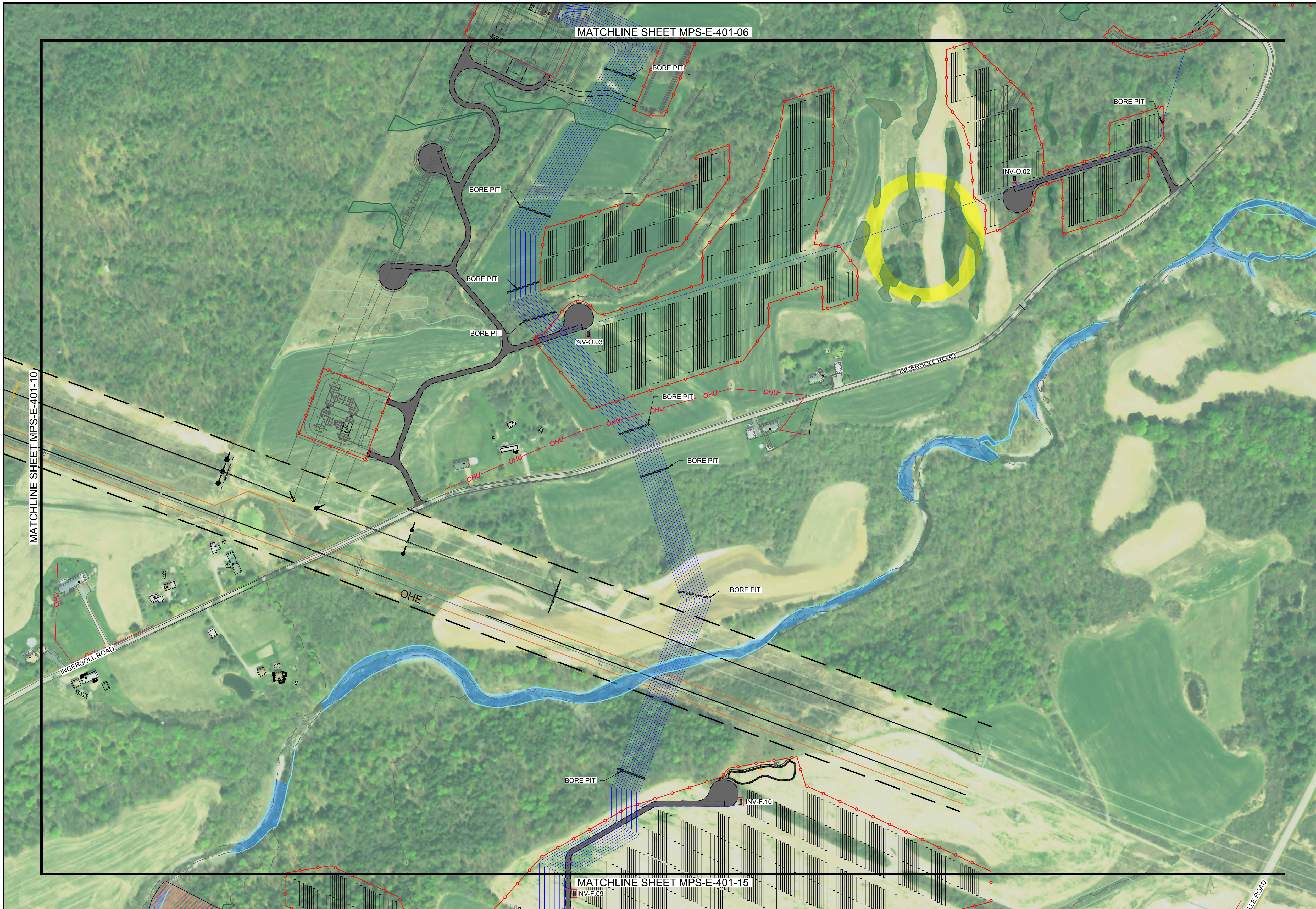
MILL POINT SOLAR I PROJECT
CONNECTGEN MONTGOMERY COUNTY LLC
ARRAY PLAN 10

GLEN NEW YORK



MPS-E-401-10

REV: C

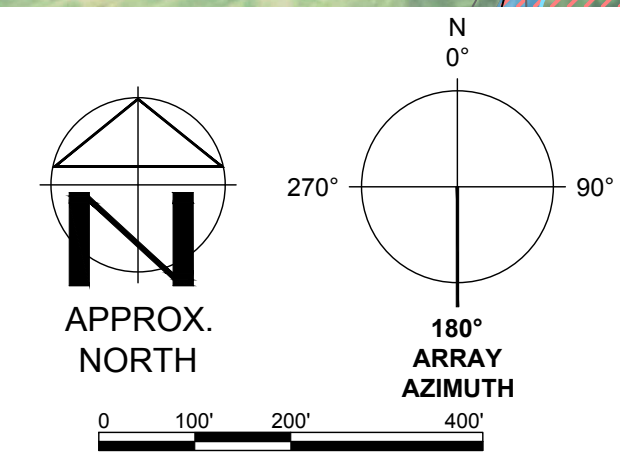


LEGEND

	WETLAND (USACE)
	WETLAND (NYDEC)
	WETLAND (ISOLATED)
	SURFACE WATER (USACE)
	SURFACE WATER (NYDEC)
	PANEL EXCLUSION AREA (PEA)
	SINGLE AXIS TRACKER
	INVERTER
	MV ROUTING
	UTILITY EASEMENT
	OVERHEAD UTILITY
	BORE PIT
	FENCE

NOTES:
 1. NEW MV CIRCUITS CROSS CREEK AT AN ANGLE BECAUSE THEY HAVE TO CROSS TRANSMISSION EASEMENT PERPENDICULARLY.

PRELIMINARY
 NOT FOR CONSTRUCTION



TRC 670 NORTH COMMERCIAL STREET SUITE 203
 MANCHESTER, NH 03101

PROJECT NO: 443269

REFERENCE ITEMS	REV	DESCRIPTION	DATE	DES	CHK	APP
	C	ISSUED FOR 94-C	01/15/24	JAK	JTG	DVL
	B	ISSUED FOR REVIEW	09/01/23	JAK	JTG	DVL
	A	ISSUED FOR REVIEW	08/11/23	JAK	JTG	DVL



JAK DESIGNED	
JAK DRAWN	
JTG CHECKED	
DVL APPROVED	
REVIEW 1	01/15/24
REVIEW 2	AS NOTED

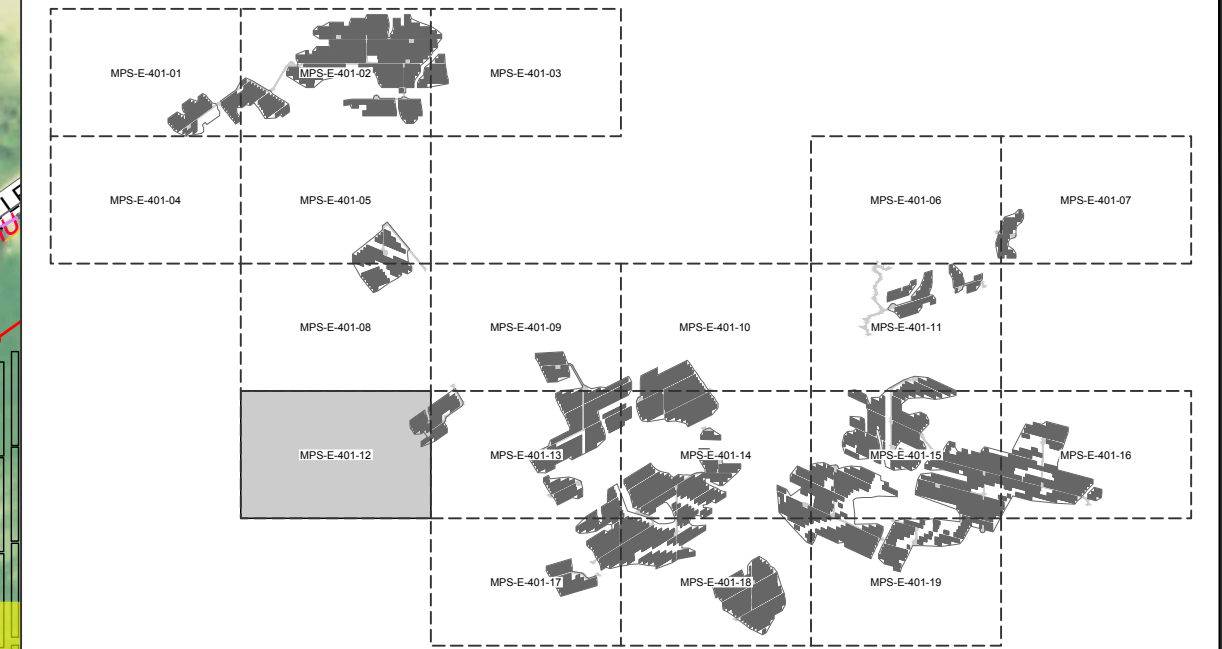
MILL POINT SOLAR I PROJECT
 CONNECTGEN MONTGOMERY COUNTY LLC
 ARRAY PLAN 11

GLEN NEW YORK

TRC MPS-E-401-11

MATCHLINE SHEET MPS-E-401-08

KEY PLAN



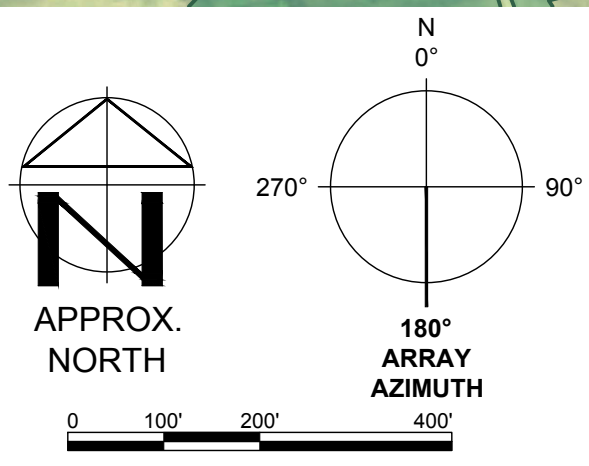
LEGEND

- WETLAND (USACE)
- WETLAND (NYDEC)
- WETLAND (ISOLATED)
- SURFACE WATER (USACE)
- SURFACE WATER (NYDEC)
- PANEL EXCLUSION AREA (PEA)
- SINGLE AXIS TRACKER
- INVERTER
- MV ROUTING
- UTILITY EASEMENT
- OHU
- BORE PIT
- FENCE



MATCHLINE SHEET MPS-E-401-13

PRELIMINARY
NOT FOR CONSTRUCTION



TRC 670 NORTH COMMERCIAL STREET SUITE 203
MANCHESTER, NH 03101

PROJECT NO: 443269

REFERENCE ITEMS	REV	DESCRIPTION	DATE	DES	CHK	APP
	C	ISSUED FOR 94-C	01/15/24	JAK	JTG	DVL
	B	ISSUED FOR REVIEW	09/01/23	JAK	JTG	DVL
	A	ISSUED FOR REVIEW	08/11/23	JAK	JTG	DVL



JAK DESIGNED
JAK DRAWN
JTG CHECKED
DVL APPROVED
REVIEW 1
REVIEW 2

MILL POINT SOLAR I PROJECT
CONNECTGEN MONTGOMERY COUNTY LLC
ARRAY PLAN 12

GLEN NEW YORK

TRC MPS-E-401-12

REV: C