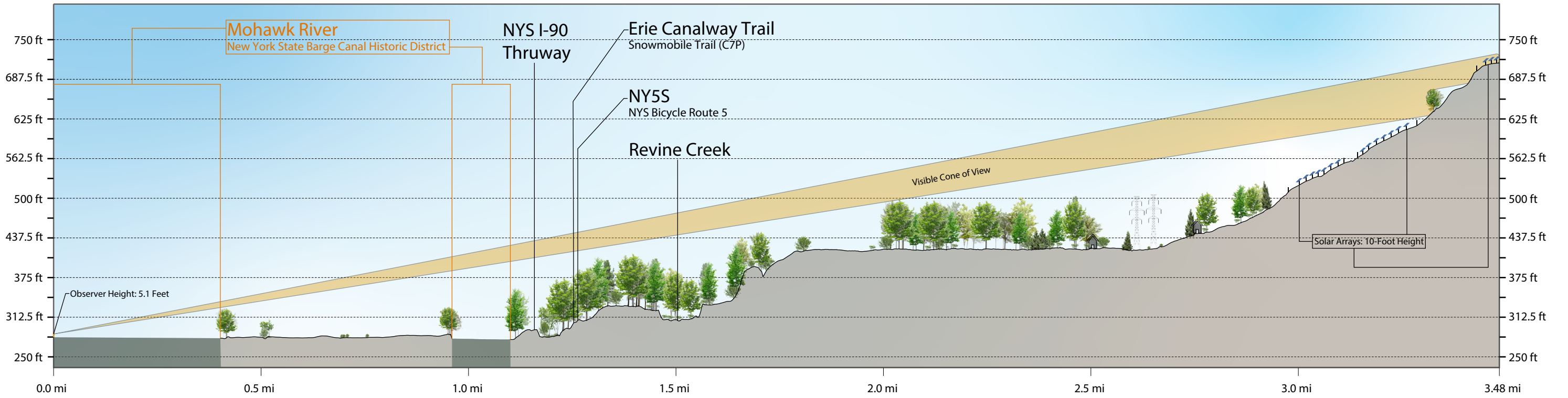
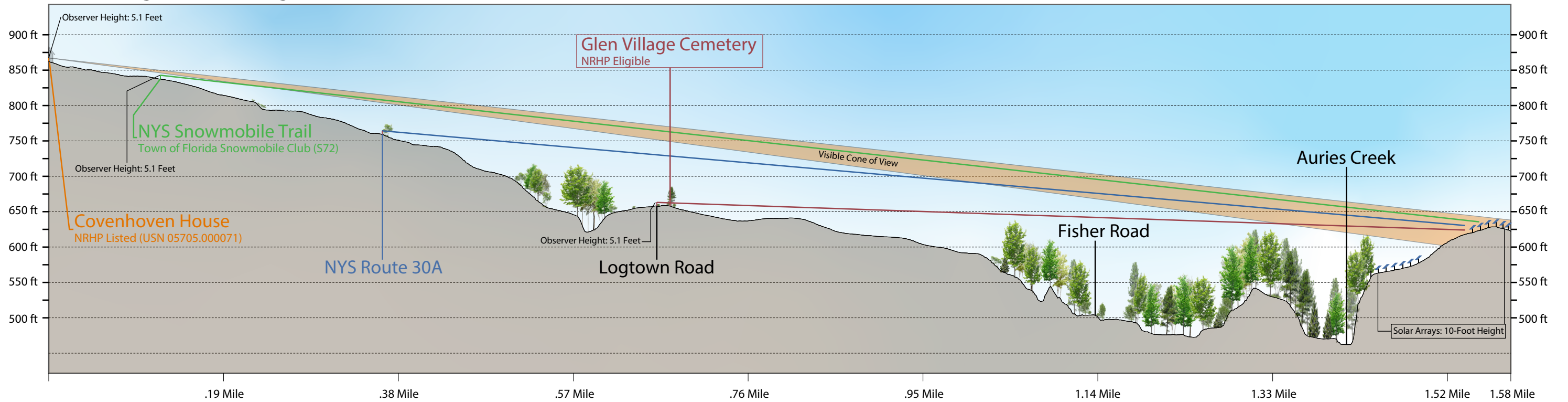


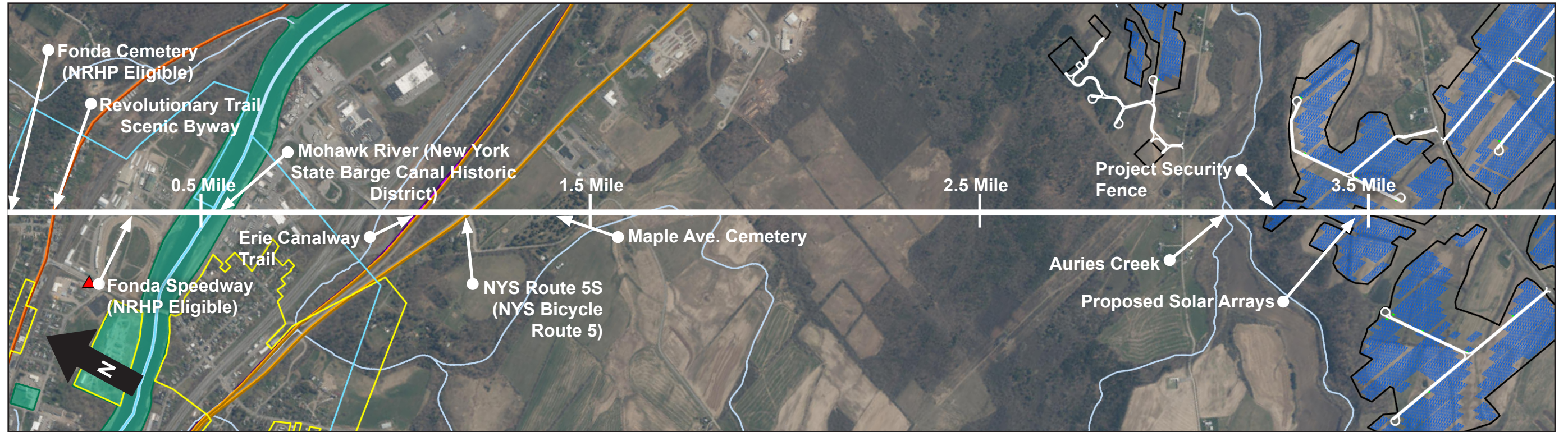
Line of Sight L1 - Facing Southwest



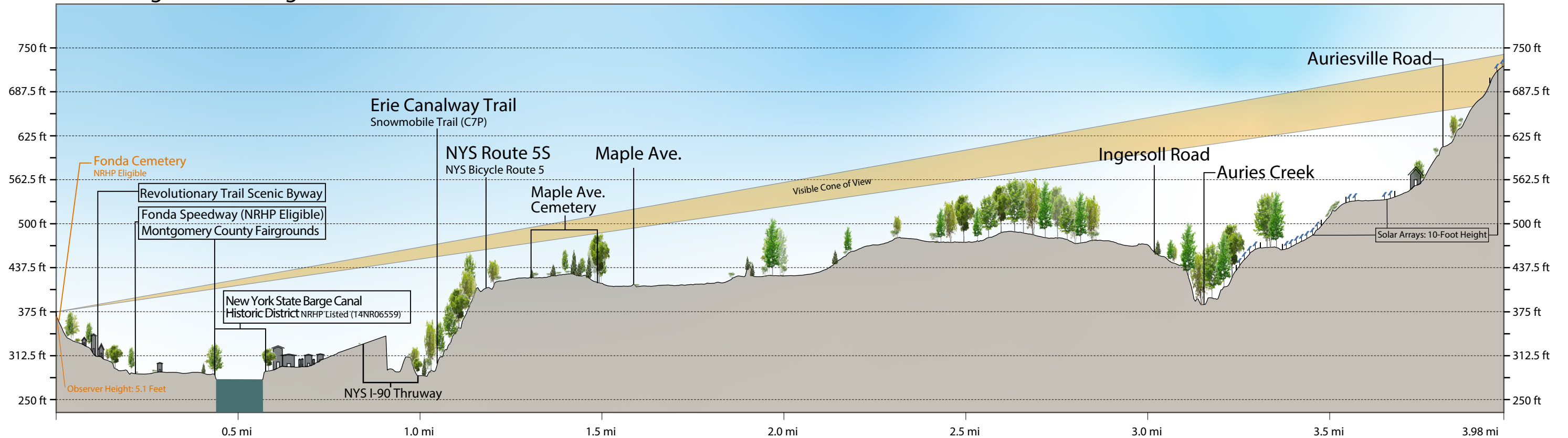


Line of Sight L2 - Facing Northwest





Line of Sight L3 - Facing Southeast



## Existing Conditions

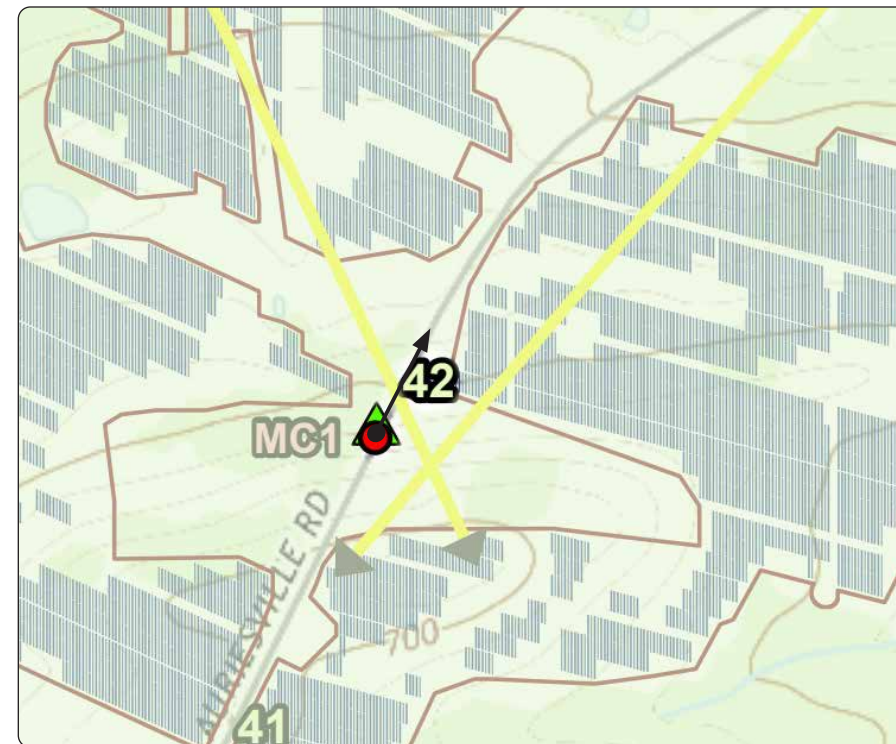


NE

Viewpoint Location Aerial Map



Viewpoint Location Topographic Map



Viewpoint Coordinates	42.90648 -74.33629
Town	Glen
Viewpoint Elevation (MSL)	632
Distance to Fence Line	25 feet
Direction of View	Northeast
Lens Focal Length	50mm (35mm Equivalent)
Date/Time of Photograph	4/8/2021, 2:02 PM











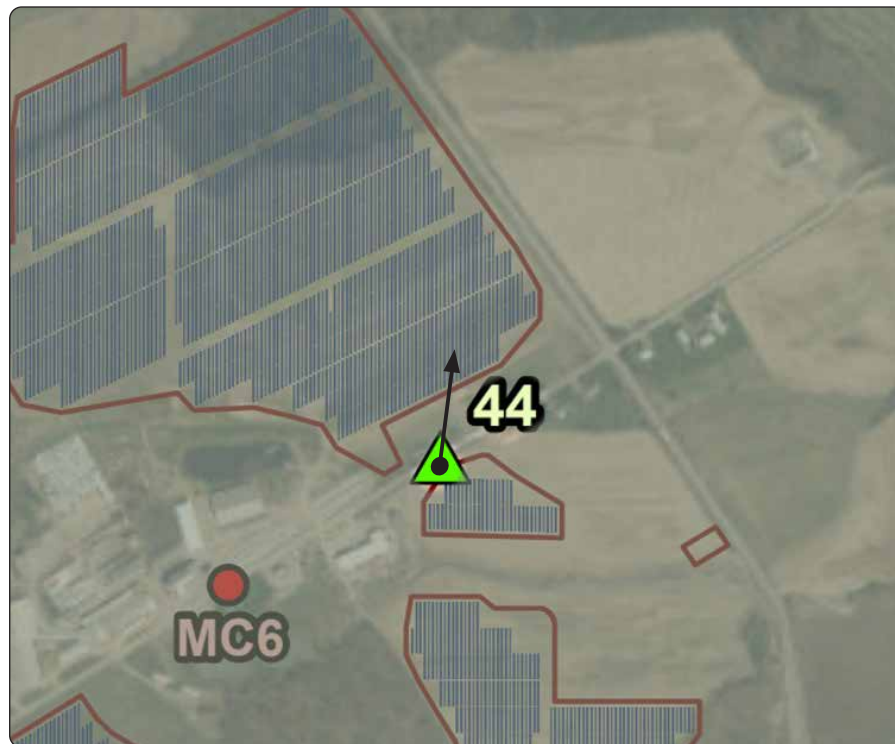


## Existing Conditions

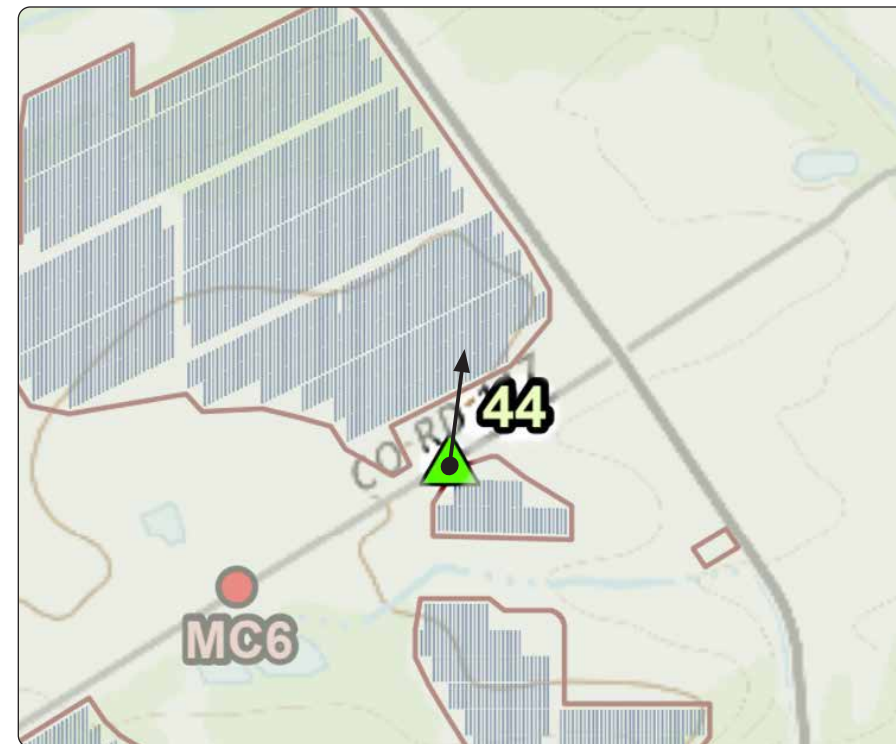


NNE

### Viewpoint Location Aerial Map



### Viewpoint Location Topographic Map



Viewpoint Coordinates	42.91191 -74.35502
Town	Glen
Viewpoint Elevation (MSL)	493
Distance to Fence Line	290 feet
Direction of View	North Northeast
Lens Focal Length	50mm (35mm Equivalent)
Date/Time of Photograph	4/8/2021, 2:13 PM



