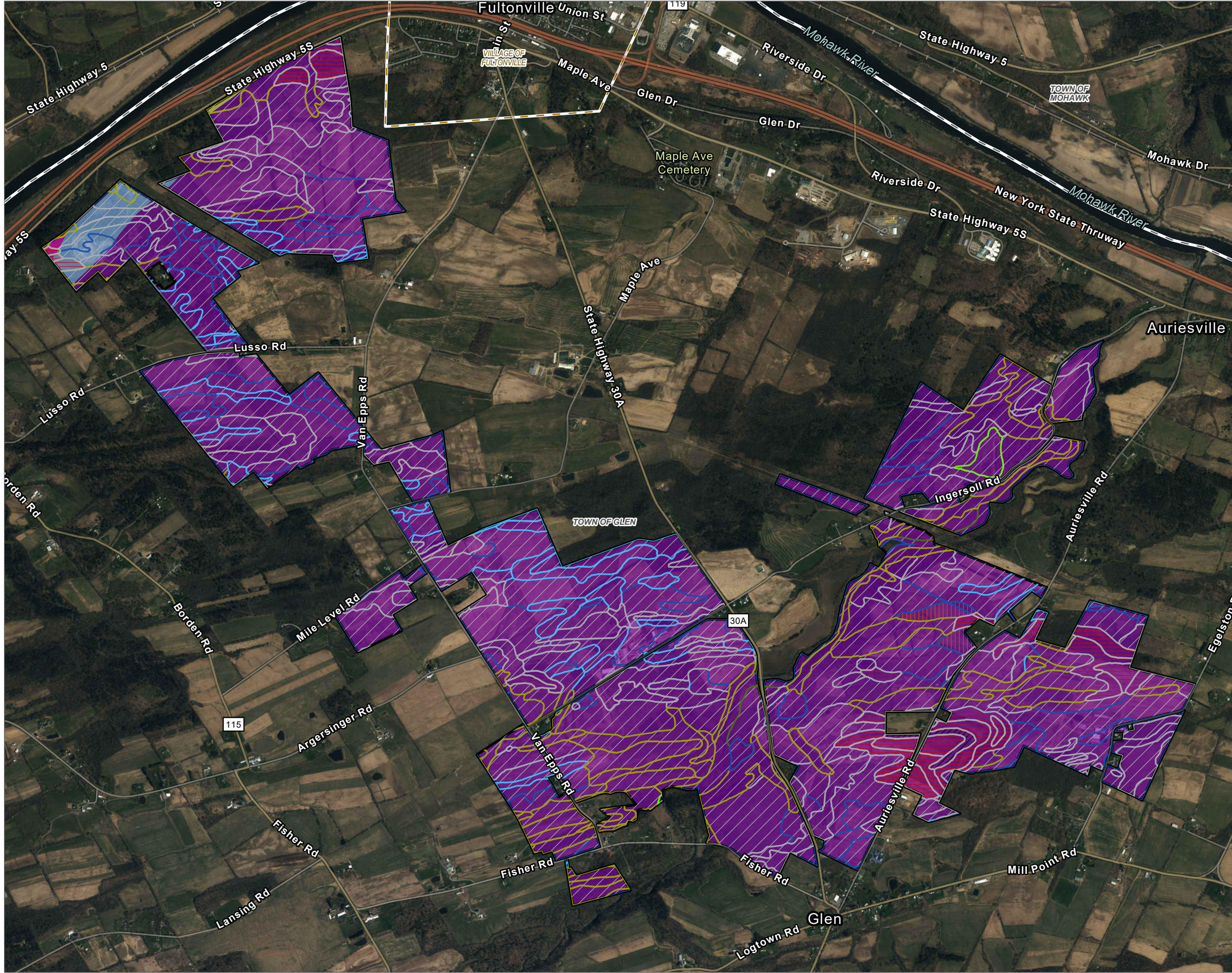


Coordinate System: NAD 1983 StatePlane New York East FIPS 3101 Feet; Map Rotation: 0  
 - Saved By: AKAILAS on 11/30/2023, 11:47:12 AM; File Path: \\employees\gis\arcgispro\1-PRO\PROJECTS\ConnectGen\11360\Mill\_Point\_Solen2-APPX\Mill\_Point\_94C\_Exhibit10.aprx; Layout Name: MillPoint\_Ext0\_Fig4\_BedrockGeology



**FACILITY SITE**  
 [Black outline symbol]

**TOWN BOUNDARY**  
 [Dashed line symbol]

**VILLAGE BOUNDARY**  
 [Dashed line symbol]

**BEDROCK GEOLOGY**

- OBK - BEEKMANTOWN GROUP [Pink color swatch]
- OC - CANAJOHARIE SHALE [Purple color swatch]
- OTBR - DOLGEVILLE FORMATION [Light blue color swatch]
- Q - GLACIAL AND ALLUVIAL DEPOSITS [Yellow color swatch]

**DEPTH TO BEDROCK (IN)**

- 0 [Diagonal lines symbol]
- 24.02 [Vertical lines symbol]
- 27.95 [Horizontal lines symbol]
- UNKNOWN BEDROCK DEPTH [White with diagonal lines symbol]

**DEPTH TO SHALLOW GROUNDWATER (IN)**

- 0 [Light blue color swatch]
- 1 - 20 [Blue color swatch]
- 20 - 40 [Light green color swatch]
- 41 - 60 [Green color swatch]
- >60 [Yellow color swatch]
- UNKNOWN GROUNDWATER DEPTH [White with diagonal lines symbol]

BASE MAP: ESRI 'WORLD IMAGERY', 3/30/2022.  
 DATA SOURCES: ESRI, TRC, NYSGIS,  
 NYSM, HUDSON MOHAWK BEDROCK, N.D.  
 USDA NRCS SOILS

**NEW YORK OVERVIEW**

**SITE LOCATION**

Scale: 1:25,200  
 1" = 2,100'

0 1,050 2,100 FEET

PROJECT: <b>CONNECTGEN MONTGOMERY COUNTY LLC</b>	
MILL POINT SOLAR I	
TOWN OF GLEN, MONTGOMERY COUNTY, NY	
TITLE: <b>BEDROCK GEOLOGY</b>	
DRAWN BY: A. KAILAS	PROJ. NO.: 411360.1000.0000
CHECKED BY: T. LATHAM	<b>FIGURE 10-4</b>
APPROVED BY: T. KONDAK	
DATE: NOVEMBER 2023	
3 CORPORATE DRIVE SUITE 202 CLIFTON PARK, NY 12065 PHONE: 518.348.1190	
FILE:	Mill_Point_94C_Exhibit10.aprx