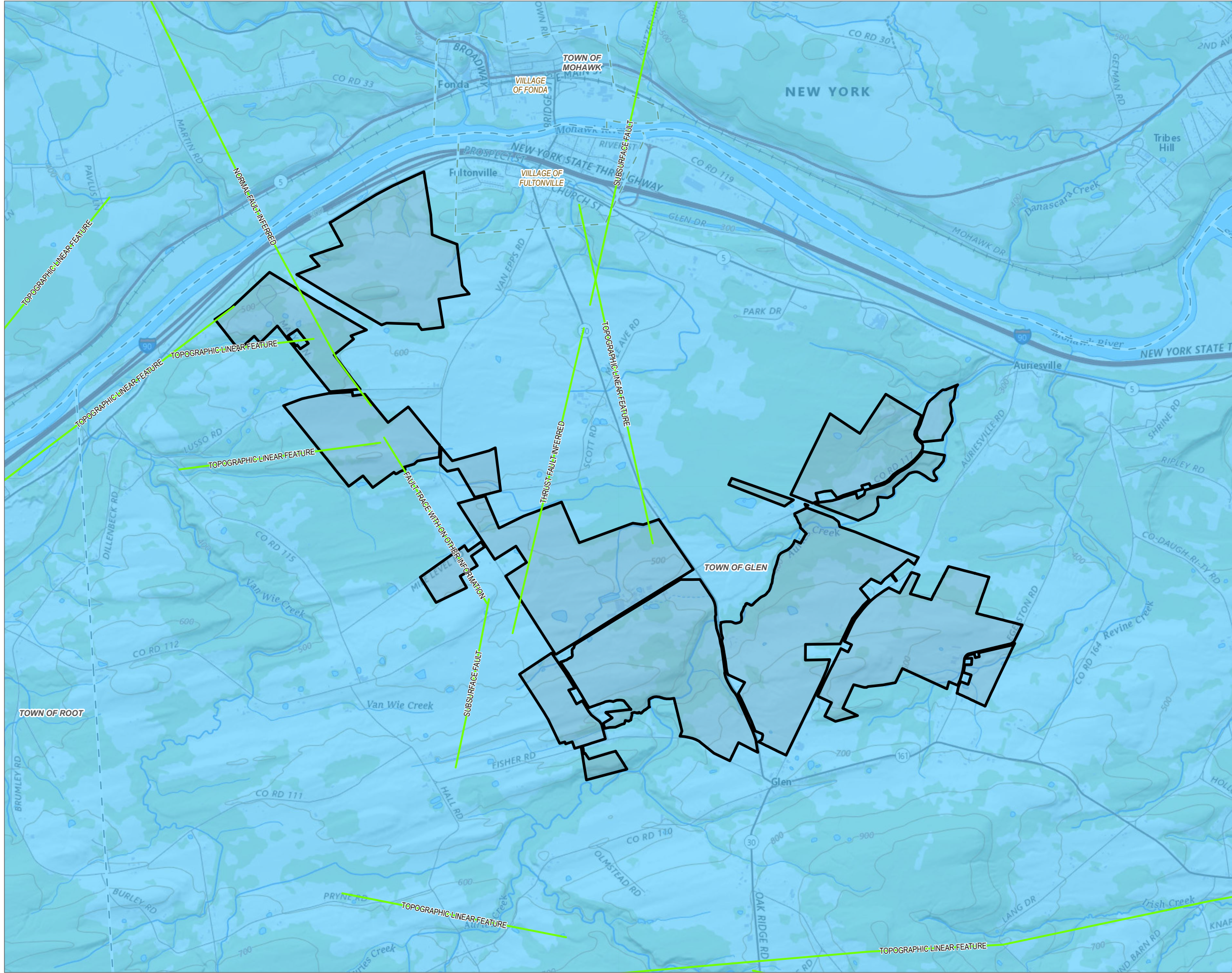


Coordinate System: NAD 1983 StatePlane New York East FIPS 3101 Feet; Map Rotation: 0
 - Saved By: AKALILAS on 11/20/2023, 11:47:12 AM; File Path: \\erp01\geospatial\proj\100\PROJECTS\ConnectGen\11360\Mill_Point_Solar\2-APP\Mill_Point_94C_Exhibit10.aprx; Layout Name: MillPoint_Ext10_Figs_SeismicHazards



LEGEND

- FACILITY SITE
- TOWN BOUNDARY
- VILLAGE BOUNDARY
- BRITTLE STRUCTURE

PEAK ACCELERATION, EXPRESSED AS A PERCENT OF STANDARD GRAVITY (G)

- 80
- 40
- 30
- 20
- 14
- 10
- 6
- 4
- 2
- 0

*QUATERNARY FAULTS ARE NOT PRESENT WITHIN THE PROJECT AREA.

BASE MAP: USGS TOPO NATIONAL BASEMAP
 DATA SOURCES: TRC, PROJECT AREA, 2023.
 NYSM, BRITTLE STRUCTURES, N.D.
 USGS.

NEW YORK OVERVIEW

SITE LOCATION

Scale: 1:36,000
 1" = 3,000'

0 1,500 3,000 FEET

| | |
|---|-------------------------------|
| PROJECT: CONNECTGEN MONTGOMERY COUNTY LLC | |
| MILL POINT SOLAR I | |
| TOWN OF GLEN, MONTGOMERY COUNTY, NY | |
| TITLE: SEISMIC HAZARDS | |
| DRAWN BY: A. KAILAS | PROJ. NO.: 411360.1000.0000 |
| CHECKED BY: T. LATHAM | FIGURE 10-5 |
| APPROVED BY: T. KONDAK | |
| DATE: NOVEMBER 2023 | |
| | |
| 3 CORPORATE DRIVE SUITE 202 CLIFTON PARK, NY 12065 PHONE: 518.348.1190 | |
| FILE: | Mill_Point_94C_Exhibit10.aprx |