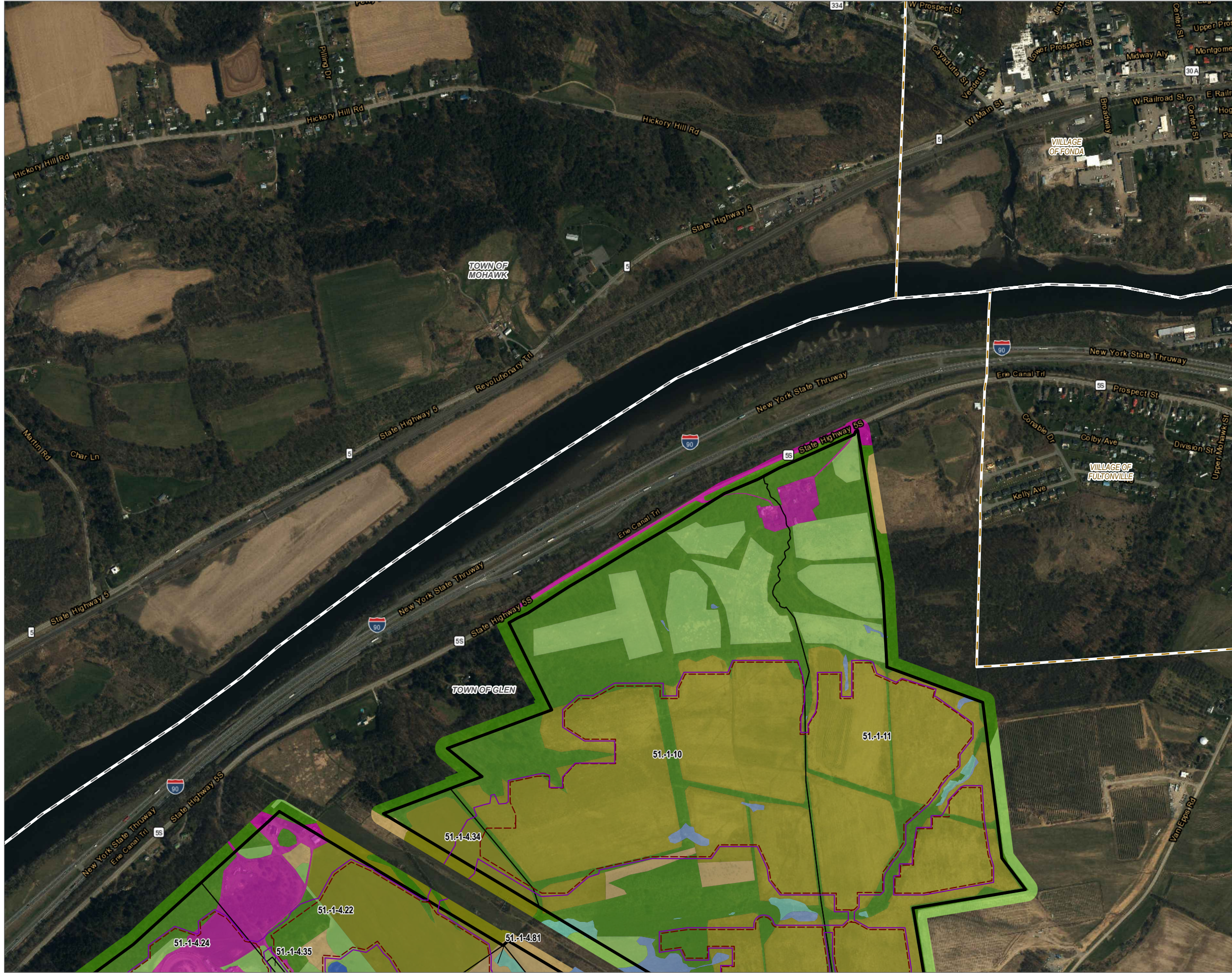
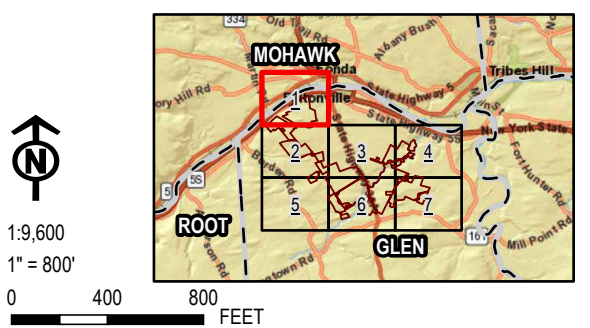


Coordinate System: NAD 1983 StatePlane New York East FIPS 3101 Feet; Map Rotation: 0
 Saved By: AKAILAS on 1/23/2024, 14:49:28 PM; File Path: T:\1-PROJECTS\CONNECTGEN\411360-Mill_Point_94C_Ext1.aprx; Layout Name: Mill_Point_Ext1_Fig1_Landcover_T1x17L



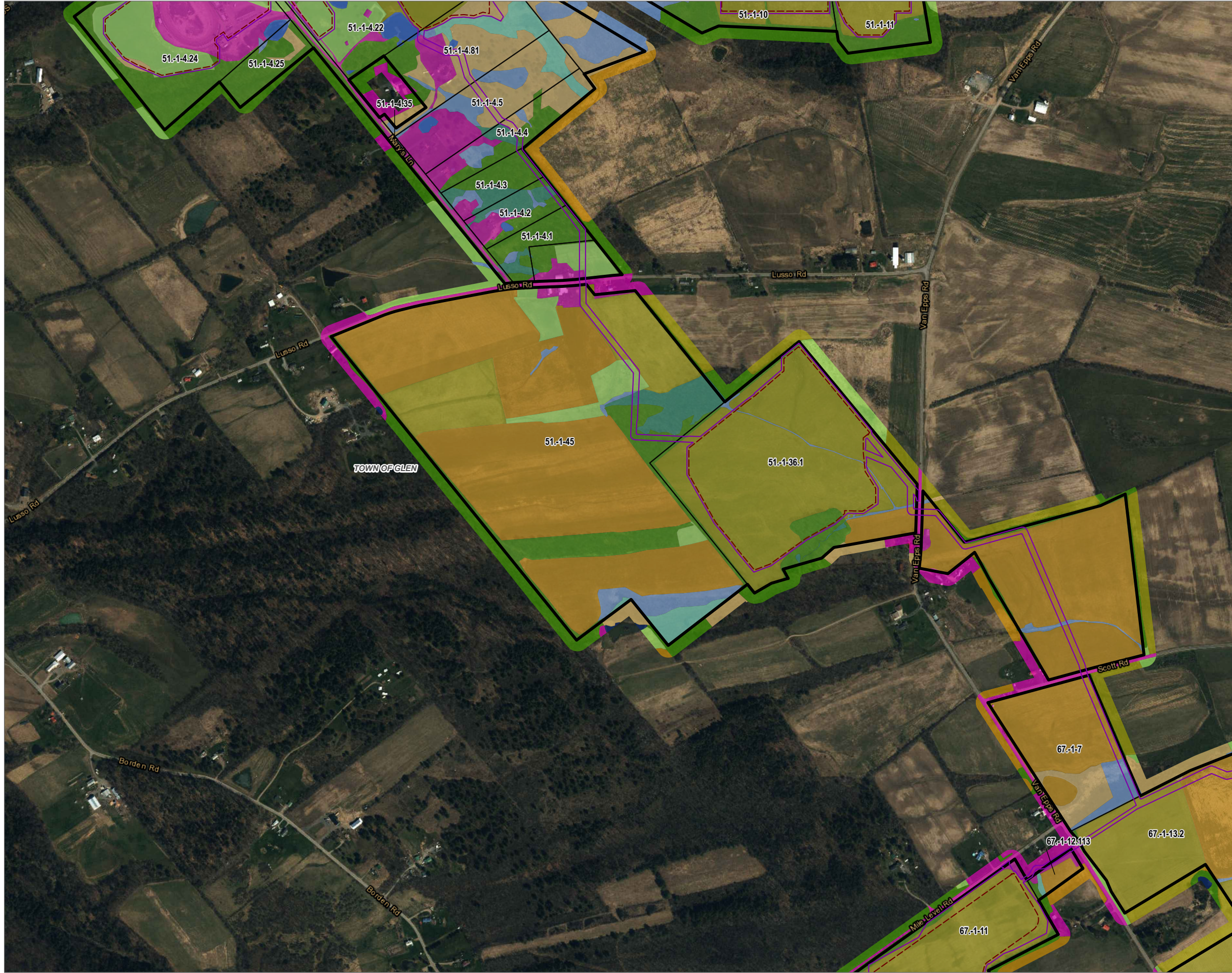
- FENCE LINE
- LIMITS OF DISTURBANCE
- ACTIVE AG/HAY PASTURE
- ACTIVE AG/ROW CROP
- DELINEATED PEM WETLAND
- DELINEATED PFO WETLAND
- DELINEATED PSS WETLAND
- DELINEATED PUB WETLAND
- DEVELOPED
- FOREST
- GRASSLAND/OLD FIELD
- OPEN WATER
- SUCCESSIONAL SHRUBLAND
- FACILITY SITE PARCEL
- FACILITY SITE
- TOWN BOUNDARY
- VILLAGE BOUNDARY

BASE MAP: ESRI WORLD IMAGERY BASEMAP SERVICE - 3/30/2022.
 DATA SOURCES: ESRI, USGS, TRC.



PROJECT: CONNECTGEN MONTGOMERY COUNTY LLC MILL POINT SOLAR I TOWN OF GLEN, MONTGOMERY COUNTY, NY	
TITLE: LAND COVER WITHIN THE FACILITY SITE	
DRAWN BY: A. KAILAS	PROJ. NO.: 411360.1000.0000
CHECKED BY: C. PEARCE	FIGURE 11-1 MAP 1 OF 7
APPROVED BY: T. KONDAK	
DATE: JANUARY 2024	
TRC	
3 CORPORATE DRIVE SUITE 202 CLIFTON PARK, NY 12065 PHONE: 518.348.1190	
FILE:	Mill_Point_94C_Ext1.aprx

Coordinate System: NAD 1983 StatePlane New York East FIPS 3101 Feet; Map Rotation: 0
 -- Saved By: AKAILAS on 1/23/2024, 14:49:28 PM; File Path: T:\1-PROJECTS\ConnectGen\411360-Mill_Point_Solar\2-APR\Mill_Point_Solar\2-APR\Mill_Point_94C_Ext1.aprx; Layout Name: Mill_Point_Ext1_Fig1_Landcover_T1x17L

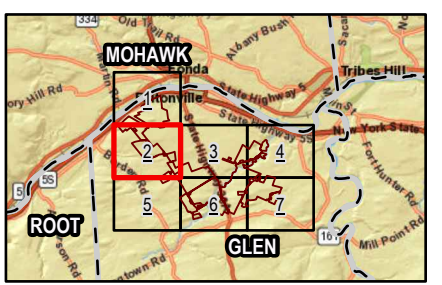
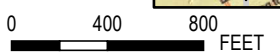


- FENCE LINE
- LIMITS OF DISTURBANCE
- ACTIVE AG/HAY PASTURE
- ACTIVE AG/ROW CROP
- DELINEATED PEM WETLAND
- DELINEATED PFO WETLAND
- DELINEATED PSS WETLAND
- DELINEATED PUB WETLAND
- DEVELOPED
- FOREST
- GRASSLAND/OLD FIELD
- OPEN WATER
- SUCCESSIONAL SHRUBLAND
- FACILITY SITE PARCEL
- FACILITY SITE
- TOWN BOUNDARY
- VILLAGE BOUNDARY

BASE MAP: ESRI WORLD IMAGERY BASEMAP SERVICE - 3/30/2022.
 DATA SOURCES: ESRI, USGS, TRC.



1:9,600
 1" = 800'



PROJECT: CONNECTGEN MONTGOMERY COUNTY LLC MILL POINT SOLAR I TOWN OF GLEN, MONTGOMERY COUNTY, NY	
TITLE: LAND COVER WITHIN THE FACILITY SITE	
DRAWN BY: A. KAILAS	PROJ. NO.: 411360.1000.0000
CHECKED BY: C. PEARCE	FIGURE 11-1 MAP 2 OF 7
APPROVED BY: T. KONDAK	
DATE: JANUARY 2024	
TRC	
3 CORPORATE DRIVE SUITE 202 CLIFTON PARK, NY 12065 PHONE: 518.348.1190	
FILE:	Mill_Point_94C_Ext1.aprx

Coordinate System: NAD 1983 StatePlane New York East FIPS 3101 Feet; Map Rotation: 0
 -- Saved By: AKAILAS on: 1/23/2024, 14:49:28 PM; File Path: T:\1-PROJECTS\ConnectGen\411360\Mill_Point_Solar\2-APRX\Mill_Point_94C_Ext1.aprx; Layout Name: Mill_Point_Ext1_Fig1_Landcover_T1x17L

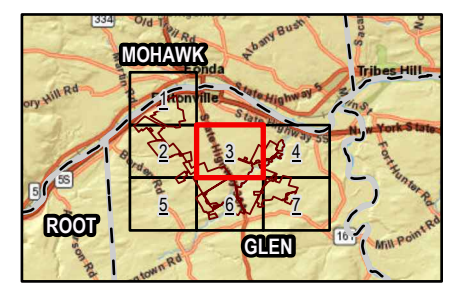
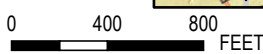


- FENCE LINE
- LIMITS OF DISTURBANCE
- ACTIVE AG/HAY PASTURE
- ACTIVE AG/ROW CROP
- DELINEATED PEM WETLAND
- DELINEATED PFO WETLAND
- DELINEATED PSS WETLAND
- DELINEATED PUB WETLAND
- DEVELOPED
- FOREST
- GRASSLAND/OLD FIELD
- OPEN WATER
- SUCCESSIONAL SHRUBLAND
- FACILITY SITE PARCEL
- FACILITY SITE
- TOWN BOUNDARY
- VILLAGE BOUNDARY

BASE MAP: ESRI WORLD IMAGERY BASEMAP SERVICE - 3/30/2022.
 DATA SOURCES: ESRI, USGS, TRC.



1:9,600
 1" = 800'



PROJECT: CONNECTGEN MONTGOMERY COUNTY LLC MILL POINT SOLAR I TOWN OF GLEN, MONTGOMERY COUNTY, NY	
TITLE: LAND COVER WITHIN THE FACILITY SITE	
DRAWN BY: A. KAILAS	PROJ. NO.: 411360.1000.0000
CHECKED BY: C. PEARCE	FIGURE 11-1 MAP 3 OF 7
APPROVED BY: T. KONDAK	
DATE: JANUARY 2024	
TRC	
3 CORPORATE DRIVE SUITE 202 CLIFTON PARK, NY 12065 PHONE: 518.348.1190	
FILE: Mill_Point_94C_Ext1.aprx	

Coordinate System: NAD 1983 StatePlane New York East FIPS 3101 Feet; Map Rotation: 0
 Saved By: AKAILAS on 1/23/2024, 14:49:28 PM; File Path: T:\PROJECTS\ConnectGen\411360-Mill_Point_94C_Ext1.aprx; Layout Name: Mill_Point_94C_Ext1_Landcover_T1x17L

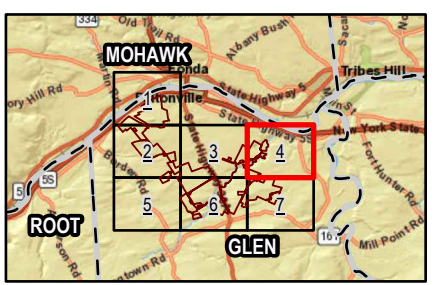
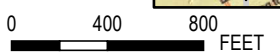


- FENCE LINE
- LIMITS OF DISTURBANCE
- ACTIVE AG/HAY PASTURE
- ACTIVE AG/ROW CROP
- DELINEATED PEM WETLAND
- DELINEATED PFO WETLAND
- DELINEATED PSS WETLAND
- DELINEATED PUB WETLAND
- DEVELOPED
- FOREST
- GRASSLAND/OLD FIELD
- OPEN WATER
- SUCCESSIONAL SHRUBLAND
- FACILITY SITE PARCEL
- FACILITY SITE
- TOWN BOUNDARY
- VILLAGE BOUNDARY

BASE MAP: ESRI WORLD IMAGERY BASEMAP SERVICE - 3/30/2022.
 DATA SOURCES: ESRI, USGS, TRC.



1:9,600
 1" = 800'



PROJECT: CONNECTGEN MONTGOMERY COUNTY LLC MILL POINT SOLAR I TOWN OF GLEN, MONTGOMERY COUNTY, NY	
TITLE: LAND COVER WITHIN THE FACILITY SITE	
DRAWN BY: A. KAILAS	PROJ. NO.: 411360.1000.0000
CHECKED BY: C. PEARCE	FIGURE 11-1 MAP 4 OF 7
APPROVED BY: T. KONDAK	
DATE: JANUARY 2024	
TRC	
3 CORPORATE DRIVE SUITE 202 CLIFTON PARK, NY 12065 PHONE: 518.348.1190	
FILE:	Mill_Point_94C_Ext1.aprx

Coordinate System: NAD 1983 StatePlane New York East FIPS 3101 Feet; Map Rotation: 0
 - Saved By: AKAILAS on: 1/23/2024, 14:49:26 PM; File Path: T:\1-PROJECTS\ConnectGen\411360-Mill_Point_Solar\2-APRX\Mill_Point_Solar\Mill_Point_Solar_94C_Ext1.aprx; Layout Name: Mill_Point_Ext1_Fig_T_Landcover_T1x17L

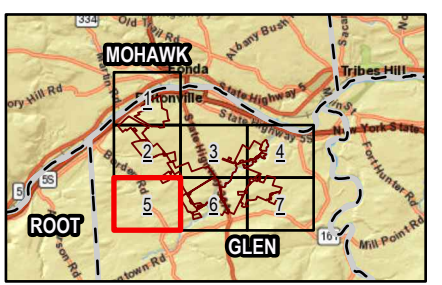
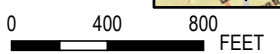


- FENCE LINE
- LIMITS OF DISTURBANCE
- ACTIVE AG/HAY PASTURE
- ACTIVE AG/ROW CROP
- DELINEATED PEM WETLAND
- DELINEATED PFO WETLAND
- DELINEATED PSS WETLAND
- DELINEATED PUB WETLAND
- DEVELOPED
- FOREST
- GRASSLAND/OLD FIELD
- OPEN WATER
- SUCCESSIONAL SHRUBLAND
- FACILITY SITE PARCEL
- FACILITY SITE
- TOWN BOUNDARY
- VILLAGE BOUNDARY

BASE MAP: ESRI WORLD IMAGERY BASEMAP SERVICE - 3/30/2022.
 DATA SOURCES: ESRI, USGS, TRC.

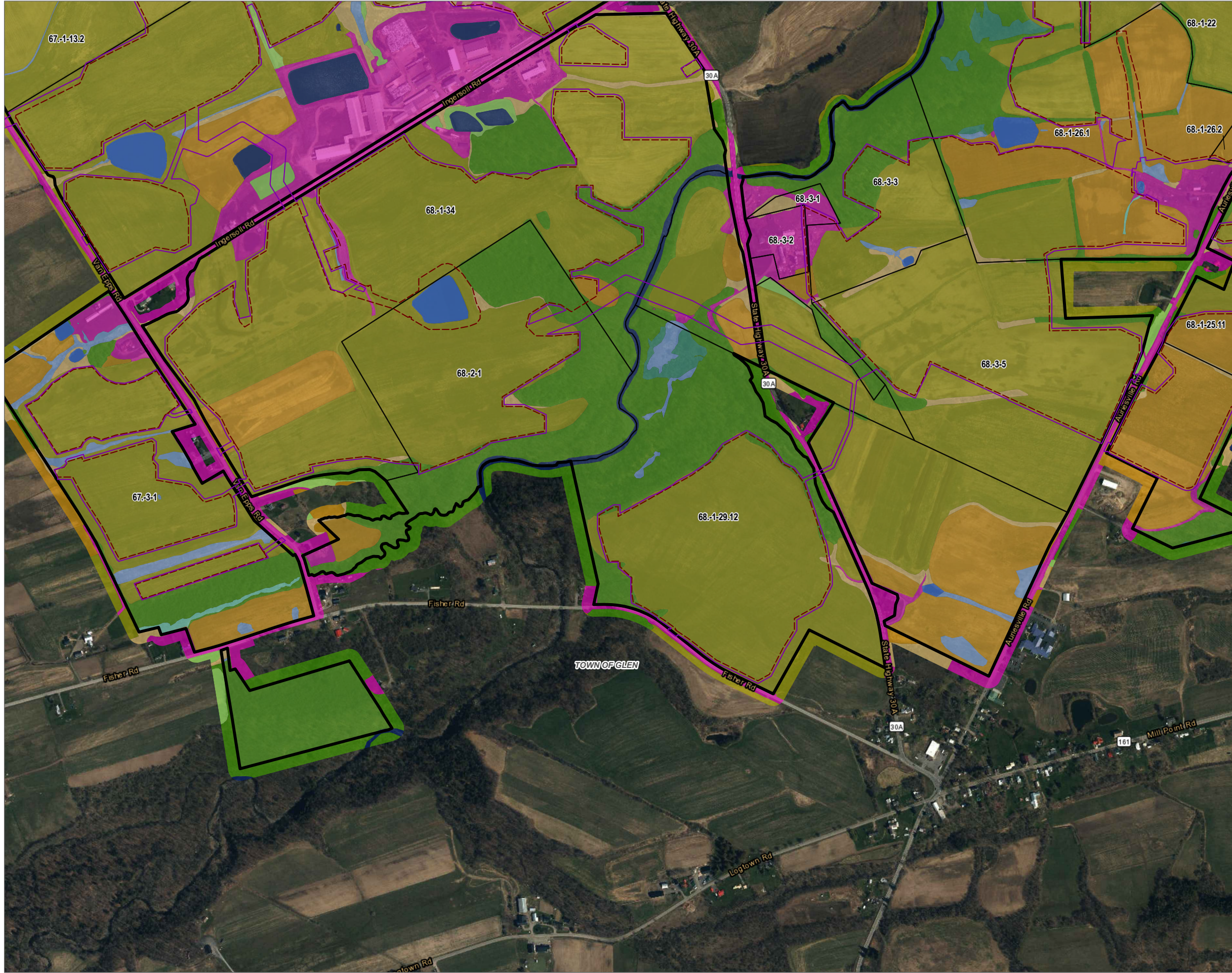


1:9,600
 1" = 800'



PROJECT: CONNECTGEN MONTGOMERY COUNTY LLC MILL POINT SOLAR I TOWN OF GLEN, MONTGOMERY COUNTY, NY	
TITLE: LAND COVER WITHIN THE FACILITY SITE	
DRAWN BY: A. KAILAS	PROJ. NO.: 411360.1000.0000
CHECKED BY: C. PEARCE	FIGURE 11-1 MAP 5 OF 7
APPROVED BY: T. KONDAK	
DATE: JANUARY 2024	
TRC	
3 CORPORATE DRIVE SUITE 202 CLIFTON PARK, NY 12065 PHONE: 518.348.1190	
FILE: Mill_Point_94C_Ext1.aprx	

Coordinate System: NAD 1983 StatePlane New York East FIPS 3101 Feet; Map Rotation: 0
 Saved By: AKAILAS on 1/23/2024, 14:49:26 PM; File Path: T:\1-PROJECTS\ConnectGen\411360\Mill_Point_Solar\2-APRX\Mill_Point_94C_Ext1.aprx; Layout Name: Mill_Point_Ext1_Fig1_Landcover_T1x17L

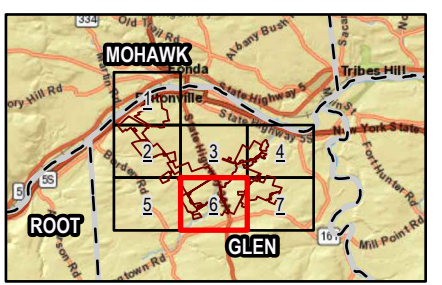


- FENCE LINE
- LIMITS OF DISTURBANCE
- ACTIVE AG/HAY PASTURE
- ACTIVE AG/ROW CROP
- DELINEATED PEM WETLAND
- DELINEATED PFO WETLAND
- DELINEATED PSS WETLAND
- DELINEATED PUB WETLAND
- DEVELOPED
- FOREST
- GRASSLAND/OLD FIELD
- OPEN WATER
- SUCCESSIONAL SHRUBLAND
- FACILITY SITE PARCEL
- FACILITY SITE
- TOWN BOUNDARY
- VILLAGE BOUNDARY

BASE MAP: ESRI WORLD IMAGERY BASEMAP SERVICE - 3/30/2022.
 DATA SOURCES: ESRI, USGS, TRC.



1:9,600
 1" = 800'



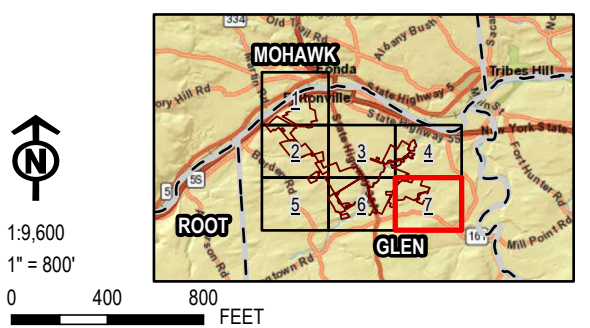
PROJECT: CONNECTGEN MONTGOMERY COUNTY LLC MILL POINT SOLAR I TOWN OF GLEN, MONTGOMERY COUNTY, NY	
TITLE: LAND COVER WITHIN THE FACILITY SITE	
DRAWN BY: A. KAILAS	PROJ. NO.: 411360.1000.0000
CHECKED BY: C. PEARCE	FIGURE 11-1 MAP 6 OF 7
APPROVED BY: T. KONDAK	
DATE: JANUARY 2024	
TRC	
3 CORPORATE DRIVE SUITE 202 CLIFTON PARK, NY 12065 PHONE: 518.348.1190	
FILE:	Mill_Point_94C_Ext1.aprx

Coordinate System: NAD 1983 StatePlane New York East FIPS 3101 Feet; Map Rotation: 0
 -- Saved By: AKAILAS on 1/23/2024, 14:49:26 PM; File Path: T:\1-PROJECTS\ConnectGen\41360-Mill_Point_Solar\2-APRX\Mill_Point_94C_Ext1.aprx; Layout Name: Mill_Point_Ext1_Fig_Landcover_T11717L



- FENCE LINE
- LIMITS OF DISTURBANCE
- ACTIVE AG/HAY PASTURE
- ACTIVE AG/ROW CROP
- DELINEATED PEM WETLAND
- DELINEATED PFO WETLAND
- DELINEATED PSS WETLAND
- DELINEATED PUB WETLAND
- DEVELOPED
- FOREST
- GRASSLAND/OLD FIELD
- OPEN WATER
- SUCCESSIONAL SHRUBLAND
- FACILITY SITE PARCEL
- FACILITY SITE
- TOWN BOUNDARY
- VILLAGE BOUNDARY

BASE MAP: ESRI WORLD IMAGERY BASEMAP SERVICE - 3/30/2022.
 DATA SOURCES: ESRI, USGS, TRC.



PROJECT: CONNECTGEN MONTGOMERY COUNTY LLC MILL POINT SOLAR I TOWN OF GLEN, MONTGOMERY COUNTY, NY	
TITLE: LAND COVER WITHIN THE FACILITY SITE	
DRAWN BY: A. KAILAS	PROJ. NO.: 411360.1000.0000
CHECKED BY: C. PEARCE	FIGURE 11-1 MAP 7 OF 7
APPROVED BY: T. KONDAK	
DATE: JANUARY 2024	
TRC	
3 CORPORATE DRIVE SUITE 202 CLIFTON PARK, NY 12065 PHONE: 518.348.1190	
FILE: Mill_Point_94C_Ext1.aprx	