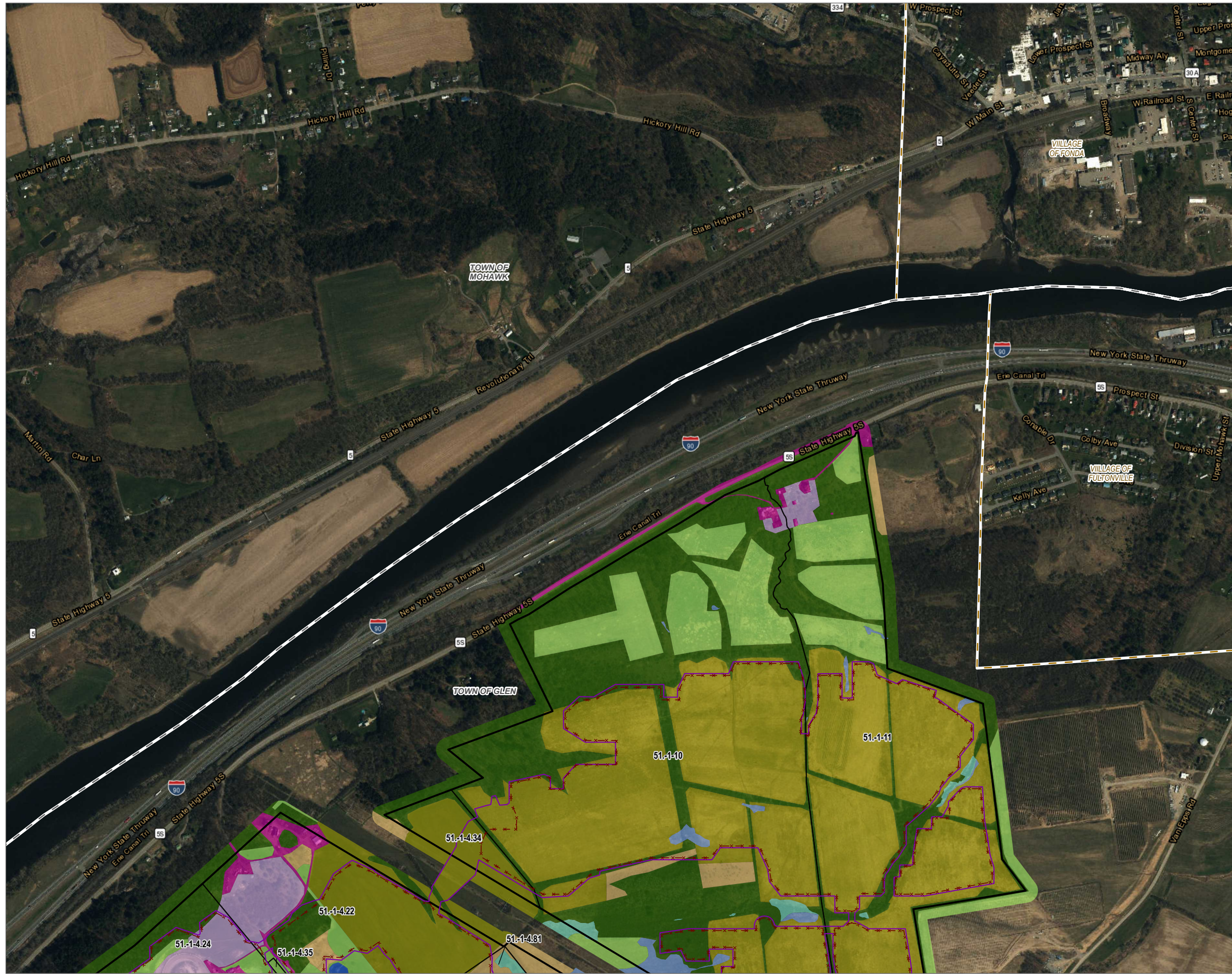


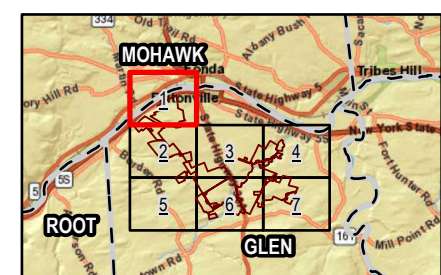
Coordinate System: NAD 1983 StatePlane New York East FIPS 3101 Feet, Map Rotation: 0  
-- Saved By: AKAILAS on 7/22/2024, 12:28:19 PM, File Path: \\empeesgis\gis\proj\1-PROJECTS\ConnectGen\411360-Mill Point Solar\2-APRX\Mill Point\_94C\_Ext1.aprx, Layout Name: MPT\_Ext1\_Fig1\_Landcover\_11x17L




- x - x - FENCE LINE
- LIMITS OF DISTURBANCE
- ACTIVE AG/HAY PASTURE
- ACTIVE AG/ROW CROP
- DELINEATED PEM WETLAND
- DELINEATED PFO WETLAND
- DELINEATED PSS WETLAND
- DELINEATED PUB WETLAND
- DEVELOPED IMPERVIOUS
- DEVELOPED PERVIOUS
- SUCCESSIONAL SOUTHERN HARDWOODS
- GRASSLAND/OLD FIELD
- OPEN WATER
- SUCCESSIONAL SHRUBLAND
- FACILITY SITE PARCEL
- FACILITY SITE
- TOWN BOUNDARY
- VILLAGE BOUNDARY

BASE MAP: ESRI WORLD IMAGERY BASEMAP SERVICE - 3/30/2022.  
DATA SOURCES: ESRI, USGS, TRC.

1:9,600  
1" = 800'  
0 400 800 FEET



PROJECT: <b>CONNECTGEN MONTGOMERY COUNTY LLC MILL POINT SOLAR I TOWN OF GLEN, MONTGOMERY COUNTY, NY</b>		
TITLE: <b>LAND COVER WITHIN THE FACILITY SITE</b>		
DRAWN BY: A. KAILAS	PROJ. NO.: 411360.1000.0000	<b>REVISED FIGURE 11-1 MAP 1 OF 7</b>
CHECKED BY: C. PEARCE		
APPROVED BY: T. KONDAK		
DATE: JULY 2024		
		3 CORPORATE DRIVE SUITE 202 CLIFTON PARK, NY 12065 PHONE: 518.348.1190
FILE:		Mill_Point_94C_Ext1.aprx



Coordinate System: NAD 1983 StatePlane New York East FIPS 3101 Feet, Map Rotation: 0  
-- Saved By: AKAILAS on 7/22/2024, 12:28:19 PM, File Path: I:\employees\sgs\rgs\proj1-PROJECTS\ConnectGen\411360-Mill Point Solar\2-APRX\Mill Point\_94C\_Ex11.aprx, Layout Name: MPT\_Ext11\_Fig1\_Landcover\_11x17L



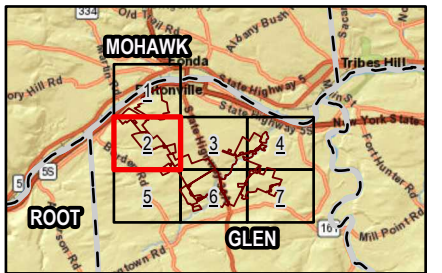
- FENCE LINE
- LIMITS OF DISTURBANCE
- ACTIVE AG/HAY PASTURE
- ACTIVE AG/ROW CROP
- DELINEATED PEM WETLAND
- DELINEATED PFO WETLAND
- DELINEATED PSS WETLAND
- DELINEATED PUB WETLAND
- DEVELOPED IMPERVIOUS
- DEVELOPED PERVIOUS
- SUCCESSIONAL SOUTHERN HARDWOODS
- GRASSLAND/OLD FIELD
- OPEN WATER
- SUCCESSIONAL SHRUBLAND
- FACILITY SITE PARCEL
- FACILITY SITE
- TOWN BOUNDARY
- VILLAGE BOUNDARY


BASE MAP: ESRI WORLD IMAGERY BASEMAP SERVICE - 3/30/2022.  
DATA SOURCES: ESRI, USGS, TRC.



1:9,600  
1" = 800'

0 400 800 FEET



PROJECT: <b>CONNECTGEN MONTGOMERY COUNTY LLC MILL POINT SOLAR I TOWN OF GLEN, MONTGOMERY COUNTY, NY</b>	
TITLE: <b>LAND COVER WITHIN THE FACILITY SITE</b>	
DRAWN BY: A. KAILAS	PROJ. NO.: 411360.1000.0000
CHECKED BY: C. PEARCE	<b>REVISED FIGURE 11-1 MAP 2 OF 7</b>
APPROVED BY: T. KONDAK	
DATE: JULY 2024	
<div><div>3 CORPORATE DRIVE SUITE 202 CLIFTON PARK, NY 12065 PHONE: 518.348.1190</div></div>	
FILE:	Mill_Point_94C_Ex11.aprx



Coordinate System: NAD 1983 StatePlane New York East FIPS 3101 Feet, Map Rotation: 0  
-- Saved By: AKAILAS on 7/22/2024, 12:28:19 PM, File Path: \\empeesgis\server\proj1\PROJECTS\ConnectGen\411360-Mill Point Solar\2-APRX\Mill Point\_94C\_Ext1.aprx, Layout Name: MPT\_Ext1\_Fig1\_Landcover\_11x17L



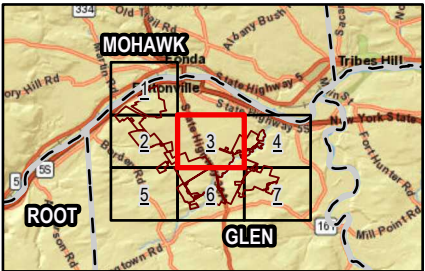
- FENCE LINE
- LIMITS OF DISTURBANCE
- ACTIVE AG/HAY PASTURE
- ACTIVE AG/ROW CROP
- DELINEATED PEM WETLAND
- DELINEATED PFO WETLAND
- DELINEATED PSS WETLAND
- DELINEATED PUB WETLAND
- DEVELOPED IMPERVIOUS
- DEVELOPED PERVIOUS
- SUCCESSIONAL SOUTHERN HARDWOODS
- GRASSLAND/OLD FIELD
- OPEN WATER
- SUCCESSIONAL SHRUBLAND
- FACILITY SITE PARCEL
- FACILITY SITE
- TOWN BOUNDARY
- VILLAGE BOUNDARY


BASE MAP: ESRI WORLD IMAGERY BASEMAP SERVICE - 3/30/2022.  
DATA SOURCES: ESRI, USGS, TRC.



1:9,600  
1" = 800'

0 400 800 FEET



PROJECT: <b>CONNECTGEN MONTGOMERY COUNTY LLC</b> <b>MILL POINT SOLAR I</b> <b>TOWN OF GLEN, MONTGOMERY COUNTY, NY</b>	
TITLE: <b>LAND COVER WITHIN THE FACILITY SITE</b>	
DRAWN BY: A. KAILAS	PROJ. NO.: 411360.1000.0000
CHECKED BY: C. PEARCE	<b>REVISED FIGURE 11-1</b> <b>MAP 3 OF 7</b>
APPROVED BY: T. KONDAK	
DATE: JULY 2024	
<div><div>3 CORPORATE DRIVE SUITE 202 CLIFTON PARK, NY 12065 PHONE: 518.348.1190</div></div>	
FILE:	Mill_Point_94C_Ext1.aprx



Coordinate System: NAD 1983 StatePlane New York East FIPS 3101 Feet, Map Rotation: 0  
-- Saved By: AKAILAS on 7/22/2024, 12:28:19 PM, File Path: I:\employees\akailas\proj1\PROJECTS\ConnectGen\411360-Mill Point Solar\2-APR\Mill Point\_94C\_Ext1.aprx, Layout Name: MPT\_Ext1\_Fig1\_Landcover, 11x17L



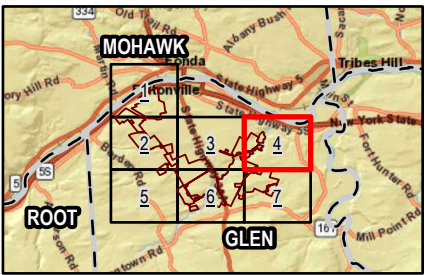
- FENCE LINE
- LIMITS OF DISTURBANCE
- ACTIVE AG/HAY PASTURE
- ACTIVE AG/ROW CROP
- DELINEATED PEM WETLAND
- DELINEATED PFO WETLAND
- DELINEATED PSS WETLAND
- DELINEATED PUB WETLAND
- DEVELOPED IMPERVIOUS
- DEVELOPED PERVIOUS
- SUCCESSIONAL SOUTHERN HARDWOODS
- GRASSLAND/OLD FIELD
- OPEN WATER
- SUCCESSIONAL SHRUBLAND
- FACILITY SITE PARCEL
- FACILITY SITE
- TOWN BOUNDARY
- VILLAGE BOUNDARY


BASE MAP: ESRI WORLD IMAGERY BASEMAP SERVICE - 3/30/2022.  
DATA SOURCES: ESRI, USGS, TRC.



1:9,600  
1" = 800'

0 400 800 FEET



PROJECT: <b>CONNECTGEN MONTGOMERY COUNTY LLC MILL POINT SOLAR I TOWN OF GLEN, MONTGOMERY COUNTY, NY</b>	
TITLE: <b>LAND COVER WITHIN THE FACILITY SITE</b>	
DRAWN BY: A. KAILAS	PROJ. NO.: 411360.1000.0000
CHECKED BY: C. PEARCE	<b>REVISED FIGURE 11-1 MAP 4 OF 7</b>
APPROVED BY: T. KONDAK	
DATE: JULY 2024	
<div><b>TRC</b></div> <div>3 CORPORATE DRIVE SUITE 202 CLIFTON PARK, NY 12065 PHONE: 518.348.1190</div>	
FILE:	Mill_Point_94C_Ext1.aprx



Coordinate System: NAD 1983 StatePlane New York East FIPS 3101 Feet, Map Rotation: 0  
-- Saved By: AKAILAS on 7/22/2024, 12:28:19 PM, File Path: \\emplyeeesglsrgrsproj1-PROJECTS\ConnectGEN\411360-Mill Point Solar\2-APRX\Mill Point\_94C\_Ext1.aprx, Layout Name: MPT\_Ext1, Fig1\_Landcover, 11x17L



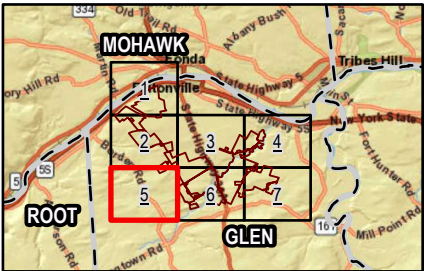
- x - x - FENCE LINE
- LIMITS OF DISTURBANCE
- ACTIVE AG/HAY PASTURE
- ACTIVE AG/ROW CROP
- DELINEATED PEM WETLAND
- DELINEATED PFO WETLAND
- DELINEATED PSS WETLAND
- DELINEATED PUB WETLAND
- DEVELOPED IMPERVIOUS
- DEVELOPED PERVIOUS
- SUCCESSIONAL SOUTHERN HARDWOODS
- GRASSLAND/OLD FIELD
- OPEN WATER
- SUCCESSIONAL SHRUBLAND
- FACILITY SITE PARCEL
- FACILITY SITE
- TOWN BOUNDARY
- VILLAGE BOUNDARY


BASE MAP: ESRI WORLD IMAGERY BASEMAP SERVICE - 3/30/2022.  
DATA SOURCES: ESRI, USGS, TRC.



1:9,600  
1" = 800'

0 400 800 FEET



PROJECT: <b>CONNECTGEN MONTGOMERY COUNTY LLC MILL POINT SOLAR I TOWN OF GLEN, MONTGOMERY COUNTY, NY</b>	
TITLE: <b>LAND COVER WITHIN THE FACILITY SITE</b>	
DRAWN BY: A. KAILAS	PROJ. NO.: 411360.1000.0000
CHECKED BY: C. PEARCE	<b>REVISED FIGURE 11-1 MAP 5 OF 7</b>
APPROVED BY: T. KONDAK	
DATE: JULY 2024	
	
3 CORPORATE DRIVE SUITE 202 CLIFTON PARK, NY 12065 PHONE: 518.348.1190	
FILE: Mill_Point_94C_Ext1.aprx	

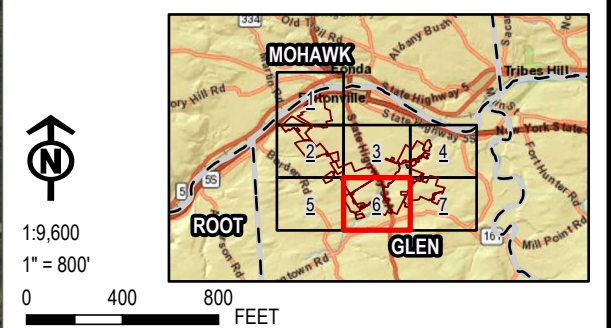



Coordinate System: NAD 1983 StatePlane New York East FIPS 3101 Feet, Map Rotation: 0  
-- Saved By: AKAILAS on 7/22/2024, 12:28:19 PM, File Path: I:\employees\gis\mrg\proj1-PROJECTS\ConnectGen\411360-Mill Point Solar\2-APRX\Mill Point\_94C\_Ex11.aprx, Layout Name: MPT\_Ext11\_Fig1\_Landcover\_11x17L



- FENCE LINE
- LIMITS OF DISTURBANCE
- ACTIVE AG/HAY PASTURE
- ACTIVE AG/ROW CROP
- DELINEATED PEM WETLAND
- DELINEATED PFO WETLAND
- DELINEATED PSS WETLAND
- DELINEATED PUB WETLAND
- DEVELOPED IMPERVIOUS
- DEVELOPED PERVIOUS
- SUCCESSIONAL SOUTHERN HARDWOODS
- GRASSLAND/OLD FIELD
- OPEN WATER
- SUCCESSIONAL SHRUBLAND
- FACILITY SITE PARCEL
- FACILITY SITE
- TOWN BOUNDARY
- VILLAGE BOUNDARY

BASE MAP: ESRI WORLD IMAGERY BASEMAP SERVICE - 3/30/2022.  
DATA SOURCES: ESRI, USGS, TRC.



PROJECT: <b>CONNECTGEN MONTGOMERY COUNTY LLC MILL POINT SOLAR I TOWN OF GLEN, MONTGOMERY COUNTY, NY</b>	
TITLE: <b>LAND COVER WITHIN THE FACILITY SITE</b>	
DRAWN BY: <b>A. KAILAS</b>	PROJ. NO.: <b>411360.1000.0000</b>
CHECKED BY: <b>C. PEARCE</b>	<b>REVISED FIGURE 11-1 MAP 6 OF 7</b>
APPROVED BY: <b>T. KONDAK</b>	
DATE: <b>JULY 2024</b>	
<div><b>TRC</b></div> <div><b>3 CORPORATE DRIVE SUITE 202 CLIFTON PARK, NY 12065 PHONE: 518.348.1190</b></div>	
FILE:	<b>Mill_Point_94C_Ex11.aprx</b>



Coordinate System: NAD 1983 StatePlane New York East FIPS 3101 Feet, Map Rotation: 0  
-- Saved By: AKAILAS on 7/22/2024, 12:28:19 PM, File Path: I:\employees\gis\mgis\proj1-PROJECTS\ConnectGEN\411360-Mill\_Pont\_Solar\2-APRX\Mill\_Pont\_94C\_Ext1.aprx, Layout Name: MPT\_Ext1, Fig1\_Landcover, 11x17L



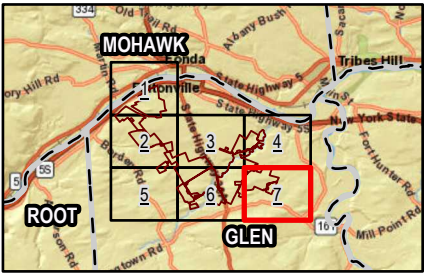
- FENCE LINE
- LIMITS OF DISTURBANCE
- ACTIVE AG/HAY PASTURE
- ACTIVE AG/ROW CROP
- DELINEATED PEM WETLAND
- DELINEATED PFO WETLAND
- DELINEATED PSS WETLAND
- DELINEATED PUB WETLAND
- DEVELOPED IMPERVIOUS
- DEVELOPED PERVIOUS
- SUCCESSIONAL SOUTHERN HARDWOODS
- GRASSLAND/OLD FIELD
- OPEN WATER
- SUCCESSIONAL SHRUBLAND
- FACILITY SITE PARCEL
- FACILITY SITE
- TOWN BOUNDARY
- VILLAGE BOUNDARY


BASE MAP: ESRI WORLD IMAGERY BASEMAP SERVICE - 3/30/2022.  
DATA SOURCES: ESRI, USGS, TRC.



1:9,600  
1" = 800'

0 400 800 FEET



PROJECT: <b>CONNECTGEN MONTGOMERY COUNTY LLC MILL POINT SOLAR I TOWN OF GLEN, MONTGOMERY COUNTY, NY</b>	
TITLE: <b>LAND COVER WITHIN THE FACILITY SITE</b>	
DRAWN BY: A. KAILAS	PROJ. NO.: 411360.1000.0000
CHECKED BY: C. PEARCE	<b>REVISED FIGURE 11-1 MAP 7 OF 7</b>
APPROVED BY: T. KONDAK	
DATE: JULY 2024	
	
3 CORPORATE DRIVE SUITE 202 CLIFTON PARK, NY 12065 PHONE: 518.348.1190	
FILE: Mill_Point_94C_Ext1.aprx	