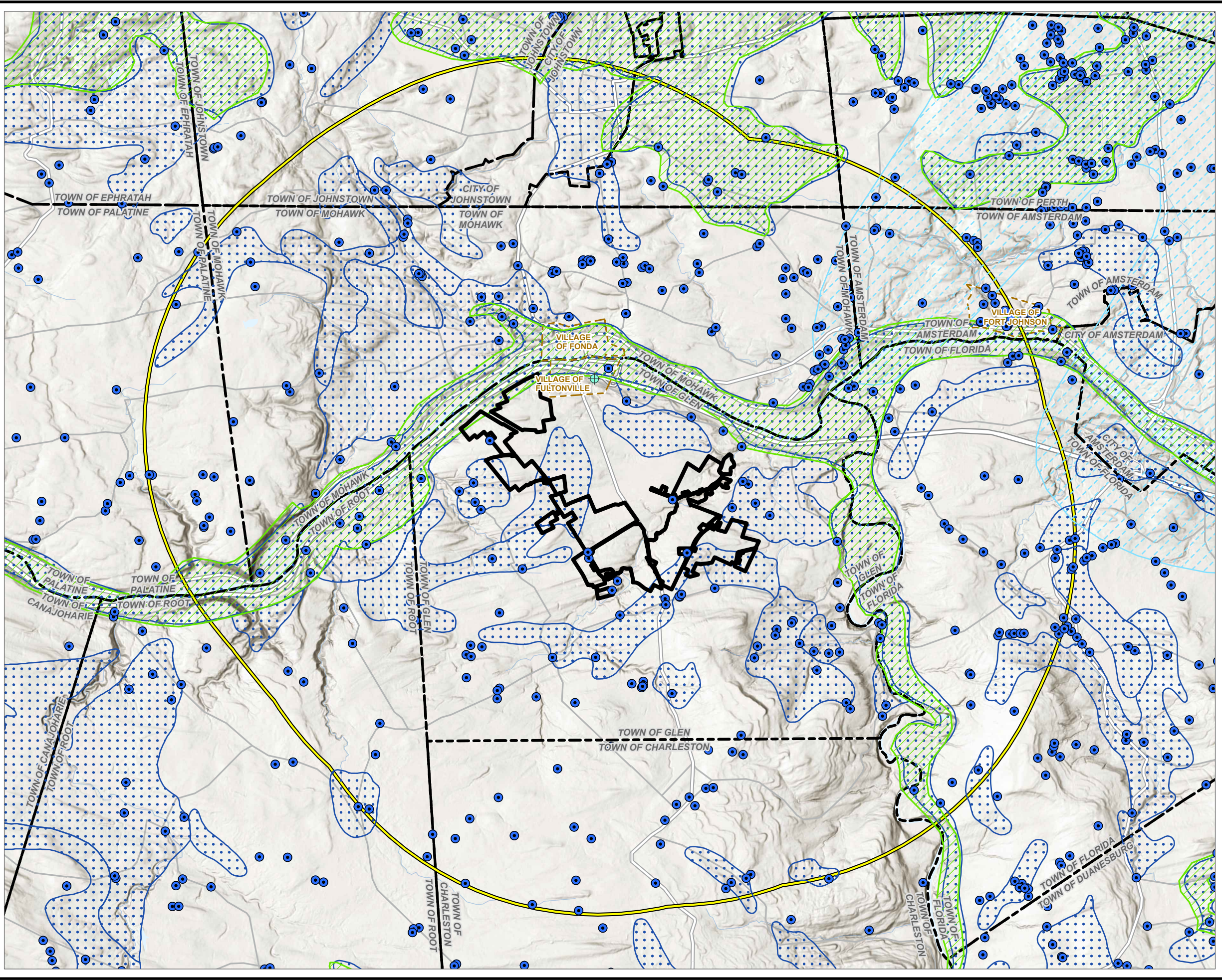


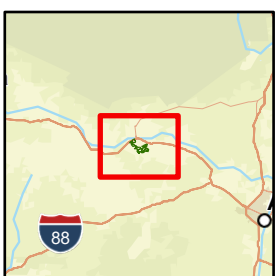
Coordinate System: NAD 1983 StatePlane New York East FIPS 3101 Feet, Map Rotation: 0
 Saved By: AKALIAS on 1/22/2024, 10:49:46 AM, File Path: T:\H-PROJECTS\ConnectGen\11360\Mill_Point_Solar\2-APR\Mill_Point_94C_Exc_13.aprx, Layout Name: MP_Fig13_1_Groundwater_Aquifers_11x17L



- DEC SURVEYED WATER WELL LOCATION
- + DRINKING WATER SUPPLY
- PRINCIPAL AQUIFERS
- NEW YORK/NEW ENGLAND CARBONATE AQUIFER
- UNCONSOLIDATED AQUIFERS
- FACILITY SITE
- 5 MILE STUDY AREA
- VILLAGE BOUNDARY
- TOWN BOUNDARY

NOTES:
 1. THE SCHENECTADY AQUIFER IS THE CLOSEST PRIMARY AQUIFER TO THE FACILITY SITE, LOCATED APPROXIMATELY 12 MILES SOUTHEAST.
 2. THE CLOSEST SOLE SOURCE AQUIFER IS THE SCHENECTADY-NISKAYUNA SSA, APPROXIMATELY 12 MILES EAST OF THE FACILITY SITE.

BASE MAP:
 ESRI WORLD TERRAIN BASEMAP.
 DATA SOURCES:
 ESRI, USGS, NYSGIS, NYSDEC, TRC.



1:96,000
 1" = 8,000'
 0 4,000 8,000 FEET

PROJECT: CONNECTGEN MONTGOMERY COUNTY LLC MILL POINT SOLAR I TOWN OF GLEN, MONTGOMERY COUNTY, NY	
TITLE: WATER WELLS, GROUNDWATER AQUIFERS, AND RECHARGE AREAS	
DRAWN BY: A. KAILAS	PROJ. NO.: 411360.1000.0000
CHECKED BY: C. PEARCE	FIGURE 13-1
APPROVED BY: T. KONDAK	
DATE: JANUARY 2024	
3 CORPORATE DRIVE SUITE 202 CLIFTON PARK, NY 12065 PHONE: 518.348.1190	
FILE:	Mill_Point_94C_Exc_13.aprx