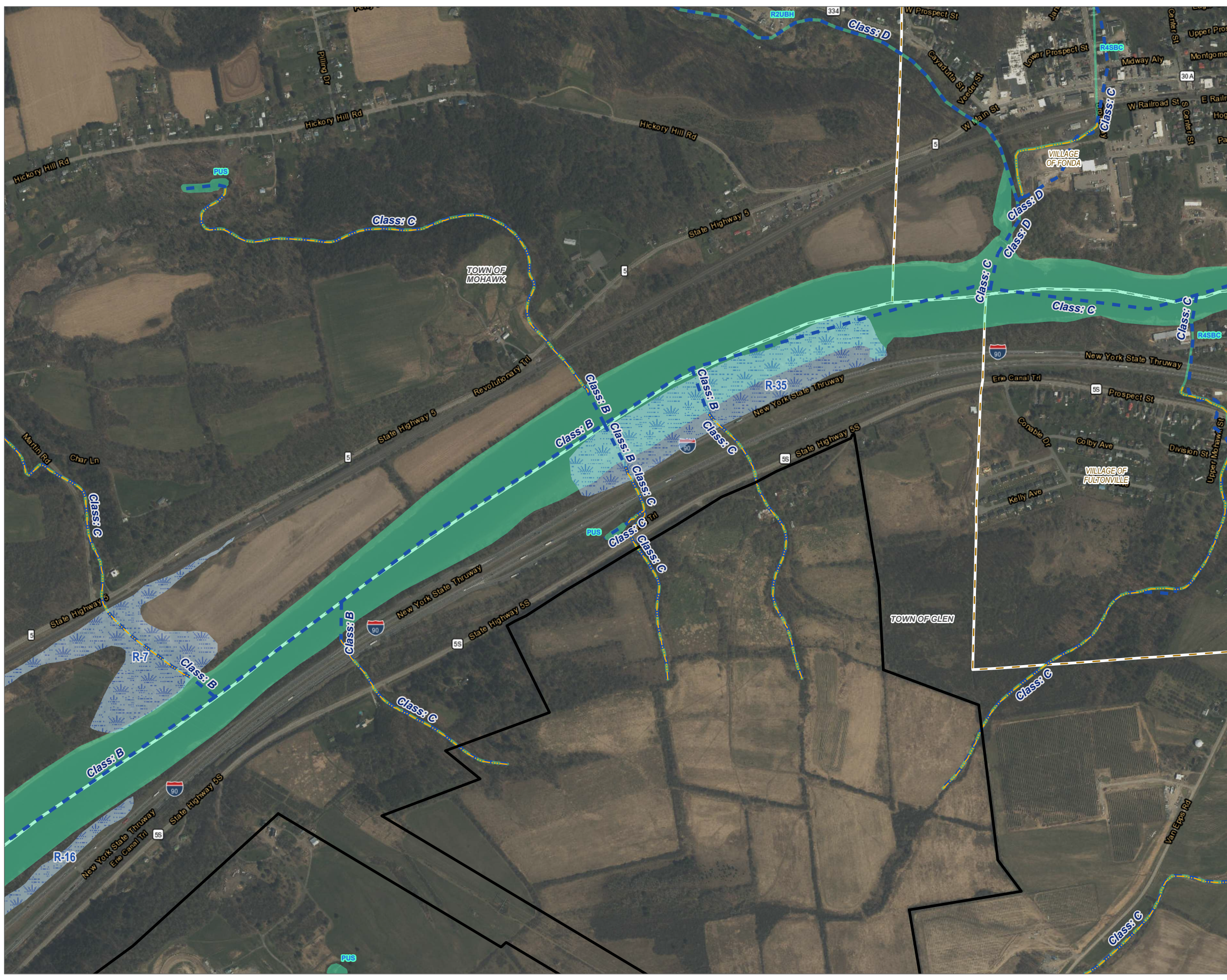


Coordinate System: NAD 1983 StatePlane New York East FIPS 3101 Feet; Map Rotation: 0
 Saved By: AKAILAS on 1/22/2024 10:49:46 AM; File Path: T:\H-PROJECTS\CONNECTGEN\11360\Mill_Point_Solar1\Map\13-2_Mapped_Wetlands_Surface_Waters_11x17L
 Layout Name: MP_Fig 13_2_Mapped_Wetlands_Surface_Waters_11x17L



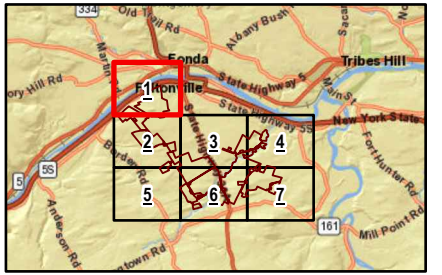
- FACILITY SITE
- WATERBODIES (NHD)
- WATERBODIES (NYSDEC)
- WETLANDS (NYSDEC)
- WETLANDS (NWI)
- TOWN BOUNDARY
- VILLAGE BOUNDARY

NOTES:
 1. THIS FIGURE IS DESIGNED TO BE VIEWED OR PRINTED IN COLOR AT 11X17.

BASE MAP: ESRI WORLD IMAGERY SERVICE (3/30/2022)
 DATA SOURCES: ESRI, NHD, NYSGIS, NYSDEC, NWI, TRC

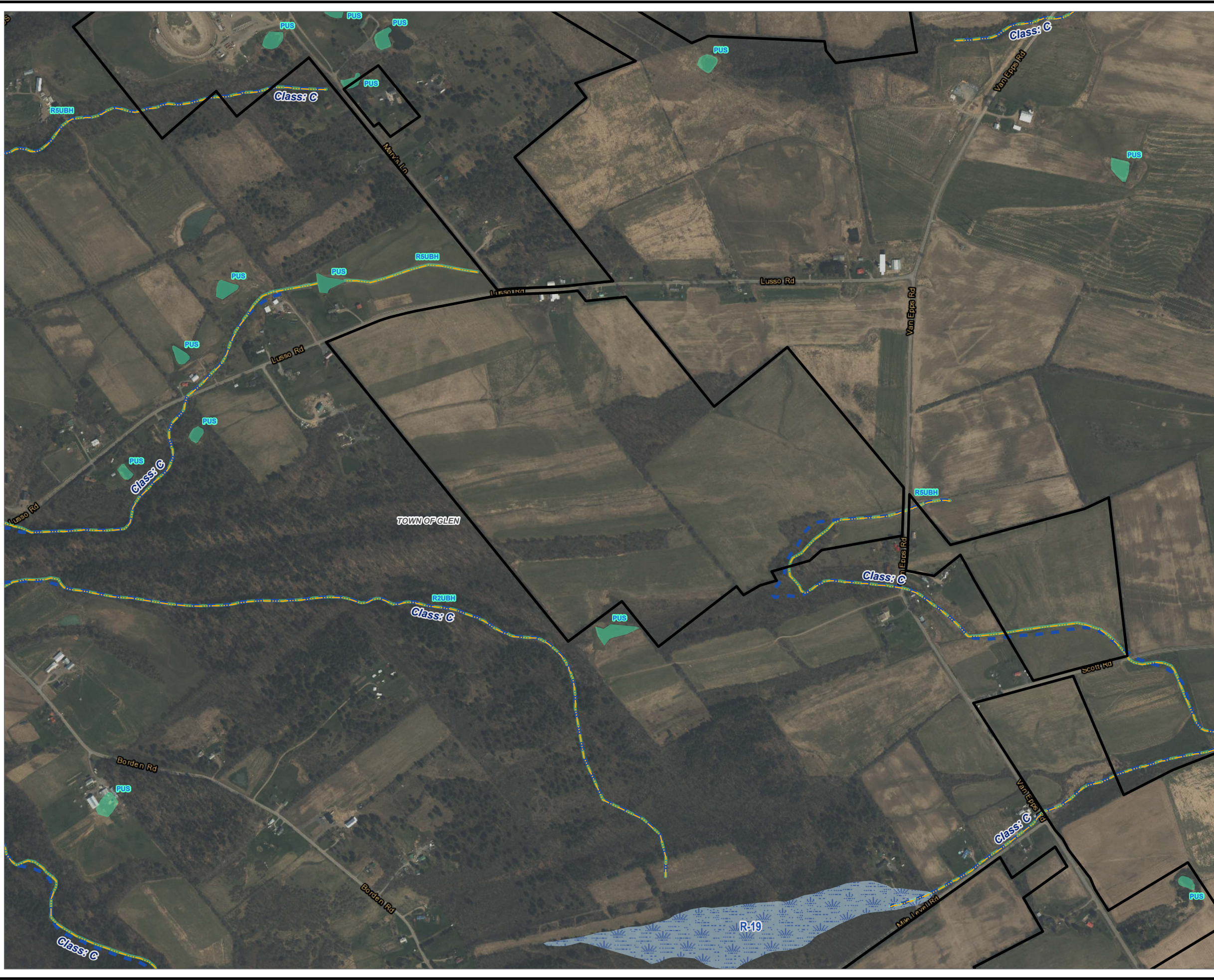


1:9,600
 1" = 800 Feet
 0 800 1,600 FEET



PROJECT: CONNECTGEN MONTGOMERY COUNTY LLC MILL POINT SOLAR I TOWN OF GLEN, MONTGOMERY COUNTY, NY	
TITLE: MAPPED WETLANDS AND SURFACE WATERS	
DRAWN BY: A. KAILAS	PROJ. NO.: 411360
CHECKED BY: C. PEARCE	FIGURE 13-2 MAP 1 OF 7
APPROVED BY: T. KONDAK	
DATE: JANUARY 2024	
3 CORPORATE DRIVE SUITE 202 CLIFTON PARK, NY 12065 PHONE: 518.348.1190	
FILE:	MILL_POINT_94C_EX_13APRX

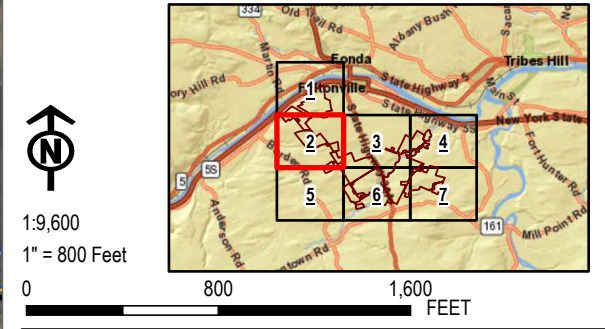
Coordinate System: NAD 1983 StatePlane New York East FIPS 3101 Feet; Map Rotation: 0
 - Saved By: AKAILAS on: 1/22/2024 - 10:48:46 AM; File Path: T:\H-PROJECTS\Connecticut\GEMMA\11360\Mill_Point_Solar1\Map\13-2_Mapped_Wetlands_Surface_Waters_11x17L



- FACILITY SITE
- WATERBODIES (NHD)
- WATERBODIES (NYSDEC)
- WETLANDS (NYSDEC)
- WETLANDS (NWI)
- TOWN BOUNDARY
- VILLAGE BOUNDARY

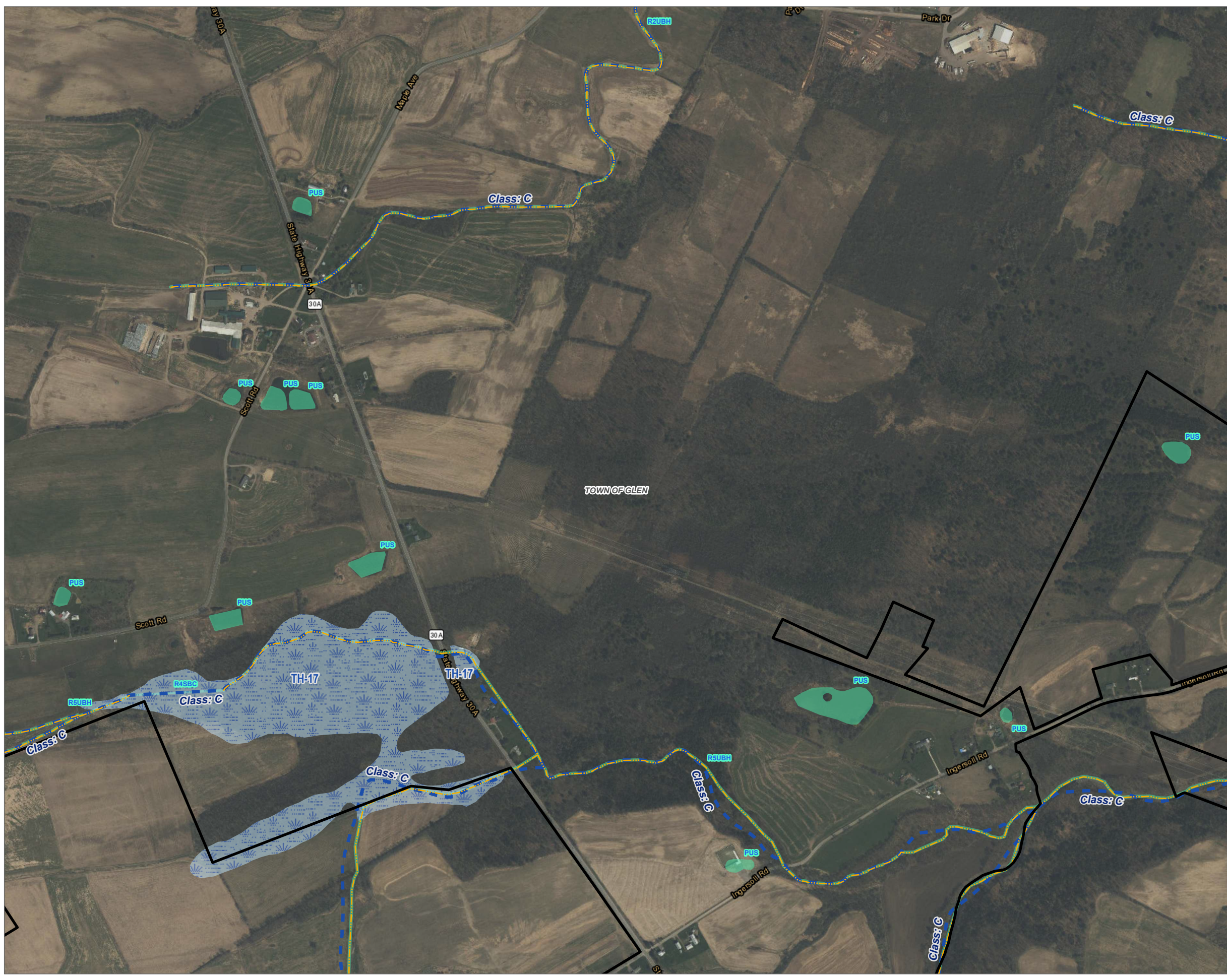
NOTES:
 1. THIS FIGURE IS DESIGNED TO BE VIEWED OR PRINTED IN COLOR AT 11X17.

BASE MAP: ESRI WORLD IMAGERY SERVICE (3/30/2022)
 DATA SOURCES: ESRI, NHD, NYSGIS, NYSDEC, NWI, TRC



PROJECT:		CONNECTGEN MONTGOMERY COUNTY LLC MILL POINT SOLAR I TOWN OF GLEN, MONTGOMERY COUNTY, NY	
TITLE:		MAPPED WETLANDS AND SURFACE WATERS	
DRAWN BY:	A. KAILAS	PROJ. NO.:	411360
CHECKED BY:	C. PEARCE	FIGURE 13-2 MAP 2 OF 7	
APPROVED BY:	T. KONDAK		
DATE:	JANUARY 2024		
		3 CORPORATE DRIVE SUITE 202 CLIFTON PARK, NY 12065 PHONE: 518.348.1190	
		FILE: MILL_POINT_94C_EX_13APRX	

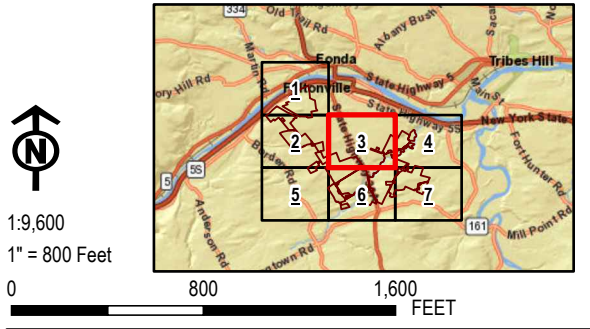
Coordinate System: NAD 1983 StatePlane New York East FIPS 3101 Feet; Map Rotation: 0
 - Saved By: AKAILAS on 1/22/2024 10:49:46 AM; File Path: T:\H-PROJECTS\CONNECTGEN+11360\Mill_Point_Solar1\Map\2-APR\X\Mill_Point_94C_EX_13.aprx; Layout Name: MP_Fig13_2_Mapped_Wetlands_Surface_Waters-11x17L



- FACILITY SITE
- WATERBODIES (NHD)
- WATERBODIES (NYSDEC)
- WETLANDS (NYSDEC)
- WETLANDS (NWI)
- TOWN BOUNDARY
- VILLAGE BOUNDARY

NOTES:
 1. THIS FIGURE IS DESIGNED TO BE VIEWED OR PRINTED IN COLOR AT 11X17.

BASE MAP: ESRI WORLD IMAGERY SERVICE (3/30/2022)
 DATA SOURCES: ESRI, NHD, NYSGIS, NYSDEC, NWI, TRC



PROJECT:		CONNECTGEN MONTGOMERY COUNTY LLC MILL POINT SOLAR I TOWN OF GLEN, MONTGOMERY COUNTY, NY	
TITLE:		MAPPED WETLANDS AND SURFACE WATERS	
DRAWN BY:	A. KAILAS	PROJ. NO.:	411360
CHECKED BY:	C. PEARCE	FIGURE 13-2 MAP 3 OF 7	
APPROVED BY:	T. KONDAK		
DATE:	JANUARY 2024		
		3 CORPORATE DRIVE SUITE 202 CLIFTON PARK, NY 12065 PHONE: 518.348.1190	
FILE:	MILL_POINT_94C_EX_13APRX		

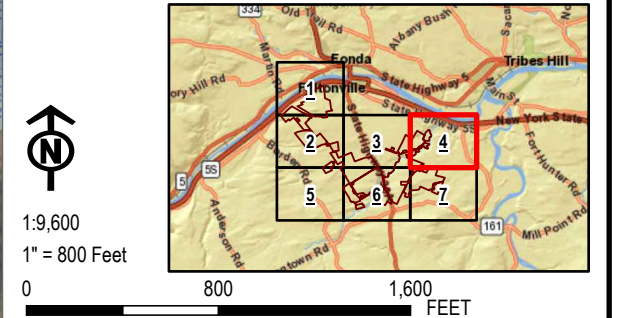
Coordinate System: NAD 1983 StatePlane New York East FIPS 3101 Feet; Map Rotation: 0
 Saved By: AKAILAS on 1/22/2024 10:48:46 AM; File Path: T:\H-PROJECTS\CONNECTGEN\11360\Mill_Point_Solar1\Map\13-2_Mapped_Wetlands_Surface_Waters_11x17L
 Layout Name: MP_Fig13_2_Mapped_Wetlands_Surface_Waters_11x17L



- FACILITY SITE
- WATERBODIES (NHD)
- WATERBODIES (NYSDEC)
- WETLANDS (NYSDEC)
- WETLANDS (NWI)
- TOWN BOUNDARY
- VILLAGE BOUNDARY

NOTES:
 1. THIS FIGURE IS DESIGNED TO BE VIEWED OR PRINTED IN COLOR AT 11X17.

BASE MAP: ESRI WORLD IMAGERY SERVICE (3/30/2022)
 DATA SOURCES: ESRI, NHD, NYSGIS, NYSDEC, NWI, TRC



PROJECT:		CONNECTGEN MONTGOMERY COUNTY LLC MILL POINT SOLAR I TOWN OF GLEN, MONTGOMERY COUNTY, NY	
TITLE: MAPPED WETLANDS AND SURFACE WATERS			
DRAWN BY:	A. KAILAS	PROJ. NO.:	411360
CHECKED BY:	C. PEARCE	FIGURE 13-2 MAP 4 OF 7	
APPROVED BY:	T. KONDAK		
DATE:	JANUARY 2024		
		3 CORPORATE DRIVE SUITE 202 CLIFTON PARK, NY 12065 PHONE: 518.348.1190	
FILE:	MILL_POINT_94C_EX_13APRX		

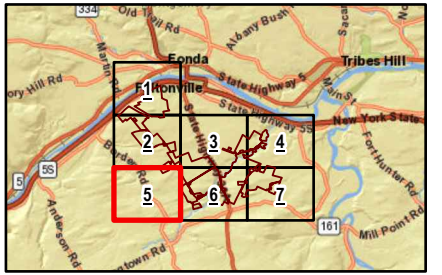
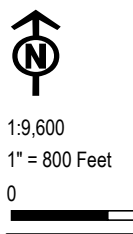
Coordinate System: NAD 1983 StatePlane New York East FIPS 3101 Feet; Map Rotation: 0
 - Saved By: AKAILAS on: 1/22/2024 10:48:46 AM; File Path: T:\H-PROJECTS\CONNECTGEN\11360\Mill_Point_94C_13.aprx; Layout Name: MP_Fig13_2_Mapped_Wetlands_Surface_Waters_11x17L



- FACILITY SITE
- WATERBODIES (NHD)
- WATERBODIES (NYSDEC)
- WETLANDS (NYSDEC)
- WETLANDS (NWI)
- TOWN BOUNDARY
- VILLAGE BOUNDARY

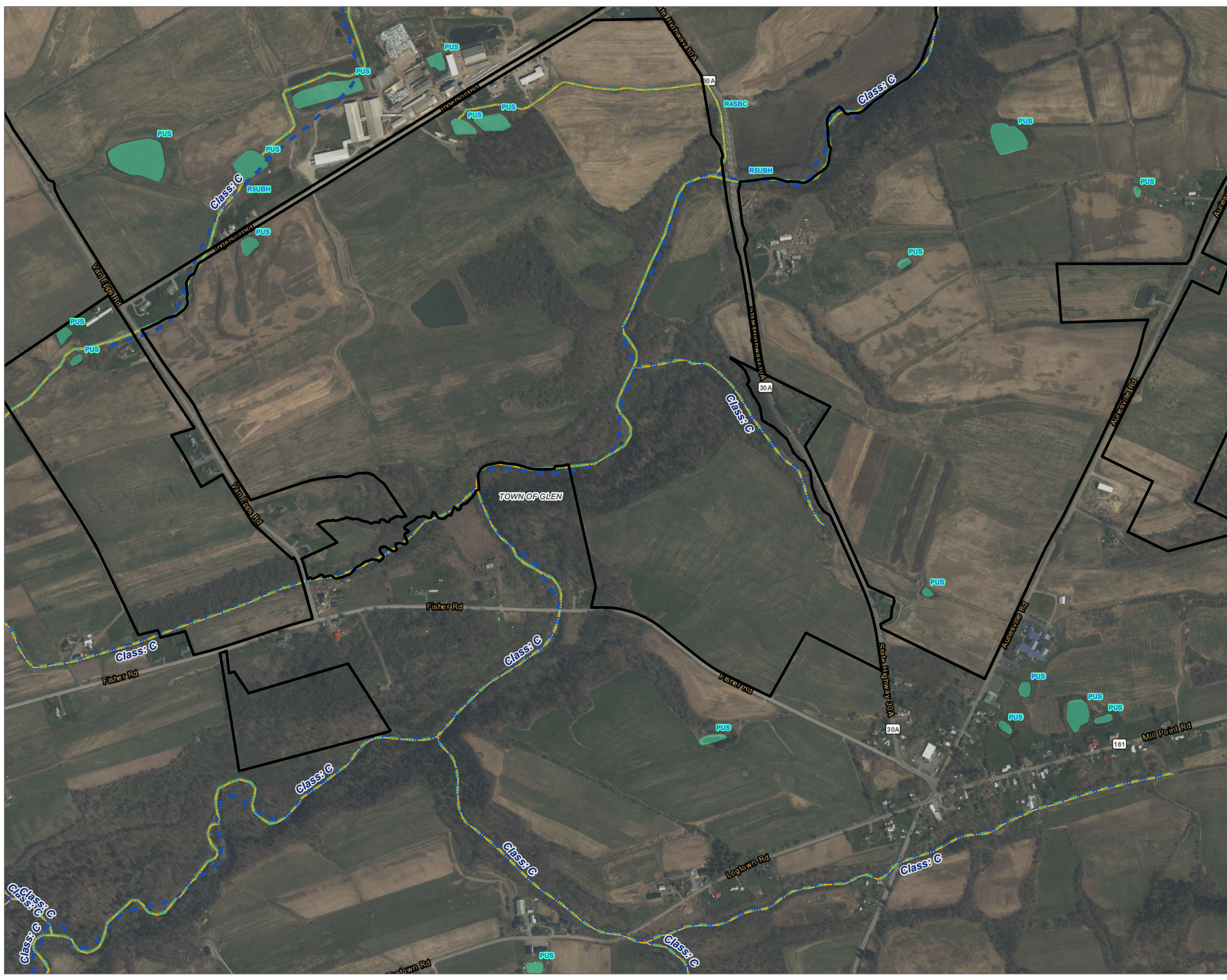
NOTES:
 1. THIS FIGURE IS DESIGNED TO BE VIEWED OR PRINTED IN COLOR AT 11X17.

BASE MAP: ESRI WORLD IMAGERY SERVICE (3/30/2022)
 DATA SOURCES: ESRI, NHD, NYSGIS, NYSDEC, NWI, TRC



PROJECT: CONNECTGEN MONTGOMERY COUNTY LLC MILL POINT SOLAR I TOWN OF GLEN, MONTGOMERY COUNTY, NY	
TITLE: MAPPED WETLANDS AND SURFACE WATERS	
DRAWN BY: A. KAILAS	PROJ. NO.: 411360
CHECKED BY: C. PEARCE	FIGURE 13-2 MAP 5 OF 7
APPROVED BY: T. KONDAK	
DATE: JANUARY 2024	
3 CORPORATE DRIVE SUITE 202 CLIFTON PARK, NY 12065 PHONE: 518.348.1190	
FILE:	MILL_POINT_94C_EX_13.APRX

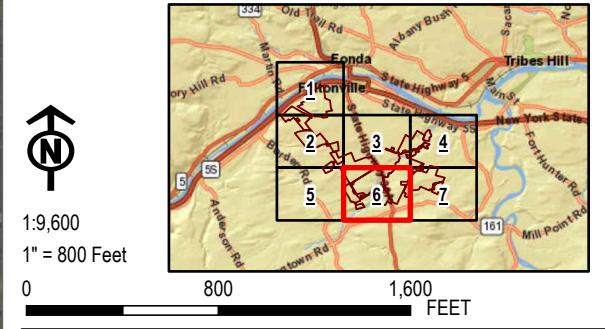
Coordinate System: NAD 1983 StatePlane New York East FIPS 3101 Feet; Map Rotation: 0
 - Saved By: AKAILAS on 1/22/2024, 10:49:46 AM; File Path: T:\H-PROJECTS\CONNECTGEN\11360\Mill_Point_Solar1\Map\13-2_Mapped_Wetlands_Surface_Waters_11x17.mxd; Layout Name: MP_Fig13_2_Mapped_Wetlands_Surface_Waters_11x17L



- FACILITY SITE
- WATERBODIES (NHD)
- WATERBODIES (NYSDEC)
- WETLANDS (NYSDEC)
- WETLANDS (NWI)
- TOWN BOUNDARY
- VILLAGE BOUNDARY

NOTES:
 1. THIS FIGURE IS DESIGNED TO BE VIEWED OR PRINTED IN COLOR AT 11X17.

BASE MAP: ESRI WORLD IMAGERY SERVICE (3/30/2022)
 DATA SOURCES: ESRI, NHD, NYSGIS, NYSDEC, NWI, TRC



PROJECT: CONNECTGEN MONTGOMERY COUNTY LLC MILL POINT SOLAR I TOWN OF GLEN, MONTGOMERY COUNTY, NY	
TITLE: MAPPED WETLANDS AND SURFACE WATERS	
DRAWN BY: A. KAILAS	PROJ. NO.: 411360
CHECKED BY: C. PEARCE	FIGURE 13-2 MAP 6 OF 7
APPROVED BY: T. KONDAK	
DATE: JANUARY 2024	
3 CORPORATE DRIVE SUITE 202 CLIFTON PARK, NY 12065 PHONE: 518.348.1190	
FILE:	MILL_POINT_94C_EX_13APRX

Coordinate System: NAD 1983 StatePlane New York East FIPS 3101 Feet; Map Rotation: 0
 - Saved By: AKAILAS on 1/22/2024 10:49:46 AM; File Path: T:\H-PROJECTS\CONNECTGEN\11360\Mill_Point_Solar1\Map\13-2_Mapped_Wetlands_Surface_Waters_11x17L

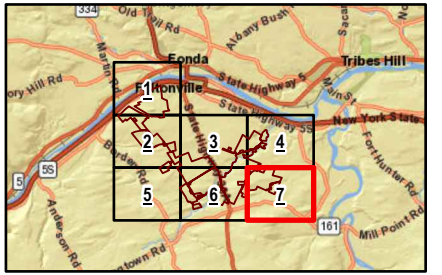


- FACILITY SITE
- WATERBODIES (NHD)
- WATERBODIES (NYSDEC)
- WETLANDS (NYSDEC)
- WETLANDS (NWI)
- TOWN BOUNDARY
- VILLAGE BOUNDARY

NOTES:
 1. THIS FIGURE IS DESIGNED TO BE VIEWED OR PRINTED IN COLOR AT 11X17.

BASE MAP: ESRI WORLD IMAGERY SERVICE (3/30/2022)
 DATA SOURCES: ESRI, NHD, NYSGIS, NYSDEC, NWI, TRC

1:9,600
 1" = 800 Feet
 0 800 1,600 FEET



PROJECT: CONNECTGEN MONTGOMERY COUNTY LLC MILL POINT SOLAR I TOWN OF GLEN, MONTGOMERY COUNTY, NY	
TITLE: MAPPED WETLANDS AND SURFACE WATERS	
DRAWN BY: A. KAILAS	PROJ. NO.: 411360
CHECKED BY: C. PEARCE	FIGURE 13-2 MAP 7 OF 7
APPROVED BY: T. KONDAK	
DATE: JANUARY 2024	
3 CORPORATE DRIVE SUITE 202 CLIFTON PARK, NY 12065 PHONE: 518.348.1190	
FILE:	MILL_POINT_94C_EX_13APRX