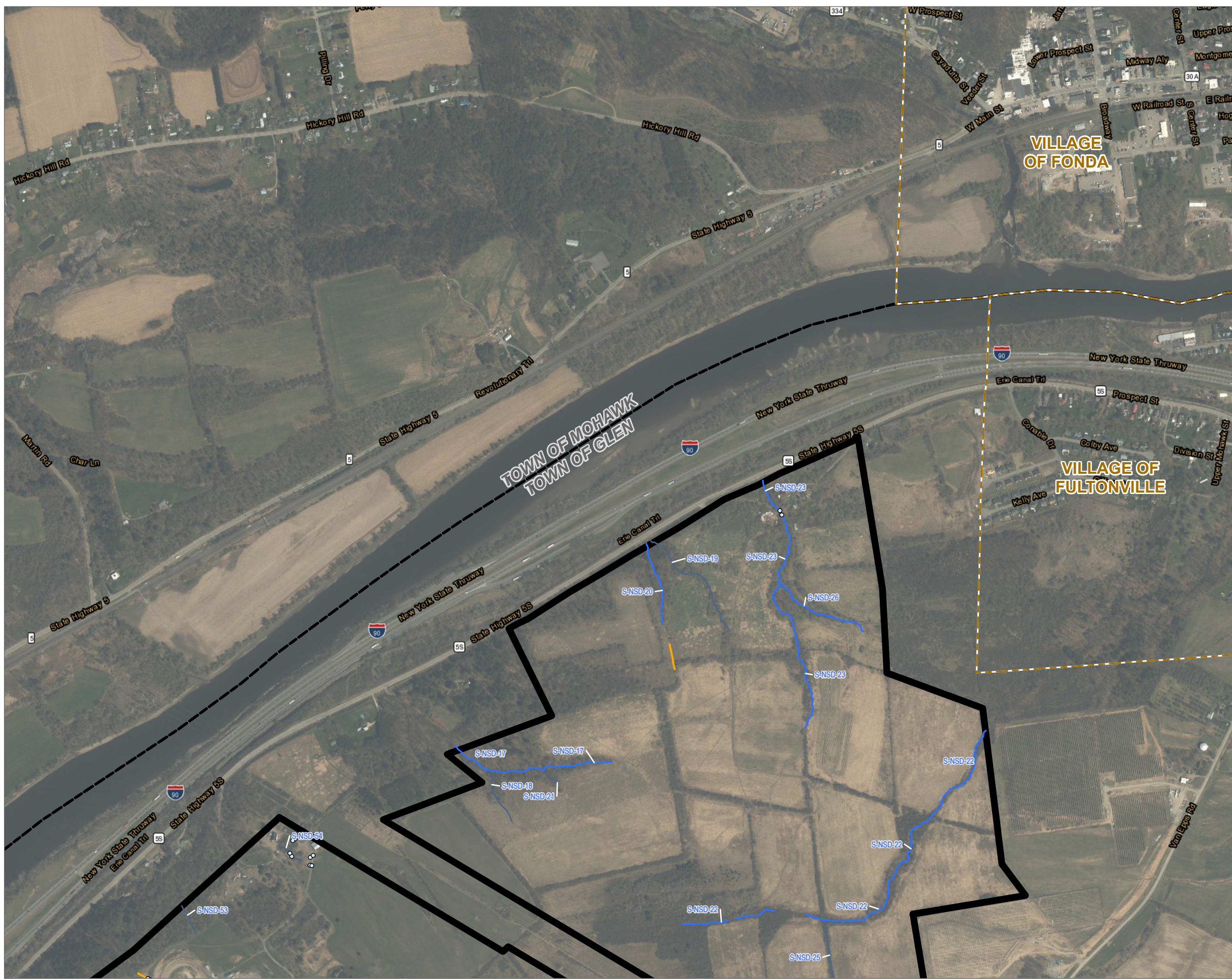
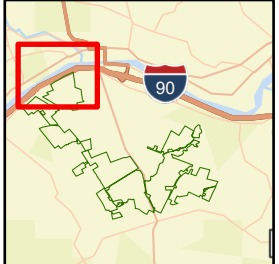


Coordinate System: NAD 1983 StatePlane New York East FIPS 3101 Feet; Map Rotation: 0
 - Saved By: AKAILAS on 1/22/2024, 10:49:46 AM; File Path: T:\H-PROJECTS\CONNECTGEN\11360\Mill_Point_94C_13.aprx; Layout Name: MP_Fig13_3_Delineated_Surface_Waters_T1X.T1L



- CULVERT LOCATIONS
- ~ DRAINAGE DITCH
- DELINEATED STREAM - JURISDICTIONAL STATUS
 - ~ NON-JURISDICTIONAL
 - ~ USACE
 - ~ USACE/STATE
- DELINEATED SURFACE WATER - JURISDICTIONAL STATUS
 - USACE
 - USACE/STATE
- FACILITY SITE
- - - VILLAGE BOUNDARY
- - - TOWN BOUNDARY

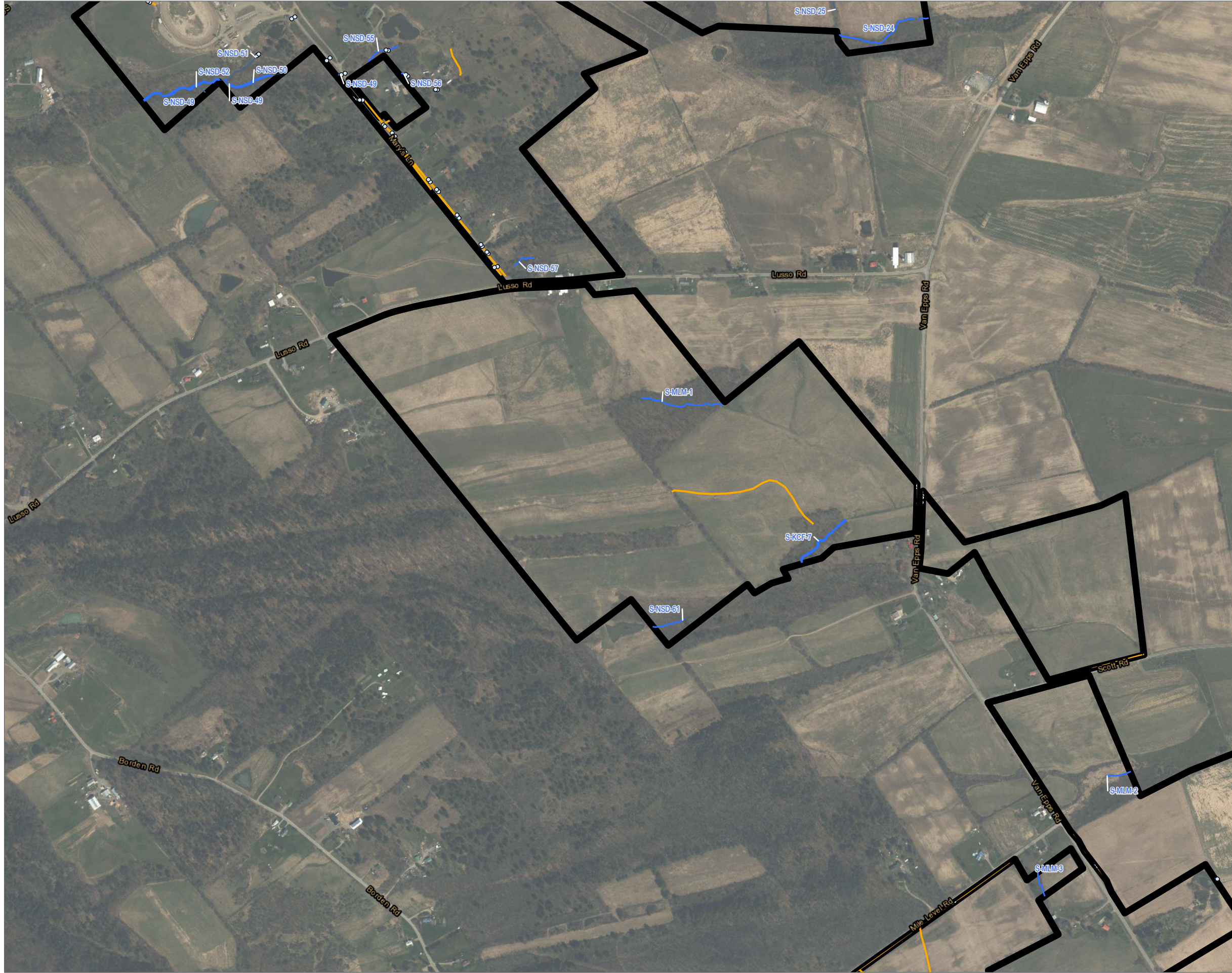
BASE MAP:
 ESRI WORLD IMAGERY BASEMAP - 3/30/2022.
 DATA SOURCES:
 ESRI, USGS, NYSGIS, MONTGOMERY COUNTY, TOWN OF GLEN, TRC.



1:9,600
 1" = 800'
 0 400 800 FEET

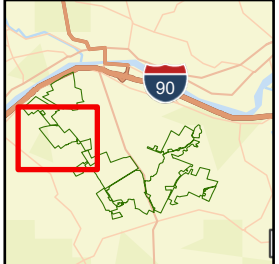
PROJECT: CONNECTGEN MONTGOMERY COUNTY LLC MILL POINT SOLAR I TOWN OF GLEN, MONTGOMERY COUNTY, NY	
TITLE: DELINEATED SURFACE WATERS	
DRAWN BY: A. KAILAS	PROJ. NO.: 411360.1000.0000
CHECKED BY: C. PEARCE	FIGURE 13-3 MAP 1 OF 7
APPROVED BY: T. KONDAK	
DATE: JANUARY 2024	
3 CORPORATE DRIVE SUITE 202 CLIFTON PARK, NY 12065 PHONE: 518.348.1190	
FILE:	Mill_Point_94C_13.aprx

Coordinate System: NAD 1983 StatePlane New York East FIPS 3101 Feet; Map Rotation: 0
 -- Saved By: AKAILAS on 1/22/2024 10:49:46 AM; File Path: T:\H-PROJECTS\ConnectGen+11360\Mill_Point_Solar\2-APR\X\Mill_Point_Solar\13_3_Delineated_Surface_Waters_T1X.T1L



- CULVERT LOCATIONS
- DRAINAGE DITCH
- DELINEATED STREAM - JURISDICTIONAL STATUS
- NON-JURISDICTIONAL
- USACE
- USACE/STATE
- DELINEATED SURFACE WATER - JURISDICTIONAL STATUS
- USACE
- USACE/STATE
- ▭ FACILITY SITE
- - - VILLAGE BOUNDARY
- - - TOWN BOUNDARY

BASE MAP:
 ESRI WORLD IMAGERY BASEMAP - 3/30/2022.
 DATA SOURCES:
 ESRI, USGS, NYSGIS, MONTGOMERY COUNTY, TOWN OF GLEN, TRC.



1:9,600
 1" = 800'
 0 400 800 FEET

PROJECT: **CONNECTGEN MONTGOMERY COUNTY LLC
 MILL POINT SOLAR I
 TOWN OF GLEN, MONTGOMERY COUNTY, NY**

TITLE:
DELINEATED SURFACE WATERS

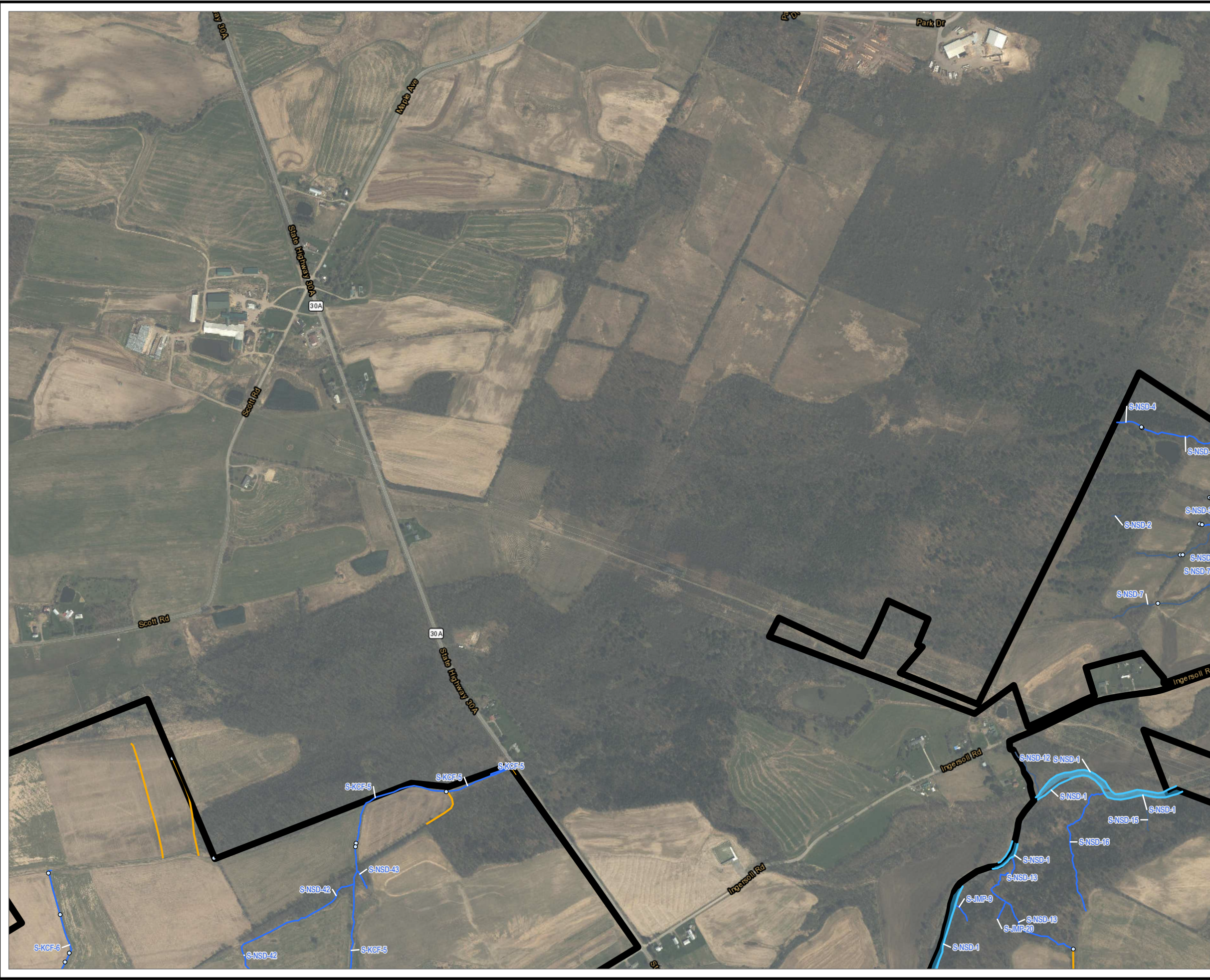
DRAWN BY:	A. KAILAS	PROJ. NO.:	411360.1000.0000
CHECKED BY:	C. PEARCE	FIGURE 13-3 MAP 2 OF 7	
APPROVED BY:	T. KONDAK		
DATE:	JANUARY 2024		

TRC

3 CORPORATE DRIVE
 SUITE 202
 CLIFTON PARK, NY 12065
 PHONE: 518.348.1190

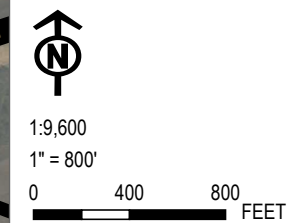
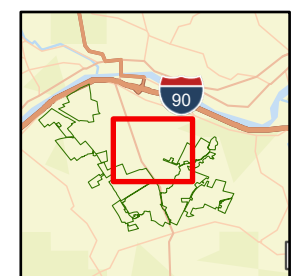
FILE: Mill_Point_94C_Ex_13.aprx

Coordinate System: NAD 1983 StatePlane New York East FIPS 3101 Feet; Map Rotation: 0
 Saved By: AKAILAS on 1/22/2024 10:49:46 AM; File Path: T:\H-PROJECTS\CONNECTGEN\11360\Mill_Point_Solar\13_3_Delineated_Surface_Waters_T1X.T1L



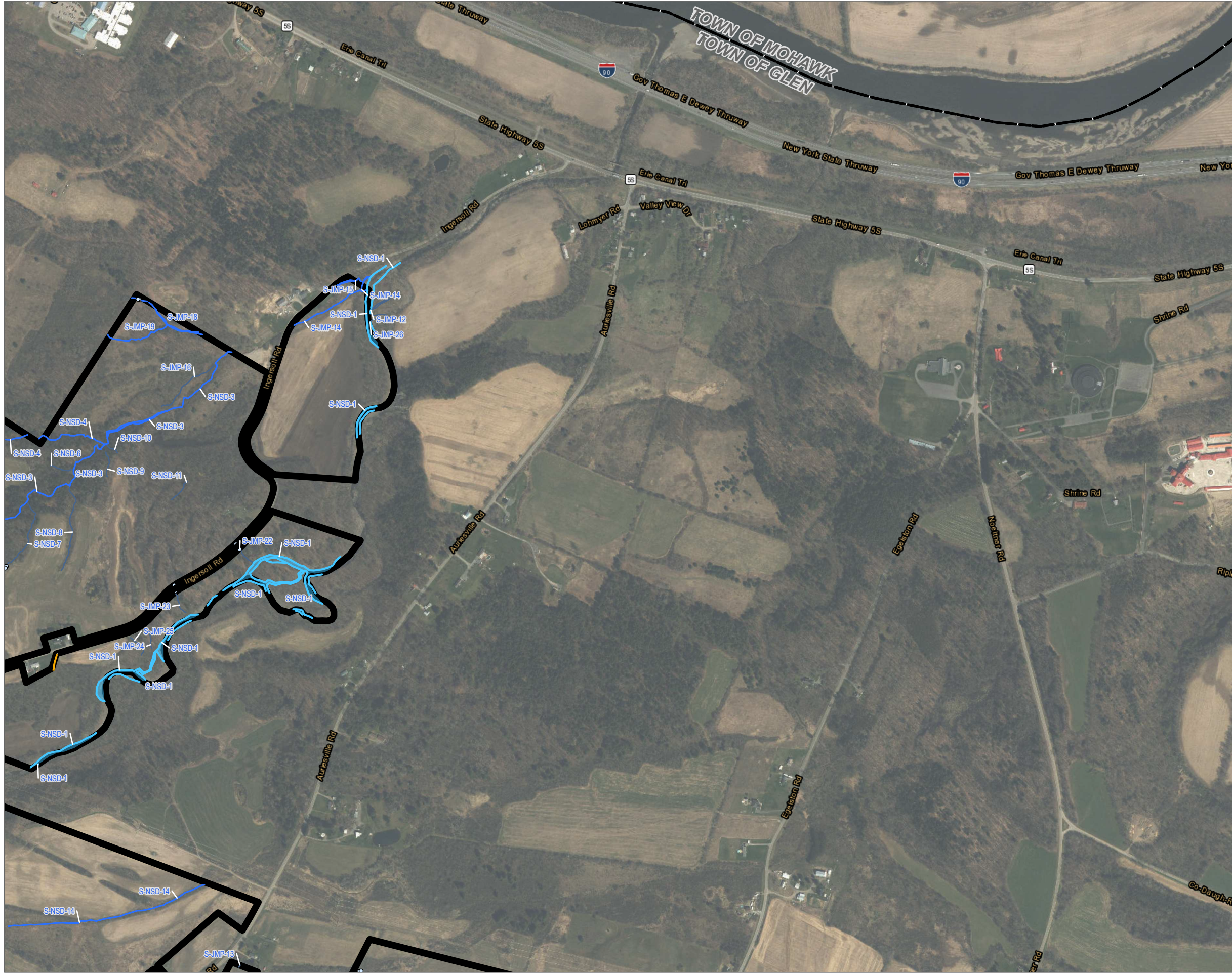
- CULVERT LOCATIONS
- ~ DRAINAGE DITCH
- DELINEATED STREAM - JURISDICTIONAL STATUS
 - ~ NON-JURISDICTIONAL
 - ~ USACE
 - ~ USACE/STATE
- DELINEATED SURFACE WATER - JURISDICTIONAL STATUS
 - USACE
 - USACE/STATE
- ▭ FACILITY SITE
- - - VILLAGE BOUNDARY
- - - TOWN BOUNDARY

BASE MAP:
 ESRI WORLD IMAGERY BASEMAP - 3/30/2022.
 DATA SOURCES:
 ESRI, USGS, NYSGIS, MONTGOMERY COUNTY, TOWN OF GLEN, TRC.



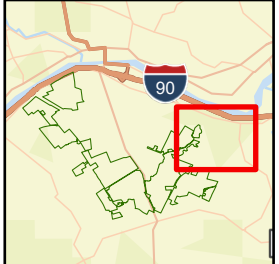
PROJECT: CONNECTGEN MONTGOMERY COUNTY LLC MILL POINT SOLAR I TOWN OF GLEN, MONTGOMERY COUNTY, NY	
TITLE: DELINEATED SURFACE WATERS	
DRAWN BY: A. KAILAS	PROJ. NO.: 411360.1000.0000
CHECKED BY: C. PEARCE	FIGURE 13-3 MAP 3 OF 7
APPROVED BY: T. KONDAK	
DATE: JANUARY 2024	
3 CORPORATE DRIVE SUITE 202 CLIFTON PARK, NY 12065 PHONE: 518.348.1190	
FILE:	Mill_Point_94C_Ex_13.aprx

Coordinate System: NAD 1983 StatePlane New York East FIPS 3101 Feet; Map Rotation: 0
 Saved By: AKAILAS on 1/22/2024 10:49:46 AM; File Path: T:\PROJECTS\CONNECTGEN\11360\Mill_Point_Solar\2-APR\X\Mill_Point_Solar\Surface_Waters_T1X.T1L
 Layout Name: MP_Fig13_3_Delineated_Surface_Waters_T1X.T1L



- CULVERT LOCATIONS
- ~ DRAINAGE DITCH
- DELINEATED STREAM - JURISDICTIONAL STATUS
 - ~ NON-JURISDICTIONAL
 - ~ USACE
 - ~ USACE/STATE
- DELINEATED SURFACE WATER - JURISDICTIONAL STATUS
 - USACE
 - USACE/STATE
- ▭ FACILITY SITE
- - - VILLAGE BOUNDARY
- - - TOWN BOUNDARY

BASE MAP:
 ESRI WORLD IMAGERY BASEMAP - 3/30/2022.
 DATA SOURCES:
 ESRI, USGS, NYSGIS, MONTGOMERY COUNTY, TOWN OF GLEN, TRC.



1:9,600
 1" = 800'
 0 400 800 FEET

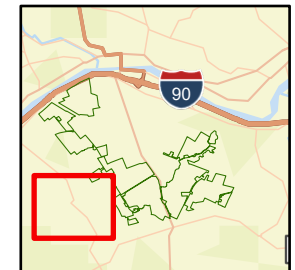
PROJECT: CONNECTGEN MONTGOMERY COUNTY LLC MILL POINT SOLAR I TOWN OF GLEN, MONTGOMERY COUNTY, NY	
TITLE: DELINEATED SURFACE WATERS	
DRAWN BY: A. KAILAS	PROJ. NO.: 411360.1000.0000
CHECKED BY: C. PEARCE	FIGURE 13-3 MAP 4 OF 7
APPROVED BY: T. KONDAK	
DATE: JANUARY 2024	
TRC	
3 CORPORATE DRIVE SUITE 202 CLIFTON PARK, NY 12065 PHONE: 518.348.1190	
FILE: Mill_Point_94C_Ex_13.aprx	

Coordinate System: NAD 1983 StatePlane New York East FIPS 3101 Feet; Map Rotation: 0
 -- Saved By: AKAILAS on 1/22/2024 10:48:46 AM; File Path: T:\H-PROJECTS\CONNECTGEN\11360\Mill_Point_Solar\2-APR\X\Mill_Point_94C_Ex_13.aprx; Layout Name: MP_Fig13_3_Delineated_Surface_Waters_T1X.T1L



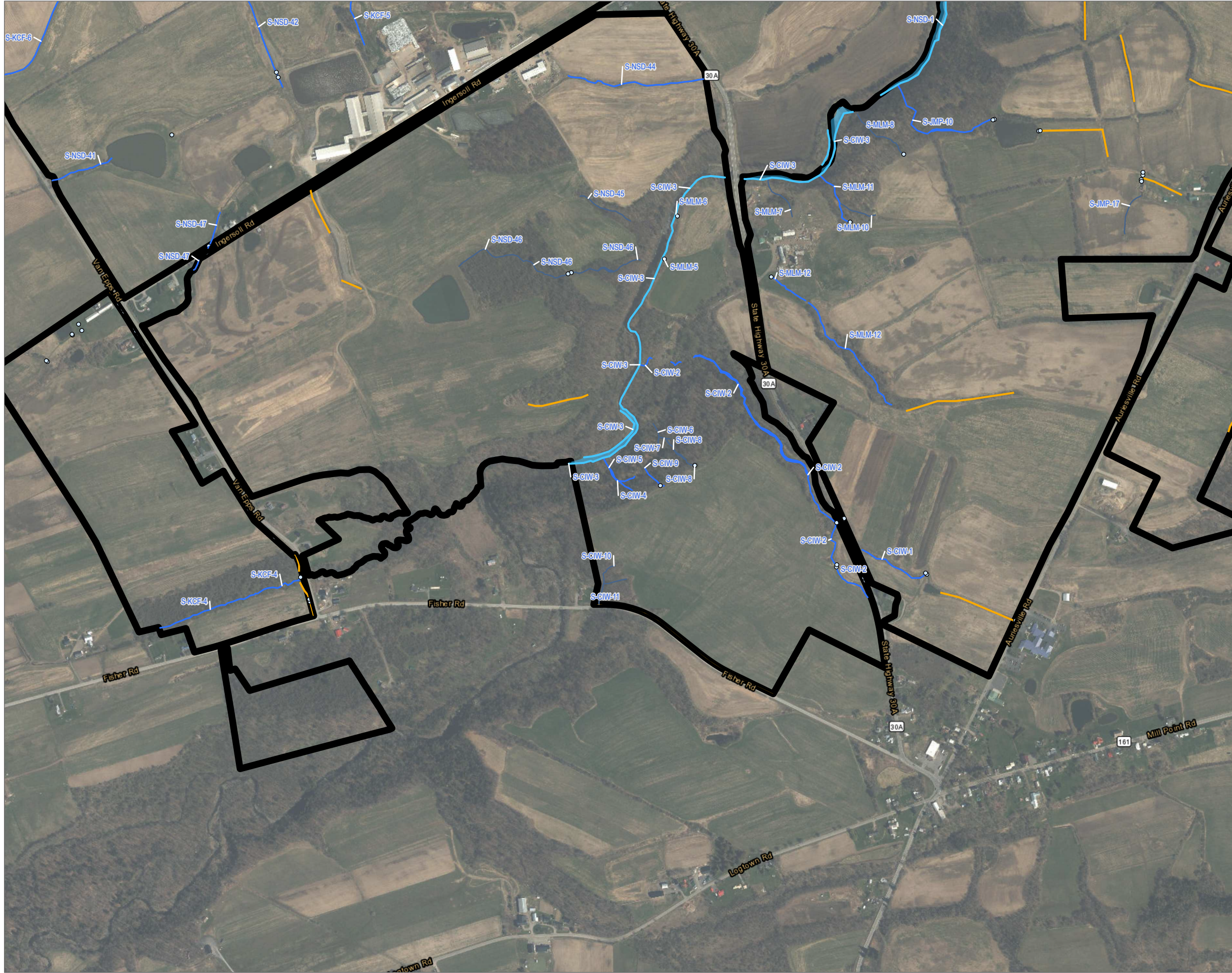
- CULVERT LOCATIONS
- ~ DRAINAGE DITCH
- DELINEATED STREAM - JURISDICTIONAL STATUS
 - ~ NON-JURISDICTIONAL
 - ~ USACE
 - ~ USACE/STATE
- DELINEATED SURFACE WATER - JURISDICTIONAL STATUS
 - USACE
 - USACE/STATE
- ▭ FACILITY SITE
- - - VILLAGE BOUNDARY
- - - TOWN BOUNDARY

BASE MAP:
 ESRI WORLD IMAGERY BASEMAP - 3/30/2022.
 DATA SOURCES:
 ESRI, USGS, NYSGIS, MONTGOMERY COUNTY, TOWN OF GLEN, TRC.



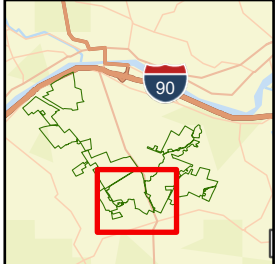
1:9,600
 1" = 800'
 0 400 800 FEET

PROJECT: CONNECTGEN MONTGOMERY COUNTY LLC MILL POINT SOLAR I TOWN OF GLEN, MONTGOMERY COUNTY, NY	
TITLE: DELINEATED SURFACE WATERS	
DRAWN BY: A. KAILAS	PROJ. NO.: 411360.1000.0000
CHECKED BY: C. PEARCE	FIGURE 13-3 MAP 5 OF 7
APPROVED BY: T. KONDAK	
DATE: JANUARY 2024	
3 CORPORATE DRIVE SUITE 202 CLIFTON PARK, NY 12065 PHONE: 518.348.1190	
FILE:	Mill_Point_94C_Ex_13.aprx



- CULVERT LOCATIONS
- DRAINAGE DITCH
- DELINEATED STREAM - JURISDICTIONAL STATUS
- NON-JURISDICTIONAL
- USACE
- USACE/STATE
- DELINEATED SURFACE WATER - JURISDICTIONAL STATUS
- USACE
- USACE/STATE
- ▭ FACILITY SITE
- - - VILLAGE BOUNDARY
- - - TOWN BOUNDARY

BASE MAP:
 ESRI WORLD IMAGERY BASEMAP - 3/30/2022.
 DATA SOURCES:
 ESRI, USGS, NYSGIS, MONTGOMERY COUNTY, TOWN OF GLEN, TRC.



1:9,600
 1" = 800'
 0 400 800 FEET

PROJECT: **CONNECTGEN MONTGOMERY COUNTY LLC
 MILL POINT SOLAR I
 TOWN OF GLEN, MONTGOMERY COUNTY, NY**

TITLE:
DELINEATED SURFACE WATERS

DRAWN BY:	A. KAILAS	PROJ. NO.:	411360.1000.0000
CHECKED BY:	C. PEARCE		
APPROVED BY:	T. KONDAK		
DATE:	JANUARY 2024		

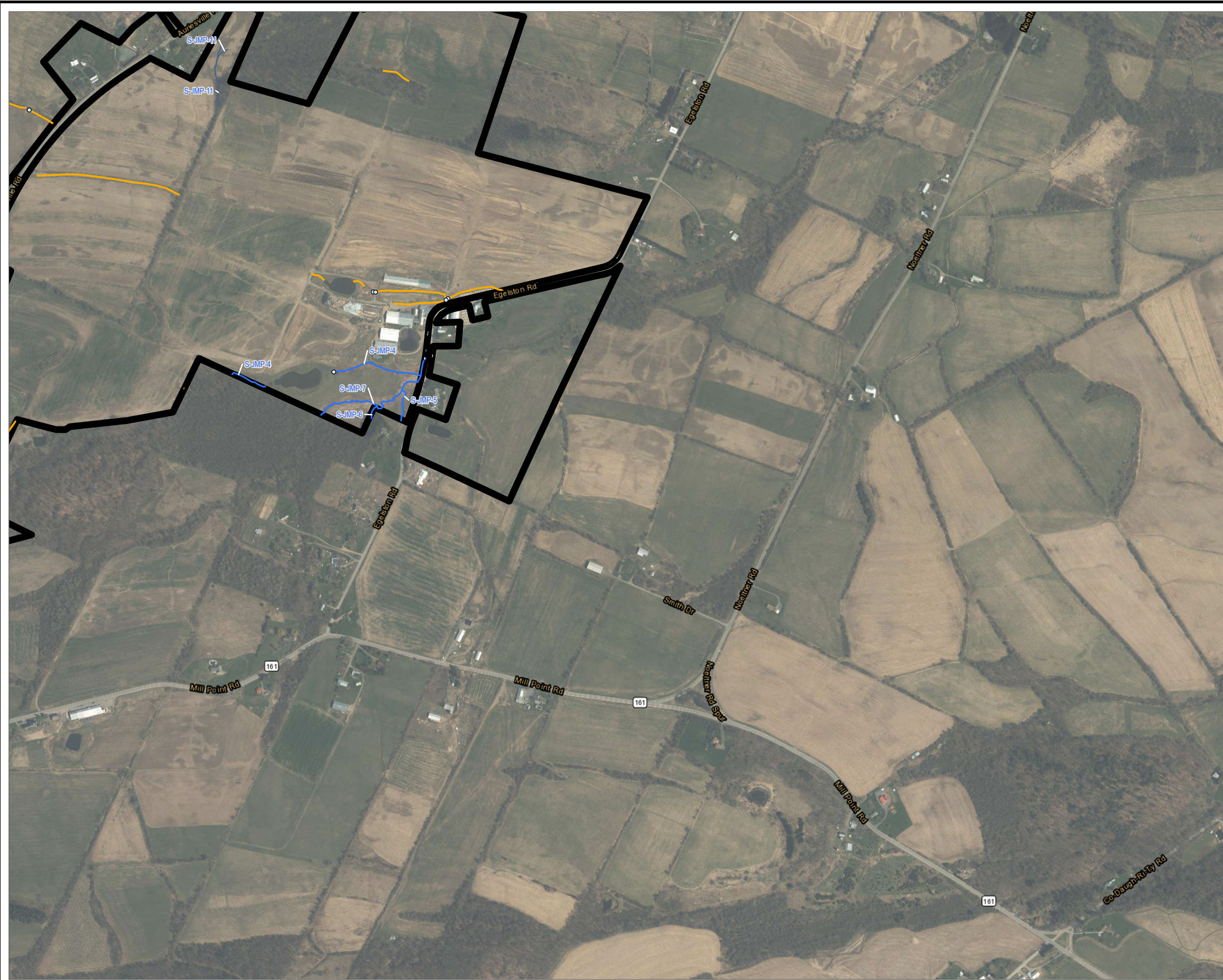
TRC
 3 CORPORATE DRIVE
 SUITE 202
 CLIFTON PARK, NY 12065
 PHONE: 518.348.1190

FILE: Mill_Point_94C_Ex_13.aprx

Coordinate System: NAD 1983 StatePlane New York East FIPS 3101 Feet; Map Rotation: 0
 - Saved By: AKAILAS on 1/22/2024 10:49:46 AM; File Path: T:\H-PROJECTS\CONNECTGEN\11360\Mill_Point_Solar1\Map\13_3_Delineated_Surface_Waters_11x17L
 Layout Name: MP_Fig13_3_Delineated_Surface_Waters_11x17L

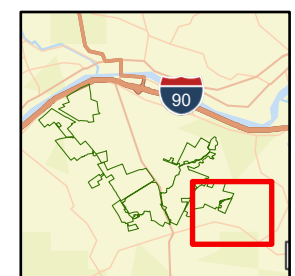
FIGURE 13-3
 MAP 6 OF 7

Coordinate System: NAD 1983 StatePlane New York East FIPS 3101 Feet; Map Rotation: 0
 -- Saved By: AKAILAS on 1/22/2024 10:49:46 AM; File Path: T:\H-PROJECTS\ConnectGen\11360\Mill_Point_Solar\13.3_Delineated_Surface_Waters_T1X.T1L



- CULVERT LOCATIONS
- DRAINAGE DITCH
- DELINEATED STREAM - JURISDICTIONAL STATUS
- NON-JURISDICTIONAL
- USACE
- USACE/STATE
- DELINEATED SURFACE WATER - JURISDICTIONAL STATUS
- USACE
- USACE/STATE
- ▭ FACILITY SITE
- ▭ VILLAGE BOUNDARY
- ▭ TOWN BOUNDARY

BASE MAP:
 ESRI WORLD IMAGERY BASEMAP - 3/30/2022.
 DATA SOURCES:
 ESRI, USGS, NYSGIS, MONTGOMERY COUNTY, TOWN OF GLEN, TRC.



1:9,600
 1" = 800'
 0 400 800 FEET

PROJECT: CONNECTGEN MONTGOMERY COUNTY LLC MILL POINT SOLAR I TOWN OF GLEN, MONTGOMERY COUNTY, NY	
TITLE: DELINEATED SURFACE WATERS	
DRAWN BY: A. KAILAS	PROJ. NO.: 411360.1000.0000
CHECKED BY: C. PEARCE	FIGURE 13-3 MAP 7 OF 7
APPROVED BY: T. KONDAK	
DATE: JANUARY 2024	
3 CORPORATE DRIVE SUITE 202 CLIFTON PARK, NY 12065 PHONE: 518.348.1190	
FILE: Mill_Point_94C_Ex_13.aprx	