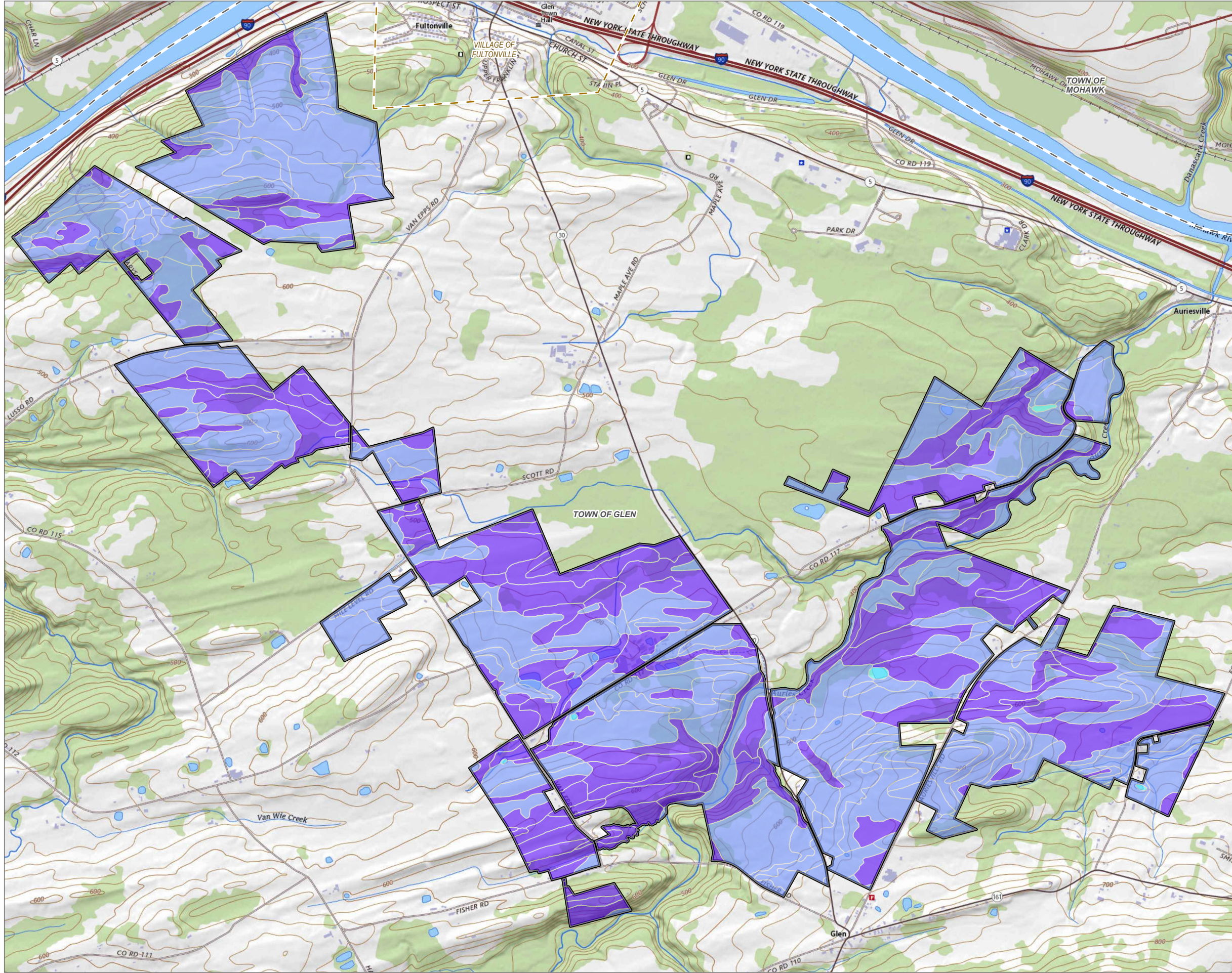


Coordinate System: NAD 1983 StatePlane New York East FIPS 3101 Feet, Map Rotation: 0
 - Saved By: AKAILAS on 1/22/2024 12:54:32 PM, File Path: T:\1-PROJECTS\ConnectGEN\411360\Mill_Point_Solar\2-A\FP\X\Mill_Point_94C_Exc_13.aprx, Layout Name: MP_Fig13_4_Depth_to_Groundwater_11X17L



- FACILITY SITE
- TOWN BOUNDARY
- VILLAGE BOUNDARY
- 0 CM
- 1 - 15 CM
- 16 - 38 CM
- 39 - 52 CM
- 53 - 61 CM
- GREATER THAN 62 CM

NOTES:
 1. THIS FIGURE IS DESIGNED TO BE VIEWED OR PRINTED IN COLOR AT 11X17.
 2. BEDROCK EXCEEDS 27.95' DEPTH IN FACILITY SITE.

BASE MAP: USGS, THE NATIONAL MAP TOPO, APRIL 2023.
 DATA SOURCES: ESRI, NRCS SSURGO, NYSGIS, TRC

1:24,000
 1" = 2,000'
 0 1,000 2,000 FEET

PROJECT:		CONNECTGEN MONTGOMERY COUNTY LLC MILL POINT SOLAR I TOWN OF GLEN, MONTGOMERY COUNTY, NY	
TITLE: DEPTH TO GROUNDWATER			
DRAWN BY:	A. KAILAS	PROJ. NO.:	411360
CHECKED BY:	C. PEARCE	FIGURE 13-4	
APPROVED BY:	T. KONDAK		
DATE:	JANUARY 2024		
		3 CORPORATE DRIVE SUITE 202 CLIFTON PARK, NY 12065 PHONE: 518.348.1190	
FILE:	Mill_Point_94C_Exc_13.aprx		