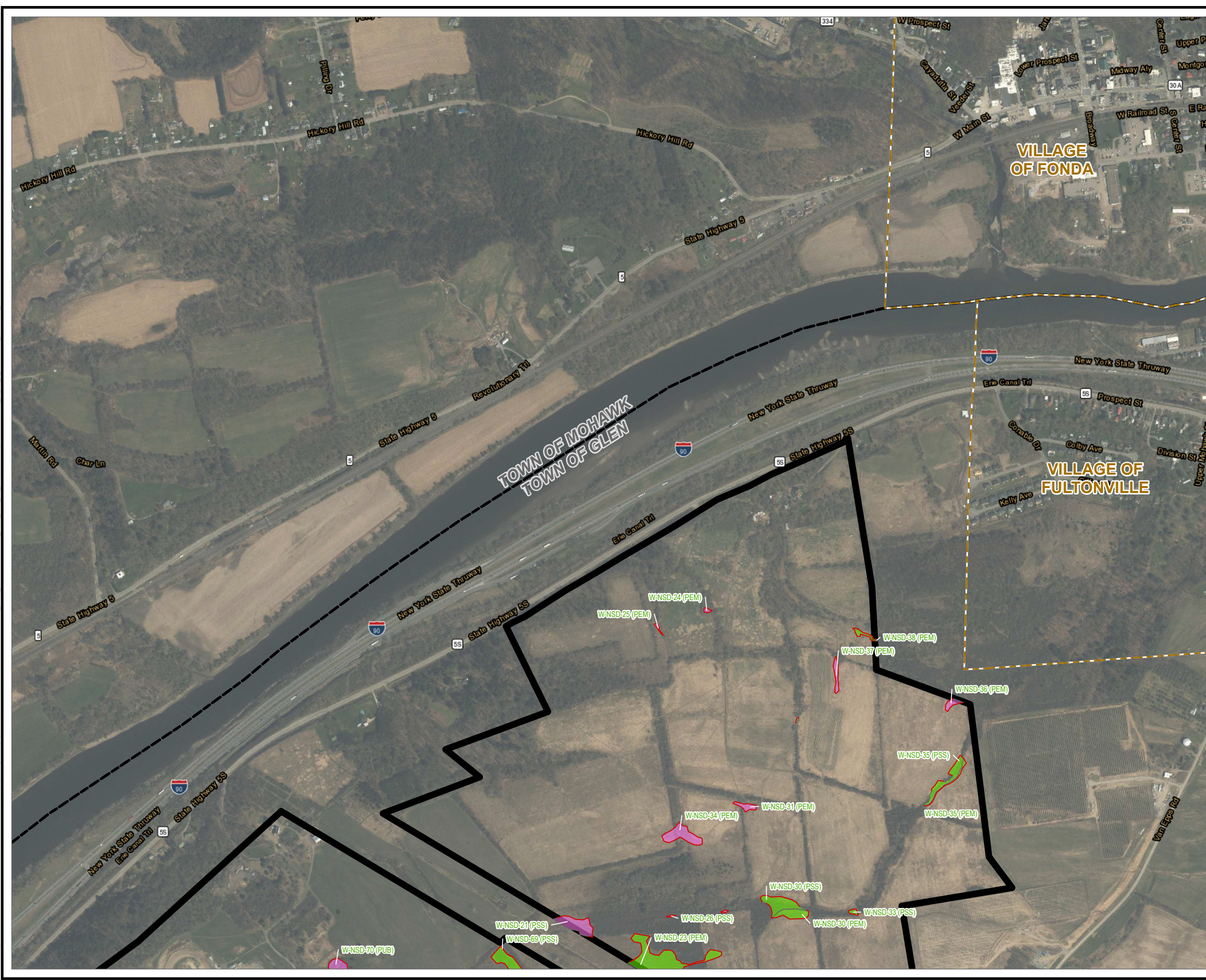


Coordinate System: NAD 1983 StatePlane New York East FIPS 3101 Feet; Map Rotation: 0  
-- Saved By: AKAILAS on 1/22/2024, 11:56:09 AM; File Path: h:\employees\sigarc\proj\1-PROJECTS\ConnectGen\411360-Mill\_Point\_Solar\1-PROJECTS\ConnectGen\411360-Mill\_Point\_Solar\1-PROJECTS\Delimited\_Wetlands\_Trx17L  
-- Layout Name: MP\_Fig14\_1\_Delimited\_Wetlands\_Trx17L



DELINEATED WETLAND BOUNDARY LINE  
DELINEATED WETLAND - JURISDICTIONAL STATUS

- USACE
- USACE/STATE
- NON-JURISDICTIONAL
- FACILITY SITE
- VILLAGE BOUNDARY
- TOWN BOUNDARY

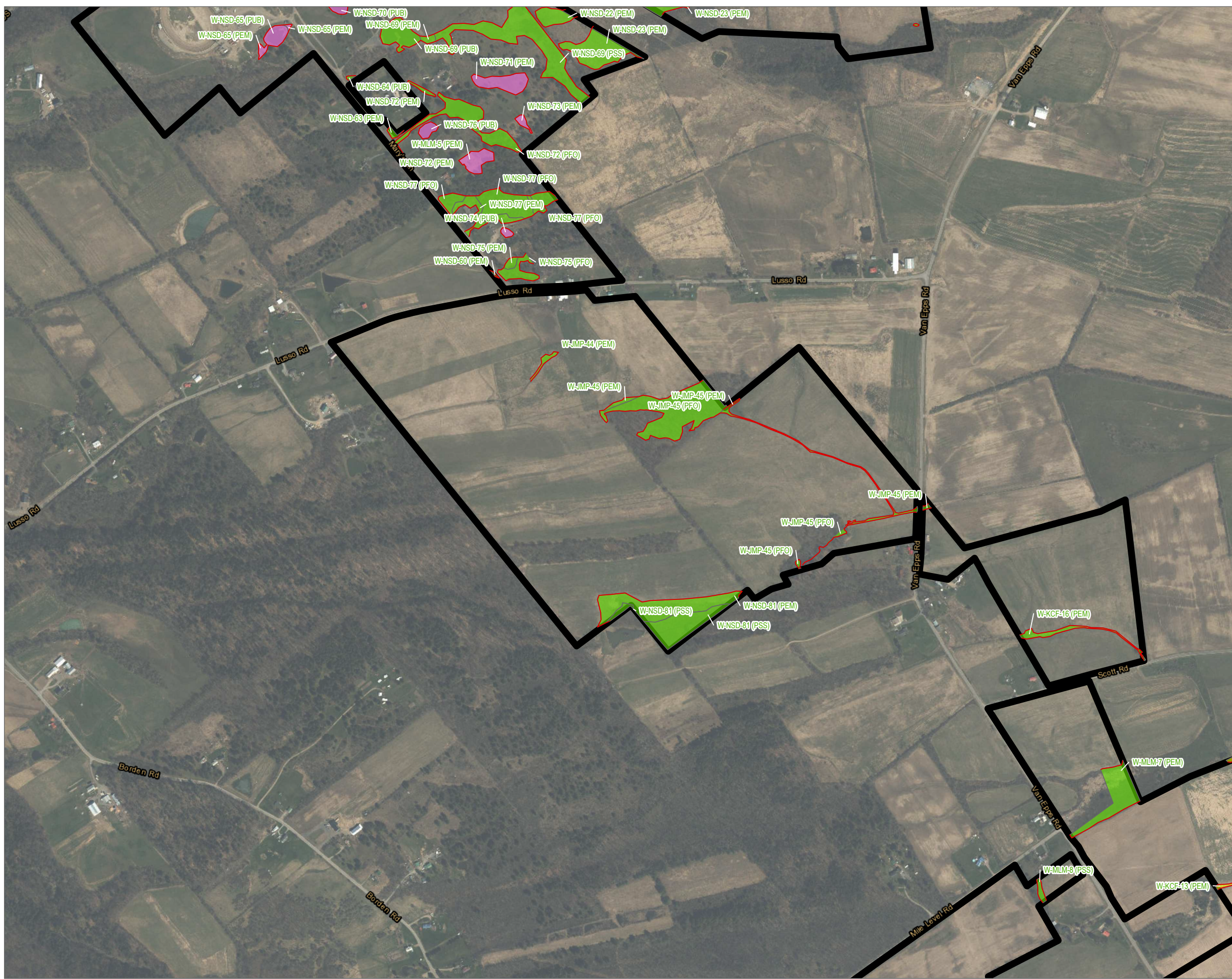
BASE MAP:  
ESRI WORLD IMAGERY BASEMAP - 3/30/2022.  
DATA SOURCES:  
ESRI, USGS, NYSGIS, MONTGOMERY COUNTY, TOWN OF GLEN, TRC.

NEW YORK OVERVIEW

1:9,600  
1" = 800'  
0 400 800 FEET

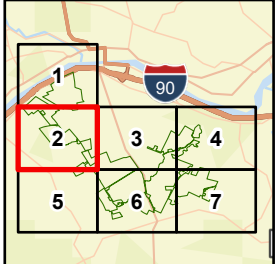
PROJECT: <b>CONNECTGEN MONTGOMERY COUNTY LLC MILL POINT SOLAR I TOWN OF GLEN, MONTGOMERY COUNTY, NY</b>	
TITLE: <b>DELINEATED WETLANDS</b>	
DRAWN BY: A. KAILAS	PROJ. NO.: 411360.1000.0000
CHECKED BY: C. PEARCE	<b>FIGURE 14-1 MAP 1 OF 7</b>
APPROVED BY: T. KONDAK	
DATE: JANUARY 2024	
3 CORPORATE DRIVE SUITE 202 CLIFTON PARK, NY 12065 PHONE: 518.348.1190	
FILE:	Mill_Point_94C_Ex_14.aprx

Coordinate System: NAD 1983 StatePlane New York East FIPS 3101 Feet; Map Rotation: 0  
 -- Saved By: AKAILAS on 1/22/2024 11:56:09 AM; File Path: \\emplyesig\arcgis\proj\1-PROJECTS\ConnectGen\411360-Mill\_Point\_Solar\1-APRX\Mill\_Point\_94C\_Ex\_14.aprx; Layout Name: MP\_Fig14\_1\_Delineated\_Wetlands\_11x17L



- DELINEATED WETLAND BOUNDARY LINE
- DELINEATED WETLAND - JURISDICTIONAL STATUS**
- USACE
- USACE/STATE
- NON-JURISDICTIONAL
- FACILITY SITE
- VILLAGE BOUNDARY
- TOWN BOUNDARY

BASE MAP:  
 ESRI WORLD IMAGERY BASEMAP - 3/30/2022.  
 DATA SOURCES:  
 ESRI, USGS, NYSGIS, MONTGOMERY COUNTY, TOWN OF GLEN, TRC.



1:9,600  
 1" = 800'  
 0 400 800 FEET

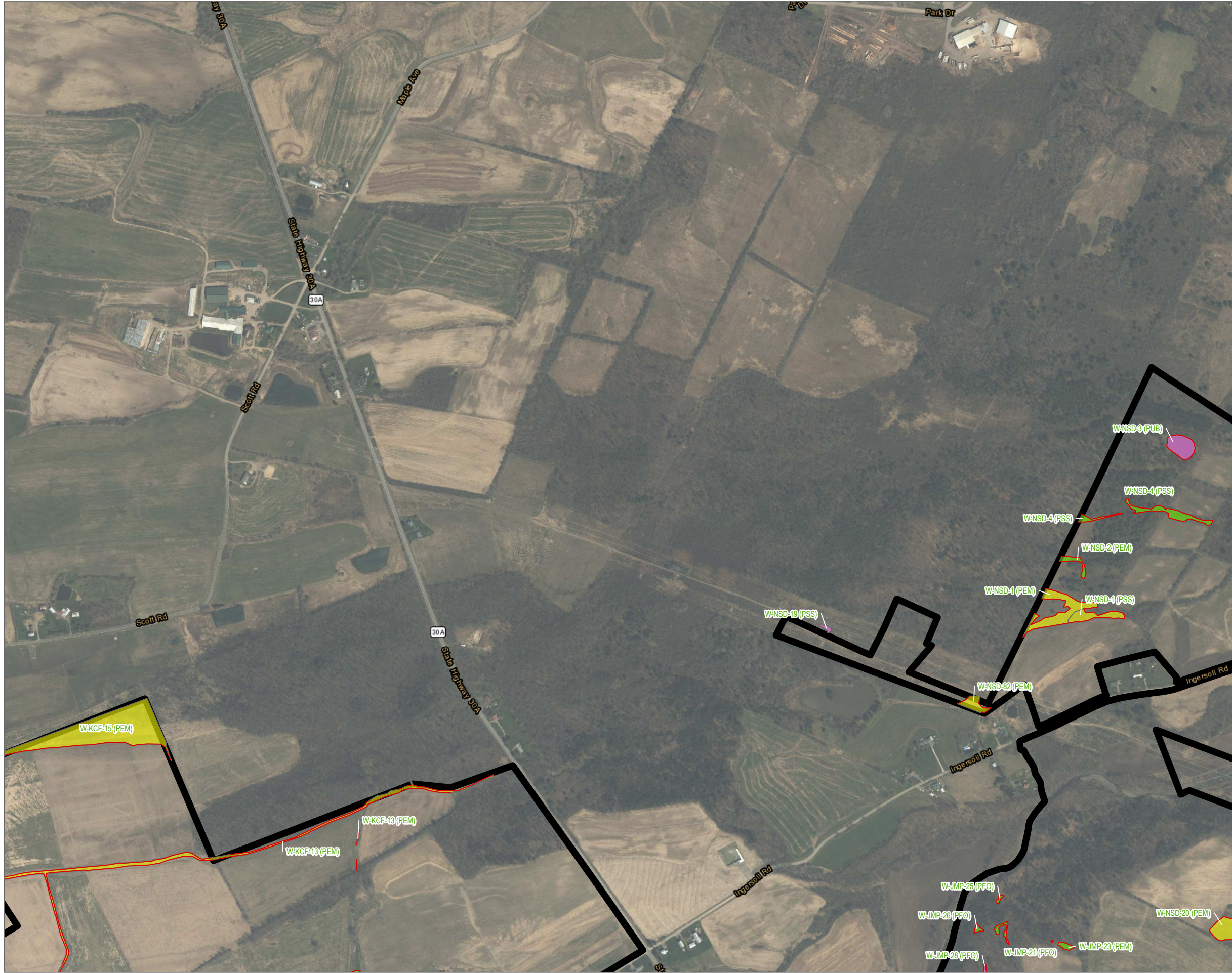
PROJECT: **CONNECTGEN MONTGOMERY COUNTY LLC  
 MILL POINT SOLAR I  
 TOWN OF GLEN, MONTGOMERY COUNTY, NY**

TITLE: **DELINEATED WETLANDS**

DRAWN BY: A. KAILAS	PROJ. NO.: 411360.1000.0000
CHECKED BY: C. PEARCE	<b>FIGURE 14-1</b> MAP 2 OF 7
APPROVED BY: T. KONDAK	
DATE: JANUARY 2024	

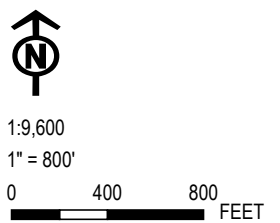
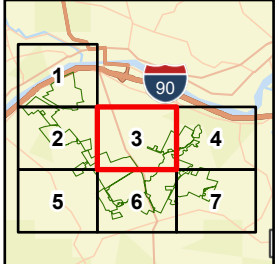
**TRC**  
 3 CORPORATE DRIVE  
 SUITE 202  
 CLIFTON PARK, NY 12065  
 PHONE: 518.348.1190  
 FILE: Mill\_Point\_94C\_Ex\_14.aprx

Coordinate System: NAD 1983 StatePlane New York East FIPS 3101 Feet; Map Rotation: 0  
 Saved By: AKAILAS on 1/22/2024 11:56:09 AM; File Path: \\emplyee\gis\arcgis\proj\1-PROJECTS\ConnectGen\411360-Mill\_Point\_Solar\2-APRX\Mill\_Point\_94C\_Ex\_14.aprx; Layout Name: MP\_Fig14\_1\_Delineated\_Wetlands\_11x17L



- DELINEATED WETLAND BOUNDARY LINE
- DELINEATED WETLAND - JURISDICTIONAL STATUS
- USACE
- USACE/STATE
- NON-JURISDICTIONAL
- FACILITY SITE
- VILLAGE BOUNDARY
- TOWN BOUNDARY

BASE MAP:  
 ESRI WORLD IMAGERY BASEMAP - 3/30/2022.  
 DATA SOURCES:  
 ESRI, USGS, NYSGIS, MONTGOMERY COUNTY, TOWN OF GLEN, TRC.



PROJECT: **CONNECTGEN MONTGOMERY COUNTY LLC  
 MILL POINT SOLAR I  
 TOWN OF GLEN, MONTGOMERY COUNTY, NY**

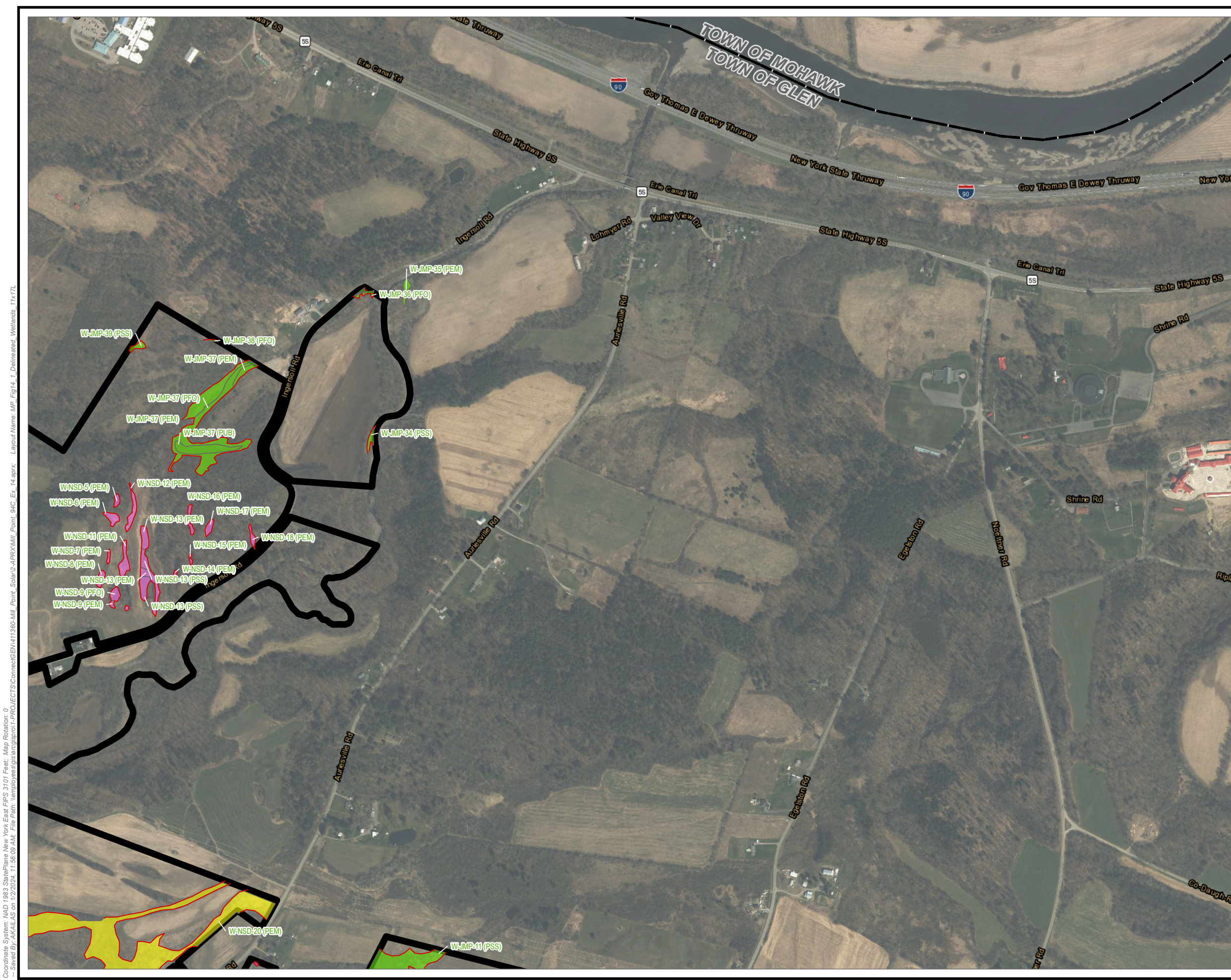
TITLE: **DELINEATED WETLANDS**

DRAWN BY: A. KAILAS	PROJ. NO.: 411360.1000.0000
CHECKED BY: C. PEARCE	
APPROVED BY: T. KONDAK	
DATE: JANUARY 2024	

3 CORPORATE DRIVE  
 SUITE 202  
 CLIFTON PARK, NY 12065  
 PHONE: 518.348.1190

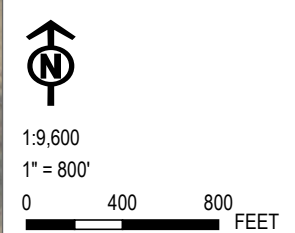
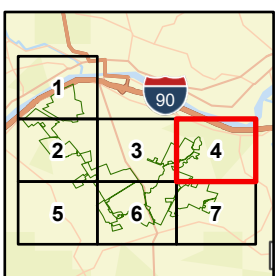
FILE: Mill\_Point\_94C\_Ex\_14.aprx

**FIGURE 14-1**  
 MAP 3 OF 7



- DELINEATED WETLAND BOUNDARY LINE
- DELINEATED WETLAND - JURISDICTIONAL STATUS**
- USACE
- USACE/STATE
- NON-JURISDICTIONAL
- FACILITY SITE
- VILLAGE BOUNDARY
- TOWN BOUNDARY

BASE MAP:  
 ESRI WORLD IMAGERY BASEMAP - 3/30/2022.  
 DATA SOURCES:  
 ESRI, USGS, NYSGIS, MONTGOMERY COUNTY, TOWN OF GLEN, TRC.



PROJECT: <b>CONNECTGEN MONTGOMERY COUNTY LLC MILL POINT SOLAR I TOWN OF GLEN, MONTGOMERY COUNTY, NY</b>	
TITLE: <b>DELINEATED WETLANDS</b>	
DRAWN BY: A. KAILAS	PROJ. NO.: 411360.1000.0000
CHECKED BY: C. PEARCE	<b>FIGURE 14-1 MAP 4 OF 7</b>
APPROVED BY: T. KONDAK	
DATE: JANUARY 2024	
3 CORPORATE DRIVE SUITE 202 CLIFTON PARK, NY 12065 PHONE: 518.348.1190	
FILE:	Mill_Point_94C_Ex_14.aprx

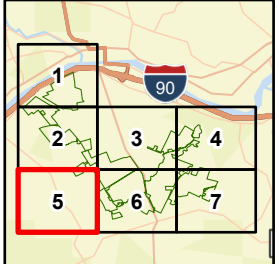
Coordinate System: NAD 1983 StatePlane New York East FIPS 3101 Feet; Map Rotation: 0  
 Saved By: AKAILAS on 1/22/2024 11:56:09 AM; File Path: \\emplyees\gis\arcgispro\1-PROJECTS\ConnectGen\411360-Mill\_Point\_Solar\1-APR\1-1-Delineated\_Wetlands\_Trx17L

Coordinate System: NAD 1983 StatePlane New York East FIPS 3101 Feet; Map Rotation: 0  
 -- Saved By: AKAILAS on 1/22/2024 11:56:09 AM; File Path: \\emplyeesig\arcgis\proj\PROJECTS\ConnectGen\411360-Mill\_Point\_Solar\2-APRX\Mill\_Point\_94C\_Ex\_14.aprx; Layout Name: MP\_Fig14\_1\_Delineated\_Wetlands\_11x17L



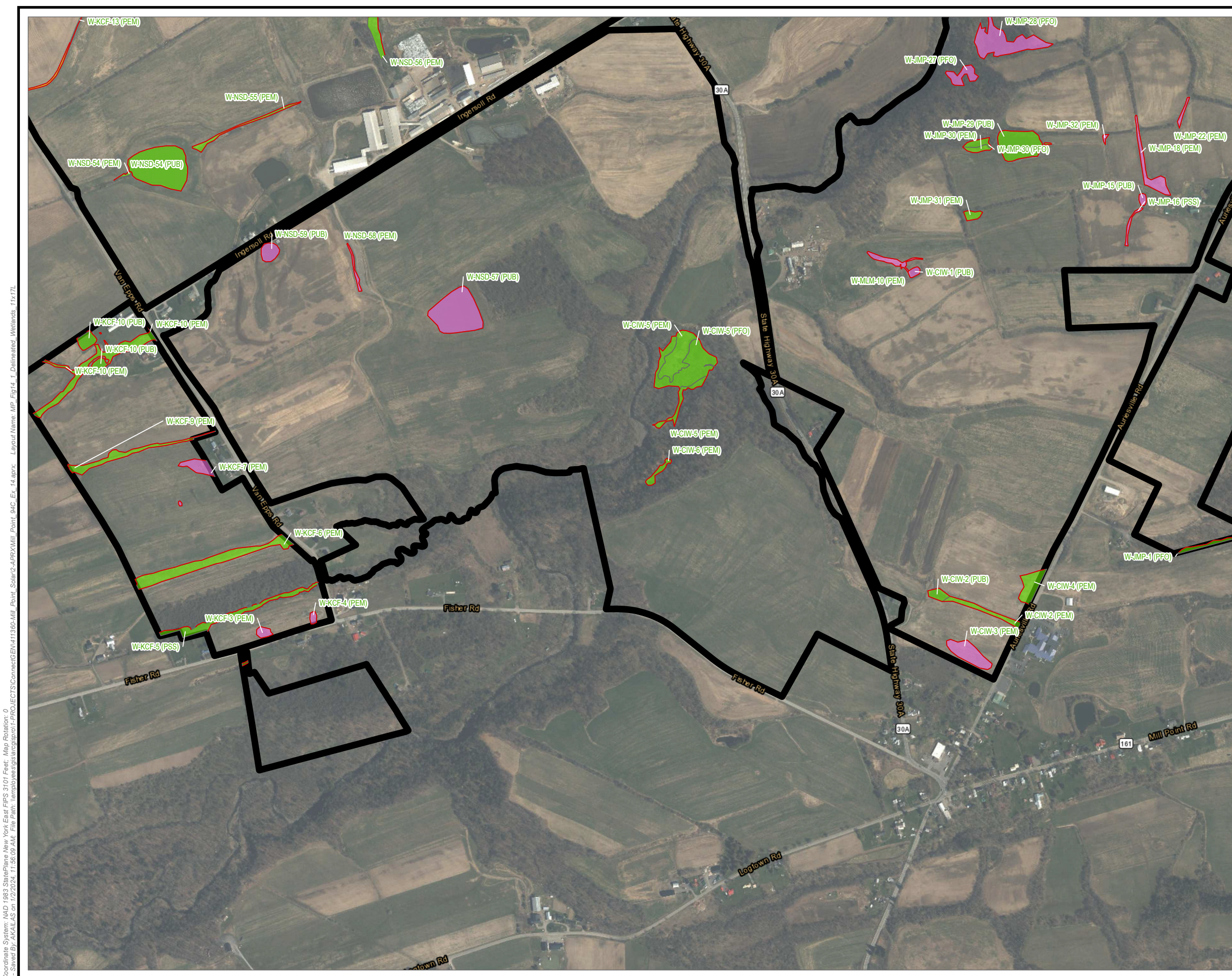
- DELINEATED WETLAND BOUNDARY LINE
- DELINEATED WETLAND - JURISDICTIONAL STATUS
- USACE
- USACE/STATE
- NON-JURISDICTIONAL
- FACILITY SITE
- VILLAGE BOUNDARY
- TOWN BOUNDARY

BASE MAP:  
 ESRI WORLD IMAGERY BASEMAP - 3/30/2022.  
 DATA SOURCES:  
 ESRI, USGS, NYSGIS, MONTGOMERY COUNTY, TOWN OF GLEN, TRC.



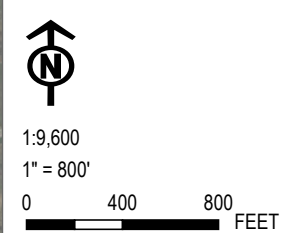
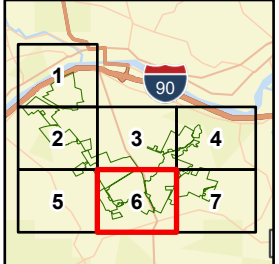
1:9,600  
 1" = 800'  
 0 400 800 FEET

PROJECT: <b>CONNECTGEN MONTGOMERY COUNTY LLC MILL POINT SOLAR I TOWN OF GLEN, MONTGOMERY COUNTY, NY</b>	
TITLE: <b>DELINEATED WETLANDS</b>	
DRAWN BY: A. KAILAS	PROJ. NO.: 411360.1000.0000
CHECKED BY: C. PEARCE	<b>FIGURE 14-1 MAP 5 OF 7</b>
APPROVED BY: T. KONDAK	
DATE: JANUARY 2024	
3 CORPORATE DRIVE SUITE 202 CLIFTON PARK, NY 12065 PHONE: 518.348.1190	
FILE:	Mill_Point_94C_Ex_14.aprx



- DELINEATED WETLAND BOUNDARY LINE
- DELINEATED WETLAND - JURISDICTIONAL STATUS
- USACE
- USACE/STATE
- NON-JURISDICTIONAL
- FACILITY SITE
- VILLAGE BOUNDARY
- TOWN BOUNDARY

BASE MAP:  
 ESRI WORLD IMAGERY BASEMAP - 3/30/2022.  
 DATA SOURCES:  
 ESRI, USGS, NYSGIS, MONTGOMERY COUNTY, TOWN OF GLEN, TRC.



PROJECT: <b>CONNECTGEN MONTGOMERY COUNTY LLC MILL POINT SOLAR I TOWN OF GLEN, MONTGOMERY COUNTY, NY</b>	
TITLE: <b>DELINEATED WETLANDS</b>	
DRAWN BY: A. KAILAS	PROJ. NO.: 411360.1000.0000
CHECKED BY: C. PEARCE	<b>FIGURE 14-1 MAP 6 OF 7</b>
APPROVED BY: T. KONDAK	
DATE: JANUARY 2024	
3 CORPORATE DRIVE SUITE 202 CLIFTON PARK, NY 12065 PHONE: 518.348.1190	
FILE: Mill_Point_94C_Ex_14.aprx	

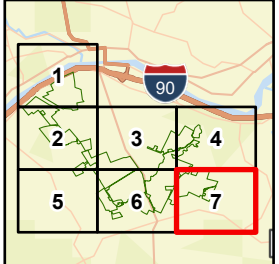
Coordinate System: NAD 1983 StatePlane New York East FIPS 3101 Feet; Map Rotation: 0  
 - Saved By: AKAILAS on 1/22/2024 11:56:09 AM; File Path: \\emplyees\gis\arcgis\proj\1-PROJECTS\ConnectGen\411360-Mill\_Point\_Solar\2-APRX\Mill\_Point\_94C\_Ex\_14.aprx; Layout Name: MP\_Fig14\_1\_Delineated\_Wetlands\_Trx17L

Coordinate System: NAD 1983 StatePlane New York East FIPS 3101 Feet; Map Rotation: 0  
 - Saved By: AKAILAS on 1/22/2024 11:56:09 AM; File Path: I:\employees\akailas\proj\1-PROJECTS\ConnectGen\411360-Mill\_Point\_Solar\2-APRX\Mill\_Point\_94C\_Ex\_14.aprx; Layout Name: MP\_Fig14\_1\_Delineated\_Wetlands\_1rx17L



- DELINEATED WETLAND BOUNDARY LINE
- DELINEATED WETLAND - JURISDICTIONAL STATUS
- USACE
- USACE/STATE
- NON-JURISDICTIONAL
- FACILITY SITE
- VILLAGE BOUNDARY
- TOWN BOUNDARY

BASE MAP:  
 ESRI WORLD IMAGERY BASEMAP - 3/30/2022.  
 DATA SOURCES:  
 ESRI, USGS, NYSGIS, MONTGOMERY COUNTY, TOWN OF GLEN, TRC.



1:9,600  
 1" = 800'  
 0 400 800 FEET

PROJECT: **CONNECTGEN MONTGOMERY COUNTY LLC  
 MILL POINT SOLAR I  
 TOWN OF GLEN, MONTGOMERY COUNTY, NY**

TITLE: **DELINEATED WETLANDS**

DRAWN BY: A. KAILAS	PROJ. NO.: 411360.1000.0000
CHECKED BY: C. PEARCE	
APPROVED BY: T. KONDAK	
DATE: JANUARY 2024	

**TRC**

3 CORPORATE DRIVE  
 SUITE 202  
 CLIFTON PARK, NY 12065  
 PHONE: 518.348.1190

FILE: Mill\_Point\_94C\_Ex\_14.aprx

**FIGURE 14-1**  
 MAP 7 OF 7