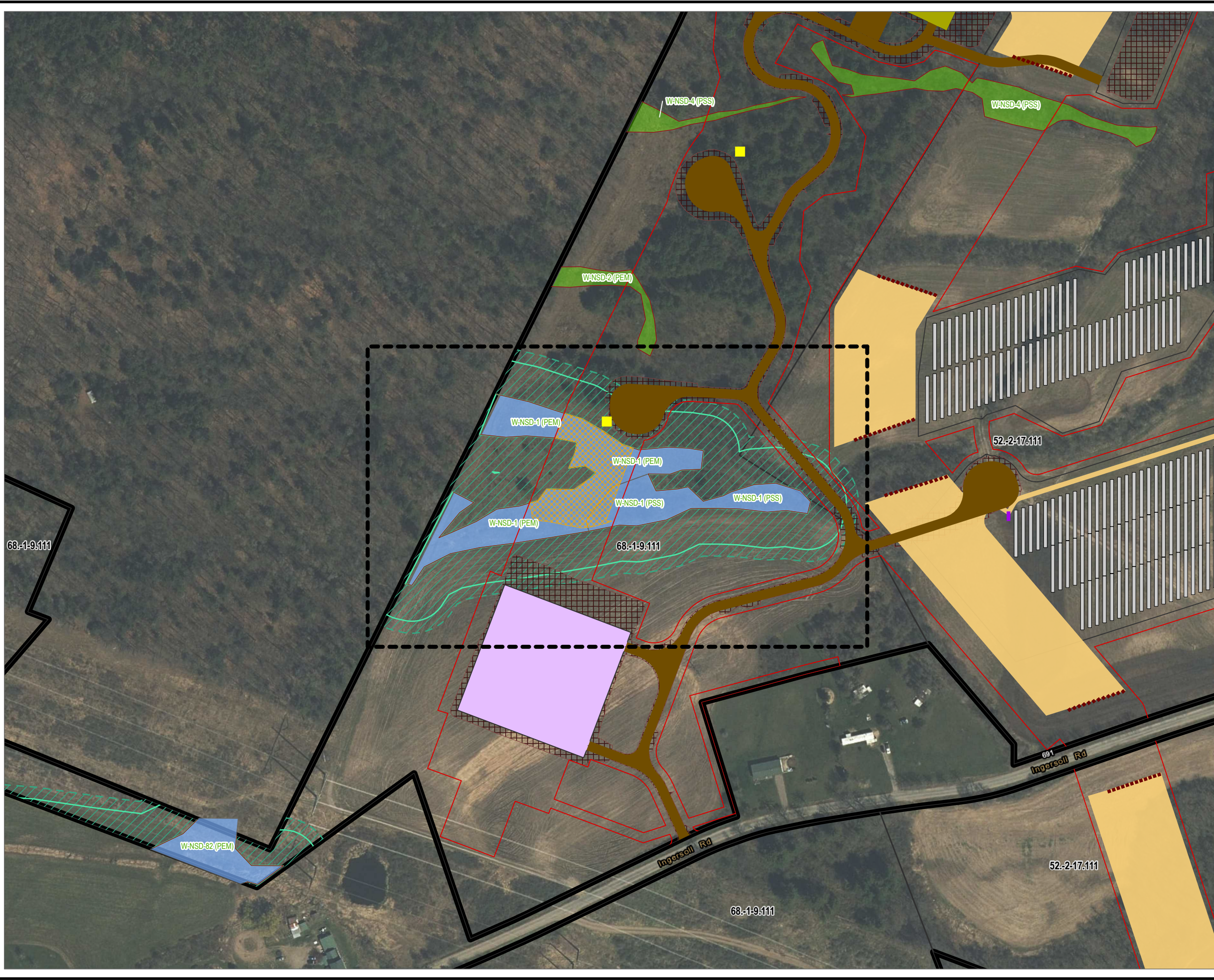
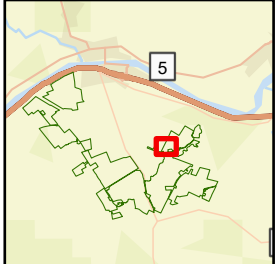
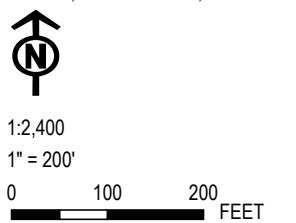


Coordinate System: NAD 1983 StatePlane New York East FIPS 3101 Feet, Map Rotation: 0  
 -- Saved By: AKAILAS on 1/19/2024, 16:08:08 PM, File Path: I:\employ\eastings\regis\proj1-PROJECTS\ConnectGen\11980-Mill Point\_Solar2-APRX\Mill\_Point\_94C\_Ex\_14.aprx, Layout Name: MP\_Fig14\_3\_Delineated\_Wetland\_Impact\_11x17L



- DELINEATED WETLAND BOUNDARY LINE
- DELINEATED WETLAND - JURISDICTIONAL STATUS
  - USACE/STATE
  - USACE
  - NON-JURISDICTIONAL
  - 75 FT ADJACENT AREA
  - 100 FT ADJACENT AREA
- FACILITY SITE PARCELS
- SELECTIVE TREE CLEARING
- FACILITY SITE
- VILLAGE BOUNDARY
- TOWN BOUNDARY
- FACILITY COMPONENT
  - ACCESS ROADS
  - ARRAY PANELS
  - SUBSTATION
  - COLLECTION TRENCH
  - FENCE LINE 1FT
  - GRADING LIMITS
  - HDD BORE PITS
  - INVERTERS
  - LAYDOWN AREA
  - POI SWITCHYARD
  - POLES
  - LIMIT OF DISTURBANCE

BASE MAP:  
 ESRI WORLD IMAGERY BASEMAP -  
 3/30/2022.  
 DATA SOURCES:  
 ESRI, USGS, NYSGIS, MONTGOMERY  
 COUNTY, TOWN OF GLEN, TRC.



PROJECT: **CONNECTGEN MONTGOMERY COUNTY LLC  
 MILL POINT SOLAR I  
 TOWN OF GLEN, MONTGOMERY COUNTY, NY**

TITLE:  
**WETLAND W-NSD-01 PROPOSED IMPACTS**

DRAWN BY:	A. KAILAS	PROJ. NO.:	411360.1000.0000
CHECKED BY:	C. PEARCE	<b>FIGURE 14-3</b>	
APPROVED BY:	T. KONDAK		
DATE:	JANUARY 2024		



3 CORPORATE DRIVE  
 SUITE 202  
 CLIFTON PARK, NY 12065  
 PHONE: 518.348.1190

FILE: Mill\_Point\_94C\_Ex\_14.aprx