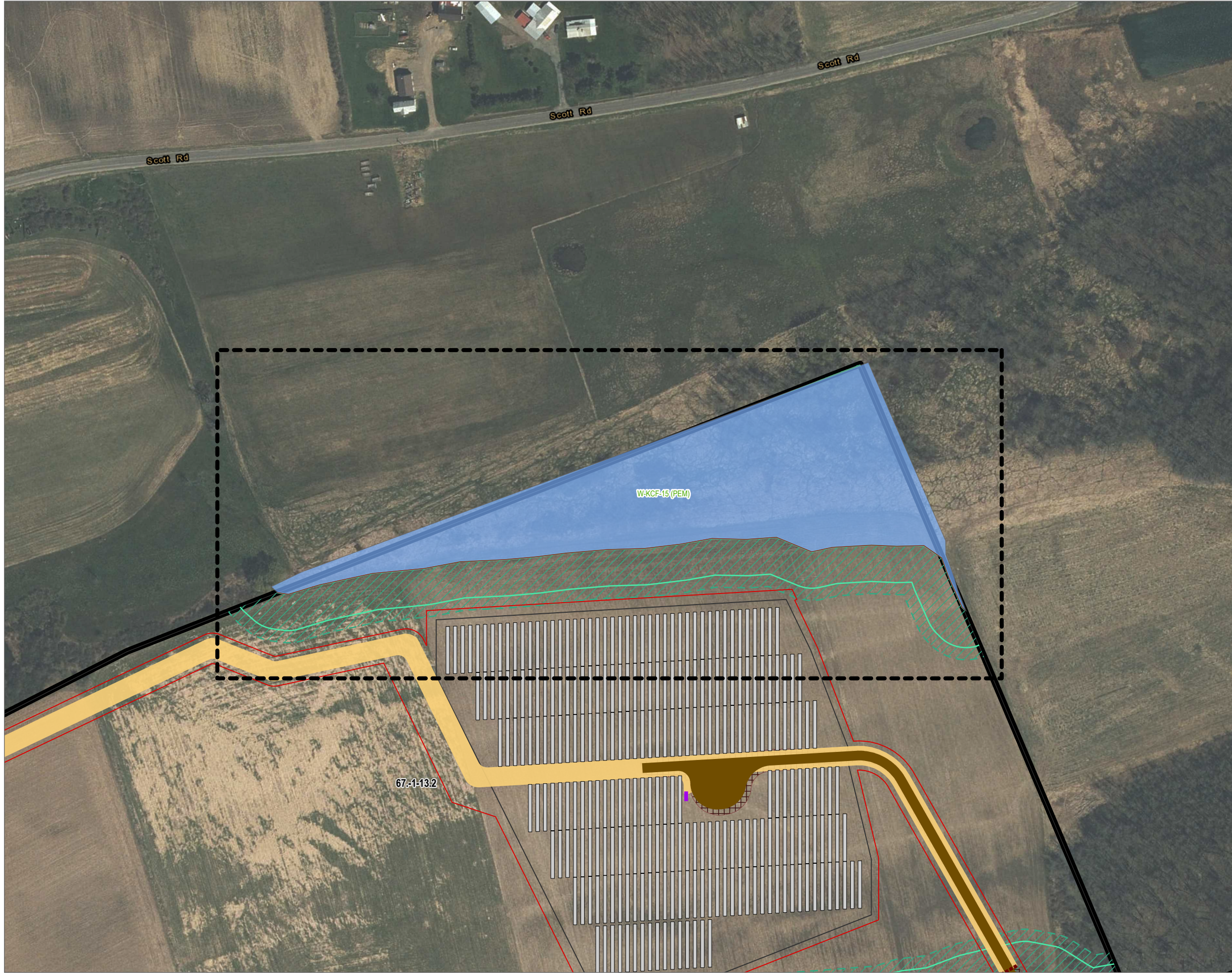
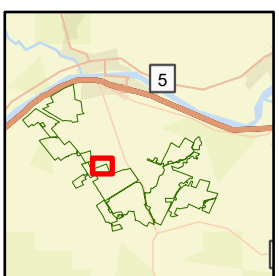


Coordinate System: NAD 1983 StatePlane New York East FIPS 3101 Feet, Map Rotation: 0
 -- Saved By: AKAILAS on 1/19/2024, 09:11:28 AM, File Path: \\mptoyes\sj\starcg\proj1-PROJ\PROJECTS\ConnectGen\411360-Mill_Point_Solar2-APRX\Mill_Point_94C_Ex_14.aprx, Layout Name: MP_Fig14_4_Delineated_Wetland_Impact_1x17L



- DELINEATED WETLAND BOUNDARY LINE
- DELINEATED WETLAND - JURISDICTIONAL STATUS
 - USACE/STATE
 - USACE
 - NON-JURISDICTIONAL
 - 75 FT ADJACENT AREA
 - 100 FT ADJACENT AREA
- FACILITY SITE PARCELS
- FACILITY SITE
- VILLAGE BOUNDARY
- TOWN BOUNDARY
- FACILITY COMPONENT
 - ACCESS ROADS
 - ARRAY PANELS
 - SUBSTATION
 - COLLECTION TRENCH
 - FENCE LINE 1FT
 - GRADING LIMITS
 - HDD BORE PITS
 - INVERTERS
 - LAYDOWN AREA
 - POI SWITCHYARD
 - POLES
 - LIMIT OF DISTURBANCE

BASE MAP:
 ESRI WORLD IMAGERY BASEMAP -
 3/30/2022.
 DATA SOURCES:
 ESRI, USGS, NYSGIS, MONTGOMERY
 COUNTY, TOWN OF GLEN, TRC.



1:2,400
 1" = 200'
 0 100 200 FEET

PROJECT: **CONNECTGEN MONTGOMERY COUNTY LLC
 MILL POINT SOLAR I
 TOWN OF GLEN, MONTGOMERY COUNTY, NY**

TITLE: **WETLAND W-KCF-15 PROPOSED IMPACTS**

DRAWN BY: A. KAILAS	PROJ. NO.: 411360.1000.0000
CHECKED BY: C. PEARCE	FIGURE 14-4
APPROVED BY: T. KONDAK	
DATE: JANUARY 2024	

TRC

3 CORPORATE DRIVE
 SUITE 202
 CLIFTON PARK, NY 12065
 PHONE: 518.348.1190

FILE: Mill_Point_94C_Ex_14.aprx