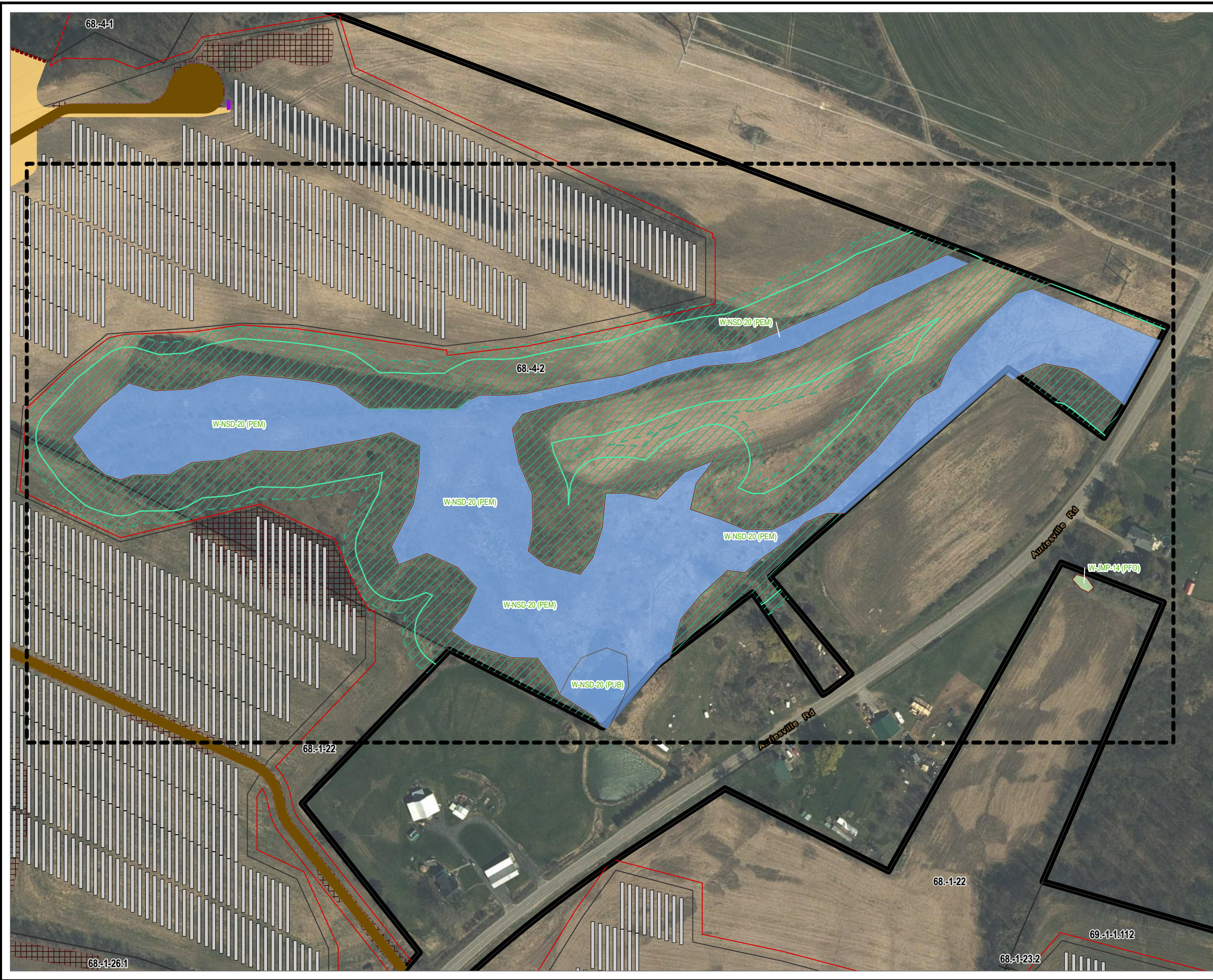


Coordinate System: NAD 1983 StatePlane New York East FIPS 3101 Feet; Map Rotation: 0  
 Saved By: AKAILAS on 1/19/2024, 16:08:08 PM; File Path: \\emplyee\gis\mgs\proj\1-PROJECTS\ConnectGen\11360-Mill\_Point\_Solar2-APRX\Mill\_Point\_94C\_Ex\_14.aprx; Layout Name: MP\_Fig14\_5\_Delineated\_Wetland\_Impact\_11x17L



**DELINEATED WETLAND BOUNDARY LINE**  
 DELINEATED WETLAND - JURISDICTIONAL STATUS

- USACE/STATE
- USACE
- NON-JURISDICTIONAL
- 75 FT ADJACENT AREA
- 100 FT ADJACENT AREA
- FACILITY SITE
- VILLAGE BOUNDARY
- TOWN BOUNDARY

**FACILITY COMPONENT**

- ACCESS ROADS
- ARRAY PANELS
- SUBSTATION
- COLLECTION TRENCH
- FENCE LINE 1FT
- GRADING LIMITS
- HDD BORE PITS
- INVERTERS
- LAYDOWN AREA
- POI SWITCHYARD
- POLES
- LIMIT OF DISTURBANCE
- FACILITY SITE PARCELS

BASE MAP:  
 ESRI WORLD IMAGERY BASEMAP - 3/30/2022.  
 DATA SOURCES:  
 ESRI, USGS, NYSGIS, MONTGOMERY COUNTY, TOWN OF GLEN, TRC.

**NEW YORK OVERVIEW**  
 SITE LOCATION

**Scale:**  
 1:2,400  
 1" = 200'  
 0 100 200 FEET

<b>PROJECT: CONNECTGEN MONTGOMERY COUNTY LLC MILL POINT SOLAR I TOWN OF GLEN, MONTGOMERY COUNTY, NY</b>	
<b>TITLE: WETLAND W-NSD-20 PROPOSED IMPACTS</b>	
DRAWN BY: A. KAILAS	PROJ. NO.: 411360.1000.0000
CHECKED BY: C. PEARCE	<b>FIGURE 14-5</b>
APPROVED BY: T. KONDAK	
DATE: JANUARY 2024	

**TRC** 3 CORPORATE DRIVE  
 SUITE 202  
 CLIFTON PARK, NY 12065  
 PHONE: 518.348.1190

FILE: Mill\_Point\_94C\_Ex\_14.aprx