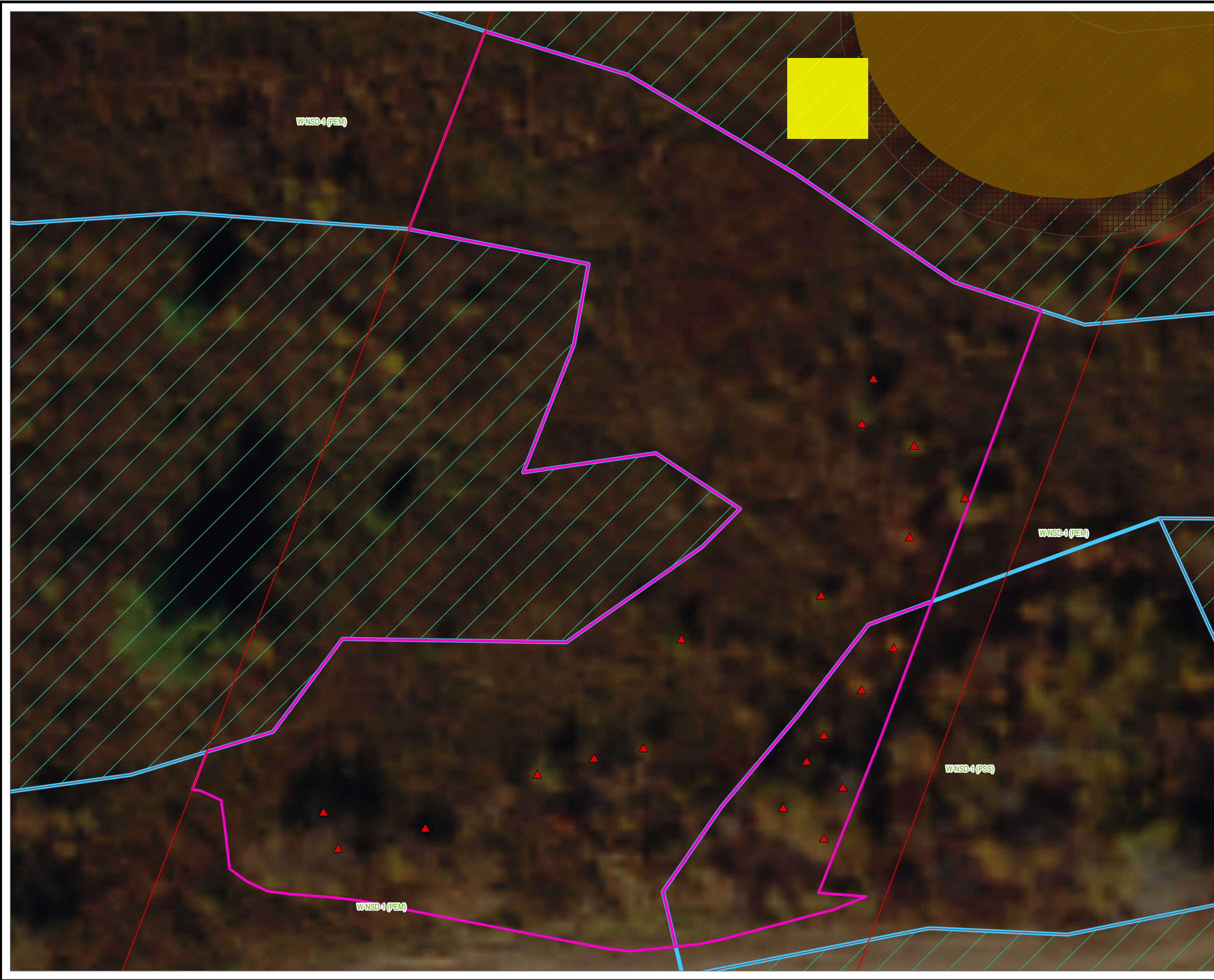


Coordinate System: NAD 1983 StatePlane New York East FIPS 3101 Feet, Map Rotation: 0  
 -- Saved By: AKAILAS on 7/22/2024, 13:20:08 PM, File Path: I:\employeestgs\trc\proj1-PROJECTS\ConnectGen\11860-Mill\_Point\_Solar2-APRX\Mill\_Point\_94C\_Exc\_14.aprx, Layout Name: MP\_Fig14\_6\_Delineated\_Wetland\_Impact\_11x17L



	PROPOSED TREE CLEARING
	SELECTIVE CLEARING
	LIMIT OF DISTURBANCE
FACILITY COMPONENT	
	ACCESS ROADS
	ARRAY PANELS
	SUBSTATION
	COLLECTION TRENCH
	FENCE LINE 1FT
	GRADING LIMITS
	HDD BORE PITS
	INVERTERS
	LAYDOWN AREA
	POI SWITCHYARD
	POLES
	DELINEATED WETLAND BOUNDARY LINE
DELINEATED WETLAND - JURISDICTIONAL STATUS	
	USACE/STATE
	USACE
	NON-JURISDICTIONAL
	75 FT ADJACENT AREA
	100 FT ADJACENT AREA
	FACILITY SITE PARCELS
	FACILITY SITE
	VILLAGE BOUNDARY
	TOWN BOUNDARY
BASE MAP: NAIP IMAGERY BASEMAP - 10/22/2022. DATA SOURCES: ESRI, USGS, NYSGIS, MONTGOMERY COUNTY, TOWN OF GLEN, NAIP, TRC.	
1:300 1" = 25'	
	0 12.5 25 FEET
<b>PROJECT: CONNECTGEN MONTGOMERY COUNTY LLC MILL POINT SOLAR I TOWN OF GLEN, MONTGOMERY COUNTY, NY</b>	
<b>TITLE: DRAFT SELECTIVE TREE CLEARING PLAN FOR W-NSD-01</b>	
DRAWN BY: A. KAILAS	PROJ. NO.: 411360.1000.0000
CHECKED BY: C. PEARCE	<b>FIGURE 14-6</b>
APPROVED BY: T. KONDAK	
DATE: JULY 2024	
3 CORPORATE DRIVE SUITE 202 CLIFTON PARK, NY 12065 PHONE: 518.348.1190	
FILE:	Mill_Point_94C_Exc_14.aprx