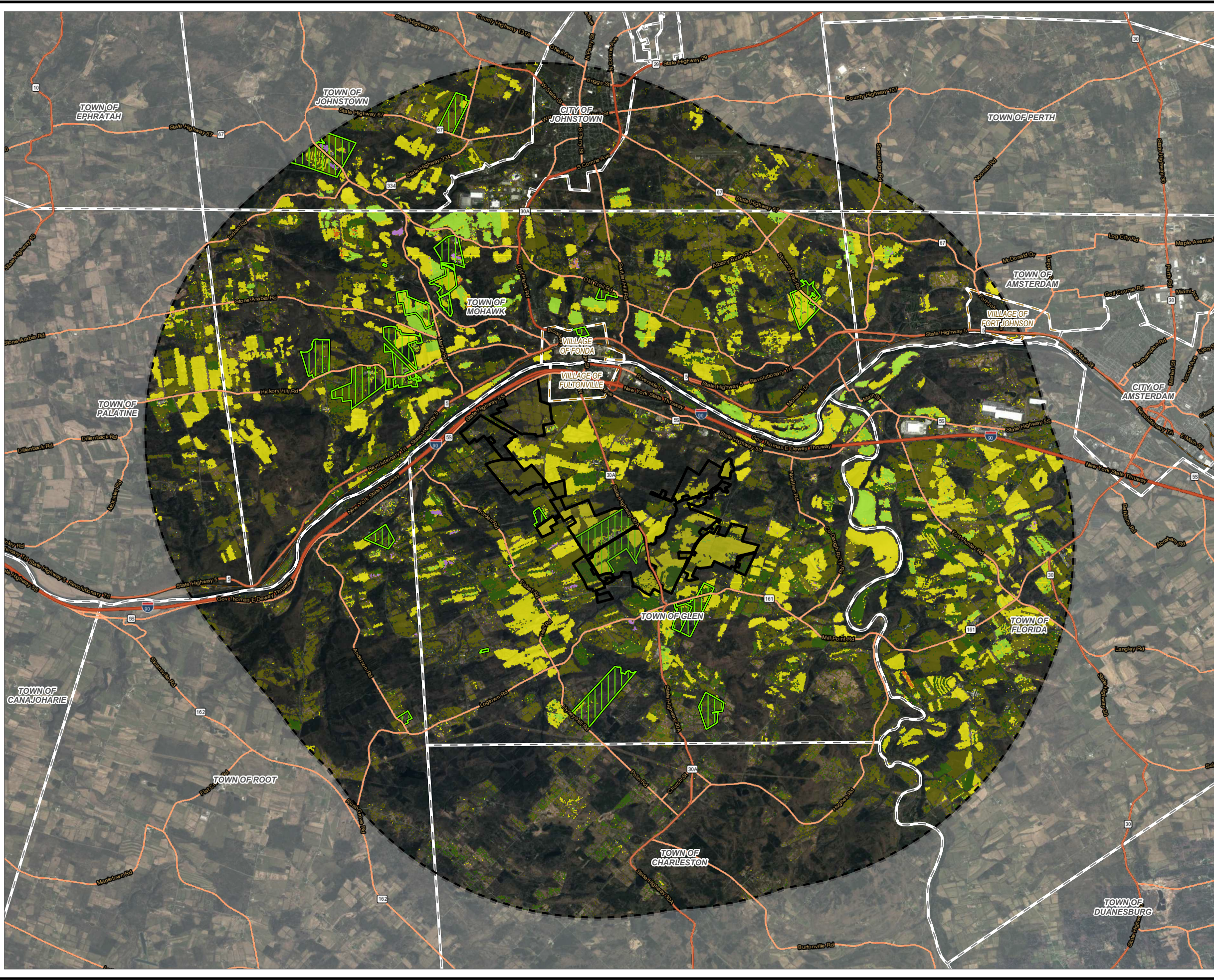
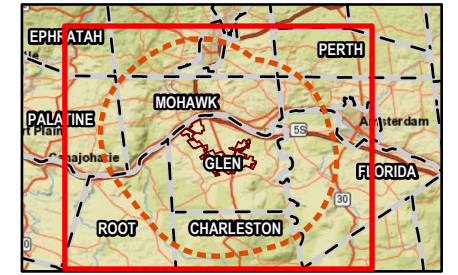


Coordinate System: NAD 1983 StatePlane New York East FIPS 3101 Feet; Map Rotation: 0
 - Saved By: AKAILAS on 12/21/2023 12:27:42 PM; File Path: \\emplyee\gis\arcgispro\1-PROJECTS\ConnectGen\411360-Mill_Point_Solar\2-APR\X\Mill_Point_94C_EX_15.aprx; Layout Name: MP_Fig15_1_Agricultural_Land_Study_Area_Trx17L



- FACILITY SITE
- FIVE-MILE STUDY AREA BOUNDARY
- TOWN BOUNDARY
- VILLAGE BOUNDARY
- KNOWN OPERATING FARMS
- ALFALFA
- APPLES
- BARLEY
- BLUEBERRIES
- CHRISTMAS TREES
- CLOVER/WILDFLOWERS
- CORN
- FALLOW/IDLE CROPLAND
- GRAPES
- OTHER CROP
- OTHER HAY/NON ALFALFA
- PUMPKINS
- RYE
- SOYBEANS
- STRAWBERRIES

BASE MAP: ESRI WORLD IMAGERY SERVICE (3/30/2022)
 DATA SOURCES: ESRI, NYS GIS, NASS, TRC.



1:96,000
 1" = 8,000 Feet
 0 4,000 8,000 FEET

PROJECT: CONNECTGEN MONTGOMERY COUNTY LLC MILL POINT SOLAR I TOWN OF GLEN, MONTGOMERY COUNTY, NY	
TITLE: AGRICULTURAL LAND IN THE STUDY AREA	
DRAWN BY: A. KAILAS	PROJ. NO.: 411360
CHECKED BY: A. CORDAS	FIGURE 15-1
APPROVED BY: C. PEARCE	
DATE: DECEMBER 2023	
3 CORPORATE DRIVE SUITE 202 CLIFTON PARK, NY 12065 PHONE: 518.348.1190	
FILE: MILL_POINT_94C_EX_15APRX	