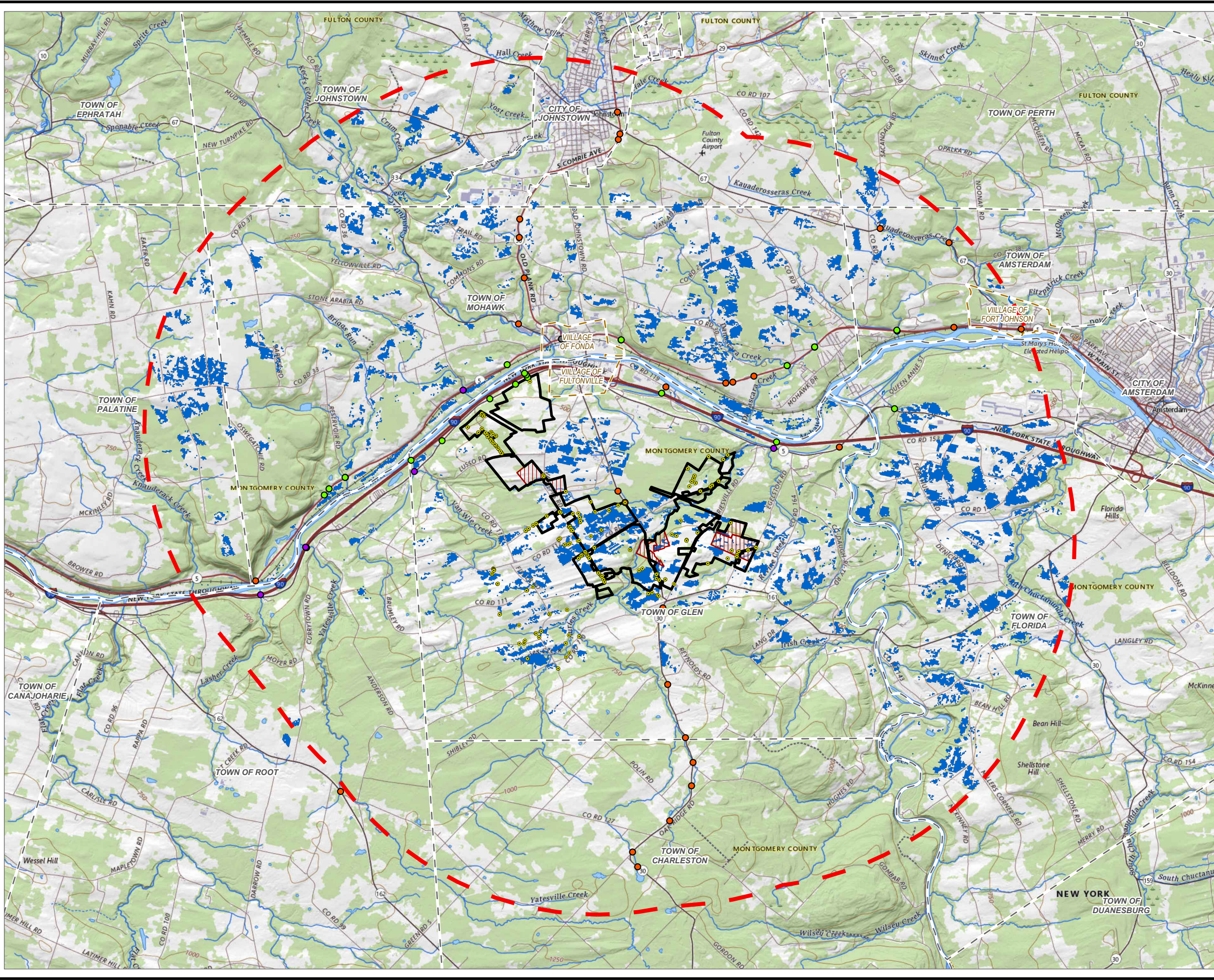


Coordinate System: NAD 1983 StatePlane New York East FIPS 3101 Feet; Map Rotation: 0
 Saved By: AKALIAS on 12/22/2023 14:52:14 PM; File Path: \\emplyee\gis\arcgispro\1-PROJECTS\ConnectGen\411360-Mill_Point_Solar\2-APPROX\Mill_Point_94C_Exc_15.aprx; Layout Name: MP_Fig15-2_Location_of_Drainage_Features_Study_Area_11X17.rvt



- FIVE-MILE STUDY AREA BOUNDARY
 - FACILITY SITE
 - TOWN BOUNDARY
 - VILLAGE BOUNDARY
 - LANDOWNER IDENTIFIED DRAINAGE/DITCH AREAS
 - SUSPECTED DRAINAGE TILE AREA
 - NYSDOT CULVERT
 - TRC IDENTIFIED CULVERT
 - BURIED STREAM
 - CULVERT
 - MULTIPLE CULVERT
- NAACC WATERBODY CROSSINGS**
- BURIED STREAM
 - CULVERT
 - MULTIPLE CULVERT

NOTES:
 1. THIS FIGURE IS DESIGNED TO BE VIEWED OR PRINTED IN COLOR AT 11X17.

BASE MAP: USGS, THE NATIONAL MAP TOPO, APRIL 2023.
 DATA SOURCES: ESRI, NAACC, NCAR, NYS, TRC

1:96,000
 1" = 8,000'
 0 4,000 8,000 FEET

PROJECT:		CONNECTGEN MONTGOMERY COUNTY LLC MILL POINT SOLAR I TOWN OF GLEN, MONTGOMERY COUNTY, NY	
TITLE: LOCATION OF DRAINAGE FEATURES WITHIN THE STUDY AREA			
DRAWN BY:	A. KAILAS	PROJ. NO.:	411360
CHECKED BY:	C. PEARCE	FIGURE 15-2	
APPROVED BY:	T. KONDAK		
DATE:	DECEMBER 2023		
		3 CORPORATE DRIVE SUITE 202 CLIFTON PARK, NY 12065 PHONE: 518.348.1190	
FILE:	Mill_Point_94C_Exc_15.aprx		