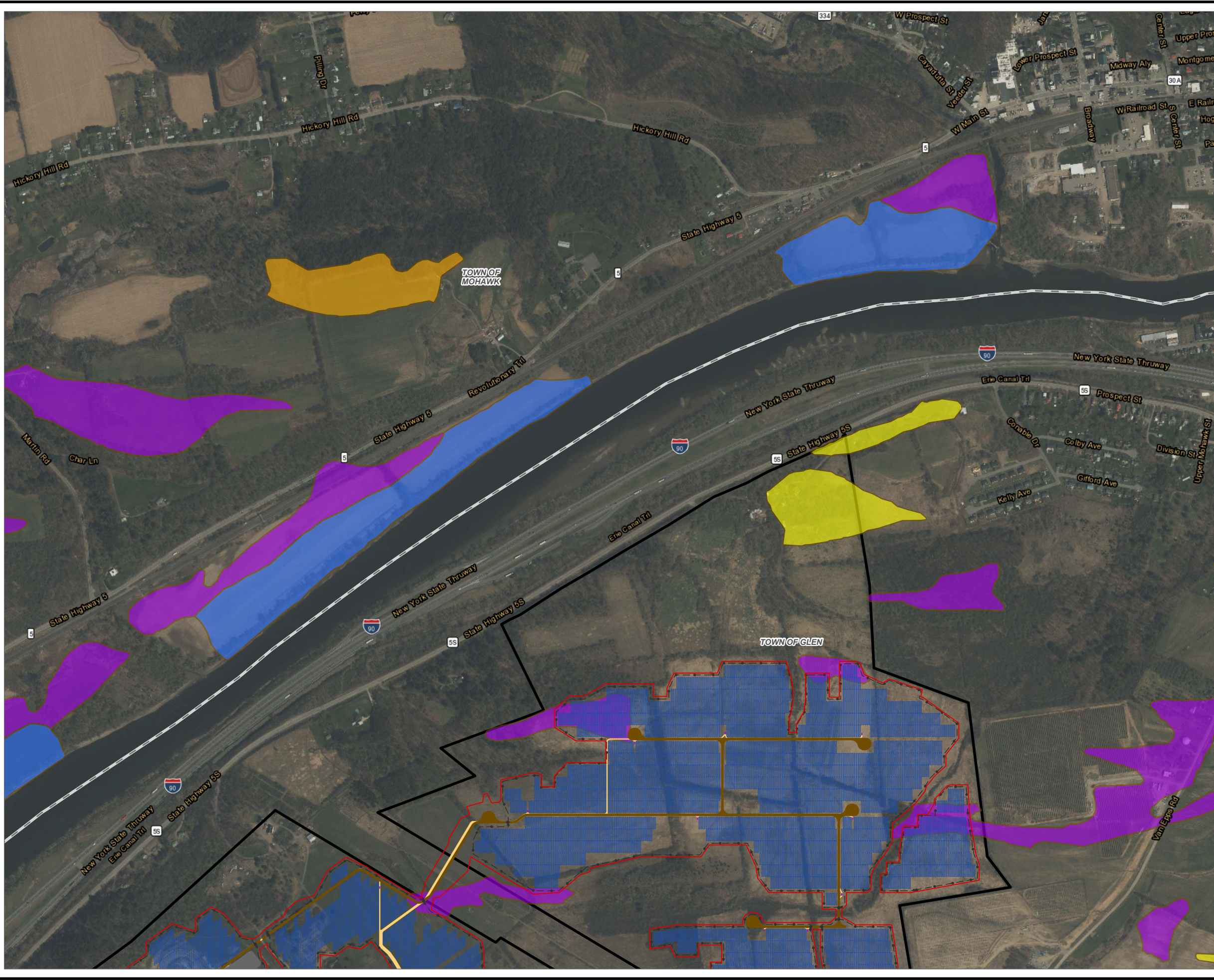


Coordinate System: NAD 1983 StatePlane New York East FIPS 3101 Feet; Map Rotation: 0  
 - Saved By: AKAILAS on 1/23/2024, 12:31:50 PM; File Path: \\emplyee\gis\proj\1-PROJECTS\ConnectGen\11804-Mill\_Point\_Solar2-APR\15-APR-2024-11x17L

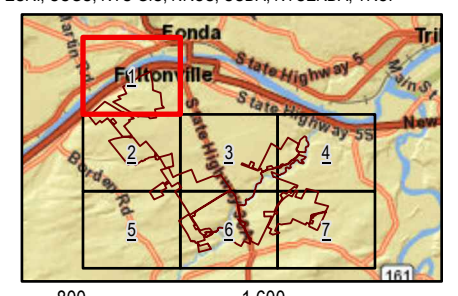


- FACILITY COMPONENTS**
- ACCESS ROADS
  - ARRAY PANELS
  - SUBSTATION
  - COLLECTION TRENCH
  - HDD BORE PITS
  - GRADING LIMITS
  - INVERTERS
  - LAYDOWN AREA
  - POI SWITCHYARD
  - POLES
  - FENCE LINE
  - LIMITS OF DISTURBANCE
  - FACILITY SITE
- MINERAL SOIL GROUP**
- MINERAL SOIL GROUP 1
  - MINERAL SOIL GROUP 2
  - MINERAL SOIL GROUP 3
  - MINERAL SOIL GROUP 4
- VILLAGE BOUNDARY
- TOWN BOUNDARY

**NOTES:**  
 1. THIS FIGURE IS DESIGNED TO BE VIEWED OR PRINTED IN COLOR AT 11X17.

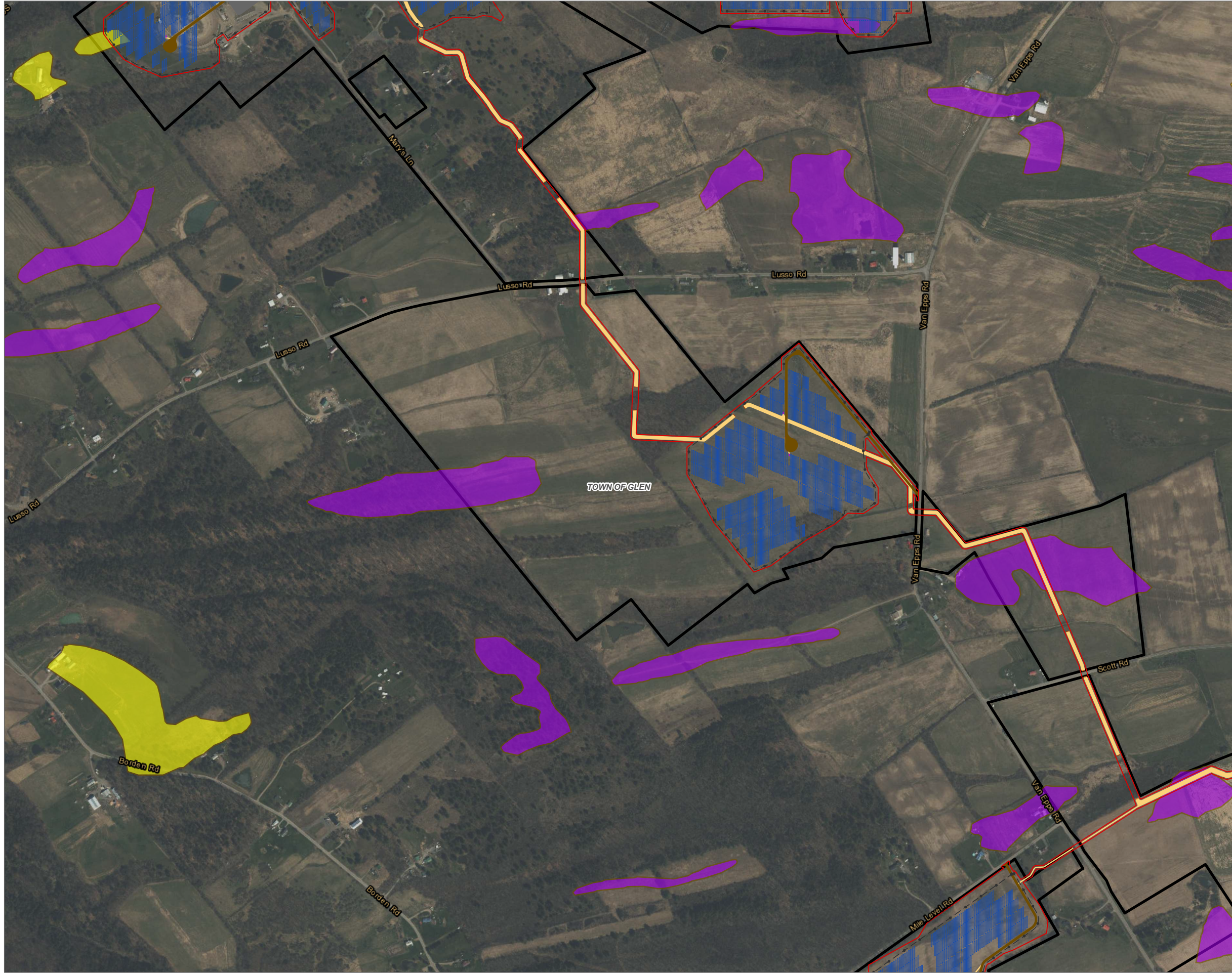
BASE MAP: ESRI WORLD IMAGERY SERVICE (3/30/2022)  
 DATA SOURCES: ESRI, USGS, NYS GIS, NRCS, USDA, NYSEEDA, TRC.

1:9,600  
 1" = 800 Feet



PROJECT:		CONNECTGEN MONTGOMERY COUNTY LLC MILL POINT SOLAR I TOWN OF GLEN, MONTGOMERY COUNTY, NY	
TITLE:		MINERAL SOIL GROUPS 1-4 IN THE FACILITY SITE	
DRAWN BY:	A. KAILAS	PROJ. NO.:	411360
CHECKED BY:	C. PEARCE	<b>FIGURE 15-3</b> MAP 1 OF 7	
APPROVED BY:	T. KONDAK		
DATE:	JANUARY 2024		
		3 CORPORATE DRIVE SUITE 202 CLIFTON PARK, NY 12065 PHONE: 518.348.1190	
FILE:	MILL_POINT_94C_EX_15APR24		

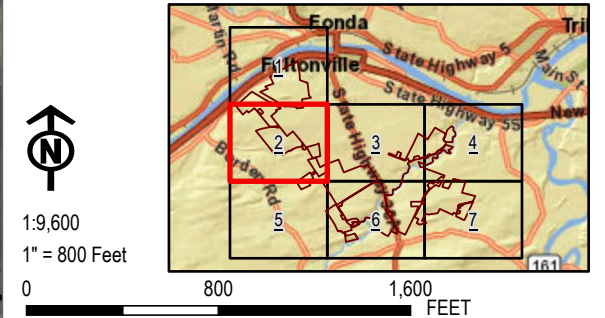
Coordinate System: NAD 1983 StatePlane New York East FIPS 3101 Feet, Map Rotation: 0  
 -- Saved By: AKAILAS on 1/23/2024, 12:31:50 PM, File Path: I:\employeestgs\regispro1-PROJECTS\ConnectGen\11980-Mill Point\_Solar1-APRX\Mill\_Point\_94C\_EX\_15.aprx, Layout Name: MP\_Fig15\_3\_MineralSoilGroups-4-11x17L



- FACILITY COMPONENTS**
- ACCESS ROADS
  - ARRAY PANELS
  - SUBSTATION
  - COLLECTION TRENCH
  - HDD BORE PITS
  - GRADING LIMITS
  - INVERTERS
  - LAYDOWN AREA
  - POI SWITCHYARD
  - POLES
  - FENCE LINE
  - LIMITS OF DISTURBANCE
  - FACILITY SITE
- MINERAL SOIL GROUP**
- MINERAL SOIL GROUP 1
  - MINERAL SOIL GROUP 2
  - MINERAL SOIL GROUP 3
  - MINERAL SOIL GROUP 4
- VILLAGE BOUNDARY
  - TOWN BOUNDARY

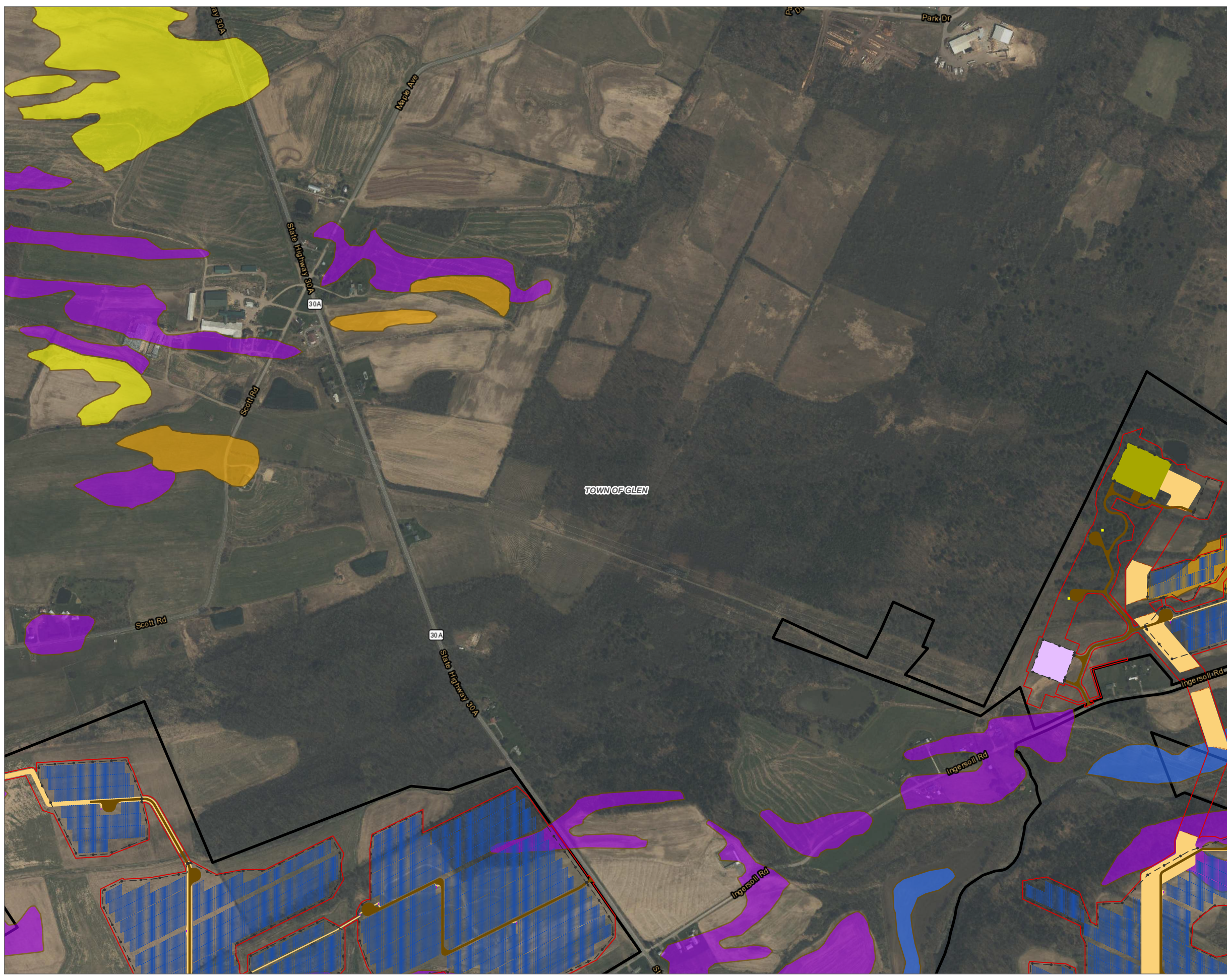
**NOTES:**  
 1. THIS FIGURE IS DESIGNED TO BE VIEWED OR PRINTED IN COLOR AT 11X17.

BASE MAP: ESRI WORLD IMAGERY SERVICE (3/30/2022)  
 DATA SOURCES: ESRI, USGS, NYS GIS, NRCS, USDA, NYSEERDA, TRC.



PROJECT: <b>CONNECTGEN MONTGOMERY COUNTY LLC MILL POINT SOLAR I TOWN OF GLEN, MONTGOMERY COUNTY, NY</b>	
TITLE: <b>MINERAL SOIL GROUPS 1-4 IN THE FACILITY SITE</b>	
DRAWN BY: A. KAILAS	PROJ. NO.: 411360
CHECKED BY: C. PEARCE	<b>FIGURE 15-3 MAP 2 OF 7</b>
APPROVED BY: T. KONDAK	
DATE: JANUARY 2024	
3 CORPORATE DRIVE SUITE 202 CLIFTON PARK, NY 12065 PHONE: 518.348.1190	
FILE:	MILL_POINT_94C_EX_15APRX

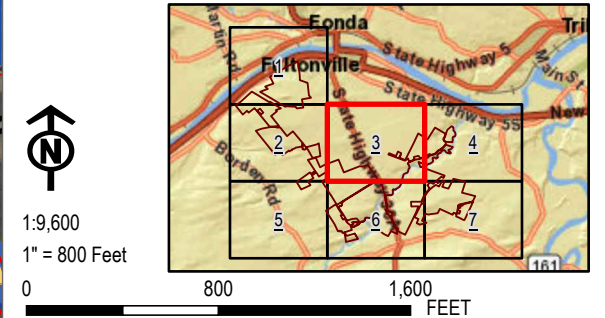
Coordinate System: NAD 1983 StatePlane New York East FIPS 3101 Feet; Map Rotation: 0  
 -- Saved By: AKAILAS on: 1/23/2024, 12:31:50 PM; File Path: \\emplyee\gis\regis\proj1-PROJECTS\ConnectGen\119804\Mill\_Point\_Solar1-APRX\Mill\_Point\_94C\_Ext\_15.aprx; Layout Name: MP\_Fig15\_3\_MineralSoilGroups\_4\_11x17L



- FACILITY COMPONENTS**
- ACCESS ROADS
  - ARRAY PANELS
  - SUBSTATION
  - COLLECTION TRENCH
  - HDD BORE PITS
  - GRADING LIMITS
  - INVERTERS
  - LAYDOWN AREA
  - POI SWITCHYARD
  - POLES
  - FENCE LINE
  - LIMITS OF DISTURBANCE
  - FACILITY SITE
- MINERAL SOIL GROUP**
- MINERAL SOIL GROUP 1
  - MINERAL SOIL GROUP 2
  - MINERAL SOIL GROUP 3
  - MINERAL SOIL GROUP 4
- VILLAGE BOUNDARY
  - TOWN BOUNDARY

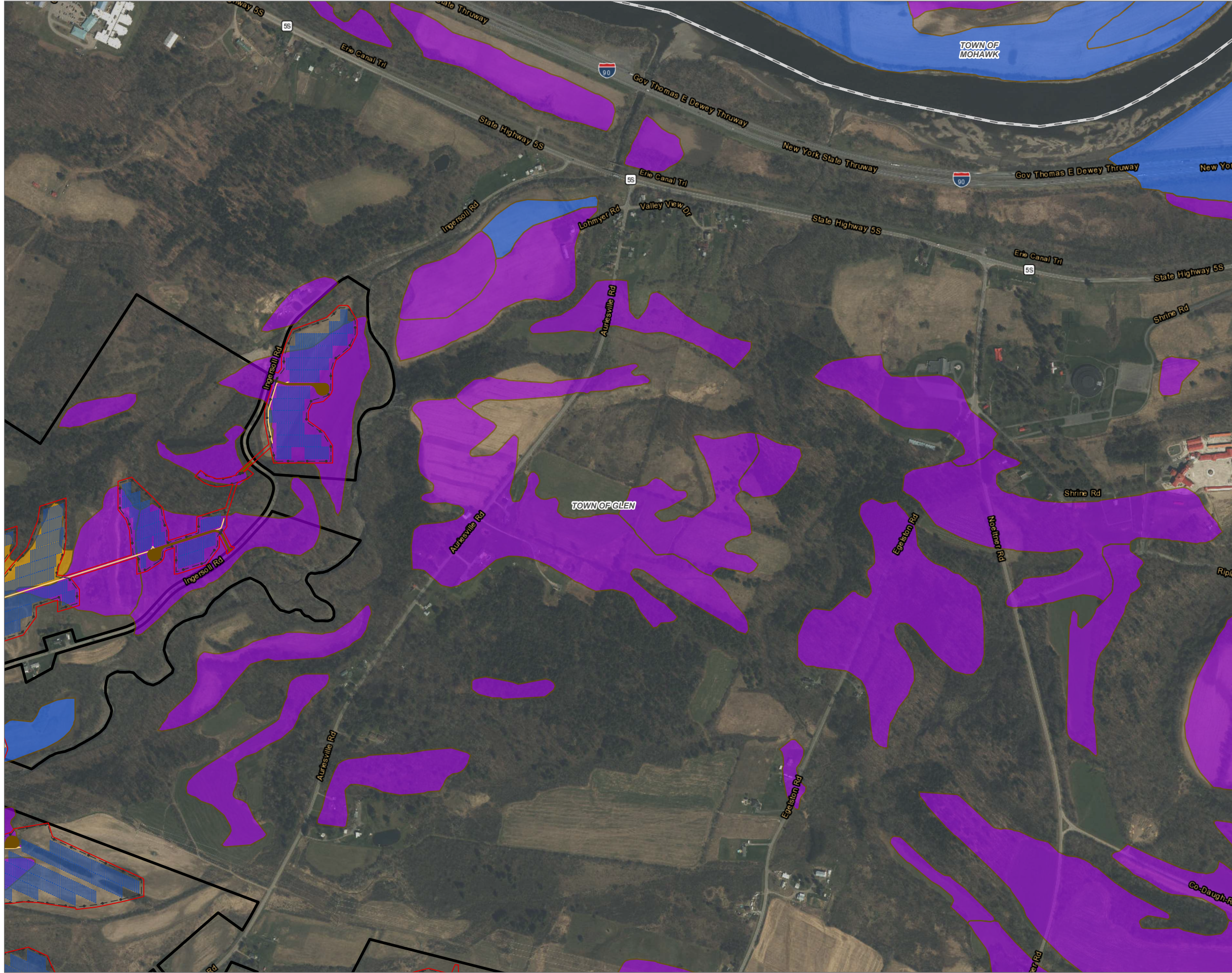
**NOTES:**  
 1. THIS FIGURE IS DESIGNED TO BE VIEWED OR PRINTED IN COLOR AT 11X17.

BASE MAP: ESRI WORLD IMAGERY SERVICE (3/30/2022)  
 DATA SOURCES: ESRI, USGS, NYS GIS, NRCS, USDA, NYSEEDA, TRC.



PROJECT: <b>CONNECTGEN MONTGOMERY COUNTY LLC MILL POINT SOLAR I TOWN OF GLEN, MONTGOMERY COUNTY, NY</b>	
TITLE: <b>MINERAL SOIL GROUPS 1-4 IN THE FACILITY SITE</b>	
DRAWN BY: A. KAILAS	PROJ. NO.: 411360
CHECKED BY: C. PEARCE	<b>FIGURE 15-3 MAP 3 OF 7</b>
APPROVED BY: T. KONDAK	
DATE: JANUARY 2024	
3 CORPORATE DRIVE SUITE 202 CLIFTON PARK, NY 12065 PHONE: 518.348.1190	
FILE:	MILL_POINT_94C_EX_15APRX

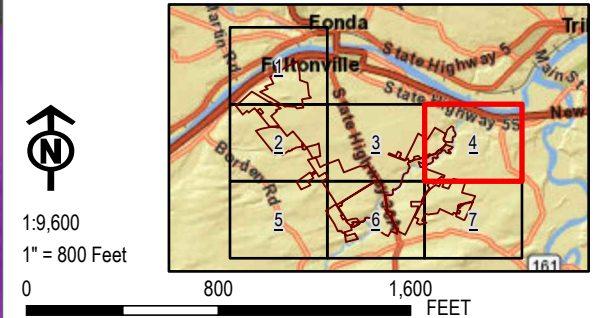
Coordinate System: NAD 1983 StatePlane New York East FIPS 3101 Feet; Map Rotation: 0  
 -- Saved By: AKAILAS on: 1/23/2024, 12:31:50 PM; File Path: I:\employ\eastgis\regis\proj1-PROJECTS\ConnectGlen\1190-Mill\_Point\_Solar2-APR\Mill\_Point\_94C\_Ex\_15.aprx; Layout Name: MP\_Fig15-3\_MineralSoilGroups-4-11x17L



- FACILITY COMPONENTS**
- ACCESS ROADS
  - ARRAY PANELS
  - SUBSTATION
  - COLLECTION TRENCH
  - HDD BORE PITS
  - GRADING LIMITS
  - INVERTERS
  - LAYDOWN AREA
  - POI SWITCHYARD
  - POLES
  - FENCE LINE
  - LIMITS OF DISTURBANCE
  - FACILITY SITE
- MINERAL SOIL GROUP**
- MINERAL SOIL GROUP 1
  - MINERAL SOIL GROUP 2
  - MINERAL SOIL GROUP 3
  - MINERAL SOIL GROUP 4
- VILLAGE BOUNDARY
  - TOWN BOUNDARY

**NOTES:**  
 1. THIS FIGURE IS DESIGNED TO BE VIEWED OR PRINTED IN COLOR AT 11X17.

BASE MAP: ESRI WORLD IMAGERY SERVICE (3/30/2022)  
 DATA SOURCES: ESRI, USGS, NYS GIS, NRCS, USDA, NYSEEDA, TRC.



PROJECT: <b>CONNECTGLEN MONTGOMERY COUNTY LLC MILL POINT SOLAR I TOWN OF GLEN, MONTGOMERY COUNTY, NY</b>	
TITLE: <b>MINERAL SOIL GROUPS 1-4 IN THE FACILITY SITE</b>	
DRAWN BY: A. KAILAS	PROJ. NO.: 411360
CHECKED BY: C. PEARCE	<b>FIGURE 15-3 MAP 4 OF 7</b>
APPROVED BY: T. KONDAK	
DATE: JANUARY 2024	
3 CORPORATE DRIVE SUITE 202 CLIFTON PARK, NY 12065 PHONE: 518.348.1190	
FILE:	MILL_POINT_94C_EX_15APRX

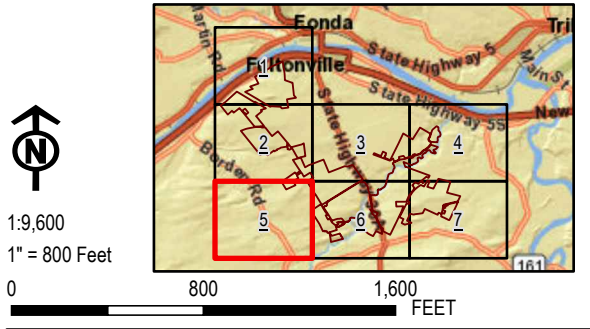
Coordinate System: NAD 1983 StatePlane New York East FIPS 3101 Feet; Map Rotation: 0  
 - Saved By: AKAILAS on 1/23/2024, 12:31:50 PM; File Path: \\emplyee\gis\regis\proj1-PROJECTS\ConnectGen\1180-Mill\_Point\_Solar2-APRX\Mill\_Point\_94C\_EX\_15.aprx; Layout Name: MP\_Fig15\_3\_MineralSoilGroups\_4\_11x17L



- FACILITY COMPONENTS**
- ACCESS ROADS
  - ARRAY PANELS
  - SUBSTATION
  - COLLECTION TRENCH
  - HDD BORE PITS
  - GRADING LIMITS
  - INVERTERS
  - LAYDOWN AREA
  - POI SWITCHYARD
  - POLES
  - FENCE LINE
  - LIMITS OF DISTURBANCE
  - FACILITY SITE
- MINERAL SOIL GROUP**
- MINERAL SOIL GROUP 1
  - MINERAL SOIL GROUP 2
  - MINERAL SOIL GROUP 3
  - MINERAL SOIL GROUP 4
- VILLAGE BOUNDARY
  - TOWN BOUNDARY

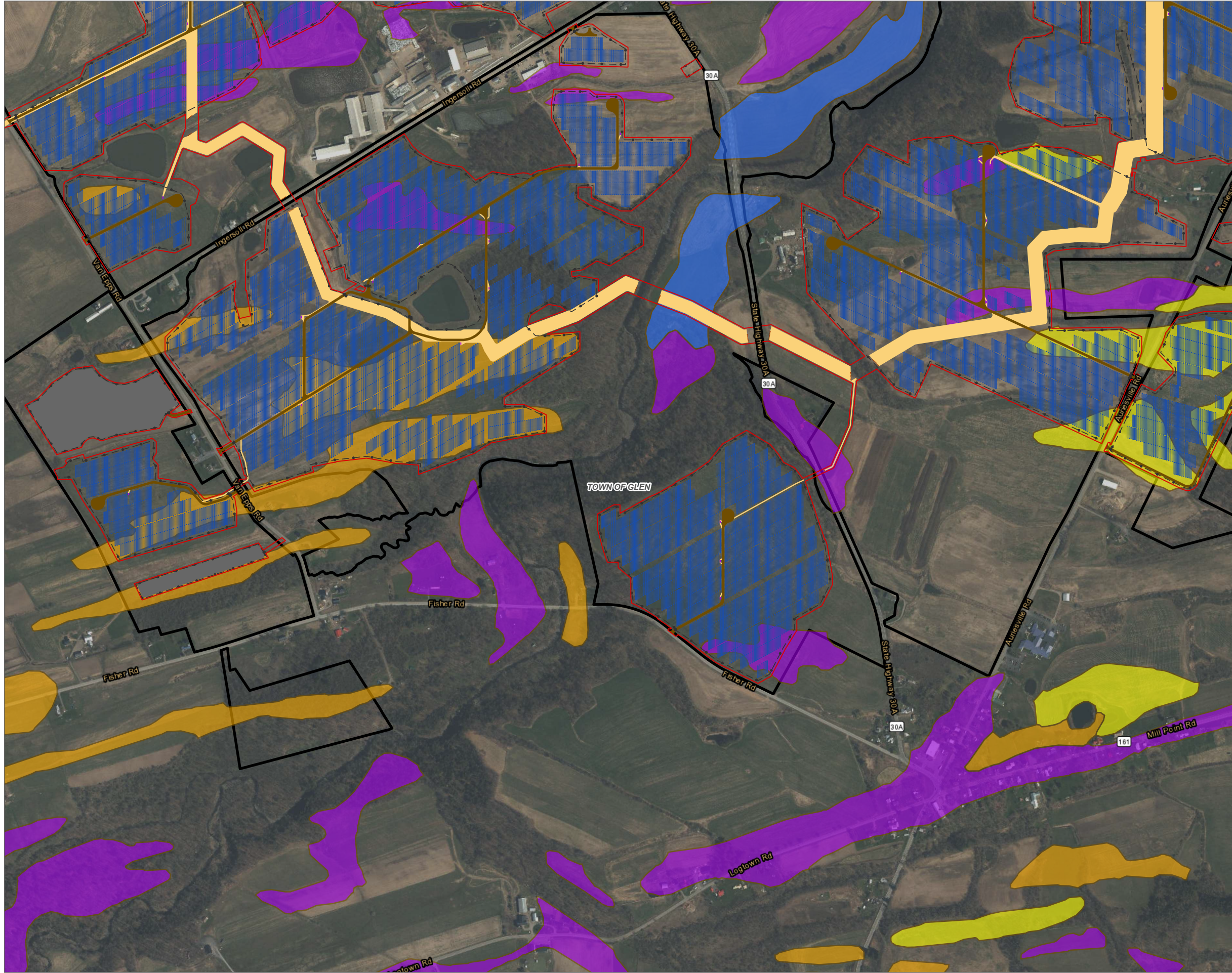
**NOTES:**  
 1. THIS FIGURE IS DESIGNED TO BE VIEWED OR PRINTED IN COLOR AT 11X17.

BASE MAP: ESRI WORLD IMAGERY SERVICE (3/30/2022)  
 DATA SOURCES: ESRI, USGS, NYS GIS, NRCS, USDA, NYSDERDA, TRC.



PROJECT: <b>CONNECTGEN MONTGOMERY COUNTY LLC MILL POINT SOLAR I TOWN OF GLEN, MONTGOMERY COUNTY, NY</b>	
TITLE: <b>MINERAL SOIL GROUPS 1-4 IN THE FACILITY SITE</b>	
DRAWN BY: A. KAILAS	PROJ. NO.: 411360
CHECKED BY: C. PEARCE	<b>FIGURE 15-3 MAP 5 OF 7</b>
APPROVED BY: T. KONDAK	
DATE: JANUARY 2024	
3 CORPORATE DRIVE SUITE 202 CLIFTON PARK, NY 12065 PHONE: 518.348.1190	
FILE:	MILL_POINT_94C_EX_15APRX

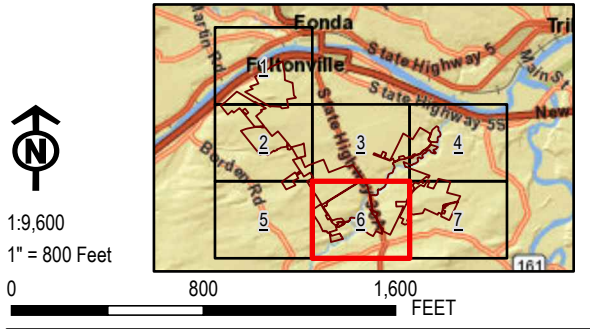
Coordinate System: NAD 1983 StatePlane New York East FIPS 3101 Feet; Map Rotation: 0  
 - Saved By: AKAILAS on: 1/23/2024, 12:31:50 PM; File Path: \\emplyee\gis\regis\proj1-PROJECTS\ConnectGlen\11980-Mill\_Point\_Solar2-APRX\Mill\_Point\_94C\_EX\_15.aprx; Layout Name: MP\_Fig15\_3\_MineralSoilGroups-4-11x17L



- FACILITY COMPONENTS**
- ACCESS ROADS
  - ARRAY PANELS
  - SUBSTATION
  - COLLECTION TRENCH
  - HDD BORE PITS
  - GRADING LIMITS
  - INVERTERS
  - LAYDOWN AREA
  - POI SWITCHYARD
  - POLES
  - FENCE LINE
  - LIMITS OF DISTURBANCE
  - FACILITY SITE
- MINERAL SOIL GROUP**
- MINERAL SOIL GROUP 1
  - MINERAL SOIL GROUP 2
  - MINERAL SOIL GROUP 3
  - MINERAL SOIL GROUP 4
- VILLAGE BOUNDARY
- TOWN BOUNDARY

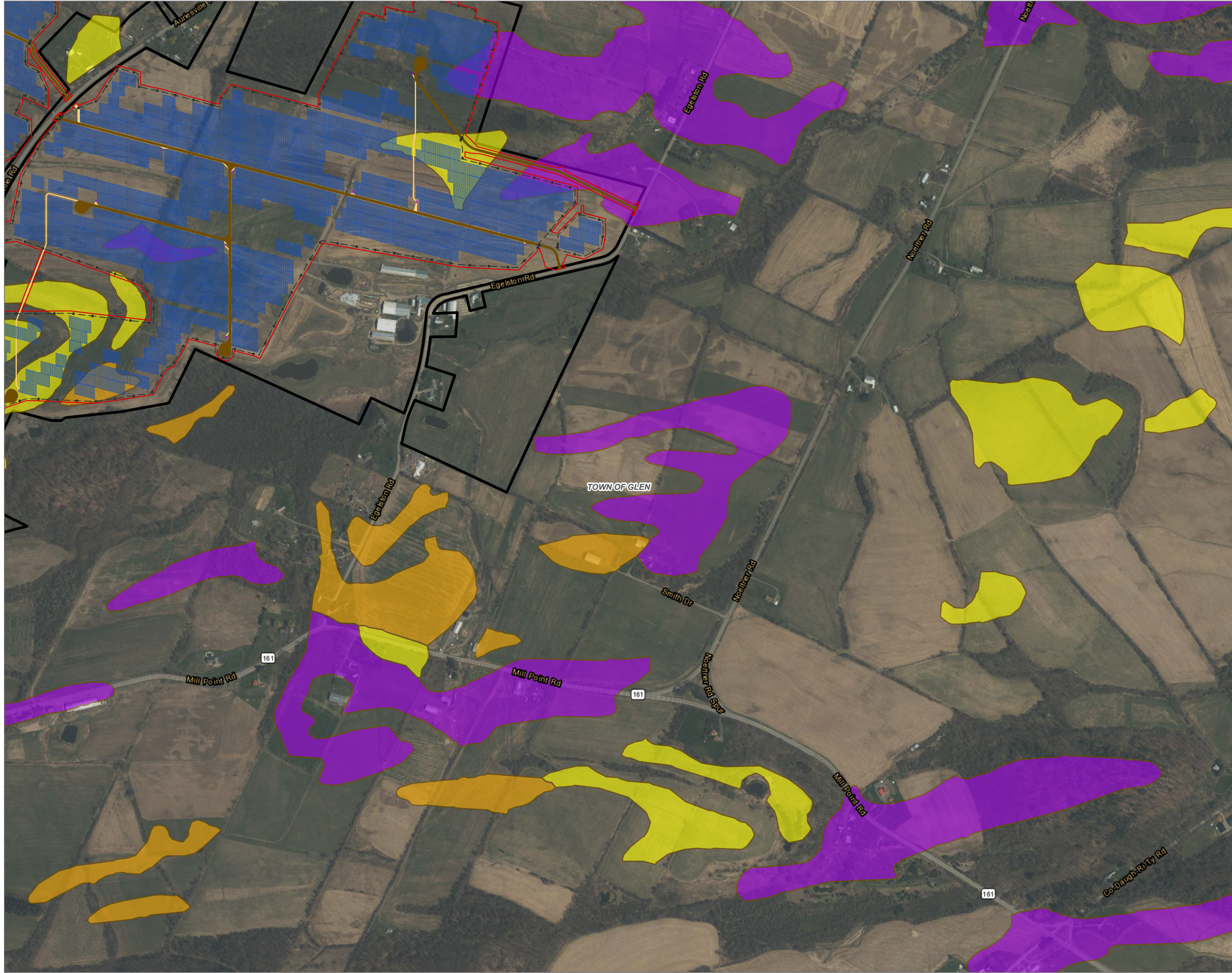
**NOTES:**  
 1. THIS FIGURE IS DESIGNED TO BE VIEWED OR PRINTED IN COLOR AT 11X17.

BASE MAP: ESRI WORLD IMAGERY SERVICE (3/30/2022)  
 DATA SOURCES: ESRI, USGS, NYS GIS, NRCS, USDA, NYSEEDA, TRC.



PROJECT: <b>CONNECTGLEN MONTGOMERY COUNTY LLC MILL POINT SOLAR I TOWN OF GLEN, MONTGOMERY COUNTY, NY</b>	
TITLE: <b>MINERAL SOIL GROUPS 1-4 IN THE FACILITY SITE</b>	
DRAWN BY: A. KAILAS	PROJ. NO.: 411360
CHECKED BY: C. PEARCE	<b>FIGURE 15-3 MAP 6 OF 7</b>
APPROVED BY: T. KONDAK	
DATE: JANUARY 2024	
3 CORPORATE DRIVE SUITE 202 CLIFTON PARK, NY 12065 PHONE: 518.348.1190	
FILE:	MILL_POINT_94C_EX_15.APRX

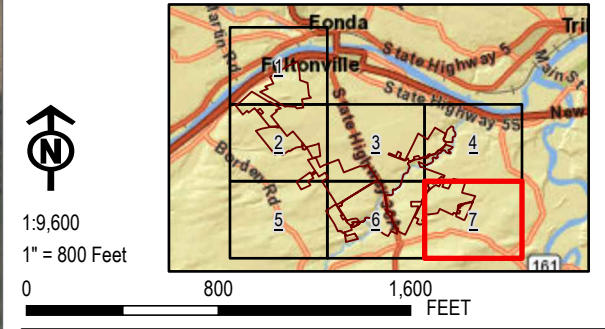
Coordinate System: NAD 1983 StatePlane New York East FIPS 3101 Feet; Map Rotation: 0  
 - Saved By: AKAILAS on 1/23/2024, 12:31:50 PM; File Path: \\emplyee\esg\regis\proj1-PROJECTS\ConnectGen\11980-Mill\_Point\_Solar2-APRX\Mill\_Point\_94C\_EX\_15.aprx; Layout Name: MP\_Fig15\_3\_MineralSoilGroups-4\_11x17L



- FACILITY COMPONENTS**
- ACCESS ROADS
  - ARRAY PANELS
  - SUBSTATION
  - COLLECTION TRENCH
  - HDD BORE PITS
  - GRADING LIMITS
  - INVERTERS
  - LAYDOWN AREA
  - POI SWITCHYARD
  - POLES
  - FENCE LINE
  - LIMITS OF DISTURBANCE
  - FACILITY SITE
- MINERAL SOIL GROUP**
- MINERAL SOIL GROUP 1
  - MINERAL SOIL GROUP 2
  - MINERAL SOIL GROUP 3
  - MINERAL SOIL GROUP 4
- VILLAGE BOUNDARY
- TOWN BOUNDARY

**NOTES:**  
 1. THIS FIGURE IS DESIGNED TO BE VIEWED OR PRINTED IN COLOR AT 11X17.

BASE MAP: ESRI WORLD IMAGERY SERVICE (3/30/2022)  
 DATA SOURCES: ESRI, USGS, NYS GIS, NRCS, USDA, NYSEEDA, TRC.



PROJECT: <b>CONNECTGEN MONTGOMERY COUNTY LLC MILL POINT SOLAR I TOWN OF GLEN, MONTGOMERY COUNTY, NY</b>	
TITLE: <b>MINERAL SOIL GROUPS 1-4 IN THE FACILITY SITE</b>	
DRAWN BY: A. KAILAS	PROJ. NO.: 411360
CHECKED BY: C. PEARCE	<b>FIGURE 15-3 MAP 7 OF 7</b>
APPROVED BY: T. KONDAK	
DATE: JANUARY 2024	
3 CORPORATE DRIVE SUITE 202 CLIFTON PARK, NY 12065 PHONE: 518.348.1190	
FILE:	MILL_POINT_94C_EX_15APRX