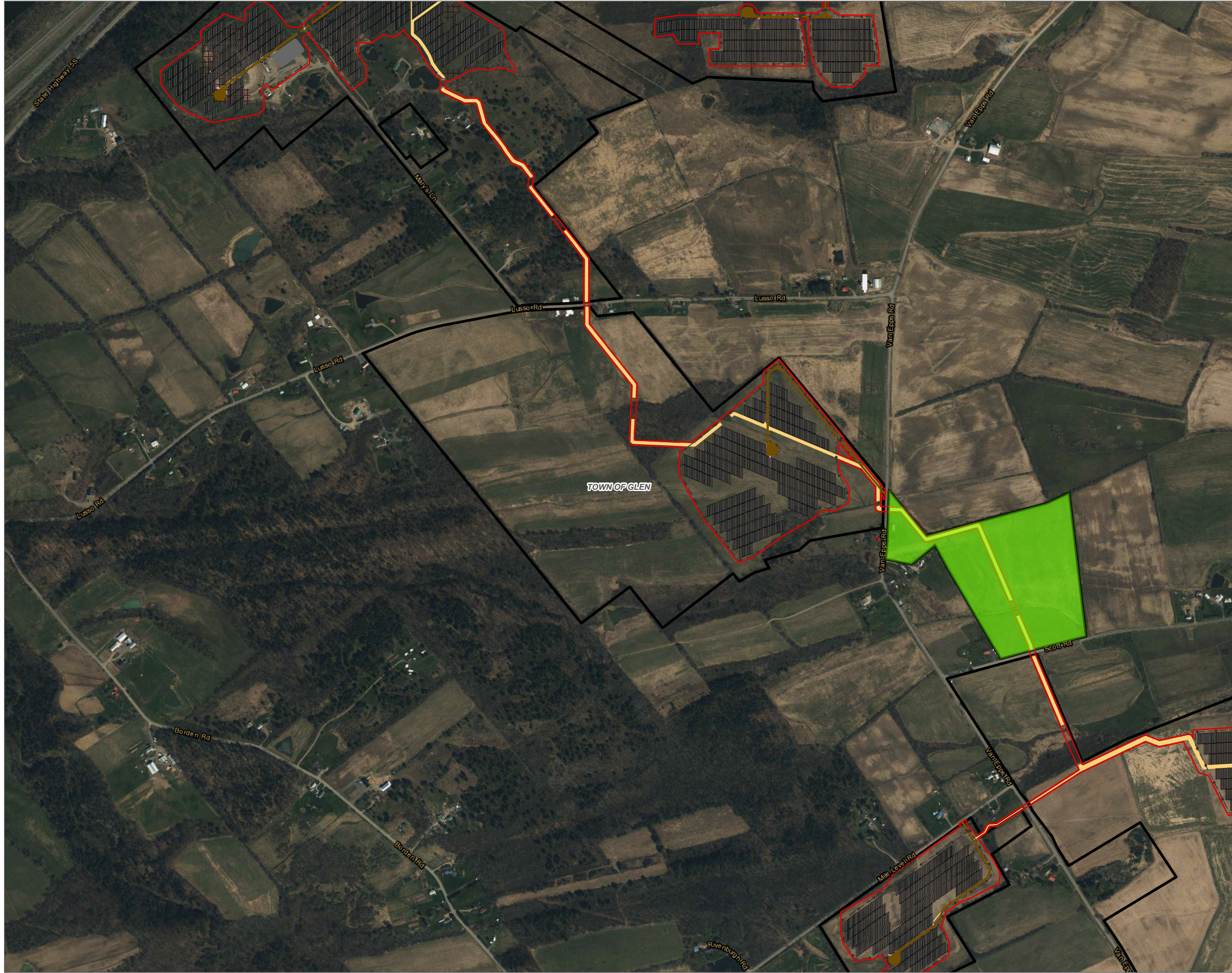




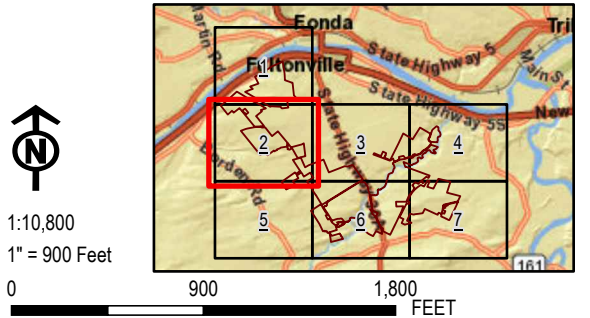
Coordinate System: NAD 1983 StatePlane New York East FIPS 3101 Feet; Map Rotation: 0  
 -- Saved By: AKAILAS on 1/23/2024, 15:20:48 PM; File Path: \\emplyee\gis\proj\1-PROJECTS\ConnectGen\11980-Mill\_Point\_Solar2-APR\1-Mill\_Point\_94C\_EX\_15.aprx; Layout Name: MP\_Fig15-4\_Agricultural\_Land\_Bo\_Remain\_11x17L



- CONTINUED AGRICULTURAL LAND
- FACILITY SITE
- VILLAGE BOUNDARY
- TOWN BOUNDARY
- FACILITY COMPONENT**
- ACCESS ROADS
- ARRAY PANELS
- SUBSTATION
- COLLECTION TRENCH
- GRADING LIMITS
- HDD BORE PITS
- INVERTERS
- LAYDOWN AREA
- POI SWITCHYARD
- POLES
- FENCE LINE
- LIMITS OF DISTURBANCE

**NOTES:**  
 1. THIS FIGURE IS DESIGNED TO BE VIEWED OR PRINTED IN COLOR AT 11X17.

BASE MAP: ESRI WORLD IMAGERY SERVICE (3/30/2022)  
 DATA SOURCES: ESRI, USGS, NYS GIS, TRC.



PROJECT: <b>CONNECTGEN MONTGOMERY COUNTY LLC MILL POINT SOLAR I TOWN OF GLEN, MONTGOMERY COUNTY, NY</b>	
TITLE: <b>AGRICULTURAL LAND TO REMAIN IN PRODUCTION IN THE FACILITY SITE</b>	
DRAWN BY: A. KAILAS	PROJ. NO.: 411360
CHECKED BY: C. PEARCE	<b>FIGURE 15-4 MAP 2 OF 7</b>
APPROVED BY: T. KONDAK	
DATE: JANUARY 2024	
<b>TRC</b>	
3 CORPORATE DRIVE SUITE 202 CLIFTON PARK, NY 12065 PHONE: 518.348.1190	
FILE:	MILL_POINT_94C_EX_15APRX

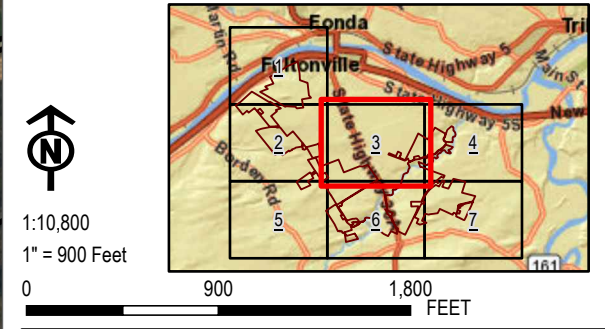
Coordinate System: NAD 1983 StatePlane New York East FIPS 3101 Feet, Map Rotation: 0  
 -- Saved By: AKAILAS on 1/23/2024, 15:20:48 PM, File Path: I:\mpley\esgis\regis\proj1-PROJECTS\ConnectGen\411360\Mill\_Point\_Solar2-APRX\Mill\_Point\_94C\_Ex\_15.aprx, Layout Name: MP\_Fig15-4\_Agricultural\_Land\_Remain\_11x17L



- CONTINUED AGRICULTURAL LAND
- FACILITY SITE
- VILLAGE BOUNDARY
- TOWN BOUNDARY
- FACILITY COMPONENT**
- ACCESS ROADS
- ARRAY PANELS
- SUBSTATION
- COLLECTION TRENCH
- GRADING LIMITS
- HDD BORE PITS
- INVERTERS
- LAYDOWN AREA
- POI SWITCHYARD
- POLES
- FENCE LINE
- LIMITS OF DISTURBANCE

**NOTES:**  
 1. THIS FIGURE IS DESIGNED TO BE VIEWED OR PRINTED IN COLOR AT 11X17.

BASE MAP: ESRI WORLD IMAGERY SERVICE (3/30/2022)  
 DATA SOURCES: ESRI, USGS, NYS GIS, TRC.



PROJECT:		<b>CONNECTGEN MONTGOMERY COUNTY LLC MILL POINT SOLAR I TOWN OF GLEN, MONTGOMERY COUNTY, NY</b>	
TITLE:		<b>AGRICULTURAL LAND TO REMAIN IN PRODUCTION IN THE FACILITY SITE</b>	
DRAWN BY:	A. KAILAS	PROJ. NO.:	411360
CHECKED BY:	C. PEARCE	<b>FIGURE 15-4 MAP 3 OF 7</b>	
APPROVED BY:	T. KONDAK		
DATE:	JANUARY 2024		
		3 CORPORATE DRIVE SUITE 202 CLIFTON PARK, NY 12065 PHONE: 518.348.1190	
FILE:	MILL_POINT_94C_EX_15.APRX		

Coordinate System: NAD 1983 StatePlane New York East FIPS 3101 Feet; Map Rotation: 0  
 - Saved By: AKAILAS on 1/23/2024, 15:20:48 PM; File Path: I:\employeestgs\eng\proj1-PROJECTS\ConnectGen\11960-Mill\_Point\_Solar2-APR\Mill\_Point\_94C\_Ex\_15.aprx; Layout Name: MP\_Fig15\_4\_Agricultural\_Land\_0\_Remain\_11x17L



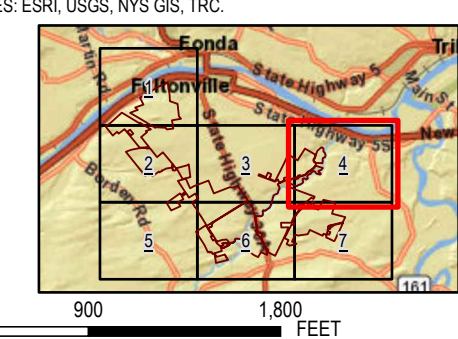
- CONTINUED AGRICULTURAL LAND
- FACILITY SITE
- VILLAGE BOUNDARY
- TOWN BOUNDARY
- FACILITY COMPONENT**
- ACCESS ROADS
- ARRAY PANELS
- SUBSTATION
- COLLECTION TRENCH
- GRADING LIMITS
- HDD BORE PITS
- INVERTERS
- LAYDOWN AREA
- POI SWITCHYARD
- POLES
- FENCE LINE
- LIMITS OF DISTURBANCE

**NOTES:**  
 1. THIS FIGURE IS DESIGNED TO BE VIEWED OR PRINTED IN COLOR AT 11X17.

BASE MAP: ESRI WORLD IMAGERY SERVICE (3/30/2022)  
 DATA SOURCES: ESRI, USGS, NYS GIS, TRC.



1:10,800  
 1" = 900 Feet



PROJECT: <b>CONNECTGEN MONTGOMERY COUNTY LLC MILL POINT SOLAR I TOWN OF GLEN, MONTGOMERY COUNTY, NY</b>	
TITLE: <b>AGRICULTURAL LAND TO REMAIN IN PRODUCTION IN THE FACILITY SITE</b>	
DRAWN BY: A. KAILAS	PROJ. NO.: 411360
CHECKED BY: C. PEARCE	<b>FIGURE 15-4 MAP 4 OF 7</b>
APPROVED BY: T. KONDAK	
DATE: JANUARY 2024	
3 CORPORATE DRIVE SUITE 202 CLIFTON PARK, NY 12065 PHONE: 518.348.1190	
FILE:	MILL_POINT_94C_EX_15.APRX

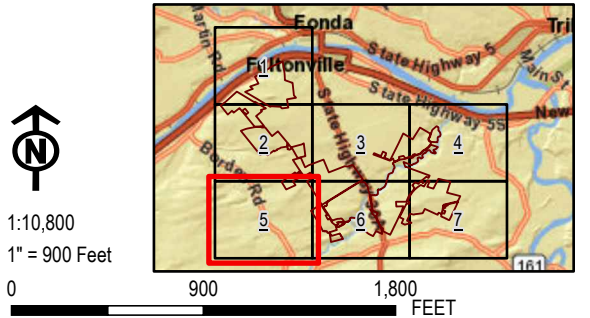
Coordinate System: NAD 1983 StatePlane New York East FIPS 3101 Feet; Map Rotation: 0  
 - Saved By: AKAILAS on 1/23/2024, 15:20:48 PM; File Path: I:\employeestgs\eng\proj1-PROJECTS\ConnectGlen\11960-Mill\_Point\_Solar2-APRX\Mill\_Point\_94C\_EX\_15.aprx; Layout Name: MP\_Fig15\_4\_Agricultural\_Land\_0\_Remain\_11x17L



- CONTINUED AGRICULTURAL LAND
- FACILITY SITE
- VILLAGE BOUNDARY
- TOWN BOUNDARY
- FACILITY COMPONENT**
- ACCESS ROADS
- ARRAY PANELS
- SUBSTATION
- COLLECTION TRENCH
- GRADING LIMITS
- HDD BORE PITS
- INVERTERS
- LAYDOWN AREA
- POI SWITCHYARD
- POLES
- FENCE LINE
- LIMITS OF DISTURBANCE

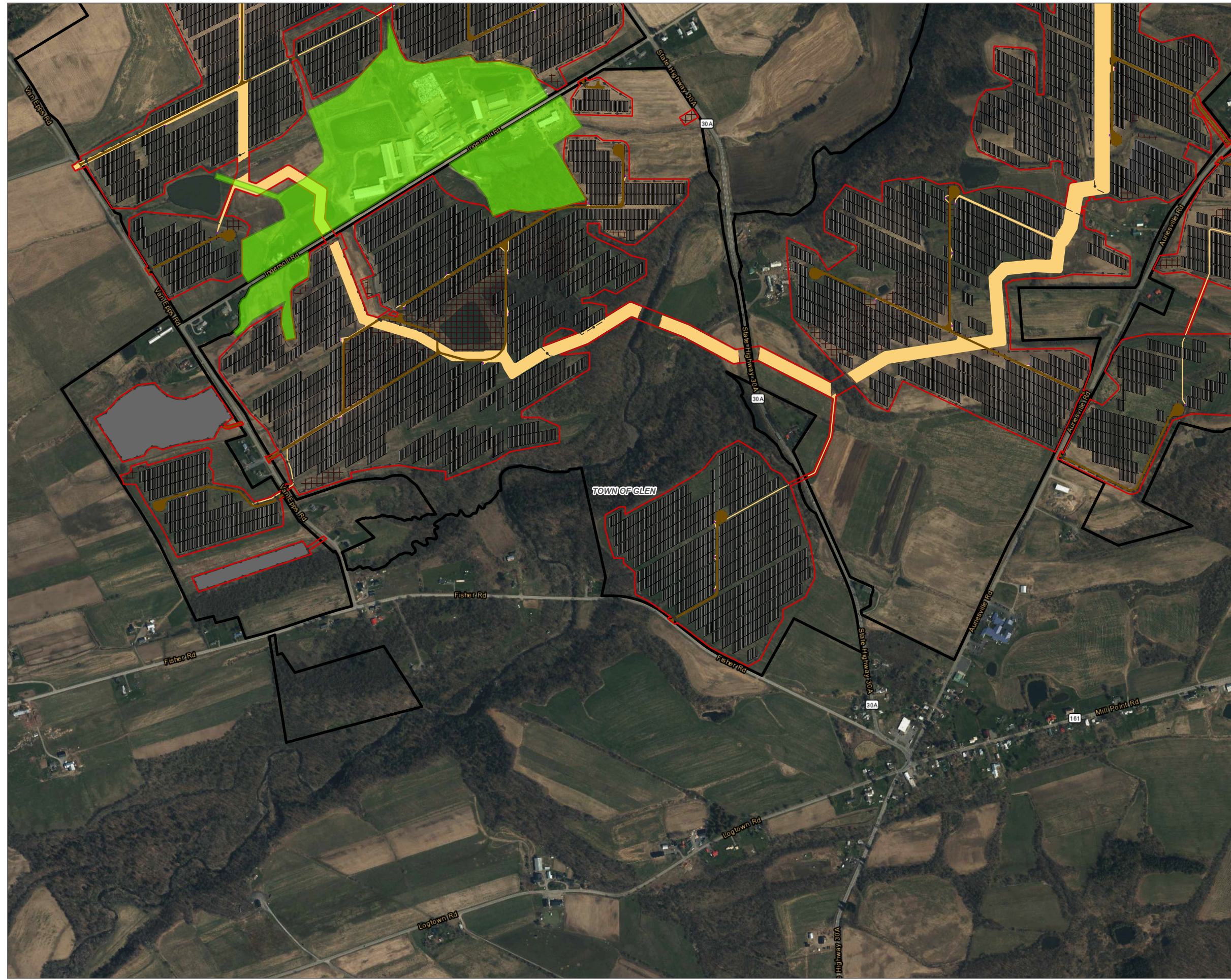
**NOTES:**  
 1. THIS FIGURE IS DESIGNED TO BE VIEWED OR PRINTED IN COLOR AT 11X17.

BASE MAP: ESRI WORLD IMAGERY SERVICE (3/30/2022)  
 DATA SOURCES: ESRI, USGS, NYS GIS, TRC.



PROJECT: <b>CONNECTGLEN MONTGOMERY COUNTY LLC MILL POINT SOLAR I TOWN OF GLEN, MONTGOMERY COUNTY, NY</b>	
TITLE: <b>AGRICULTURAL LAND TO REMAIN IN PRODUCTION IN THE FACILITY SITE</b>	
DRAWN BY: A. KAILAS	PROJ. NO.: 411360
CHECKED BY: C. PEARCE	<b>FIGURE 15-4 MAP 5 OF 7</b>
APPROVED BY: T. KONDAK	
DATE: JANUARY 2024	
<b>TRC</b>	
3 CORPORATE DRIVE SUITE 202 CLIFTON PARK, NY 12065 PHONE: 518.348.1190	
FILE:	MILL_POINT_94C_EX_15APRX

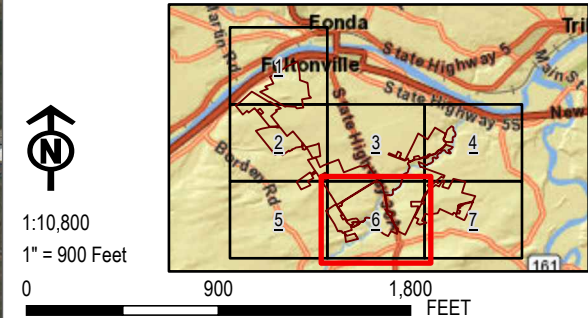
Coordinate System: NAD 1983 StatePlane New York East FIPS 3101 Feet; Map Rotation: 0  
 - Saved By: AKAILAS on 1/23/2024, 15:20:48 PM; File Path: I:\employeestgs\eng\proj1-PROJECTS\ConnectGen\1190-Mill\_Point\_Solar2-APRX\Mill\_Point\_94C\_EX\_15.aprx; Layout Name: MP\_Fig15-4\_Agricultural\_Land\_6\_Remain\_11x17L



- CONTINUED AGRICULTURAL LAND
- FACILITY SITE
- VILLAGE BOUNDARY
- TOWN BOUNDARY
- FACILITY COMPONENT**
- ACCESS ROADS
- ARRAY PANELS
- SUBSTATION
- COLLECTION TRENCH
- GRADING LIMITS
- HDD BORE PITS
- INVERTERS
- LAYDOWN AREA
- POI SWITCHYARD
- POLES
- FENCE LINE
- LIMITS OF DISTURBANCE

**NOTES:**  
 1. THIS FIGURE IS DESIGNED TO BE VIEWED OR PRINTED IN COLOR AT 11X17.

BASE MAP: ESRI WORLD IMAGERY SERVICE (3/30/2022)  
 DATA SOURCES: ESRI, USGS, NYS GIS, TRC.



<b>PROJECT:</b> CONNECTGEN MONTGOMERY COUNTY LLC MILL POINT SOLAR I TOWN OF GLEN, MONTGOMERY COUNTY, NY	
<b>TITLE:</b> AGRICULTURAL LAND TO REMAIN IN PRODUCTION IN THE FACILITY SITE	
DRAWN BY: A. KAILAS	PROJ. NO.: 411360
CHECKED BY: C. PEARCE	<b>FIGURE 15-4</b> MAP 6 OF 7
APPROVED BY: T. KONDAK	
DATE: JANUARY 2024	
3 CORPORATE DRIVE SUITE 202 CLIFTON PARK, NY 12065 PHONE: 518.348.1190	
FILE: MILL_POINT_94C_EX_15APRX	

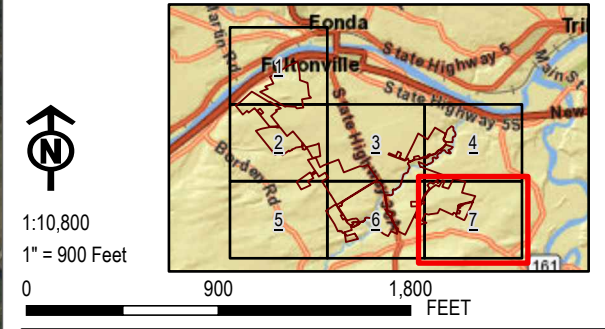
Coordinate System: NAD 1983 StatePlane New York East FIPS 3101 Feet; Map Rotation: 0  
 - Saved By: AKAILAS on 1/23/2024, 15:20:48 PM; File Path: I:\employeestgs\regis\proj1-PROJECTS\ConnectGlen\11960-Mill\_Point\_Solar2-APRX\Mill\_Point\_94C\_EX\_15.aprx; Layout Name: MP\_Fig15\_4\_Agricultural\_Land\_0\_Remain\_11X17L



- CONTINUED AGRICULTURAL LAND
- FACILITY SITE
- VILLAGE BOUNDARY
- TOWN BOUNDARY
- FACILITY COMPONENT**
- ACCESS ROADS
- ARRAY PANELS
- SUBSTATION
- COLLECTION TRENCH
- GRADING LIMITS
- HDD BORE PITS
- INVERTERS
- LAYDOWN AREA
- POI SWITCHYARD
- POLES
- FENCE LINE
- LIMITS OF DISTURBANCE

**NOTES:**  
 1. THIS FIGURE IS DESIGNED TO BE VIEWED OR PRINTED IN COLOR AT 11X17.

BASE MAP: ESRI WORLD IMAGERY SERVICE (3/30/2022)  
 DATA SOURCES: ESRI, USGS, NYS GIS, TRC.



<b>PROJECT:</b> CONNECTGEN MONTGOMERY COUNTY LLC MILL POINT SOLAR I TOWN OF GLEN, MONTGOMERY COUNTY, NY	
<b>TITLE:</b> AGRICULTURAL LAND TO REMAIN IN PRODUCTION IN THE FACILITY SITE	
DRAWN BY: A. KAILAS	PROJ. NO.: 411360
CHECKED BY: C. PEARCE	<b>FIGURE 15-4</b> MAP 7 OF 7
APPROVED BY: T. KONDAK	
DATE: JANUARY 2024	
3 CORPORATE DRIVE SUITE 202 CLIFTON PARK, NY 12065 PHONE: 518.348.1190	
FILE: MILL_POINT_94C_EX_15APRX	