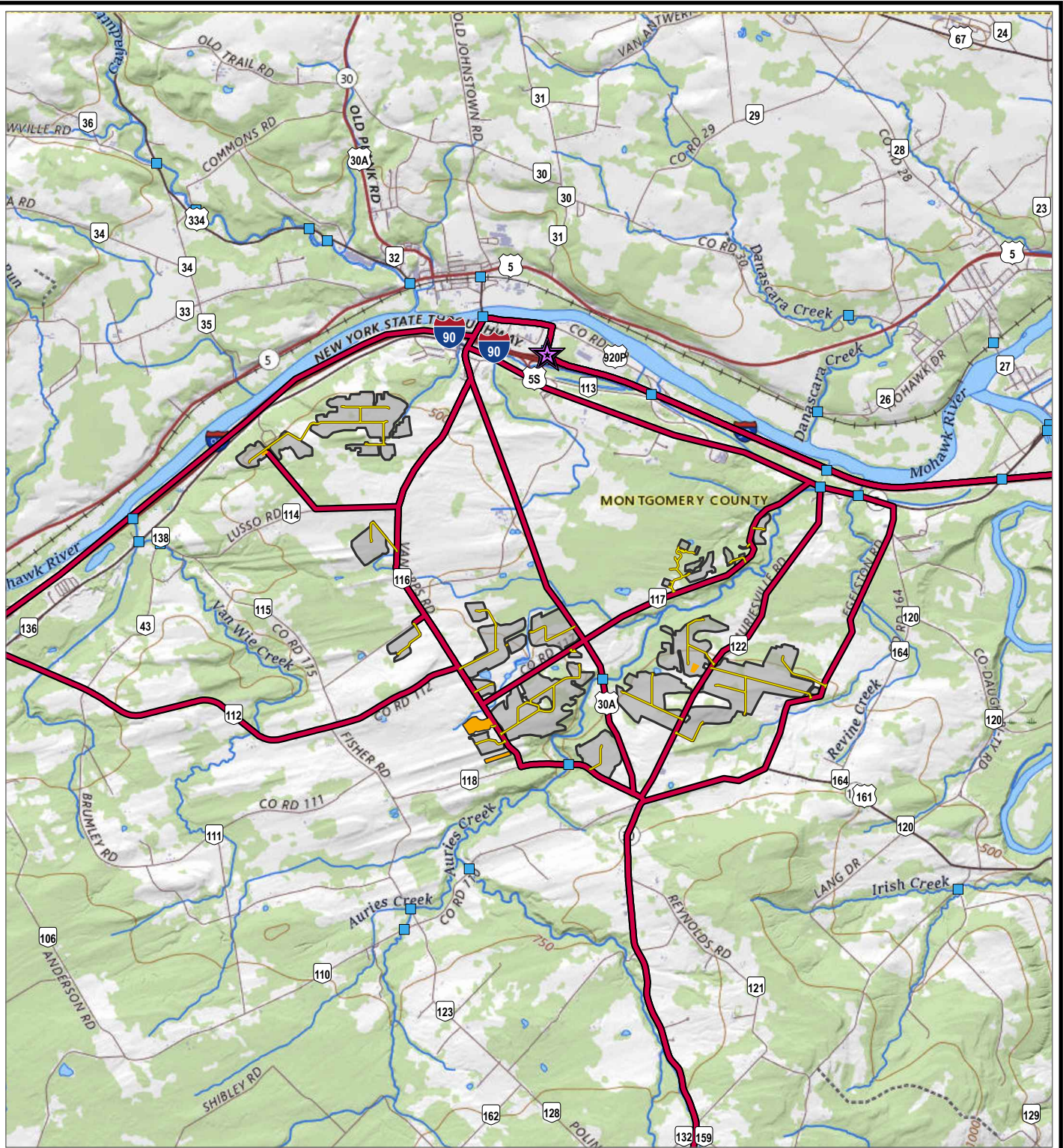


Coordinate System: NAD 1983 StatePlane New York East FIPS 3101 Feet; Map Rotation: 0
 -- Saved By: AKAILAS on 1/11/2024, 09:38:55AM; File Path: \\emplyee\gstar\gstar\proj1-PROJECTS\ConnectGen\411360-Mill_Point_Solar2-APPX\Mill_Point_94C_Ex_16.aprx; Layout Name: MP_Fig16_1_HaulRoutes_8x11



	BRIDGE (NYS DOT)
	PROPOSED TRUCK STAGING AREA
	HAUL ROUTE
	ACCESS ROADS
	FENCED AREA
	LAYDOWN YARDS

BASE MAP: USGS NATIONAL MAP
 DATA SOURCES: ESRI, NYSGIS, TRC, NYSDOT

0 3,000 6,000
 FEET
 1:72,000 1" = 6,000'

NEW YORK OVERVIEW

SITE LOCATION

PROJECT:		MILL POINT SOLAR I PROJECT	
		CONNECTGEN MONTGOMERY COUNTY LLC	
		TOWN OF GLEN, MONTGOMERY COUNTY, NEW YORK	
TITLE:		DRAFT HAUL ROUTE	
DRAWN BY:	A. KAILAS	PROJ. NO.:	411360
CHECKED BY:	C. PEARCE	FIGURE 16-1	
APPROVED BY:	T. KONDAK		
DATE:	JANUARY 2024		
		3 CORPORATE DRIVE SUITE 202 CLIFTON PARK, NY 12065 PHONE: 518.348.1190	
		FILE:	Mill_Point_94C_Ex_16.APRX