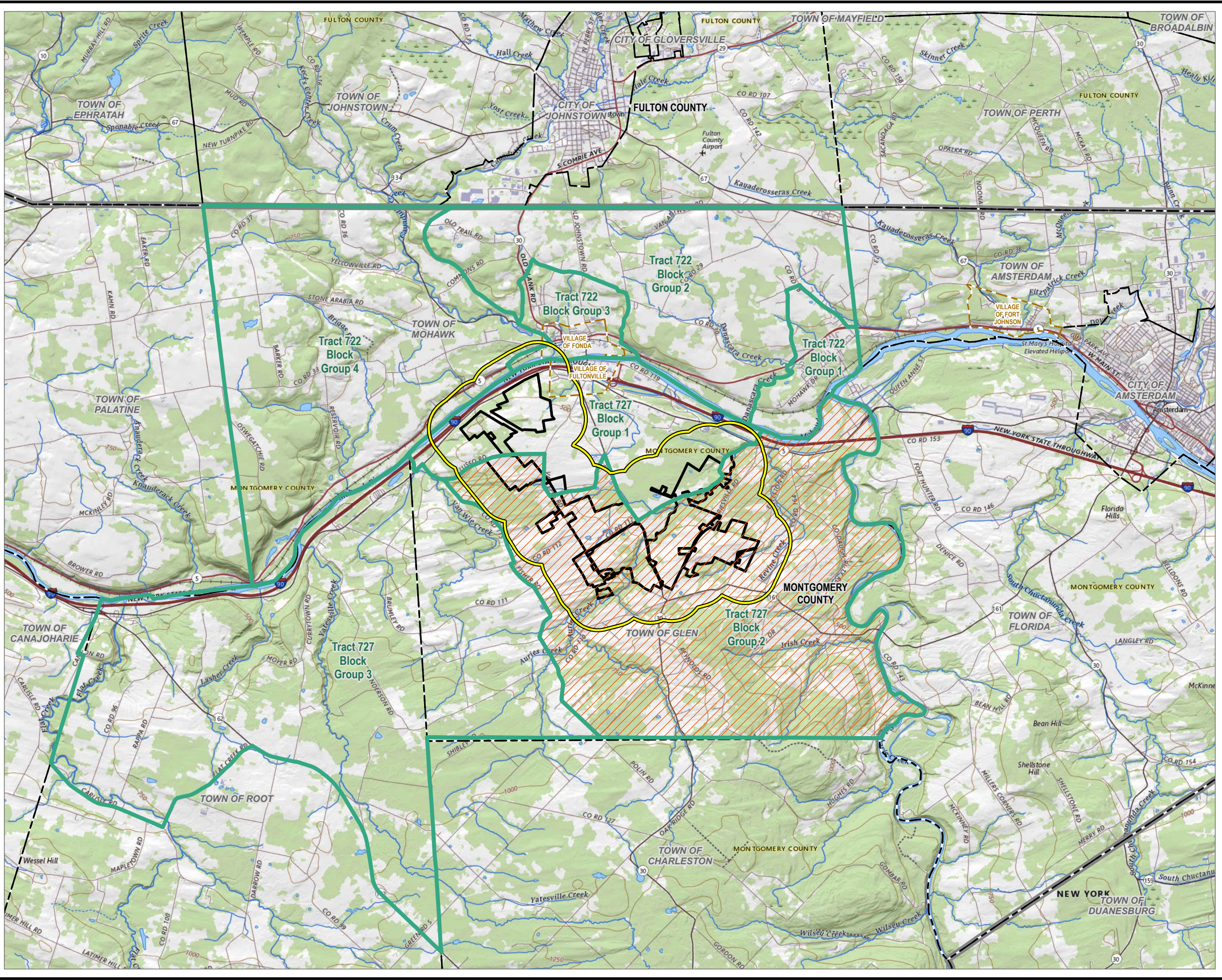


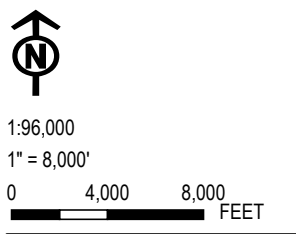
Coordinate System: NAD 1983 StatePlane New York East FIPS 3101 Feet; Map Rotation: 0
 - Saved By: AKAILAS on 1/18/2024, 12:57:10 PM; File Path: \\emplyee\gis\trc\proj\1-PROJECTS\ConnectGen411360-Mill_Point_Solar1-APPROX\Mill_Point_94C_Ex19.aprx; Layout Name: MP_Fig19-1_PEA_11X17.rtl



- HALF MILE BUFFER
- US CENSUS BLOCK GROUPS
- POTENTIAL ENVIRONMENTAL JUSTICE AREA
- VILLAGE BOUNDARY
- TOWN BOUNDARY
- FACILITY SITE
- COUNTY BOUNDARY

NOTES:
 1. THIS FIGURE IS DESIGNED TO BE VIEWED OR PRINTED IN COLOR AT 11X17.

BASE MAP: USGS, THE NATIONAL MAP TOPO, APRIL 2023.
 DATA SOURCES: ESRI, USGS, NYSGIS, CENSUS BUREAU, AMERICAN COMMUNITY SURVEY, V2021.



PROJECT:		CONNECTGEN MONTGOMERY COUNTY LLC MILL POINT SOLAR I TOWN OF GLEN, MONTGOMERY COUNTY, NY	
TITLE: POTENTIAL ENVIRONMENTAL JUSTICE AREA IN THE 0.5-MILE BUFFER			
DRAWN BY:	A. KAILAS	PROJ. NO.:	411360
CHECKED BY:	D. REILLY	FIGURE 19-1	
APPROVED BY:	T. KONDAK		
DATE:	JANUARY 2024		