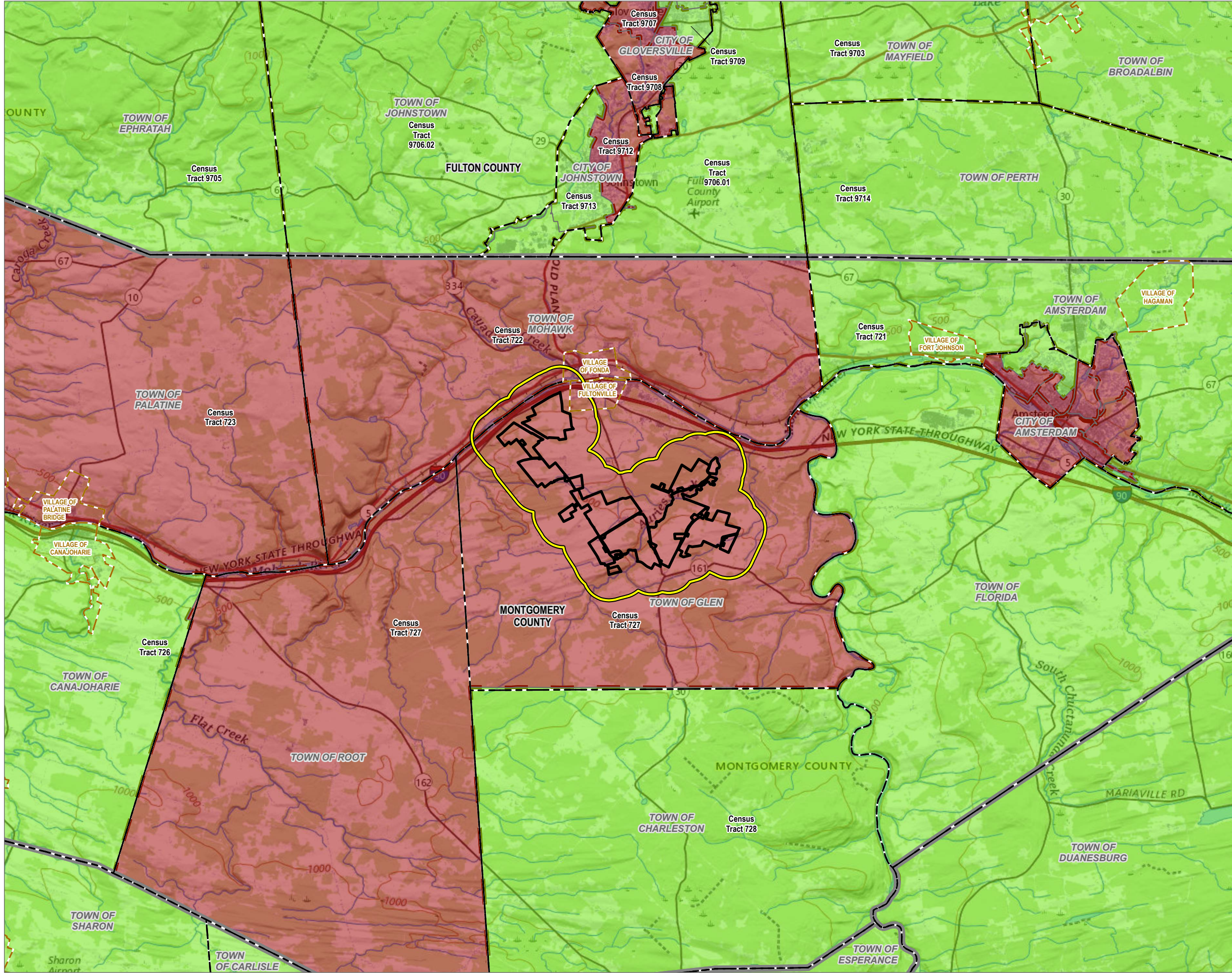


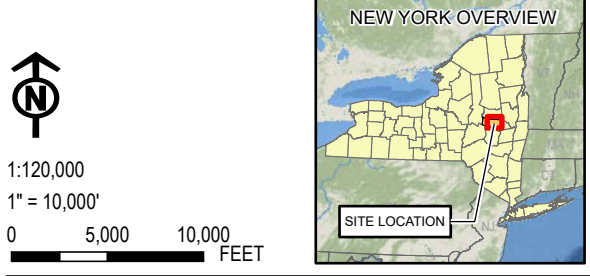
Coordinate System: NAD 1983 StatePlane New York East FIPS 3101 Feet, Map Rotation: 0
 - Saved By: AKAILAS on 1/18/2024, 14:06:34 PM, File Path: \\emplyeeesgiscorp\proj1\PROJECTS\ConnectGen411360-Mill_Point_Solar\A-APRX\Mill_Point_94C_Ext19.aprx, Layout Name: MP_Fig19-2_DAC-11X17L



- DESIGNATED AS DAC
- NOT DESIGNATED AS DAC
- HALF MILE BUFFER
- US CENSUS TRACT
- VILLAGE BOUNDARY
- TOWN BOUNDARY
- FACILITY SITE
- COUNTY BOUNDARY

NOTES:
 1. THIS FIGURE IS DESIGNED TO BE VIEWED OR PRINTED IN COLOR AT 11X17.

BASE MAP: USGS, THE NATIONAL MAP TOPO, APRIL 2023.
 DATA SOURCES: ESRI, USGS, NYSGIS, "DISADVANTAGED COMMUNITIES," NEW YORK CLIMATE JUSTICE WORKING GROUP (2023).



PROJECT:		CONNECTGEN MONTGOMERY COUNTY LLC MILL POINT SOLAR I TOWN OF GLEN, MONTGOMERY COUNTY, NY	
TITLE:		DISADVANTAGED COMMUNITIES IN VICINITY	
DRAWN BY:	A. KAILAS	PROJ. NO.:	411360
CHECKED BY:	D. REILLY	FIGURE 19-2	
APPROVED BY:	T. KONDAK		
DATE:	JANUARY 2024		