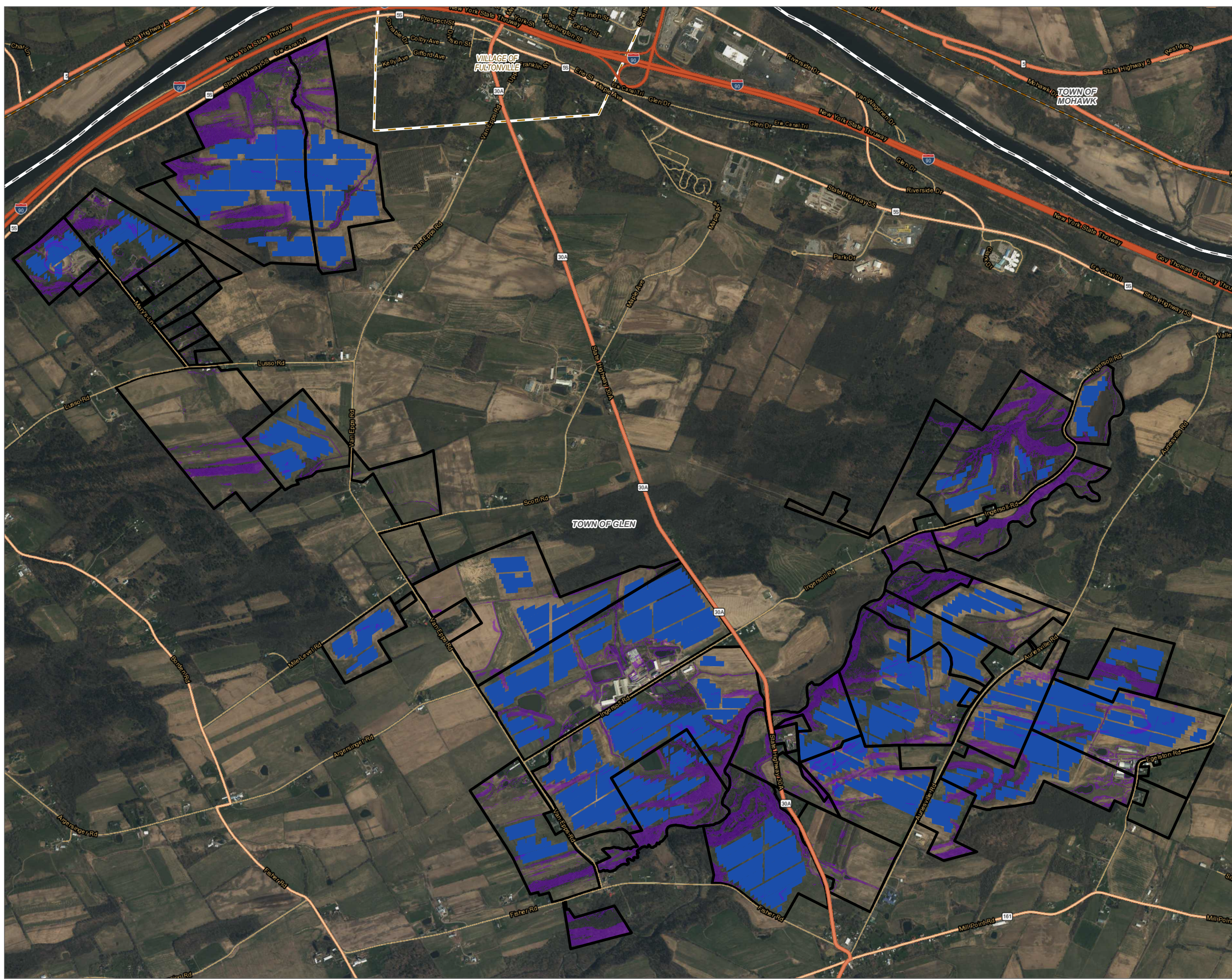


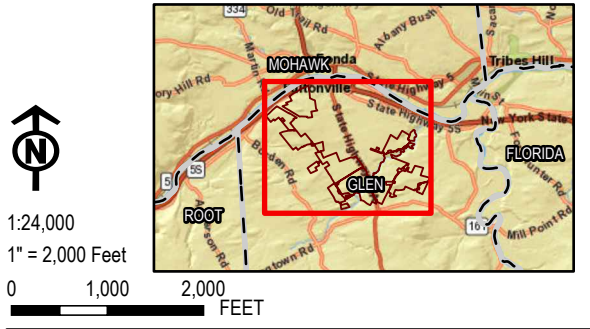
Figure 3. Slopes

Coordinate System: NAD 1983 StatePlane New York East FIPS 3101 Feet; Map Rotation: 0
 Saved By: AKAILAS on 12/29/2023 09:12:18 AM; File Path: \\ermpoysig\gis\arcgispro\1-PROJECTS\ConnectGEN411360-Mill_Point_Solar\2-APRX\Mill_Point_94C_EX24.aprx; Layout Name: MP1_Appendix04_Figure_3_Slopes_11x17L



- FACILITY SITE
- SLOPE 15%+
- ARRAY PANELS
- TOWN BOUNDARY
- VILLAGE BOUNDARY

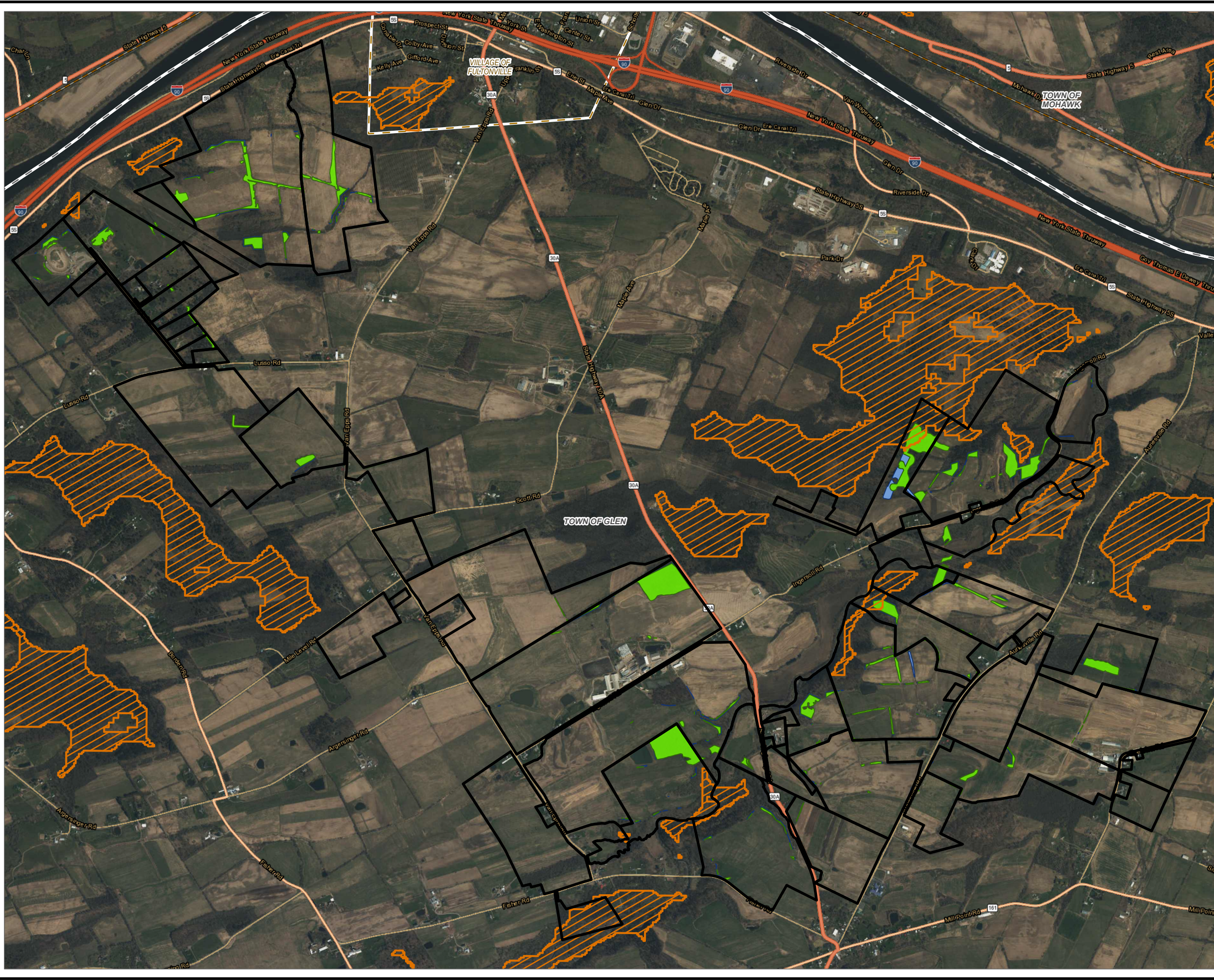
BASE MAP: ESRI WORLD IMAGERY SERVICE (3/30/2022)
 DATA SOURCES: ESRI, USGS, NYS GIS, TRC.



PROJECT:		CONNECTGEN MONTGOMERY COUNTY LLC MILL POINT SOLAR I TOWN OF GLEN, MONTGOMERY COUNTY, NY	
TITLE: SLOPES			
DRAWN BY:	A. KAILAS	PROJ. NO.:	411360
CHECKED BY:	C. PEARCE	FIGURE 3	
APPROVED BY:	T. KONDAK		
DATE:	DECEMBER 2023		
		3 CORPORATE DRIVE SUITE 202 CLIFTON PARK, NY 12065 PHONE: 518.348.1190	
FILE:	MILL_POINT_94C_EX24.APRX		

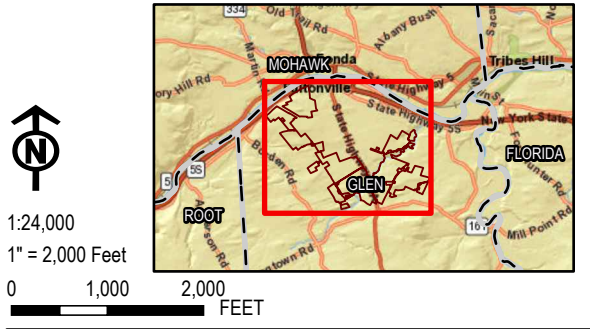
Figure 4. Tree Clearing

Coordinate System: NAD 1983 StatePlane New York East FIPS 3101 Feet; Map Rotation: 0
 - Saved By: AKAILAS on 12/29/2023 09:12:18 AM; File Path: \\employees\gis\arcgispro\1-PROJECTS\ConnectGen\411360-Mill_Point_Solar\2-APRX\Mill_Point_94C_EX24.aprx; Layout Name: MP1_Appendix24_Figure_4_Tree_Clearing_TTX.TTL



- CLEARING
- CLEARING AND GRUBBING
- APPROXIMATE CORE FOREST BLOCKS
- FACILITY SITE
- TOWN BOUNDARY
- VILLAGE BOUNDARY

BASE MAP: ESRI WORLD IMAGERY SERVICE (3/30/2022)
 DATA SOURCES: ESRI, USGS, NYS GIS, NLCD, USDA, TRC.

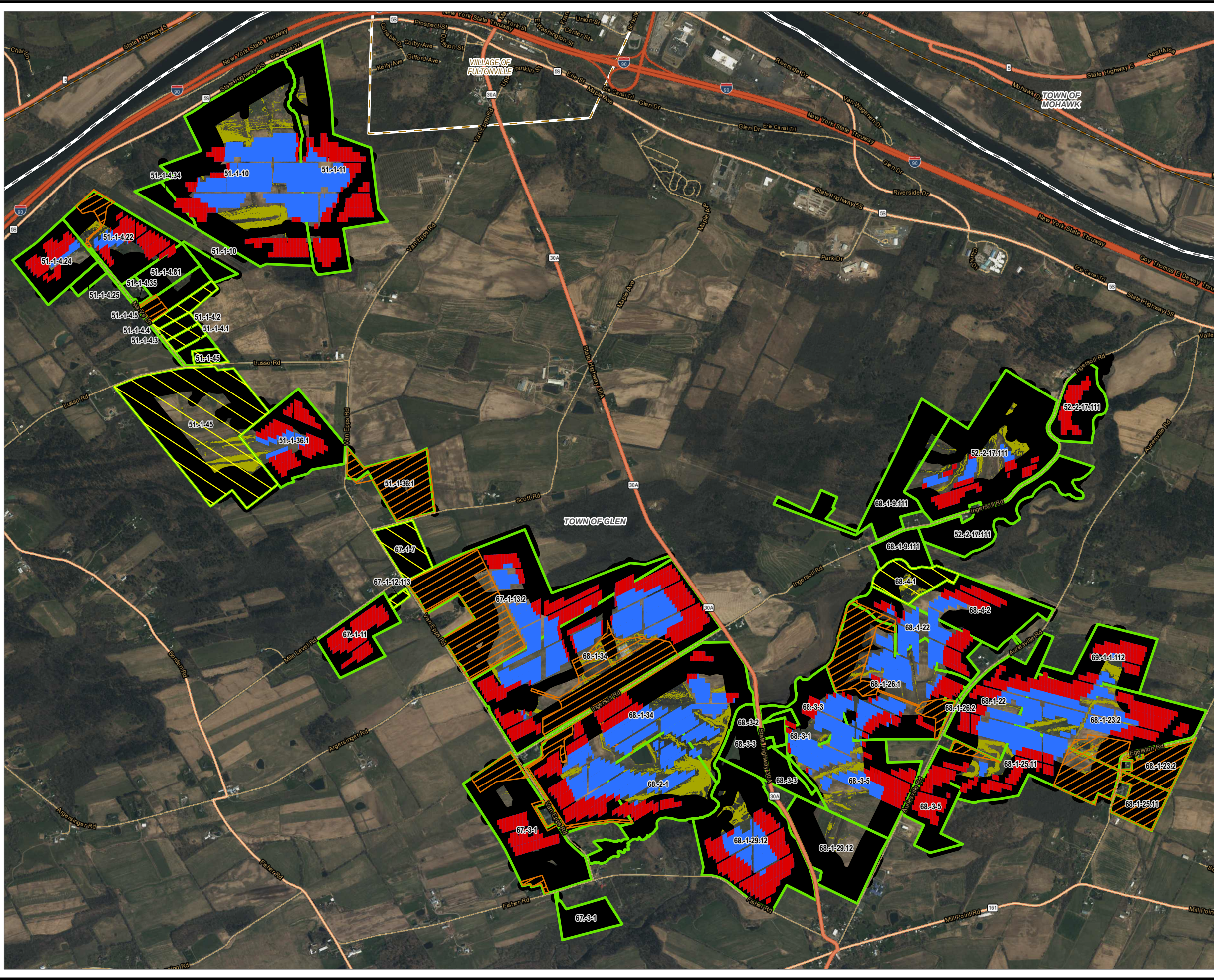


1:24,000
 1" = 2,000 Feet
 0 1,000 2,000 FEET

PROJECT:		CONNECTGEN MONTGOMERY COUNTY LLC MILL POINT SOLAR I TOWN OF GLEN, MONTGOMERY COUNTY, NY	
TITLE: TREE CLEARING			
DRAWN BY:	A. KAILAS	PROJ. NO.:	411360
CHECKED BY:	C. PEARCE	FIGURE 4	
APPROVED BY:	T. KONDAK		
DATE:	DECEMBER 2023		
		3 CORPORATE DRIVE SUITE 202 CLIFTON PARK, NY 12065 PHONE: 518.348.1190	
FILE:	MILL_POINT_94C_EX24.APRX		

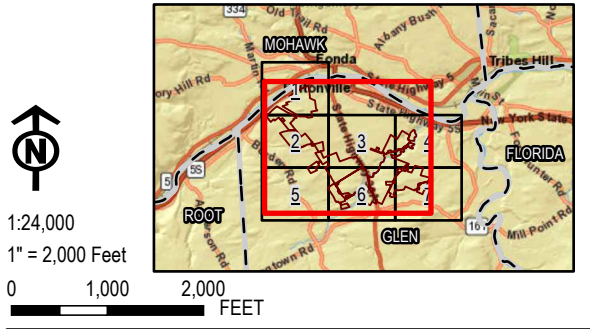
Figure 5. Buildable Area Reduction

Coordinate System: NAD 1983 StatePlane New York East FIPS 3101 Feet, Map Rotation: 0
 - Saved By: AKAILAS on 1/24/2024, 10:15:06 AM, File Path: \\mpt\employees\gis\stg\proj1-PROJ\PROJECTS\ConnectGen\411360-Mill_Point_Solar2\APRX\Mill_Point_94C_EX24.aprx, Layout Name: MPT_Appendix24-Figure_5_Overview_T1xT1L



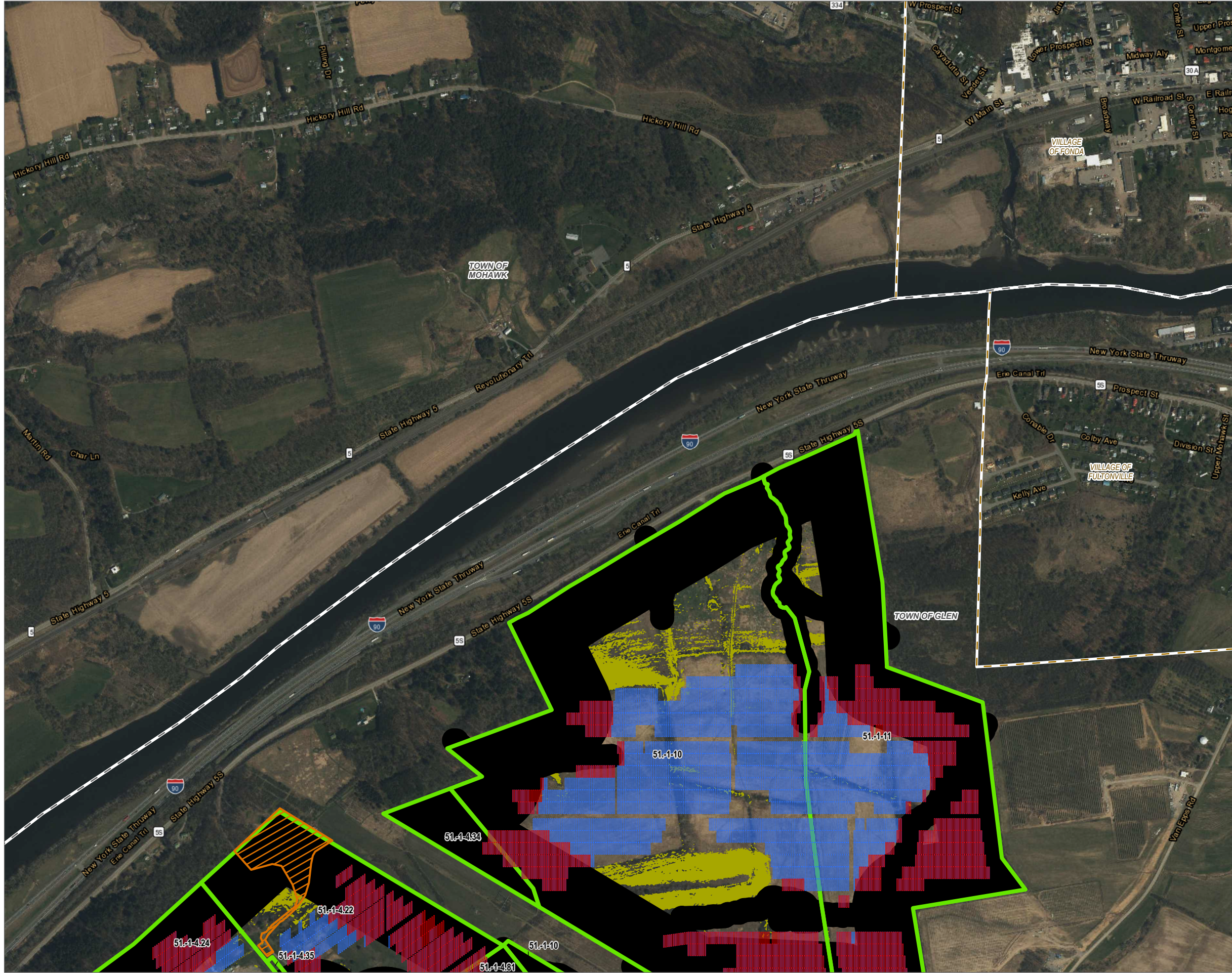
- PANELS TO BE LOST
- PANELS ALLOWED
- PANEL EXCLUSION AREAS
- COLLECTION EASEMENT ONLY
- FACILITY SITE
- LOCAL SETBACKS - 500FT FROM PROPERTY LINE & 100FT FROM WETLANDS & STREAMS
- SLOPE 15%+
- TOWN BOUNDARY
- VILLAGE BOUNDARY

BASE MAP: ESRI WORLD IMAGERY SERVICE (3/30/2022)
 DATA SOURCES: ESRI, USGS, NYS GIS, NLCD, USDA, TRC.



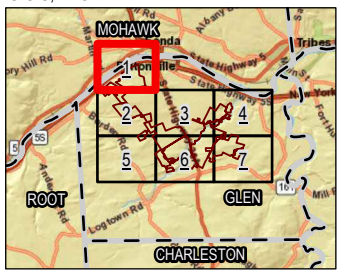
PROJECT:		CONNECTGEN MONTGOMERY COUNTY LLC	
		MILL POINT SOLAR I	
		TOWN OF GLEN, MONTGOMERY COUNTY, NY	
TITLE:			
BUILDABLE AREA REDUCTION			
DRAWN BY:	A. KAILAS	PROJ. NO.:	411360
CHECKED BY:	C. PEARCE		
APPROVED BY:	T. KONDAK	FIGURE 5 OVERVIEW	
DATE:	JANUARY 2024		
		3 CORPORATE DRIVE SUITE 202 CLIFTON PARK, NY 12065 PHONE: 518.348.1190	
FILE:	MILL_POINT_94C_EX24.APRX		

Coordinate System: NAD 1983 StatePlane New York East FIPS 3101 Feet, Map Rotation: 0
 Saved By: AKAILAS on 1/24/2024, 10:15:06 AM, File Path: \\mpe\gis\gis\gis\proj1-PROJ\PROJECTS\Comment\GEM\411860-Mill_Point_Solar2-APRX\Mill_Point_94C_Ext24.aprx, Layout Name: MPT_Appendix24-Figure_5_Local_Constraints_T1X17L



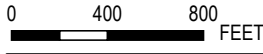
- PANELS TO BE LOST
- PANELS ALLOWED
- PANEL EXCLUSION AREAS
- COLLECTION EASEMENT ONLY
- FACILITY SITE
- LOCAL SETBACKS - 500FT FROM PROPERTY LINE & 100FT FROM WETLANDS & STREAMS
- SLOPE 15%+
- TOWN BOUNDARY
- VILLAGE BOUNDARY

BASE MAP: ESRI WORLD IMAGERY SERVICE (3/30/2022)
 DATA SOURCES: ESRI, USGS, NYS GIS, TRC



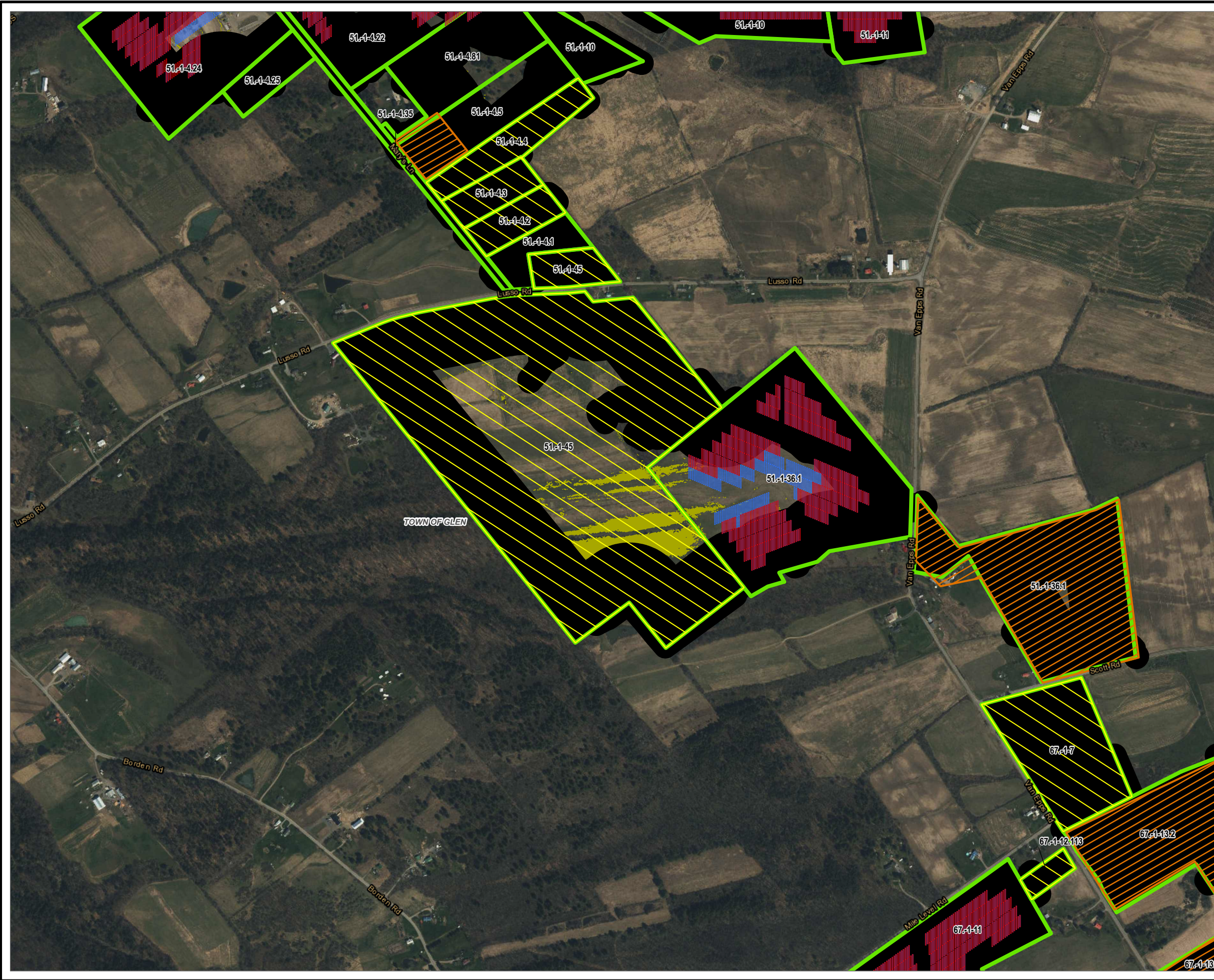
1:9,600

1" = 800 Feet



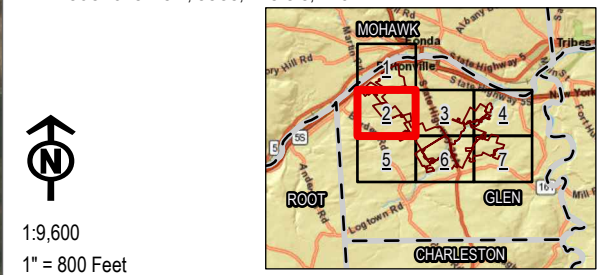
PROJECT:		CONNECTGEN MONTGOMERY COUNTY LLC MILL POINT SOLAR I TOWN OF GLEN, MONTGOMERY COUNTY, NY	
TITLE:		BUILDABLE AREA REDUCTION	
DRAWN BY:	A. KAILAS	PROJ. NO.:	411360
CHECKED BY:	C. PEARCE	FIGURE 5 MAP 1 OF 7	
APPROVED BY:	T. KONDAK		
DATE:	JANUARY 2024		
TRC		3 CORPORATE DRIVE SUITE 202 CLIFTON PARK, NY 12065 PHONE: 518.348.1190	
FILE:	MILL_POINT_94C_EX24.APRX		

Coordinate System: NAD 1983 StatePlane New York East FIPS 3101 Feet, Map Rotation: 0
 -- Saved By: AKAILAS on 1/24/2024, 10:15:06 AM, File Path: \\mpe\employees\gis\arcgispro1\PROJECTS\Comment\GEM41196-Mill_Point_Solar2\APRX\Mill_Point_94C_EX24.aprx, Layout Name: MPT_Appendix24_Figure_5_Local_Constraints_T1xT1L



- PANELS TO BE LOST
- PANELS ALLOWED
- PANEL EXCLUSION AREAS
- COLLECTION EASEMENT ONLY
- FACILITY SITE
- LOCAL SETBACKS - 500FT FROM PROPERTY LINE & 100FT FROM WETLANDS & STREAMS
- SLOPE 15%+
- TOWN BOUNDARY
- VILLAGE BOUNDARY

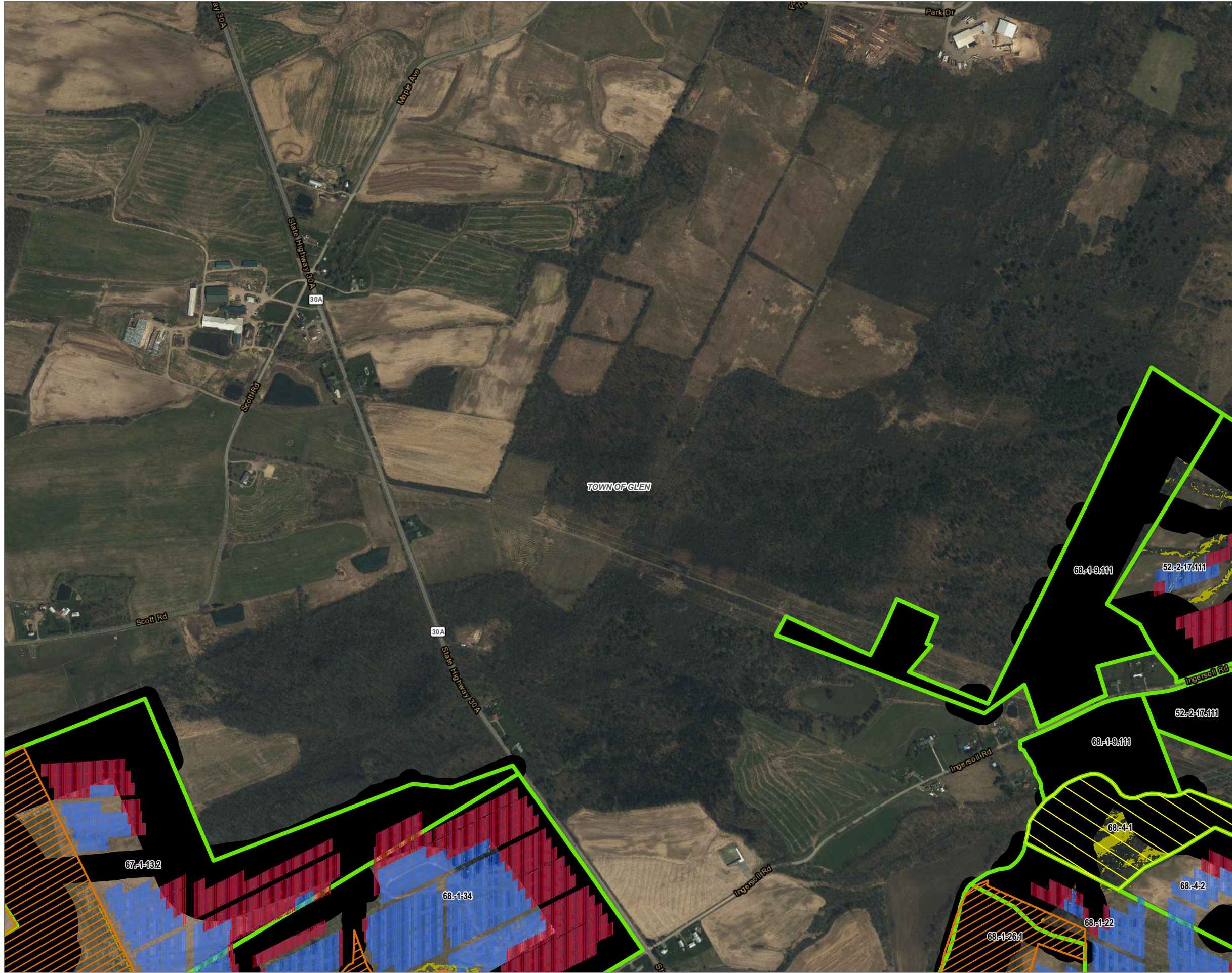
BASE MAP: ESRI WORLD IMAGERY SERVICE (3/30/2022)
 DATA SOURCES: ESRI, USGS, NYS GIS, TRC



1:9,600
 1" = 800 Feet
 0 400 800 FEET

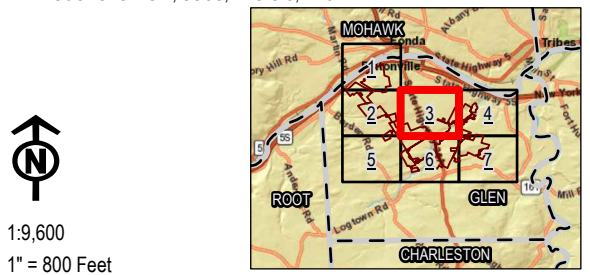
PROJECT:		CONNECTGEN MONTGOMERY COUNTY LLC MILL POINT SOLAR I TOWN OF GLEN, MONTGOMERY COUNTY, NY	
TITLE:		BUILDABLE AREA REDUCTION	
DRAWN BY:	A. KAILAS	PROJ. NO.:	411360
CHECKED BY:	C. PEARCE	FIGURE 5 MAP 2 OF 7	
APPROVED BY:	T. KONDAK		
DATE:	JANUARY 2024		
TRC		3 CORPORATE DRIVE SUITE 202 CLIFTON PARK, NY 12065 PHONE: 518.348.1190	
FILE:	MILL_POINT_94C_EX24.APRX		

Coordinate System: NAD 1983 StatePlane New York East FIPS 3101 Feet; Map Rotation: 0
 - Saved By: AKAILAS on 1/24/2024, 10:15:06 AM; File Path: \\mpe\employees\gis\arcgispro1\PROJECTS\Comment\GEM411960-Mill_Point_Solar2\APRX\Mill_Point_94C_EX24.aprx; Layout Name: MP1_Appendix24_Figure_5_Local_Constraints_T1X17L



- PANELS TO BE LOST
- PANELS ALLOWED
- PANEL EXCLUSION AREAS
- COLLECTION EASEMENT ONLY
- FACILITY SITE
- LOCAL SETBACKS - 500FT FROM PROPERTY LINE & 100FT FROM WETLANDS & STREAMS
- SLOPE 15%+
- TOWN BOUNDARY
- VILLAGE BOUNDARY

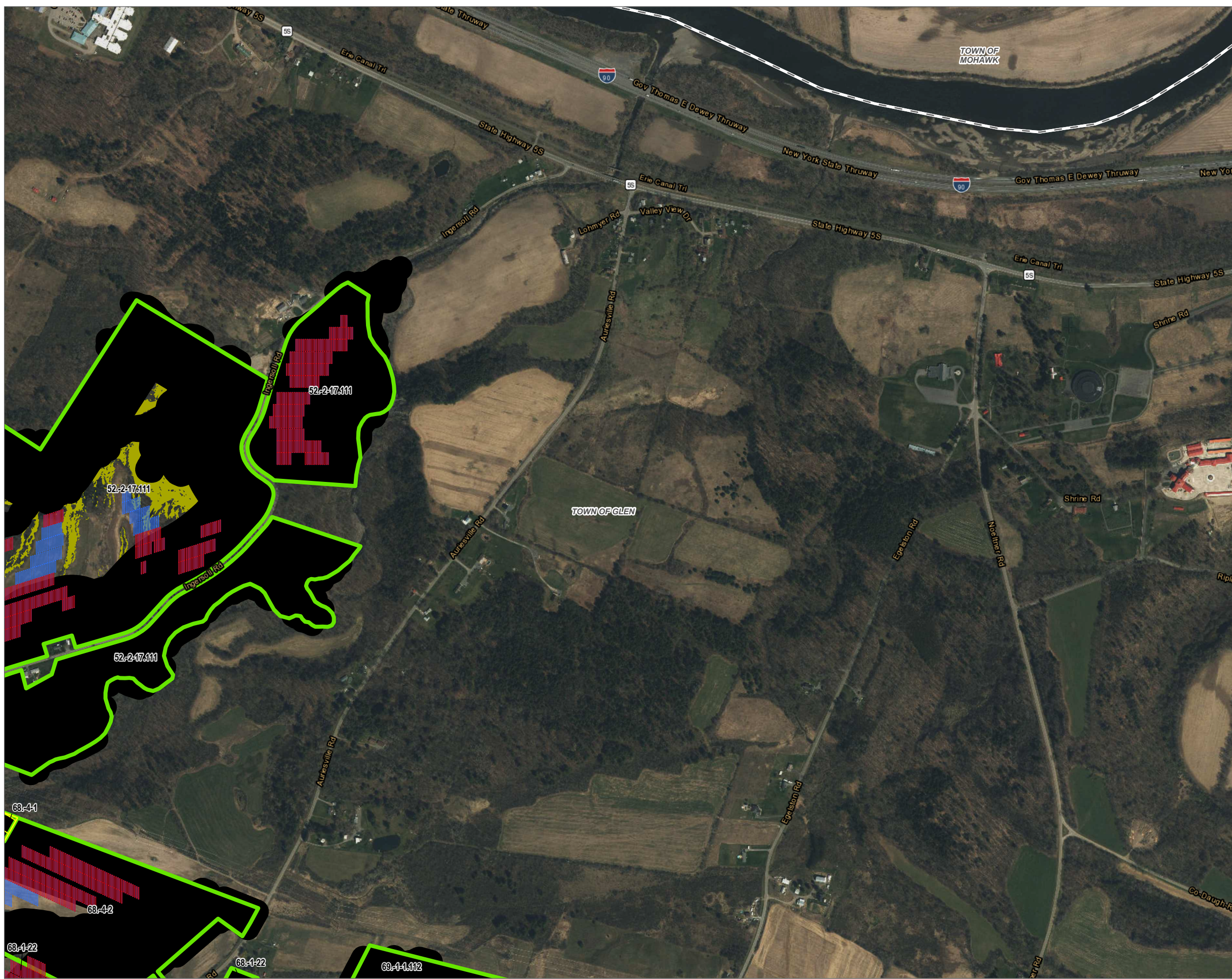
BASE MAP: ESRI WORLD IMAGERY SERVICE (3/30/2022)
 DATA SOURCES: ESRI, USGS, NYS GIS, TRC



1:9,600
 1" = 800 Feet
 0 400 800 FEET

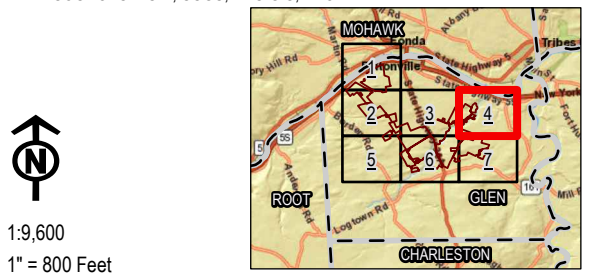
PROJECT:		CONNECTGEN MONTGOMERY COUNTY LLC MILL POINT SOLAR I TOWN OF GLEN, MONTGOMERY COUNTY, NY	
TITLE:		BUILDABLE AREA REDUCTION	
DRAWN BY:	A. KAILAS	PROJ. NO.:	411360
CHECKED BY:	C. PEARCE	FIGURE 5 MAP 3 OF 7	
APPROVED BY:	T. KONDAK		
DATE:	JANUARY 2024		
		3 CORPORATE DRIVE SUITE 202 CLIFTON PARK, NY 12065 PHONE: 518.348.1190	
FILE:	MILL_POINT_94C_EX24.APRX		

Coordinate System: NAD 1983 StatePlane New York East FIPS 3101 Feet; Map Rotation: 0
 -- Saved By: AKAILAS on 1/24/2024, 10:15:06 AM; File Path: \\mpe\employees\gis\arcgispro1\PROJECTS\Comment\GEM411580-Mill_Point_Solar2\APRX\Mill_Point_94C_EX24.aprx; Layout Name: MPT_Appendix24_Figure_5_Local_Constraints_T1X7L



- PANELS TO BE LOST
- PANELS ALLOWED
- PANEL EXCLUSION AREAS
- COLLECTION EASEMENT ONLY
- FACILITY SITE
- LOCAL SETBACKS - 500FT FROM PROPERTY LINE & 100FT FROM WETLANDS & STREAMS
- SLOPE 15%+
- TOWN BOUNDARY
- VILLAGE BOUNDARY

BASE MAP: ESRI WORLD IMAGERY SERVICE (3/30/2022)
 DATA SOURCES: ESRI, USGS, NYS GIS, TRC



1:9,600
 1" = 800 Feet
 0 400 800 FEET

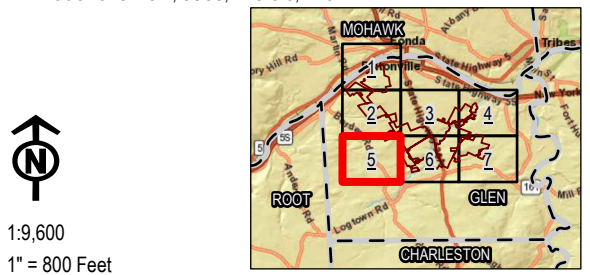
PROJECT:		CONNECTGEN MONTGOMERY COUNTY LLC MILL POINT SOLAR I TOWN OF GLEN, MONTGOMERY COUNTY, NY	
TITLE:		BUILDABLE AREA REDUCTION	
DRAWN BY:	A. KAILAS	PROJ. NO.:	411360
CHECKED BY:	C. PEARCE	FIGURE 5 MAP 4 OF 7	
APPROVED BY:	T. KONDAK		
DATE:	JANUARY 2024		
TRC		3 CORPORATE DRIVE SUITE 202 CLIFTON PARK, NY 12065 PHONE: 518.348.1190	
FILE:	MILL_POINT_94C_EX24.APRX		

Coordinate System: NAD 1983 StatePlane New York East FIPS 3101 Feet; Map Rotation: 0
 - Saved By: AKAILAS on 1/24/2024, 10:15:06 AM; File Path: \\mpeoyes\gis\arcgispro1-PRO\PROJECTS\Comment\GEM41196-Mill_Point_Solar2-APRX\Mill_Point_94C_EX24.aprx; Layout Name: MPT_Appendix24-Figure_5_Local_Constraints_T1X7L



- PANELS TO BE LOST
- PANELS ALLOWED
- PANEL EXCLUSION AREAS
- COLLECTION EASEMENT ONLY
- FACILITY SITE
- LOCAL SETBACKS - 500FT FROM PROPERTY LINE & 100FT FROM WETLANDS & STREAMS
- SLOPE 15%+
- TOWN BOUNDARY
- VILLAGE BOUNDARY

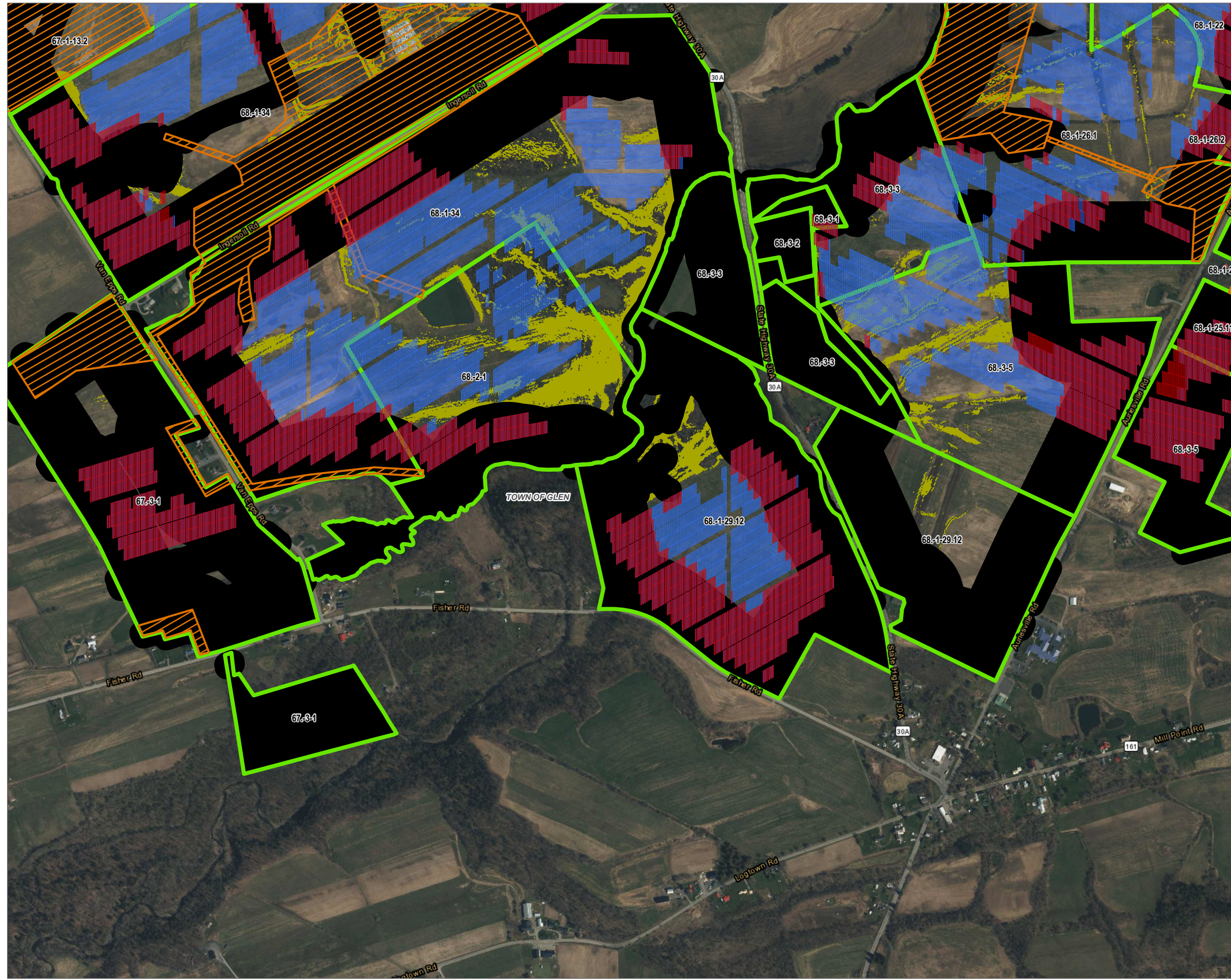
BASE MAP: ESRI WORLD IMAGERY SERVICE (3/30/2022)
 DATA SOURCES: ESRI, USGS, NYS GIS, TRC



1:9,600
 1" = 800 Feet
 0 400 800 FEET

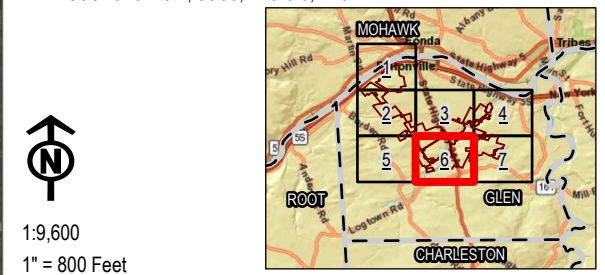
PROJECT:		CONNECTGEN MONTGOMERY COUNTY LLC MILL POINT SOLAR I TOWN OF GLEN, MONTGOMERY COUNTY, NY	
TITLE:		BUILDABLE AREA REDUCTION	
DRAWN BY:	A. KAILAS	PROJ. NO.:	411360
CHECKED BY:	C. PEARCE	FIGURE 5 MAP 5 OF 7	
APPROVED BY:	T. KONDAK		
DATE:	JANUARY 2024		
TRC		3 CORPORATE DRIVE SUITE 202 CLIFTON PARK, NY 12065 PHONE: 518.348.1190	
FILE:	MILL_POINT_94C_EX24.APRX		

Coordinate System: NAD 1983 StatePlane New York East FIPS 3101 Feet; Map Rotation: 0
 - Saved By: AKAILAS on 1/24/2024, 10:15:06 AM; File Path: \\mpley\gis\gis\proj\1-PROJECTS\ConnectGen\411360-Mill_Point_Solar2\APRX\Mill_Point_94C_EX24.aprx; Layout Name: MPT_Appendix24_Figure_5_Local_Constraints_T1X1TL



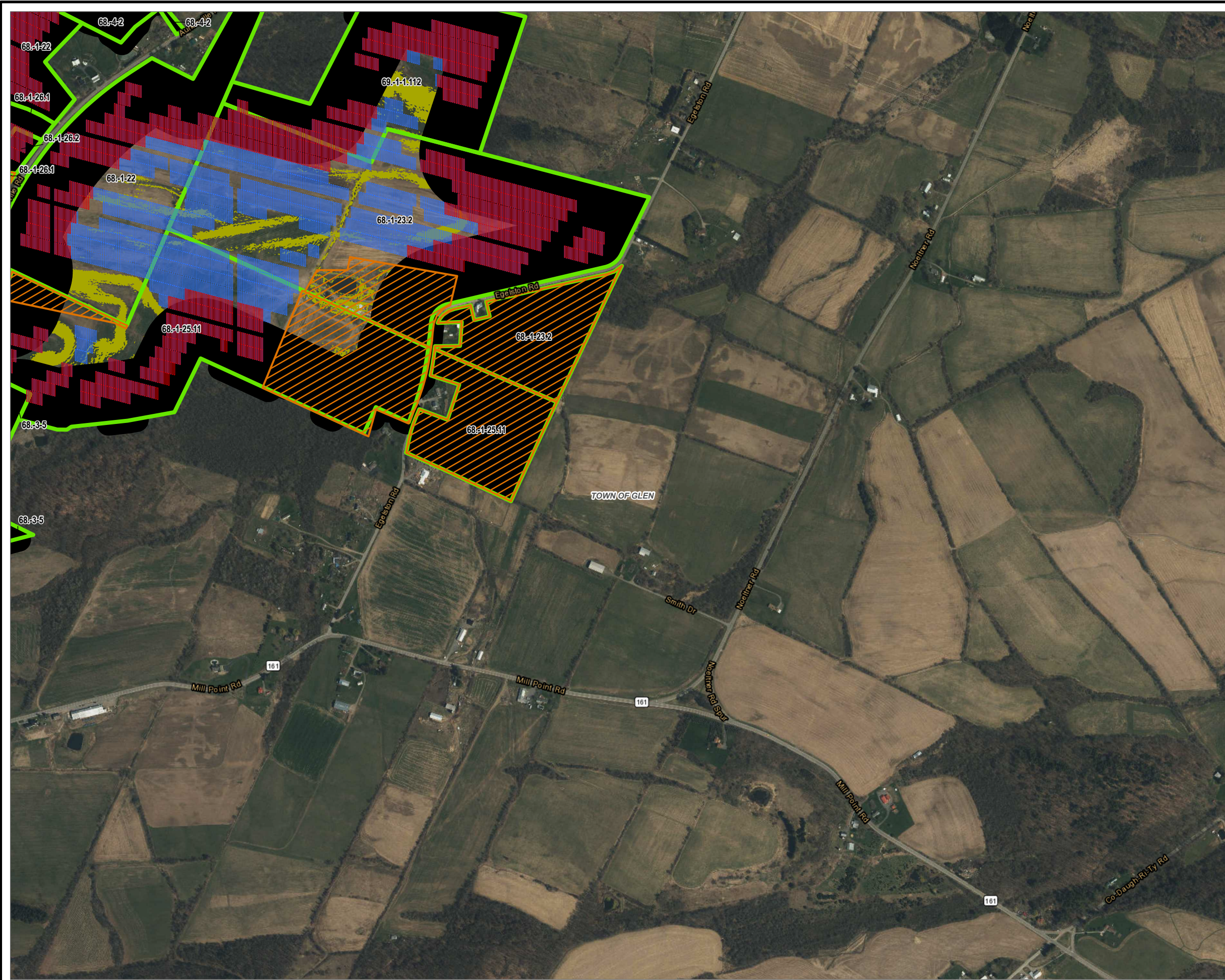
- PANELS TO BE LOST
- PANELS ALLOWED
- PANEL EXCLUSION AREAS
- COLLECTION EASEMENT ONLY
- FACILITY SITE
- LOCAL SETBACKS - 500FT FROM PROPERTY LINE & 100FT FROM WETLANDS & STREAMS
- SLOPE 15%+
- TOWN BOUNDARY
- VILLAGE BOUNDARY

BASE MAP: ESRI WORLD IMAGERY SERVICE (3/30/2022)
 DATA SOURCES: ESRI, USGS, NYS GIS, TRC



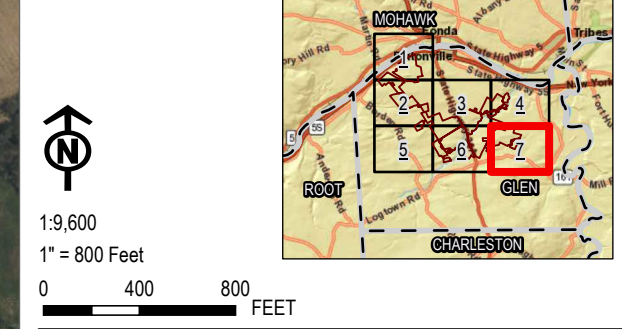
PROJECT:		CONNECTGEN MONTGOMERY COUNTY LLC MILL POINT SOLAR I TOWN OF GLEN, MONTGOMERY COUNTY, NY	
TITLE:		BUILDABLE AREA REDUCTION	
DRAWN BY:	A. KAILAS	PROJ. NO.:	411360
CHECKED BY:	C. PEARCE	FIGURE 5 MAP 6 OF 7	
APPROVED BY:	T. KONDAK		
DATE:	JANUARY 2024		
TRC		3 CORPORATE DRIVE SUITE 202 CLIFTON PARK, NY 12065 PHONE: 518.348.1190	
FILE:	MILL_POINT_94C_EX24.APRX		

Coordinate System: NAD 1983 StatePlane New York East FIPS 3101 Feet; Map Rotation: 0
 -- Saved By: AKAILAS on 1/24/2024, 10:15:06 AM; File Path: \\mpe\employees\gis\arcgispro1\PROJECTS\Comment\GEM411580-Mill_Point_Solar2\APRX\Mill_Point_94C_EX24.aprx; Layout Name: MPT_Appendix24_Figure_5_Local_Constraints_T1X1TL



- PANELS TO BE LOST
- PANELS ALLOWED
- PANEL EXCLUSION AREAS
- COLLECTION EASEMENT ONLY
- FACILITY SITE
- LOCAL SETBACKS - 500FT FROM PROPERTY LINE & 100FT FROM WETLANDS & STREAMS
- SLOPE 15%+
- TOWN BOUNDARY
- VILLAGE BOUNDARY

BASE MAP: ESRI WORLD IMAGERY SERVICE (3/30/2022)
 DATA SOURCES: ESRI, USGS, NYS GIS, TRC



PROJECT:		CONNECTGEN MONTGOMERY COUNTY LLC MILL POINT SOLAR I TOWN OF GLEN, MONTGOMERY COUNTY, NY	
TITLE:		BUILDABLE AREA REDUCTION	
DRAWN BY:	A. KAILAS	PROJ. NO.:	411360
CHECKED BY:	C. PEARCE	FIGURE 5 MAP 7 OF 7	
APPROVED BY:	T. KONDAK		
DATE:	JANUARY 2024		
		3 CORPORATE DRIVE SUITE 202 CLIFTON PARK, NY 12065 PHONE: 518.348.1190	
FILE:	MILL_POINT_94C_EX24.APRX		