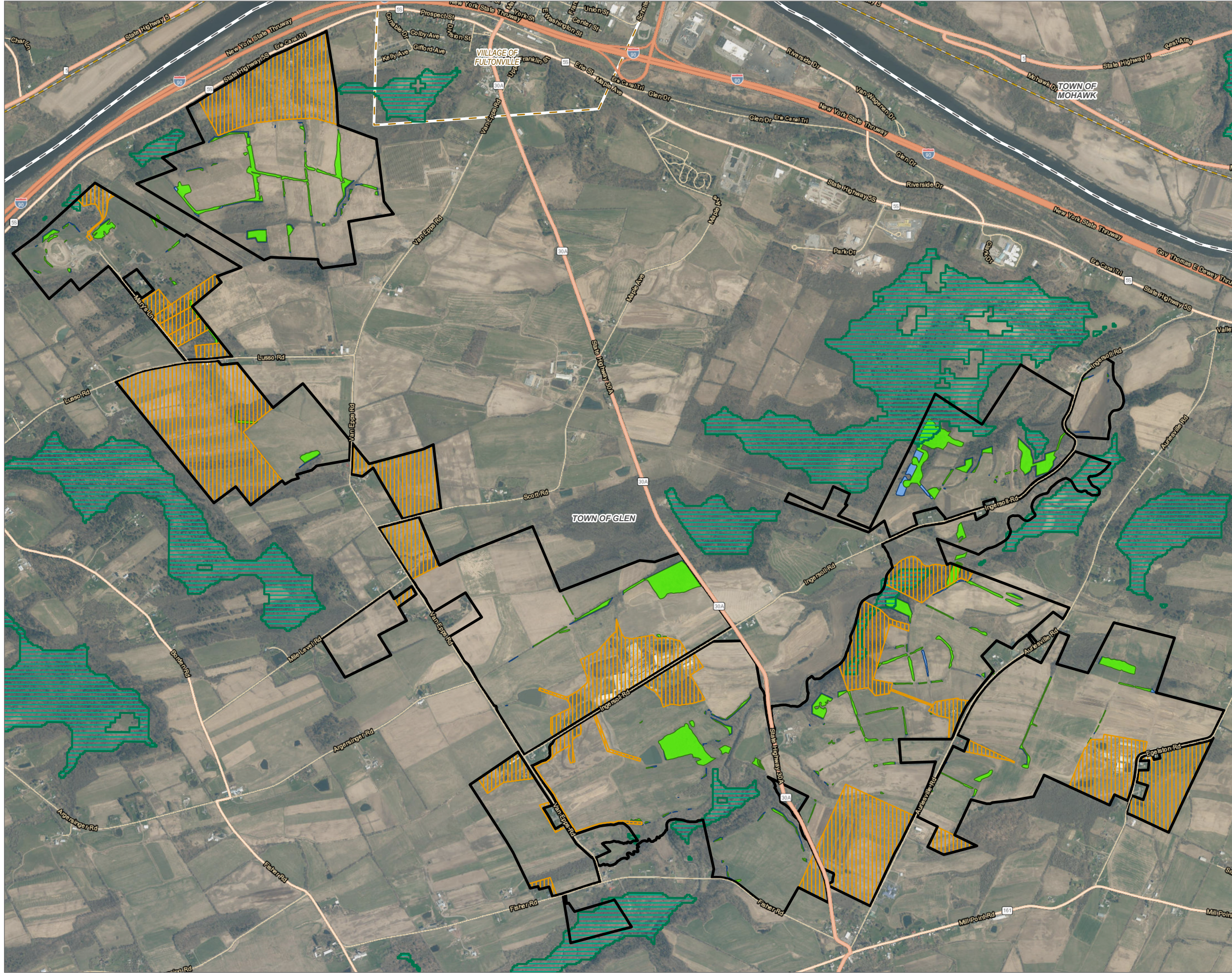


Figure 4. Tree Clearing

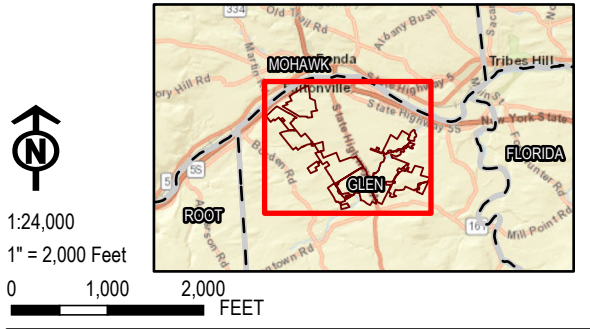
Coordinate System: NAD 1983 StatePlane New York East FIPS 3101 Feet, Map Rotation: 0
-- Saved By: TLATHAM on 12/9/2024, 1:43:57 PM, File Path: T:\PROJECTS\ConnectGEM411360-Mill Point Solar2-APR24\Mill Point 94C EX24.aprx, Layout Name: MP1_Appendix24_Figure 4_Tree Clearing-11x17L



- CLEARING AND GRUBBING
- CLEARING CUT ONLY
- APPROXIMATE CORE FOREST BLOCKS
- PANEL EXCLUSION AREAS
- FACILITY SITE
- TOWN BOUNDARY
- VILLAGE BOUNDARY

NOTE: PANEL EXCLUSION AREAS (PEAS) REPRESENT AREAS WITHIN THE FACILITY SITE WHERE THE APPLICANT LACKS NECESSARY REAL PROPERTY RIGHTS TO INSTALL PHOTOVOLTAIC (PV) PANELS.

BASE MAP: ESRI WORLD IMAGERY SERVICE (3/30/2022)
DATA SOURCES: ESRI, USGS, NYS GIS, NLCD, USDA, TRC.



PROJECT:		CONNECTGEN MONTGOMERY COUNTY LLC MILL POINT SOLAR I TOWN OF GLEN, MONTGOMERY COUNTY, NY	
TITLE:		TREE CLEARING	
DRAWN BY:	A. KAILAS	PROJ. NO.:	411360
CHECKED BY:	C. PEARCE	REVISED FIGURE 4	
APPROVED BY:	T. KONDAK		
DATE:	DECEMBER 2024		
FILE:		MILL_POINT_94C_EX24APRX	



3 CORPORATE DRIVE
SUITE 202
CLIFTON PARK, NY 12065
PHONE: 518.348.1190

Figure 5. Buildable Area Reduction

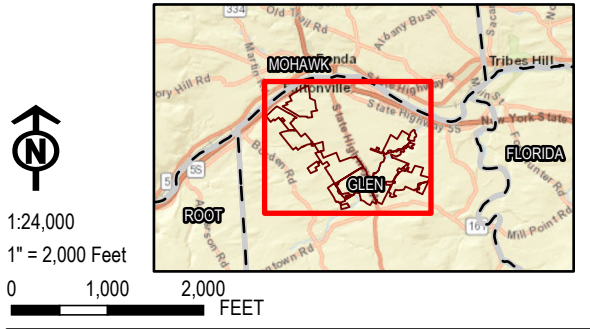
Coordinate System: NAD 1983 StatePlane New York East FIPS 3101 Feet, Map Rotation: 0
-- Saved By: TLATHAM on 12/10/2024, 16:38:08 PM, File Path: T:\PROJECTS\CONNECTGEN\411360-Mill Point Solar\411360-APRX\Mill Point 94C EX24.aprx, Layout Name: MPL_Appendix24, Figure 5 Overview, 11x17L



- PANELS TO BE LOST
- PANELS ALLOWED
- FACILITY SITE
- PANEL EXCLUSION AREAS
- TOWN SETBACKS - 500FT FROM PROPERTY LINE & 100FT FROM SELECT WETLANDS AND STREAMS
- SLOPE 15%+
- FORESTED LANDCOVER
- FORESTED WETLANDS
- TOWN BOUNDARY
- VILLAGE BOUNDARY

NOTE:
PANEL EXCLUSION AREAS (PEAS) REPRESENT AREAS WITHIN THE FACILITY SITE WHERE THE APPLICANT LACKS NECESSARY REAL PROPERTY RIGHTS TO INSTALL PHOTOVOLTAIC (PV) PANELS.

BASE MAP: ESRI WORLD IMAGERY SERVICE (3/30/2022)
DATA SOURCES: ESRI, USGS, NYS GIS, NLCD, USDA, TRC.

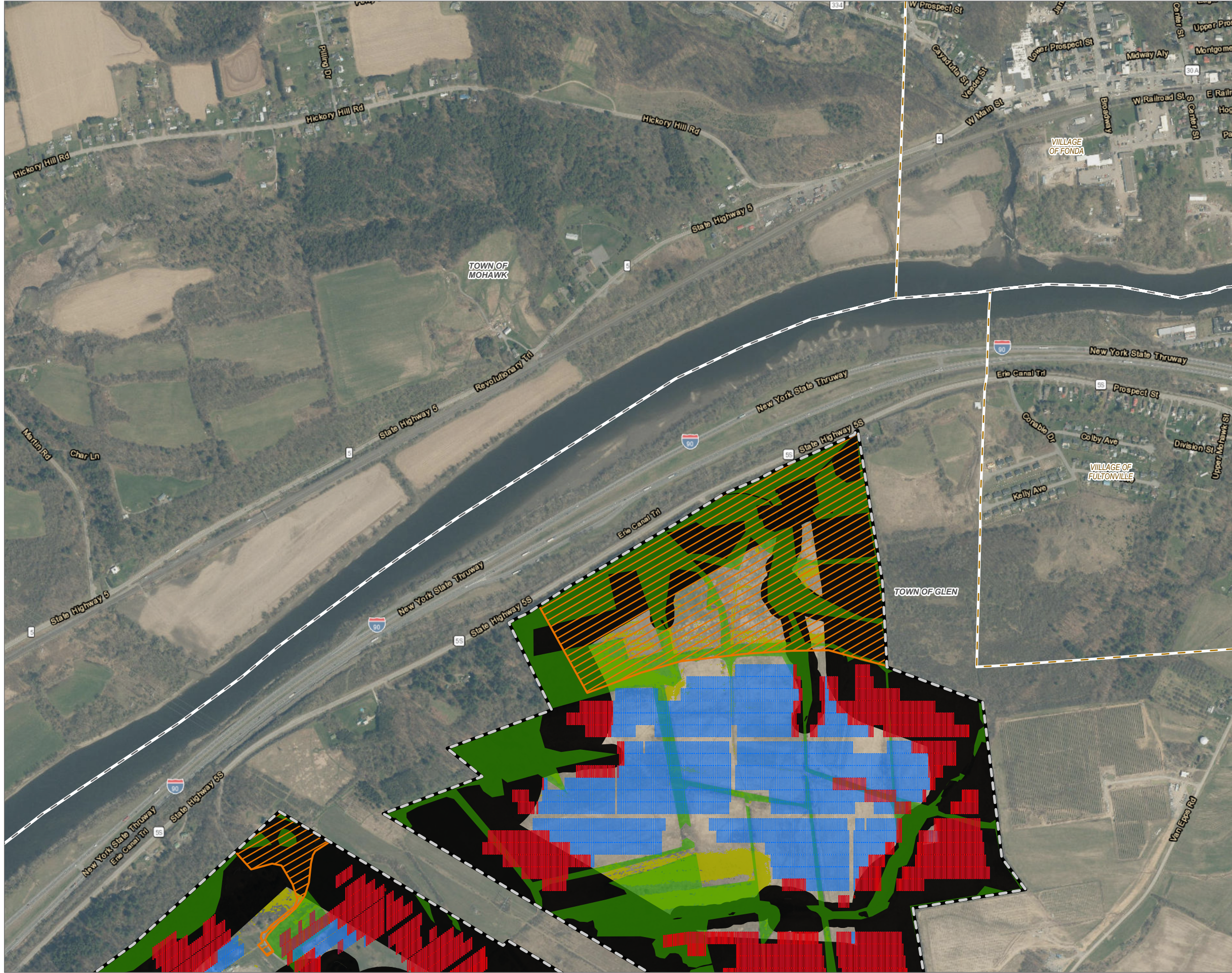


PROJECT:		CONNECTGEN MONTGOMERY COUNTY LLC MILL POINT SOLAR I TOWN OF GLEN, MONTGOMERY COUNTY, NY	
TITLE:		BUILDABLE AREA REDUCTION	
DRAWN BY:	A. KAILAS	PROJ. NO.:	411360
CHECKED BY:	C. PEARCE	REVISED FIGURE 5 OVERVIEW	
APPROVED BY:	T. KONDAK		
DATE:	DECEMBER 2024		
FILE:		MILL_POINT_94C_EX24APRX	



3 CORPORATE DRIVE
SUITE 202
CLIFTON PARK, NY 12065
PHONE: 518.348.1190

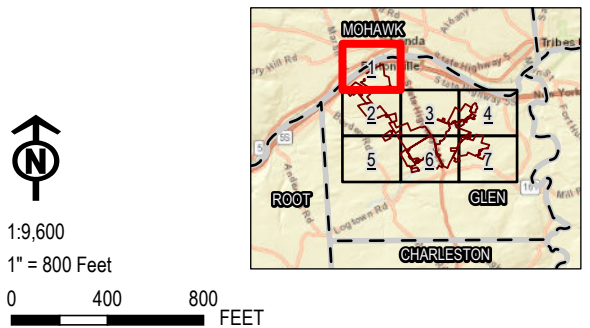
Coordinate System: NAD 1983 StatePlane New York East FIPS 3101 Feet, Map Rotation: 0
-- Saved By: TLATHAM on 12/10/2024, 16:53:13 PM, File Path: T:\PROJECTS\Corrected\GEN411360-Mill_Point_Solar\2-APRX\Mill_Point_94C_EX24.aprx, Layout Name: MPL_Appendix24_Figure_5_Local_Constraints_11x17L



- PANELS TO BE LOST
- PANELS ALLOWED
- PANEL EXCLUSION AREAS
- FACILITY SITE
- TOWN SETBACKS - 500FT FROM PROPERTY LINE & 100FT FROM SELECT WETLANDS AND STREAMS
- SLOPE 15%+
- FORESTED WETLANDS
- FORESTED LANDCOVER
- TOWN BOUNDARY
- VILLAGE BOUNDARY

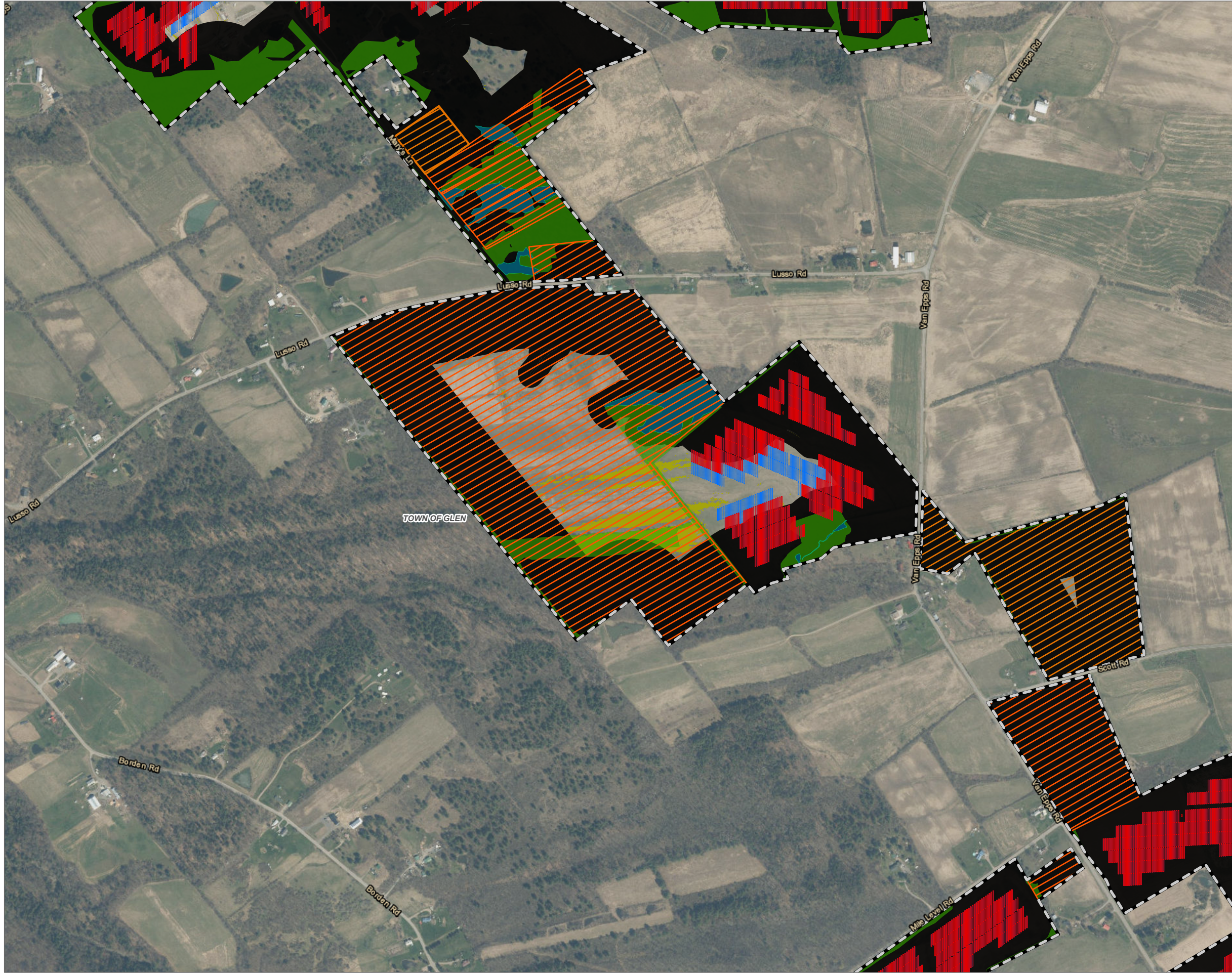
NOTE:
PANEL EXCLUSION AREAS (PEAS) REPRESENT AREAS WITHIN THE FACILITY SITE WHERE THE APPLICANT LACKS NECESSARY REAL PROPERTY RIGHTS TO INSTALL PHOTOVOLTAIC (PV) PANELS.

BASE MAP: ESRI WORLD IMAGERY SERVICE (3/30/2022).
DATA SOURCES: ESRI, USGS, NYS GIS, TRC.



PROJECT:		CONNECTGEN MONTGOMERY COUNTY LLC MILL POINT SOLAR I TOWN OF GLEN, MONTGOMERY COUNTY, NY	
TITLE:		BUILDABLE AREA REDUCTION	
DRAWN BY:	A. KAILAS	PROJ. NO.:	411360
CHECKED BY:	C. PEARCE	REVISED FIGURE 5 MAP 1 OF 7	
APPROVED BY:	T. KONDAK		
DATE:	DECEMBER 2024		
TRC		3 CORPORATE DRIVE SUITE 202 CLIFTON PARK, NY 12065 PHONE: 518.348.1190	
FILE:		MILL_POINT_94C_EX24APRX	

Coordinate System: NAD 1983 StatePlane New York East FIPS 3101 Feet, Map Rotation: 0
-- Saved By: TLATHAM on 12/10/2024, 16:53:13 PM, File Path: T:\1-PROJECTS\Corrected\GEN411360-Mill_Point_Solar\2-APRX\Mill_Point_94C_EX24.aprx, Layout Name: MPL_Appendix24, Figure 5_Local_Constraints_11x17L



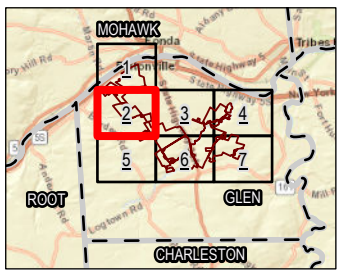
- PANELS TO BE LOST
- PANELS ALLOWED
- PANEL EXCLUSION AREAS
- FACILITY SITE
- TOWN SETBACKS - 500FT FROM PROPERTY LINE & 100FT FROM SELECT WETLANDS AND STREAMS
- SLOPE 15%+
- FORESTED WETLANDS
- FORESTED LANDCOVER
- TOWN BOUNDARY
- VILLAGE BOUNDARY


NOTE:
PANEL EXCLUSION AREAS (PEAS) REPRESENT AREAS WITHIN THE FACILITY SITE WHERE THE APPLICANT LACKS NECESSARY REAL PROPERTY RIGHTS TO INSTALL PHOTOVOLTAIC (PV) PANELS.

BASE MAP: ESRI WORLD IMAGERY SERVICE (3/30/2022).
DATA SOURCES: ESRI, USGS, NYS GIS, TRC.

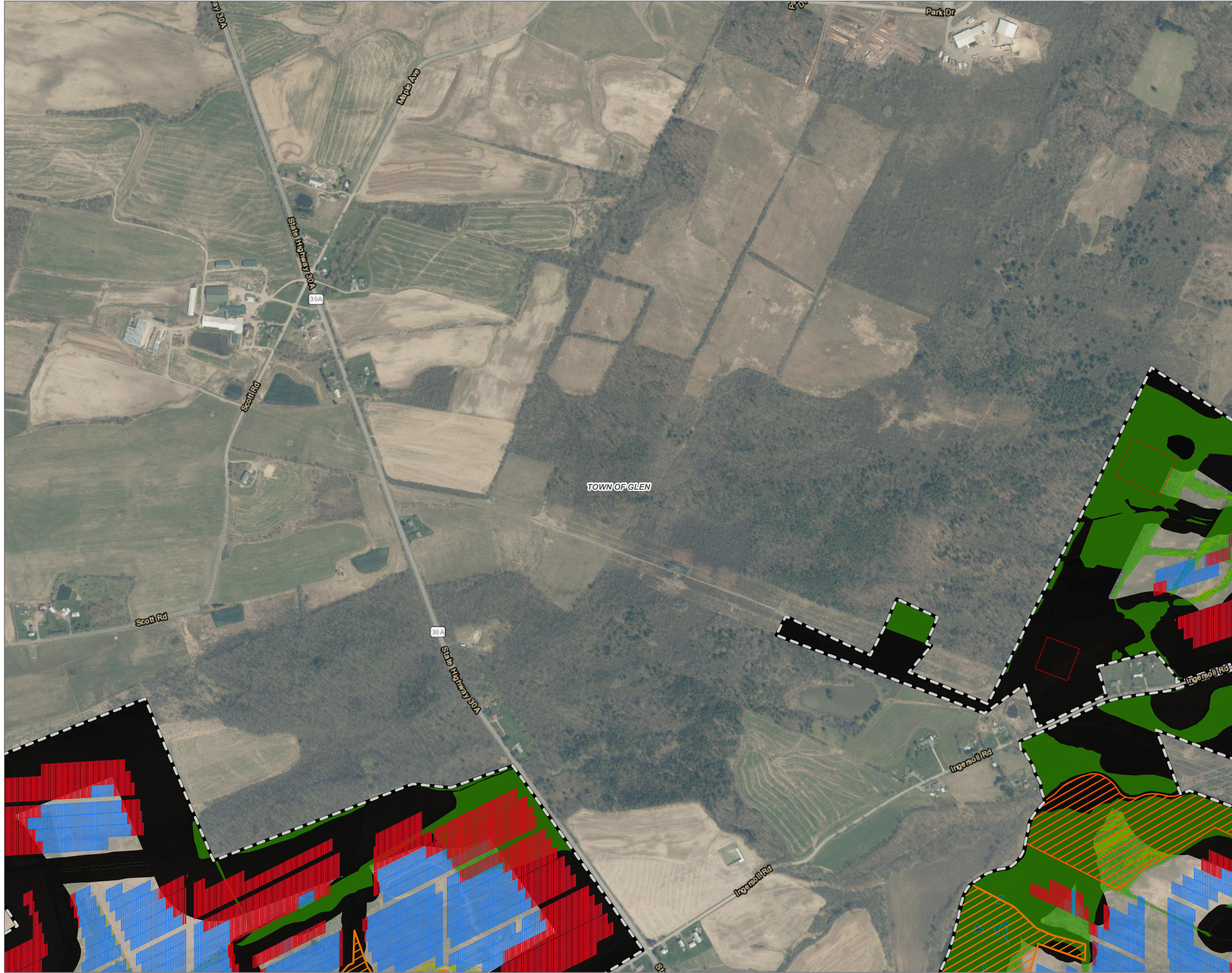


1:9,600
1" = 800 Feet
0 400 800
FEET



PROJECT: CONNECTGEN MONTGOMERY COUNTY LLC MILL POINT SOLAR I TOWN OF GLEN, MONTGOMERY COUNTY, NY	
TITLE: BUILDABLE AREA REDUCTION	
DRAWN BY: A. KAILAS	PROJ. NO.: 411360
CHECKED BY: C. PEARCE	REVISED FIGURE 5 MAP 2 OF 7
APPROVED BY: T. KONDAK	
DATE: DECEMBER 2024	
<div><div>3 CORPORATE DRIVE SUITE 202 CLIFTON PARK, NY 12065 PHONE: 518.348.1190</div></div>	
FILE:	MILL_POINT_94C_EX24.APRX

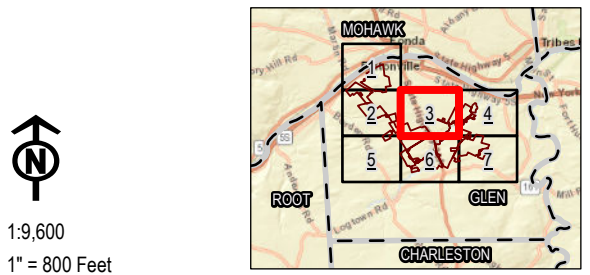
Coordinate System: NAD 1983 StatePlane New York East FIPS 3101 Feet, Map Rotation: 0
-- Saved By: TLATHAM on 12/10/2024, 16:53:13 PM, File Path: T:\PROJECTS\Corrected\GEN411360-Mill_Point_Solar\2-APRX\Mill_Point_94C_EX24.aprx, Layout Name: MPL_Appendix24_Figure_5_Local_Constraints_11x17L




- PANELS TO BE LOST
- PANELS ALLOWED
- PANEL EXCLUSION AREAS
- FACILITY SITE
- TOWN SETBACKS - 500FT FROM PROPERTY LINE & 100FT FROM SELECT WETLANDS AND STREAMS
- SLOPE 15%+
- FORESTED WETLANDS
- FORESTED LANDCOVER
- TOWN BOUNDARY
- VILLAGE BOUNDARY

NOTE:
PANEL EXCLUSION AREAS (PEAS) REPRESENT AREAS WITHIN THE FACILITY SITE WHERE THE APPLICANT LACKS NECESSARY REAL PROPERTY RIGHTS TO INSTALL PHOTOVOLTAIC (PV) PANELS.

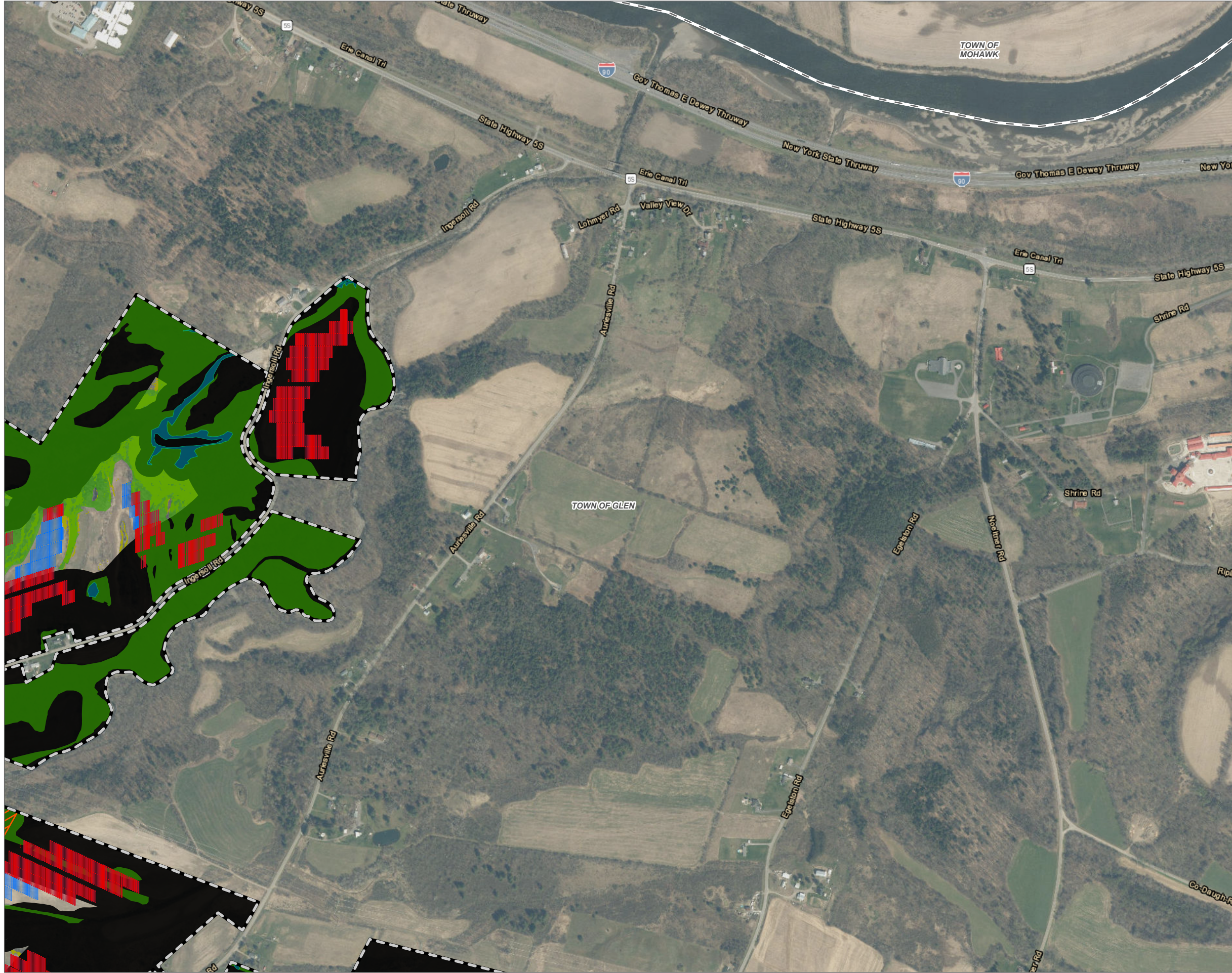
BASE MAP: ESRI WORLD IMAGERY SERVICE (3/30/2022).
DATA SOURCES: ESRI, USGS, NYS GIS, TRC.



1:9,600
1" = 800 Feet
0 400 800 FEET

PROJECT: CONNECTGEN MONTGOMERY COUNTY LLC MILL POINT SOLAR I TOWN OF GLEN, MONTGOMERY COUNTY, NY	
TITLE: BUILDABLE AREA REDUCTION	
DRAWN BY: A. KAILAS	PROJ. NO.: 411360
CHECKED BY: C. PEARCE	REVISED FIGURE 5 MAP 3 OF 7
APPROVED BY: T. KONDAK	
DATE: DECEMBER 2024	
<div> TRC</div> <div>3 CORPORATE DRIVE SUITE 202 CLIFTON PARK, NY 12065 PHONE: 518.348.1190</div>	
FILE:	MILL_POINT_94C_EX24.APRX

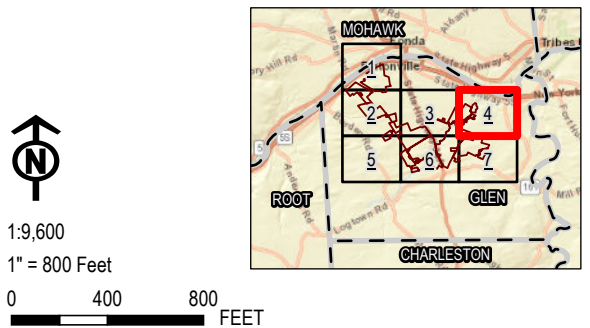
Coordinate System: NAD 1983 StatePlane New York East FIPS 3101 Feet, Map Rotation: 0
-- Saved By: TLATHAM on 12/10/2024, 16:53:13 PM, File Path: T:\PROJECTS\ConnectGEN411360-Mill_Point_Solar\2-APRX\Mill_Point_94C_EX24.aprx, Layout Name: MPL_Appendix24_Figure_5_Local_Constraints_11x17L




- PANELS TO BE LOST
- PANELS ALLOWED
- PANEL EXCLUSION AREAS
- FACILITY SITE
- TOWN SETBACKS - 500FT FROM PROPERTY LINE & 100FT FROM SELECT WETLANDS AND STREAMS
- SLOPE 15%+
- FORESTED WETLANDS
- FORESTED LANDCOVER
- TOWN BOUNDARY
- VILLAGE BOUNDARY

NOTE:
PANEL EXCLUSION AREAS (PEAS) REPRESENT AREAS WITHIN THE FACILITY SITE WHERE THE APPLICANT LACKS NECESSARY REAL PROPERTY RIGHTS TO INSTALL PHOTOVOLTAIC (PV) PANELS.

BASE MAP: ESRI WORLD IMAGERY SERVICE (3/30/2022).
DATA SOURCES: ESRI, USGS, NYS GIS, TRC.



PROJECT: CONNECTGEN MONTGOMERY COUNTY LLC MILL POINT SOLAR I TOWN OF GLEN, MONTGOMERY COUNTY, NY	
TITLE: BUILDABLE AREA REDUCTION	
DRAWN BY: A. KAILAS	PROJ. NO.: 411360
CHECKED BY: C. PEARCE	REVISED FIGURE 5 MAP 4 OF 7
APPROVED BY: T. KONDAK	
DATE: DECEMBER 2024	
<div><div>3 CORPORATE DRIVE SUITE 202 CLIFTON PARK, NY 12065 PHONE: 518.348.1190</div></div>	
FILE:	MILL_POINT_94C_EX24.APRX

Coordinate System: NAD 1983 StatePlane New York East FIPS 3101 Feet, Map Rotation: 0
-- Saved By: TLATHAM on 12/10/2024, 16:53:13 PM, File Path: T:\PROJECTS\ConnectGEN411360-Mill_Point_Solar\2-APRX\Mill_Point_94C_EX24.aprx, Layout Name: MPL_Appendix24_Figure 5_Local_Constraints 11x17L



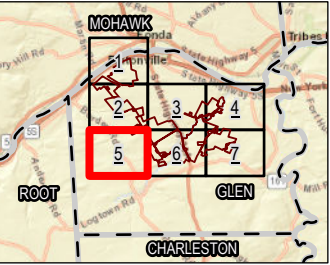
- PANELS TO BE LOST
- PANELS ALLOWED
- PANEL EXCLUSION AREAS
- FACILITY SITE
- TOWN SETBACKS - 500FT FROM PROPERTY LINE
& 100FT FROM SELECT WETLANDS AND
STREAMS
- SLOPE 15%+
- FORESTED WETLANDS
- FORESTED LANDCOVER
- TOWN BOUNDARY
- VILLAGE BOUNDARY


NOTE:
PANEL EXCLUSION AREAS (PEAS) REPRESENT AREAS WITHIN THE
FACILITY SITE WHERE THE APPLICANT LACKS NECESSARY REAL
PROPERTY RIGHTS TO INSTALL PHOTOVOLTAIC (PV) PANELS.

BASE MAP: ESRI WORLD IMAGERY SERVICE (3/30/2022).
DATA SOURCES: ESRI, USGS, NYS GIS, TRC.

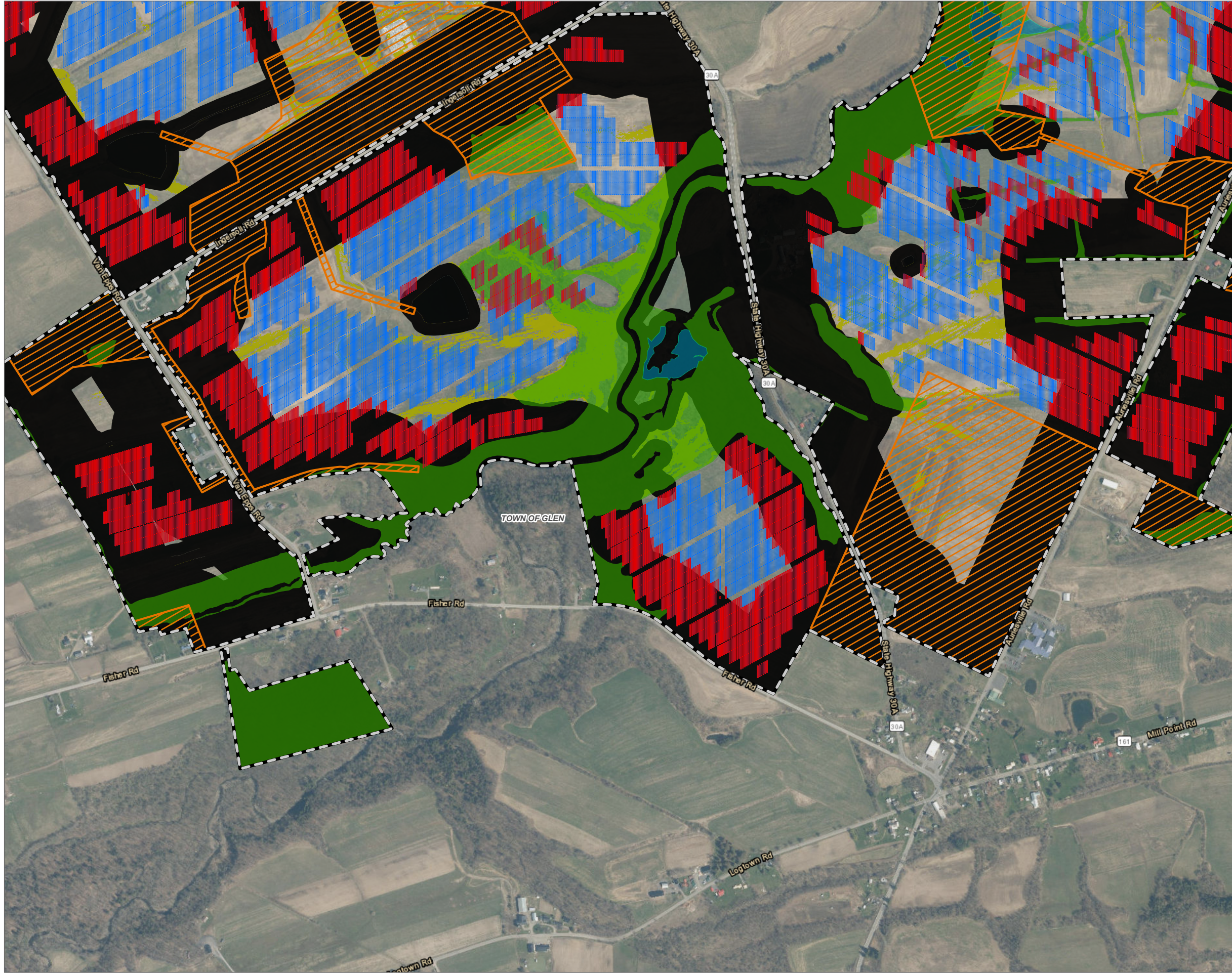


1:9,600
1" = 800 Feet
0 400 800
FEET



PROJECT: CONNECTGEN MONTGOMERY COUNTY LLC MILL POINT SOLAR I TOWN OF GLEN, MONTGOMERY COUNTY, NY	
TITLE: BUILDABLE AREA REDUCTION	
DRAWN BY: A. KAILAS	PROJ. NO.: 411360
CHECKED BY: C. PEARCE	REVISED FIGURE 5 MAP 5 OF 7
APPROVED BY: T. KONDAK	
DATE: DECEMBER 2024	
<div> TRC</div> <div>3 CORPORATE DRIVE SUITE 202 CLIFTON PARK, NY 12065 PHONE: 518.348.1190</div>	
FILE:	MILL_POINT_94C_EX24.APRX

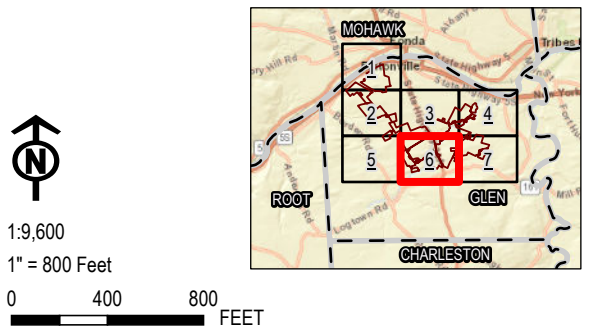
Coordinate System: NAD 1983 StatePlane New York East FIPS 3101 Feet, Map Rotation: 0
-- Saved By: TLATHAM on 12/10/2024, 16:53:13 PM, File Path: T:\PROJECTS\CONNECTGEN\411360-Mill Point Solar\2-APRX\Mill_Point_94C_EX24.aprx, Layout Name: MPL_Appendix24_Figure 5_Local_Constraints_11x17L




- PANELS TO BE LOST
- PANELS ALLOWED
- PANEL EXCLUSION AREAS
- FACILITY SITE
- TOWN SETBACKS - 500FT FROM PROPERTY LINE & 100FT FROM SELECT WETLANDS AND STREAMS
- SLOPE 15%+
- FORESTED WETLANDS
- FORESTED LANDCOVER
- TOWN BOUNDARY
- VILLAGE BOUNDARY

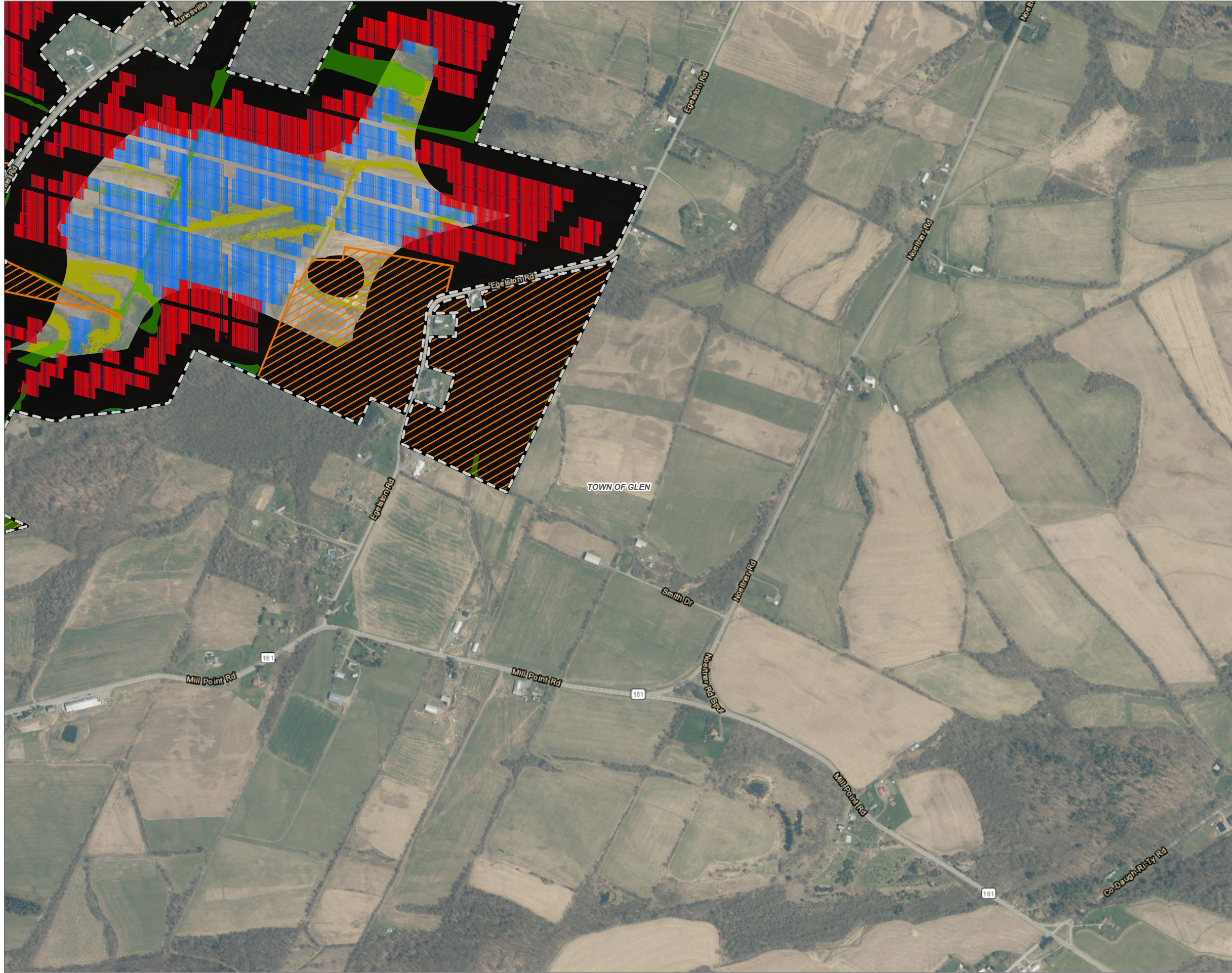
NOTE:
PANEL EXCLUSION AREAS (PEAS) REPRESENT AREAS WITHIN THE FACILITY SITE WHERE THE APPLICANT LACKS NECESSARY REAL PROPERTY RIGHTS TO INSTALL PHOTOVOLTAIC (PV) PANELS.

BASE MAP: ESRI WORLD IMAGERY SERVICE (3/30/2022).
DATA SOURCES: ESRI, USGS, NYS GIS, TRC.



PROJECT: CONNECTGEN MONTGOMERY COUNTY LLC MILL POINT SOLAR I TOWN OF GLEN, MONTGOMERY COUNTY, NY	
TITLE: BUILDABLE AREA REDUCTION	
DRAWN BY: A. KAILAS	PROJ. NO.: 411360
CHECKED BY: C. PEARCE	REVISED FIGURE 5 MAP 6 OF 7
APPROVED BY: T. KONDAK	
DATE: DECEMBER 2024	
<div><div>3 CORPORATE DRIVE SUITE 202 CLIFTON PARK, NY 12065 PHONE: 518.348.1190</div></div>	
FILE:	MILL_POINT_94C_EX24.APRX

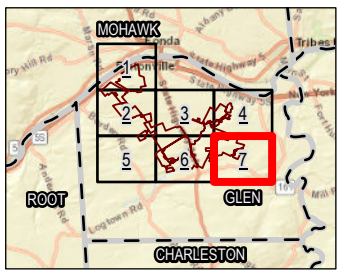
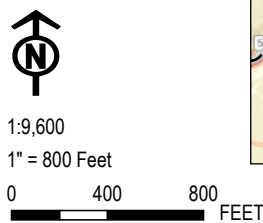
Coordinate System: NAD 1983 StatePlane New York East FIPS 3101 Feet, Map Rotation: 0
-- Saved By: TLATHAM on 12/10/2024, 16:53:13 PM, File Path: T:\PROJECTS\ConnectGlen\411360-Mill_Point_Solar\2-APRX\Mill_Point_94C_EX24.aprx, Layout Name: MPL_Appendix24, Figure 5_Locals_Constraints, 11x17L



- PANELS TO BE LOST
- PANELS ALLOWED
- PANEL EXCLUSION AREAS
- FACILITY SITE
- TOWN SETBACKS - 500FT FROM PROPERTY LINE & 100FT FROM SELECT WETLANDS AND STREAMS
- SLOPE 15%+
- FORESTED WETLANDS
- FORESTED LANDCOVER
- TOWN BOUNDARY
- VILLAGE BOUNDARY

NOTE:
PANEL EXCLUSION AREAS (PEAS) REPRESENT AREAS WITHIN THE FACILITY SITE WHERE THE APPLICANT LACKS NECESSARY REAL PROPERTY RIGHTS TO INSTALL PHOTOVOLTAIC (PV) PANELS.

BASE MAP: ESRI WORLD IMAGERY SERVICE (3/30/2022).
DATA SOURCES: ESRI, USGS, NYS GIS, TRC.




PROJECT: CONNECTGEN MONTGOMERY COUNTY LLC MILL POINT SOLAR I TOWN OF GLEN, MONTGOMERY COUNTY, NY	
TITLE: BUILDABLE AREA REDUCTION	
DRAWN BY: A. KAILAS	PROJ. NO.: 411360
CHECKED BY: C. PEARCE	REVISED FIGURE 5 MAP 7 OF 7
APPROVED BY: T. KONDAK	
DATE: DECEMBER 2024	
<div><div>3 CORPORATE DRIVE SUITE 202 CLIFTON PARK, NY 12065 PHONE: 518.348.1190</div></div>	
FILE:	MILL_POINT_94C_EX24.APRX

Figure 6. All Panel Exclusion Areas

